

KANSAS CORPORATION COMMISSION
OIL & GAS CONSERVATION DIVISION

Form must be Typed
Form must be signed

TEMPORARY ABANDONMENT WELL APPLICATION

All blanks must be complete

OPERATOR: License#
Name:
Address 1:
Address 2:
City: State: Zip:
Contact Person:
Phone:
Contact Person Email:
Field Contact Person:
Field Contact Person Phone:

API No. 15-
Spot Description:
Sec. Twp. S. R.
feet from N / S Line of Section
feet from E / W Line of Section
GPS Location: Lat: , Long:
Datum: NAD27 NAD83 WGS84
County: Elevation: GL KB
Lease Name: Well #:
Well Type: Oil Gas OG WSW Other:
SWD Permit #: ENHR Permit #:
Gas Storage Permit #:
Spud Date: Date Shut-In:

Table with 7 columns: Conductor, Surface, Production, Intermediate, Liner, Tubing. Rows include Size, Setting Depth, Amount of Cement, Top of Cement, Bottom of Cement.

Casing Fluid Level from Surface: How Determined? Date:
Casing Squeeze(s): to w / sacks of cement, to w / sacks of cement. Date:
Do you have a valid Oil & Gas Lease? Yes No
Depth and Type: Junk in Hole at Tools in Hole at Casing Leaks: Yes No Depth of casing leak(s):
Type Completion: ALT. I ALT. II Depth of: DV Tool: w / sacks of cement Port Collar: w / sack of cement
Packer Type: Size: Inch Set at: Feet
Total Depth: Plug Back Depth: Plug Back Method:

Geological Data:

Table with 4 columns: Formation Name, Formation Top, Formation Base, Completion Information. Rows 1 and 2.

UNDER PENALTY OF PERJURY I HEREBY ATTEST THAT THE INFORMATION CONTAINED HEREIN IS TRUE AND CORRECT TO THE BEST OF MY KNOWLEDGE

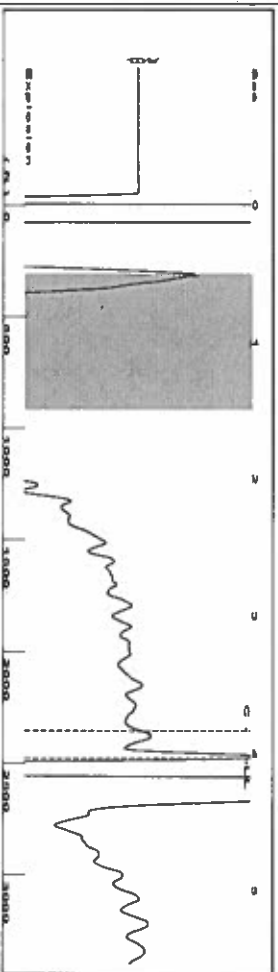
Submitted Electronically

Do NOT Write in This Space - KCC USE ONLY
Date Tested: Results: Date Plugged: Date Repaired: Date Put Back in Service:
Review Completed by: Comments:
TA Approved: Yes Denied Date:

Mail to the Appropriate KCC Conservation Office:

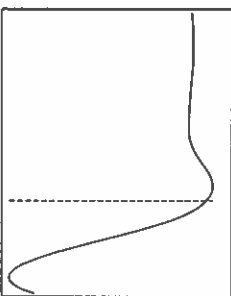
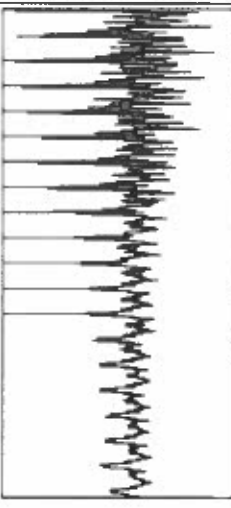
Table with 3 columns: District Office #, Address, Phone. Rows 1-4.

Group: TAD Well: evers a-1 (acquired on: 05/26/20 12:52:13)



Filter Type High Pass Automatic Collar Count Yes
 Manual Acoustic Veloc 1219.23 f/s Manual JTS/sec 19.2308
 Time 4.032 sec
 Joints 78.1483 Jts
 Depth 2477.30 ft

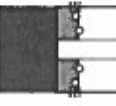
0.5 to 1.5 (Sec)



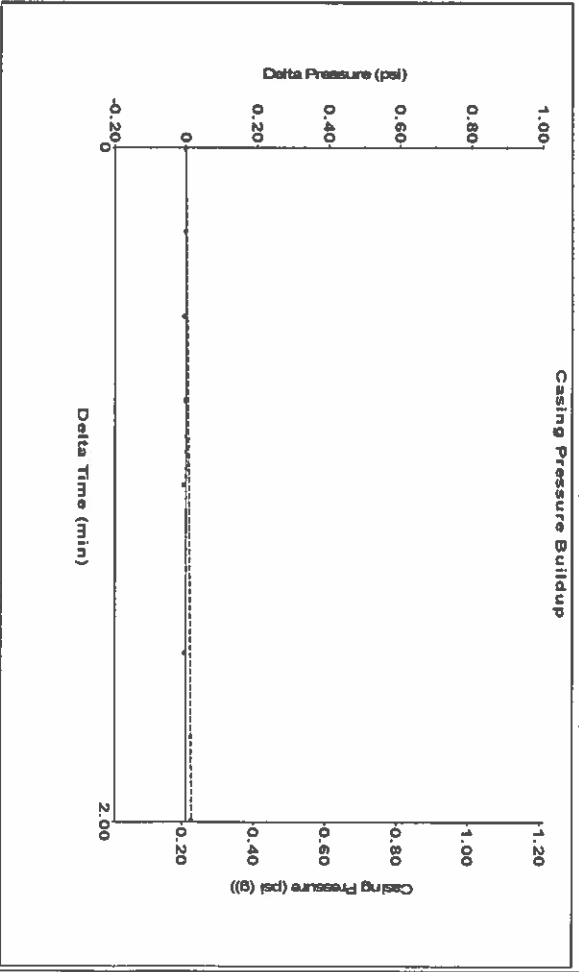
Analysis Method: Automatic

Group: TAD Well: evers a-1 (acquired on: 05/26/20 12:52:13)

Production	Potential	Casing Pressure	Producing
Oil -*- Water -*- Gas -*-	-*- BBL/D -*- BBL/D -*- Mscf/D	0.2 psi (g) Casing Pressure Buildup 0.0 psi	Annular Gas Flow 0 Mscf/D % Liquid 100 %
JPR Method PBHP/SBHP Production Efficiency	Vogel -*- 0.0	Gas/Liquid Interface Pressure 1.2 psi (g)	
Oil 40 deg API Water 1.05 Sp.Gr.H2O Gas 0.78 Sp.Gr.AIR	Liquid Level Depth 2477.30 ft	Pump Intake Depth 2594.00 ft	Pump Intake 40.8 psi (g) Producing BHP 7.5 psi (g) Static BHP -*- psi (g)
Acoustic Velocity	1228.82 f/s	Formation Depth 2496.00 ft	

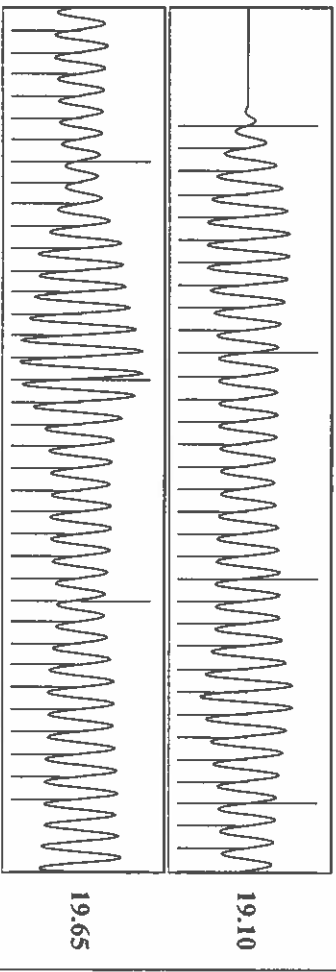


Group: TAD Well: evers a-1 (acquired on: 05/26/20 12:52:13)



Change in Pressure 0.02 psi PT 6902
 Change in Time 2.00 min Range 0 - ? psi

Group: TAD Well: evers a-1 (acquired on: 05/26/20 12:52:13)



Acoustic Velocity 1228.82 f/s Joints counted 69
 Joints Per Second 19.382 Jts/sec Joints to liquid level 78.1483
 Depth to liquid level 2477.3 ft Filter Width 17.2308
 Automatic Collar Count Yes Time to 1st Collar 0.272 21.2308
 3.832

June 02, 2020

Katherine McClurkan
Merit Energy Company, LLC
13727 Noel Road, Suite 1200
DALLAS, TX 75240-7362

Re: Temporary Abandonment
API 15-055-00302-00-00
Evers A 1
SE/4 Sec.35-22S-33W
Finney County, Kansas

Dear Katherine McClurkan:

"Your temporary abandonment (TA) application for the well listed above has been approved. In accordance with K.A.R. 82-3-111 the TA status of this well will expire 06/02/2021.

- * If you return this well to service or plug it, please notify the District Office.
- * If you sell this well you are required to file a Transfer of Operator form, T-1.
- * If the well will remain temporarily abandoned, you must submit a new TA application, CP-111, before 06/02/2021.

You may contact me at the number above if you have questions.

Very truly yours,

Michael Maier"