

KANSAS CORPORATION COMMISSION  
OIL & GAS CONSERVATION DIVISION

TEMPORARY ABANDONMENT WELL APPLICATION

OPERATOR: License# \_\_\_\_\_  
 Name: \_\_\_\_\_  
 Address 1: \_\_\_\_\_  
 Address 2: \_\_\_\_\_  
 City: \_\_\_\_\_ State: \_\_\_\_\_ Zip: \_\_\_\_\_ + \_\_\_\_\_  
 Contact Person: \_\_\_\_\_  
 Phone: ( \_\_\_\_\_ ) \_\_\_\_\_  
 Contact Person Email: \_\_\_\_\_  
 Field Contact Person: \_\_\_\_\_  
 Field Contact Person Phone: ( \_\_\_\_\_ ) \_\_\_\_\_

API No. 15- \_\_\_\_\_  
 Spot Description: \_\_\_\_\_  
 \_\_\_\_\_ - \_\_\_\_\_ - \_\_\_\_\_ - \_\_\_\_\_ Sec. \_\_\_\_\_ Twp. \_\_\_\_\_ S. R. \_\_\_\_\_  E  W  
 \_\_\_\_\_ feet from  N /  S Line of Section  
 \_\_\_\_\_ feet from  E /  W Line of Section  
 GPS Location: Lat: \_\_\_\_\_, Long: \_\_\_\_\_  
(e.g. xx.xxxxx) (e.g. -xxx.xxxxx)  
 Datum:  NAD27  NAD83  WGS84  
 County: \_\_\_\_\_ Elevation: \_\_\_\_\_  GL  KB  
 Lease Name: \_\_\_\_\_ Well #: \_\_\_\_\_  
 Well Type: (check one)  Oil  Gas  OG  WSW  Other: \_\_\_\_\_  
 SWD Permit #: \_\_\_\_\_  ENHR Permit #: \_\_\_\_\_  
 Gas Storage Permit #: \_\_\_\_\_  
 Spud Date: \_\_\_\_\_ Date Shut-In: \_\_\_\_\_

	Conductor	Surface	Production	Intermediate	Liner	Tubing
Size						
Setting Depth						
Amount of Cement						
Top of Cement						
Bottom of Cement						

Casing Fluid Level from Surface: \_\_\_\_\_ How Determined? \_\_\_\_\_ Date: \_\_\_\_\_  
 Casing Squeeze(s): \_\_\_\_\_ to \_\_\_\_\_ w / \_\_\_\_\_ sacks of cement, \_\_\_\_\_ to \_\_\_\_\_ w / \_\_\_\_\_ sacks of cement. Date: \_\_\_\_\_  
(top) (bottom) (top) (bottom)  
 Do you have a valid Oil & Gas Lease?  Yes  No  
 Depth and Type:  Junk in Hole at \_\_\_\_\_  Tools in Hole at \_\_\_\_\_ Casing Leaks:  Yes  No Depth of casing leak(s): \_\_\_\_\_  
(depth) (depth)  
 Type Completion:  ALT. I  ALT. II Depth of:  DV Tool: \_\_\_\_\_ w / \_\_\_\_\_ sacks of cement  Port Collar: \_\_\_\_\_ w / \_\_\_\_\_ sack of cement  
(depth) (depth)  
 Packer Type: \_\_\_\_\_ Size: \_\_\_\_\_ Inch Set at: \_\_\_\_\_ Feet  
 Total Depth: \_\_\_\_\_ Plug Back Depth: \_\_\_\_\_ Plug Back Method: \_\_\_\_\_

**Geological Data:**

Formation Name	Formation Top	Formation Base	Completion Information
1. _____	At: _____	to _____ Feet	Perforation Interval _____ to _____ Feet or Open Hole Interval _____ to _____ Feet
2. _____	At: _____	to _____ Feet	Perforation Interval _____ to _____ Feet or Open Hole Interval _____ to _____ Feet

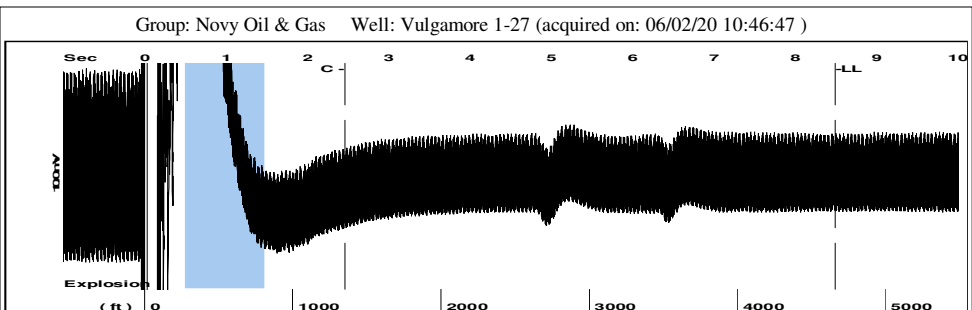
UNDER PENALTY OF PERJURY I HEREBY ATTEST THAT THE INFORMATION CONTAINED HEREIN IS TRUE AND CORRECT TO THE BEST OF MY KNOWLEDGE

Submitted Electronically

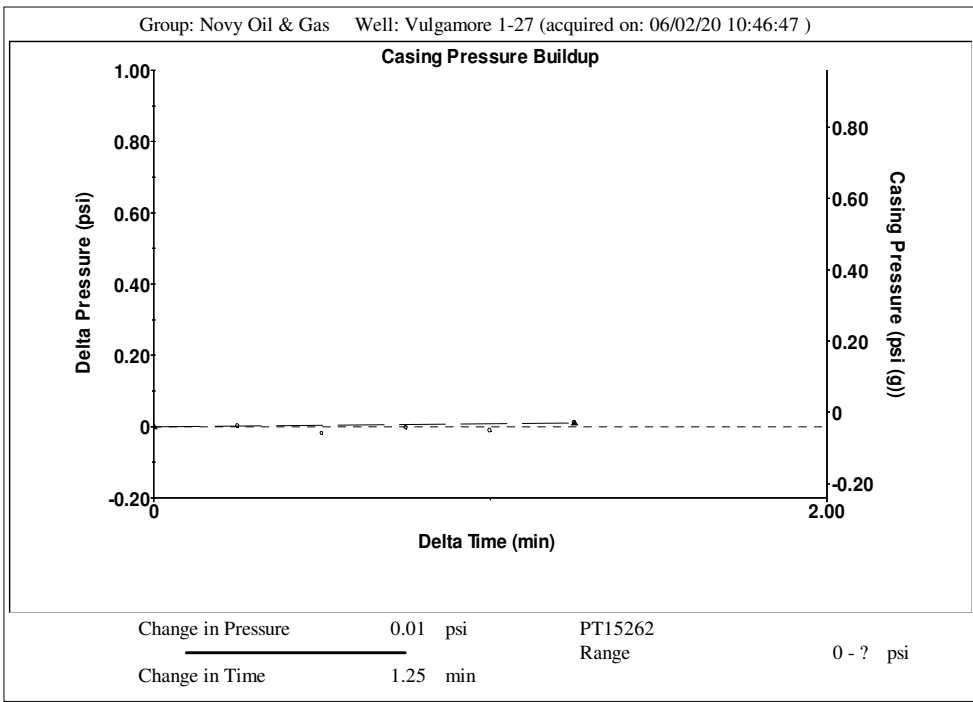
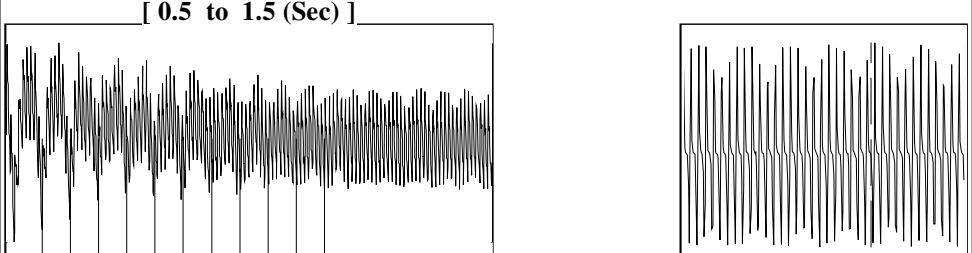
<b>Do NOT Write in This Space - KCC USE ONLY</b>	Date Tested: _____	Results: _____	Date Plugged: _____	Date Repaired: _____	Date Put Back in Service: _____
	Review Completed by: _____ Comments: _____				
TA Approved: <input type="checkbox"/> Yes <input type="checkbox"/> Denied Date: _____					

Mail to the Appropriate KCC Conservation Office:

	KCC District Office #1 - 210 E. Frontview, Suite A, Dodge City, KS 67801	Phone 620.682.7933
	KCC District Office #2 - 3450 N. Rock Road, Building 600, Suite 601, Wichita, KS 67226	Phone 316.337.7400
	KCC District Office #3 - 137 E. 21st St., Chanute, KS 66720	Phone 620.902.6450
	KCC District Office #4 - 2301 E. 13th Street, Hays, KS 67601-2651	Phone 785.261.6250



Filter Type High Pass Automatic Collar Count Yes Time 8.5 sec  
 Manual Acoustic Velocity 1093.1 ft/s Manual JTS/sec 17.2414 Joints 147.086 Jts  
 Depth 4662.61 ft



Group: Novy Oil & Gas Well: Vulgamore 1-27 (acquired on: 06/02/20 10:46:47)

<b>Production</b>	<b>Potential</b>	<b>Casing Pressure</b>		<b>Producing</b>
Current		-0.0 psi (g)		Annular Gas Flow
Oil - *-	0.0 BBL/D	Casing Pressure Buildup		0 Mscf/D
Water - *-	0.0 BBL/D	0.010 psi		% Liquid
Gas - *-	0.0 Mscf/D	1.25 min		100 %
IPR Method	Vogel	Gas/Liquid Interface Pressure		Liquid Stream
PBHP/SBHP	1.00	2.1 psi (g)		Below Tubing
Production Efficiency	0.3	Liquid Level Depth		Oil 0 %
		4662.61 ft		Water 100 %
		Tubing Intake Depth		Liquid Below Tubing
Oil 40 deg.API		3400.00 ft	100 %	
Water 1.05 Sp.Gr.H2O		Formation Depth	Tubing Intake	
Gas 0.91 Sp.Gr.AIR		3600.00 ft	1.5 psi (g)	
Acoustic Velocity	1097.09 ft/s	Formation Submergence	Producing BHP	
		- *- ft	1.6 psi (g)	
		Equivalent Gas Free Liquid HT (TVD)	Static BHP	
		- *- ft	1.7 psi (g)	
Acoustic Test				

Group: Novy Oil & Gas Well: Vulgamore 1-27 (acquired on: 06/02/20 10:46:47)

Acoustic Velocity	1097.09 ft/s	Joints counted	38
Joints Per Second	17.3042 jts/sec	Joints to liquid level	147.086
Depth to liquid level	4662.61 ft	Filter Width	15.2414 19.2414
Automatic Collar Count	Yes	Time to 1st Collar	0.268 2.464

Susan K. Duffy, Chair  
Shari Feist Albrecht, Commissioner  
Dwight D. Keen, Commissioner

Laura Kelly, Governor

June 04, 2020

Michael Novy  
Novy Oil & Gas, Inc.  
PO BOX 559  
GODDARD, KS 67052-0559

Re: Temporary Abandonment  
API 15-171-20442-00-00  
VULGAMORE 1-27  
NW/4 Sec.27-19S-33W  
Scott County, Kansas

Dear Michael Novy:

"Your temporary abandonment (TA) application for the well listed above has been approved. In accordance with K.A.R. 82-3-111 the TA status of this well will expire 06/04/2021.

- \* If you return this well to service or plug it, please notify the District Office.
- \* If you sell this well you are required to file a Transfer of Operator form, T-1.
- \* If the well will remain temporarily abandoned, you must submit a new TA application, CP-111, before 06/04/2021.

You may contact me at the number above if you have questions.

Very truly yours,

Michael Maier"