

KANSAS CORPORATION COMMISSION
OIL & GAS CONSERVATION DIVISION

TEMPORARY ABANDONMENT WELL APPLICATION

OPERATOR: License#
Name:
Address 1:
Address 2:
City: State: Zip:
Contact Person:
Phone:
Contact Person Email:
Field Contact Person:
Field Contact Person Phone:

API No. 15-
Spot Description:
Sec. Twp. S. R.
GPS Location: Lat, Long
Datum: NAD27, NAD83, WGS84
County: Elevation:
Lease Name: Well #:
Well Type: Oil, Gas, OG, WSW, Other
SWD Permit #: ENHR Permit #:
Gas Storage Permit #:
Spud Date: Date Shut-In:

Table with 7 columns: Conductor, Surface, Production, Intermediate, Liner, Tubing. Rows include Size, Setting Depth, Amount of Cement, Top of Cement, Bottom of Cement.

Casing Fluid Level from Surface: How Determined? Date:
Casing Squeeze(s): to w / sacks of cement, to w / sacks of cement. Date:
Do you have a valid Oil & Gas Lease? Yes No
Depth and Type: Junk in Hole at Tools in Hole at Casing Leaks: Yes No Depth of casing leak(s):
Type Completion: ALT. I ALT. II Depth of: DV Tool: w / sacks of cement Port Collar: w / sack of cement
Packer Type: Size: Inch Set at: Feet
Total Depth: Plug Back Depth: Plug Back Method:

Geological Date:

Table with 4 columns: Formation Name, Formation Top, Formation Base, Completion Information. Rows 1 and 2.

UNDER PENALTY OF PERJURY I HEREBY ATTEST THAT THE INFORMATION CONTAINED HEREIN IS TRUE AND CORRECT TO THE BEST OF MY KNOWLEDGE

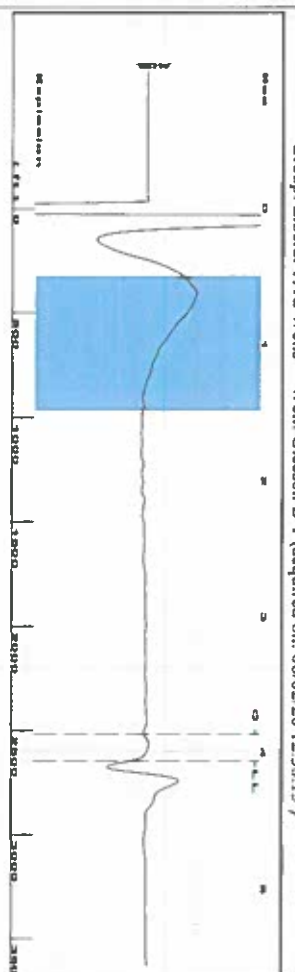
Submitted Electronically

Do NOT Write in This Space - KCC USE ONLY
Date Tested: Results: Date Plugged: Date Repaired: Date Put Back in Service:
Review Completed by: Comments:
TA Approved: Yes Denied Date:

Mail to the Appropriate KCC Conservation Office:

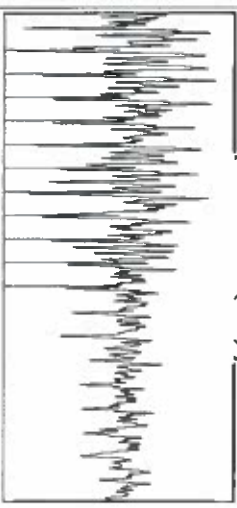
Table with 3 columns: District Office #, Address, Phone. Rows 1-4.

Group: Liberal TAVD Wells Well: Gleeson B-1 (acquired on: 06/02/20 12:38:15)

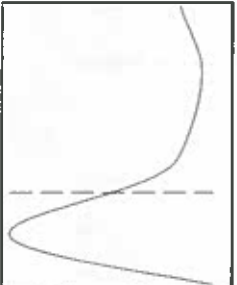


Filter Type High Pass
Manual Acoustic Velo 304.53 ft/s
Automatic Collar Count Yes
Manual JTS/sec 20.5761

0.5 to 1.5 (Sec)



Time 4.065 sec
Joints 83.5583 J/s
Depth 2648.80 ft



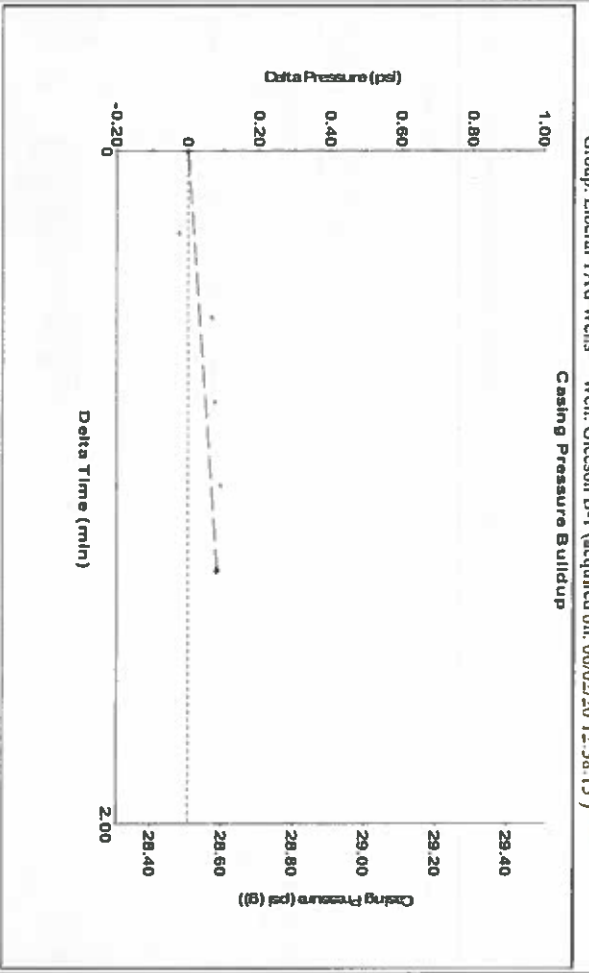
Analysis Method: Automatic

Group: Liberal TAVD Wells Well: Gleeson B-1 (acquired on: 06/02/20 12:38:15)

Production	Potential	Casing Pressure	Static
Current		28.5 psi (g)	
Oil 0	BB/L/D	Casing Pressure Buildup	Oil Column Height
Water 0	BB/L/D	0.082 psi	MD 0 ft
Gas 0.0	Masc/D	1.25 min	Gas/Liquid Interface Pressure
		31.3 psi (g)	
I/P Method	Vogel		
PBHP/SBHP			
Production Efficiency	0.0		
Oil 40 deg API		Liquid Level Depth	Water Column Height
Water 1.05 Sp.Gr./H2O		2648.80 ft	MD 120 ft
Gas 0.70 Sp.Gr./AIR		Pump Intake Depth	
		Formation Depth	
Acoustic Velocity	1303.22 ft/s	2769.00 ft	Static BHP
			85.9 psi (g)

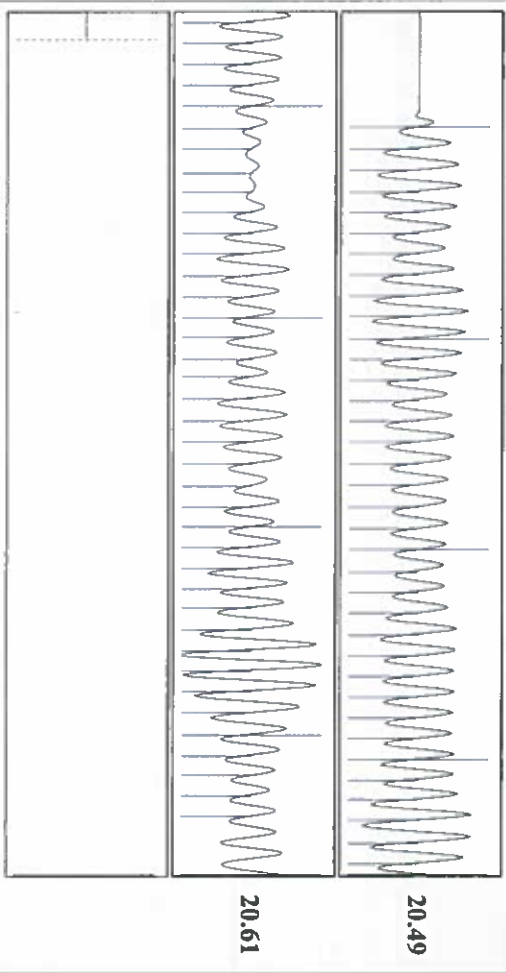


Group: Liberal TAVD Wells Well: Gleeson B-1 (acquired on: 06/02/20 12:38:15)



Change in Pressure 0.08 psi
Change in Time 1.25 min
PTI249 Range 0 - 7 psi

Group: Liberal TAVD Wells Well: Gleeson B-1 (acquired on: 06/02/20 12:38:15)



Acoustic Velocity 1303.22 ft/s
Joints Per Second 20.5556 J/s
Depth to liquid level 2648.8 ft
Automatic Collar Count Yes
Joints counted 74
Joints to liquid level 83.5583
Filter Width 18.5761
Time to 1st Collar 0.264
22.5761
3.864

Shot @ 300 psi, BP

Susan K. Duffy, Chair
Shari Feist Albrecht, Commissioner
Dwight D. Keen, Commissioner

Laura Kelly, Governor

June 04, 2020

Katherine McClurkan
Merit Energy Company, LLC
13727 Noel Road, Suite 1200
Dallas, TX 75240-7362

Re: Temporary Abandonment
API 15-175-00384-00-00
Gleeson B 1
NW/4 Sec.24-34S-34W
Seward County, Kansas

Dear Katherine McClurkan:

"Your temporary abandonment (TA) application for the well listed above has been approved. In accordance with K.A.R. 82-3-111 the TA status of this well will expire 06/04/2021.

- * If you return this well to service or plug it, please notify the District Office.
- * If you sell this well you are required to file a Transfer of Operator form, T-1.
- * If the well will remain temporarily abandoned, you must submit a new TA application, CP-111, before 06/04/2021.

You may contact me at the number above if you have questions.

Very truly yours,

Michael Maier"