

KANSAS CORPORATION COMMISSION
OIL & GAS CONSERVATION DIVISION

Form must be Typed
Form must be signed

TEMPORARY ABANDONMENT WELL APPLICATION

All blanks must be complete

OPERATOR: License#
Name:
Address 1:
Address 2:
City: State: Zip:
Contact Person:
Phone:
Contact Person Email:
Field Contact Person:
Field Contact Person Phone:

API No. 15-
Spot Description:
Sec. Twp. S. R.
GPS Location: Lat: Long:
Datum: NAD27 NAD83 WGS84
County: Elevation:
Lease Name: Well #:
Well Type: Oil Gas OG WSW Other:
SWD Permit #: ENHR Permit #:
Gas Storage Permit #:
Spud Date: Date Shut-In:

Table with 7 columns: Conductor, Surface, Production, Intermediate, Liner, Tubing. Rows include Size, Setting Depth, Amount of Cement, Top of Cement, Bottom of Cement.

Casing Fluid Level from Surface: How Determined? Date:
Casing Squeeze(s): to w / sacks of cement, to w / sacks of cement. Date:
Do you have a valid Oil & Gas Lease? Yes No
Depth and Type: Junk in Hole at Tools in Hole at Casing Leaks: Yes No Depth of casing leak(s):
Type Completion: ALT. I ALT. II Depth of: DV Tool: w / sacks of cement Port Collar: w / sack of cement
Packer Type: Size: Inch Set at: Feet
Total Depth: Plug Back Depth: Plug Back Method:

Geological Data:

Table with 4 columns: Formation Name, Formation Top, Formation Base, Completion Information. Rows 1 and 2.

UNDER PENALTY OF PERJURY I HEREBY ATTEST THAT THE INFORMATION CONTAINED HEREIN IS TRUE AND CORRECT TO THE BEST OF MY KNOWLEDGE

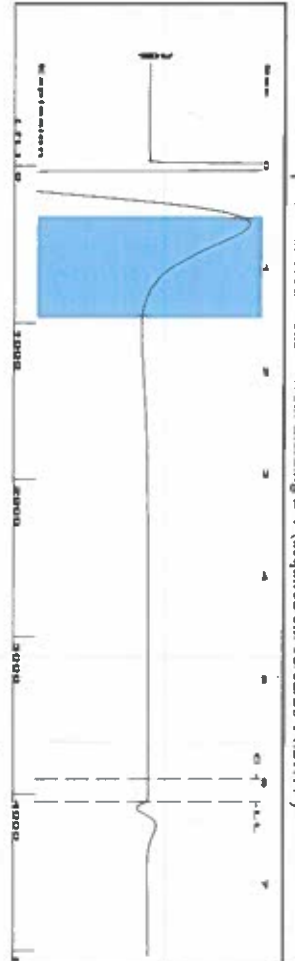
Submitted Electronically

Do NOT Write in This Space - KCC USE ONLY
Date Tested: Results: Date Plugged: Date Repaired: Date Put Back in Service:
Review Completed by: Comments:
TA Approved: Yes Denied Date:

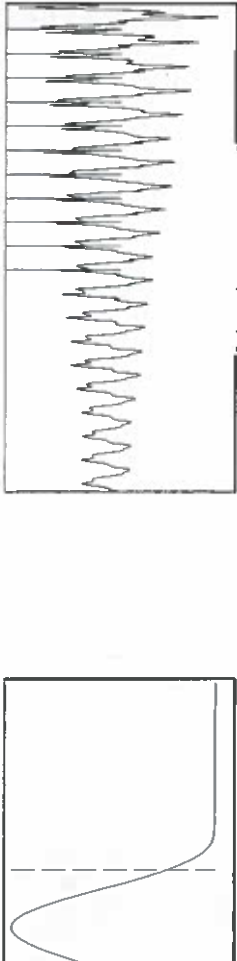
Mail to the Appropriate KCC Conservation Office:

Table with 2 columns: Office Address, Phone. Rows for District Office #1, #2, #3, #4.

Group: Liberal TAVD Wells Well: Elerding B-1 (acquired on: 06/02/20 14:21:17)



Filter Type High Pass Automatic Collar Count Yes
 Manual Acoustic Veloc 1283.4 N/s Manual JTS/sec 20.2429
 Time 6.193 sec
 Joints 127.758 J/s
 Depth 4049.92 ft



Analysis Method: Automatic

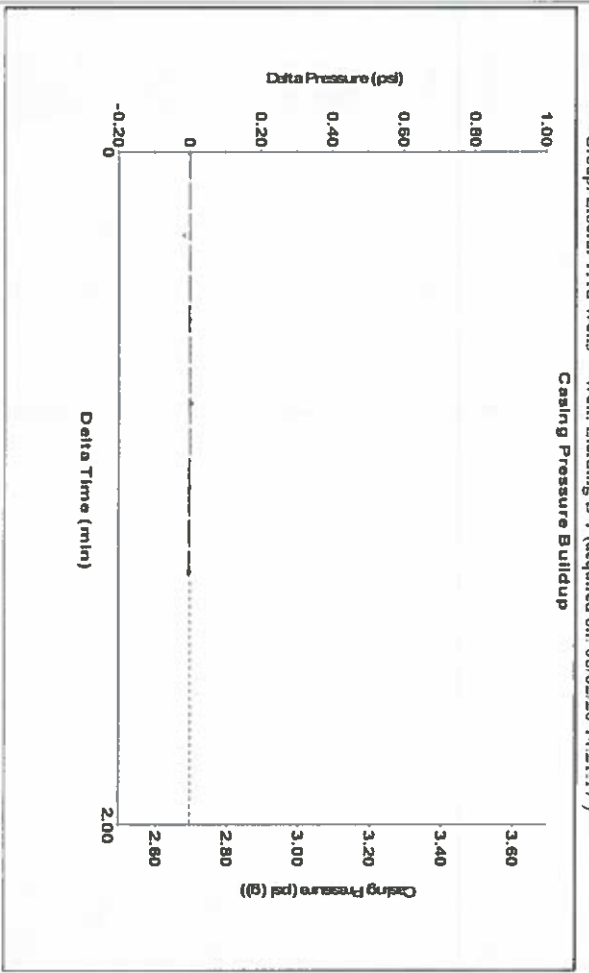
Group: Liberal TAVD Wells Well: Elerding B-1 (acquired on: 06/02/20 14:21:17)

Production Current	Potential	Casing Pressure	Static
Oil -*	BBL/D	2.7 psi (g)	Oil Column Height
Water -*	BBL/D	-0.041 psi	MD 0 ft
Gas -*	Mscf/D	1.25 min	Water Column Height
		Gas/Liquid Interface Pressure	MD 2414 ft
		4.4 psi (g)	
JPR Method	Vogel		
PBHP/SBHP	0.0		
Production Efficiency		Liquid Level Depth	
Oil 37 deg API		4049.92 ft	
Water 1.05 Sp.Gr.120		Pump Intake Depth	
Gas 0.69 Sp.Gr.AIR		6467.00 ft	
Acoustic Velocity	1307.9 N/s	Formation Depth	
		6475.00 ft	
		Static BHP	
		1102.0 psi (g)	



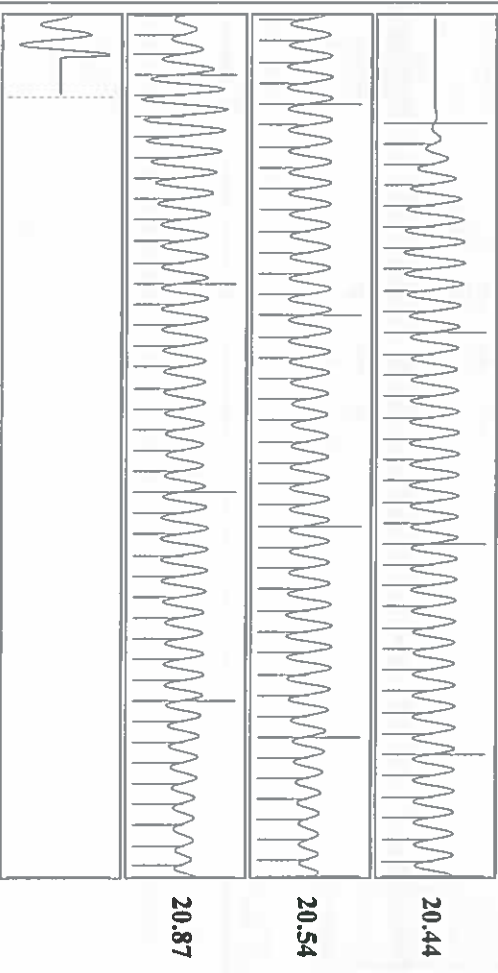
Group: Liberal TAVD Wells Well: Elerding B-1 (acquired on: 06/02/20 14:21:17)

Casing Pressure Buildup



Change in Pressure -0.00 psi PTT1249
 Change in Time 1.25 min Range 0 - ? psi

Group: Liberal TAVD Wells Well: Elerding B-1 (acquired on: 06/02/20 14:21:17)



Acoustic Velocity 1307.9 N/s Joints counted 118
 Joints Per Second 20.6294 J/s/sec Joints to liquid level 127.758
 Depth to liquid level 4049.92 ft Filter Width 18.2429
 Automatic Collar Count Yes Time to 1st Collar 0.252

Shot @ 300 psi BP

June 04, 2020

Katherine McClurkan
Merit Energy Company, LLC
13727 Noel Road, Suite 1200
Dallas, TX 75240

Re: Temporary Abandonment
API 15-189-22395-00-00
Elerding B 1
SW/4 Sec.23-34S-35W
Stevens County, Kansas

Dear Katherine McClurkan:

"Your temporary abandonment (TA) application for the well listed above has been approved. In accordance with K.A.R. 82-3-111 the TA status of this well will expire 06/04/2021.

- * If you return this well to service or plug it, please notify the District Office.
- * If you sell this well you are required to file a Transfer of Operator form, T-1.
- * If the well will remain temporarily abandoned, you must submit a new TA application, CP-111, before 06/04/2021.

You may contact me at the number above if you have questions.

Very truly yours,

Michael Maier"