

KANSAS CORPORATION COMMISSION
OIL & GAS CONSERVATION DIVISION

Form must be Typed
Form must be signed

TEMPORARY ABANDONMENT WELL APPLICATION

All blanks must be complete

OPERATOR: License#
Name:
Address 1:
Address 2:
City: State: Zip:
Contact Person:
Phone:
Contact Person Email:
Field Contact Person:
Field Contact Person Phone:

API No. 15-
Spot Description:
Sec. Twp. S. R.
feet from N / S Line of Section
feet from E / W Line of Section
GPS Location: Lat: , Long:
Datum: NAD27 NAD83 WGS84
County: Elevation: GL KB
Lease Name: Well #:
Well Type: (check one) Oil Gas OG WSW Other:
SWD Permit #: ENHR Permit #:
Gas Storage Permit #:
Spud Date: Date Shut-In:

Table with 7 columns: Conductor, Surface, Production, Intermediate, Liner, Tubing. Rows include Size, Setting Depth, Amount of Cement, Top of Cement, Bottom of Cement.

Casing Fluid Level from Surface: How Determined? Date:
Casing Squeeze(s): to w / sacks of cement, to w / sacks of cement. Date:
Do you have a valid Oil & Gas Lease? Yes No
Depth and Type: Junk in Hole at Tools in Hole at Casing Leaks: Yes No Depth of casing leak(s):
Type Completion: ALT. I ALT. II Depth of: DV Tool: w / sacks of cement Port Collar: w / sack of cement
Packer Type: Size: Inch Set at: Feet
Total Depth: Plug Back Depth: Plug Back Method:

Geological Date:

Table with 4 columns: Formation Name, Formation Top, Formation Base, Completion Information. Rows 1 and 2.

UNDER PENALTY OF PERJURY I HEREBY ATTEST THAT THE INFORMATION CONTAINED HEREIN IS TRUE AND CORRECT TO THE BEST OF MY KNOWLEDGE

Submitted Electronically

Do NOT Write in This Space - KCC USE ONLY
Date Tested: Results: Date Plugged: Date Repaired: Date Put Back in Service:
Review Completed by: Comments:
TA Approved: Yes Denied Date:

Mail to the Appropriate KCC Conservation Office:

Table with 3 columns: District Office #, Address, Phone. Rows 1-4.

General

Well ID 121540
 Well MYRA 3406 3-8H
 Company Sandridge
 Operator - * -
 Lease Name MYRA 3406 3-8H
 Elevation 1289.00 ft
 Production Method Other
 Dataset Description
 Shot 1

Comment

Surface Unit

Manufacturer - * -
 Unit Class Conventional
 Unit API Number - * -
 Measured Stroke Length 100.000 in
 Rotation CW
 Counter Balance Effect (Weights Level) - * - Klb
 Weight Of Counter Weights 2000 lb

Prime Mover

Motor Type Electric
 Rated HP - * - HP
 Run Time 24 hr/day
 MFG/Comment - * -

Electric Motor Parameters

Rated Full Load AMPS - * -
 Rated Full Load RPM - * -
 Synchronous RPM 1200
 Voltage - * -
 Hertz 60
 Phase 3
 Power Consumption 5
 Power Demand 8 \$/KW

Tubulars

Tubing OD 3.500 in
 Casing OD 7.000 in
 Average Joint Length 31.700 ft
 Anchor Depth - * - ft
 Kelly Bushing 16.00 ft

Pump

Plunger Diameter - * - in
 Pump Intake Depth 5171.00 ft
 **Total Rod Length < Pump Depth

Polished Rod

Polished Rod Diameter - * - in

Rod String

	Top Taper	Taper 2	Taper 3	Taper 4	Taper 5	Taper 6
Rod Type	- * -	- * -	- * -	- * -	- * -	- * -
Rod Length	- * -	- * -	- * -	- * -	- * -	- * - ft
Rod Diameter	- * -	- * -	- * -	- * -	- * -	- * - in
Rod Weight	0.0	0.0	0.0	0.0	0.0	0.0 lb

Total Rod Length 0
 Total Rod Weight 0.00

Damp Up 0.050855
 Damp Down 0.050855

Conditions

Pressure

Static BHP 547.7 psi (g)
 Static BHP Method Acoustic
 Static BHP Date 05/19/2020
 Producing BHP - * - psi (g)
 Producing BHP Method - * -
 Producing BHP Date - * -
 Formation Depth 5315.00 ft

Production

Oil Production 0 BBL/D
 Water Production 1 BBL/D
 Gas Production - * - Mscf/D
 Production Date 03/19/2018

Temperatures

Surface Temperature 70 deg F
 Bottomhole Temperature 150 deg F

Surface Producing Pressures

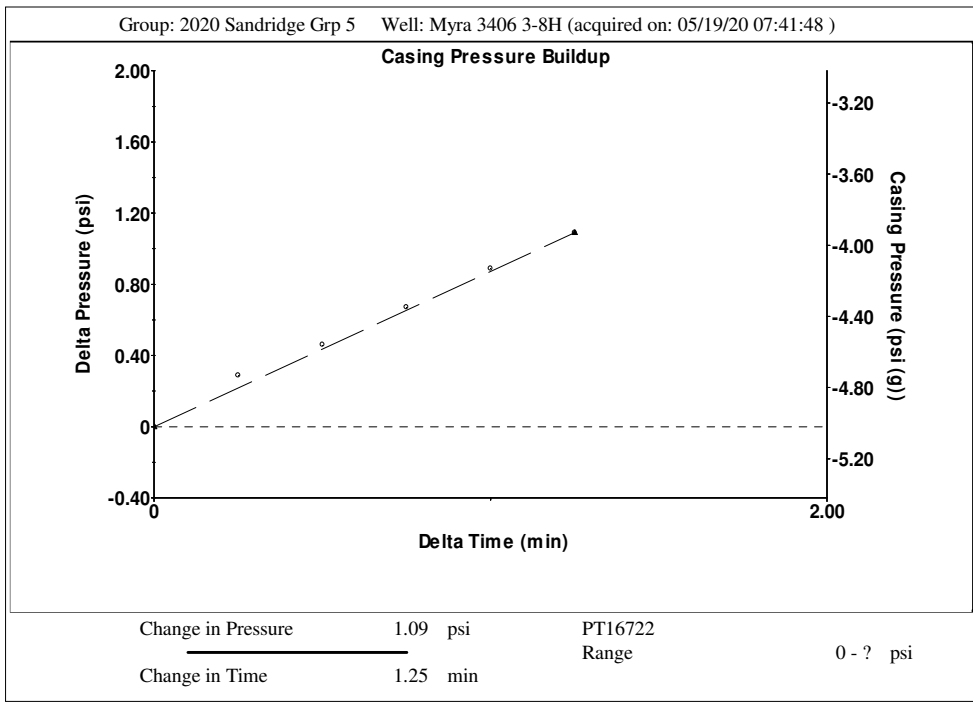
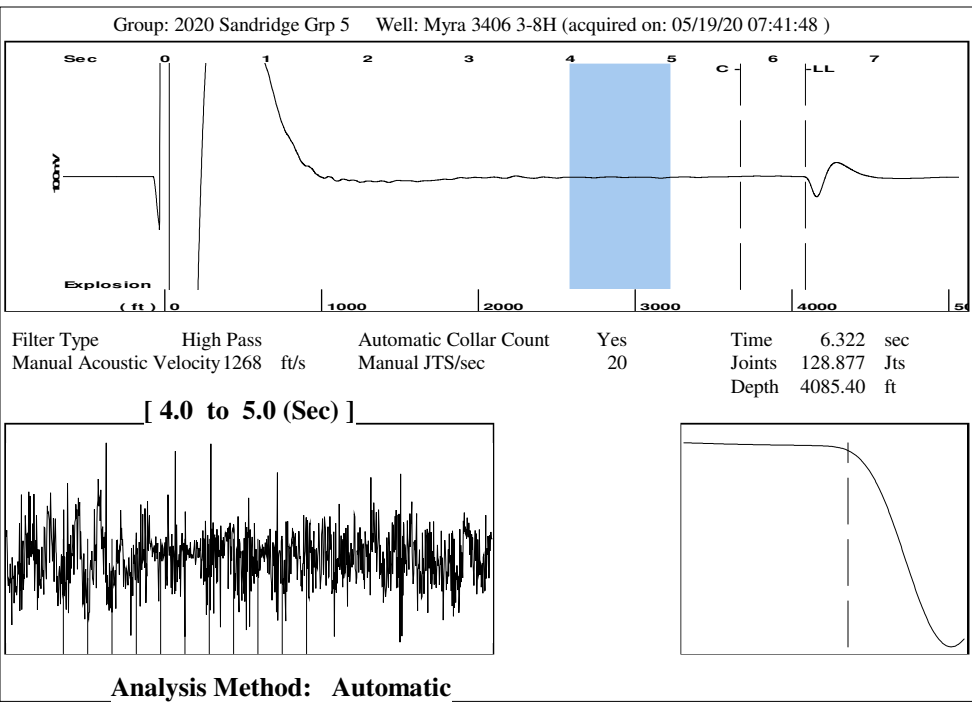
Tubing Pressure - * - psi (g)
 Casing Pressure -5.0 psi (g)

Fluid Properties

Oil API 40 deg.API
 Water Specific Gravity 1.05 Sp.Gr.H2O

Casing Pressure Buildup

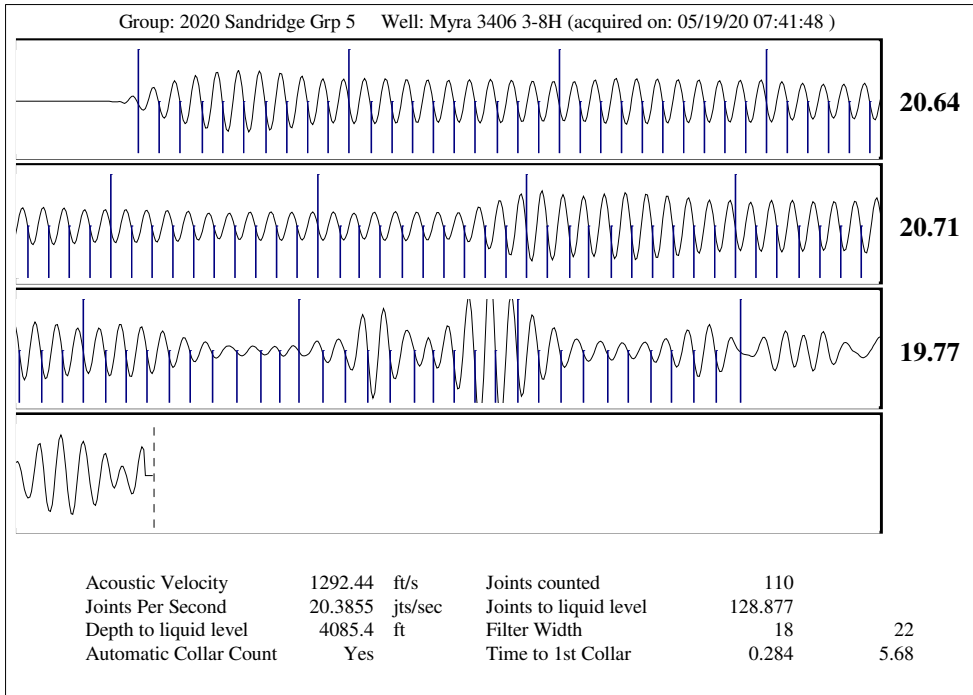
Change in Pressure 1.091 psi
 Over Change in Time 1.25 min



Group: 2020 Sandridge Grp 5 Well: Myra 3406 3-8H (acquired on: 05/19/20 07:41:48)

Production	Potential	Casing Pressure	Static
Current		-5.0 psi (g)	
Oil 0	- * - BBL/D	Casing Pressure Buildup	Oil Column Height
Water 1	- * - BBL/D	1.091 psi	MD 0 ft
Gas - * -	- * - Mscf/D	1.25 min	
		Gas/Liquid Interface Pressure	Water Column Height
		-4.0 psi (g)	MD 1214 ft
IPR Method	Vogel	Liquid Level Depth	
PBHP/SBHP	- * -	4085.40 ft	
Production Efficiency	0.0	Tubing Intake Depth	
		5171.00 ft	
Oil 40 deg.API		Formation Depth	
Water 1.05 Sp.Gr.H2O		5315.00 ft	
Gas 0.71 Sp.Gr.AIR			
Acoustic Velocity	1292.44 ft/s	Static BHP	547.7 psi (g)

Myra 3406 3-8H



June 10, 2020

Collette Davis
SandRidge Exploration and Production LLC
123 ROBERT S. KERR AVE
OKLAHOMA CITY, OK 73102-6406

Re: Temporary Abandonment
API 15-077-21960-01-00
MYRA 3406 3-8H
SE/4 Sec.08-34S-06W
Harper County, Kansas

Dear Collette Davis:

"Your temporary abandonment (TA) application for the well listed above has been approved. In accordance with K.A.R. 82-3-111 the TA status of this well will expire 06/10/2021.

- * If you return this well to service or plug it, please notify the District Office.
- * If you sell this well you are required to file a Transfer of Operator form, T-1.
- * If the well will remain temporarily abandoned, you must submit a new TA application, CP-111, before 06/10/2021.

You may contact me at the number above if you have questions.

Very truly yours,

Steve VanGieson"