

KANSAS CORPORATION COMMISSION
OIL & GAS CONSERVATION DIVISION

TEMPORARY ABANDONMENT WELL APPLICATION

OPERATOR: License#
Name:
Address 1:
Address 2:
City: State: Zip:
Contact Person:
Phone:
Contact Person Email:
Field Contact Person:
Field Contact Person Phone:

API No. 15-
Spot Description:
Sec. Twp. S. R.
feet from N / S Line of Section
feet from E / W Line of Section
GPS Location: Lat: , Long:
Datum: NAD27 NAD83 WGS84
County: Elevation: GL KB
Lease Name: Well #:
Well Type: (check one) Oil Gas OG WSW Other:
SWD Permit #: ENHR Permit #:
Gas Storage Permit #:
Spud Date: Date Shut-In:

Table with 7 columns: Conductor, Surface, Production, Intermediate, Liner, Tubing. Rows include Size, Setting Depth, Amount of Cement, Top of Cement, Bottom of Cement.

Casing Fluid Level from Surface: How Determined? Date:
Casing Squeeze(s): to w / sacks of cement, to w / sacks of cement. Date:
Do you have a valid Oil & Gas Lease? Yes No
Depth and Type: Junk in Hole at Tools in Hole at Casing Leaks: Yes No Depth of casing leak(s):
Type Completion: ALT. I ALT. II Depth of: DV Tool: w / sacks of cement Port Collar: w / sack of cement
Packer Type: Size: Inch Set at: Feet
Total Depth: Plug Back Depth: Plug Back Method:

Geological Data:

Table with 4 columns: Formation Name, Formation Top, Formation Base, Completion Information. Rows 1 and 2.

UNDER PENALTY OF PERJURY I HEREBY ATTEST THAT THE INFORMATION CONTAINED HEREIN IS TRUE AND CORRECT TO THE BEST OF MY KNOWLEDGE

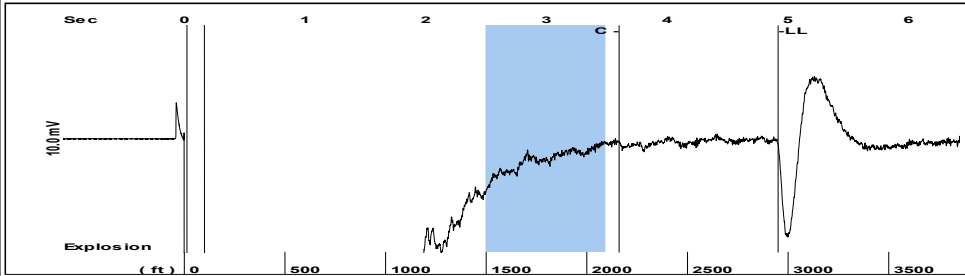
Submitted Electronically

Do NOT Write in This Space - KCC USE ONLY
Date Tested: Results: Date Plugged: Date Repaired: Date Put Back in Service:
Review Completed by: Comments:
TA Approved: Yes Denied Date:

Mail to the Appropriate KCC Conservation Office:

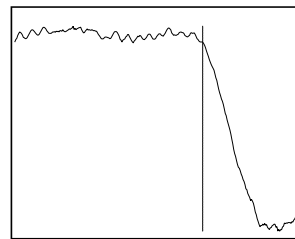
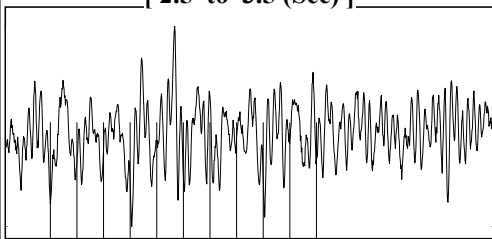
Table with 3 columns: District Office #, Address, Phone. Rows 1-4.

Group: MyWells Well: Lee # 7-3 (acquired on: 06/03/20 09:48:22)



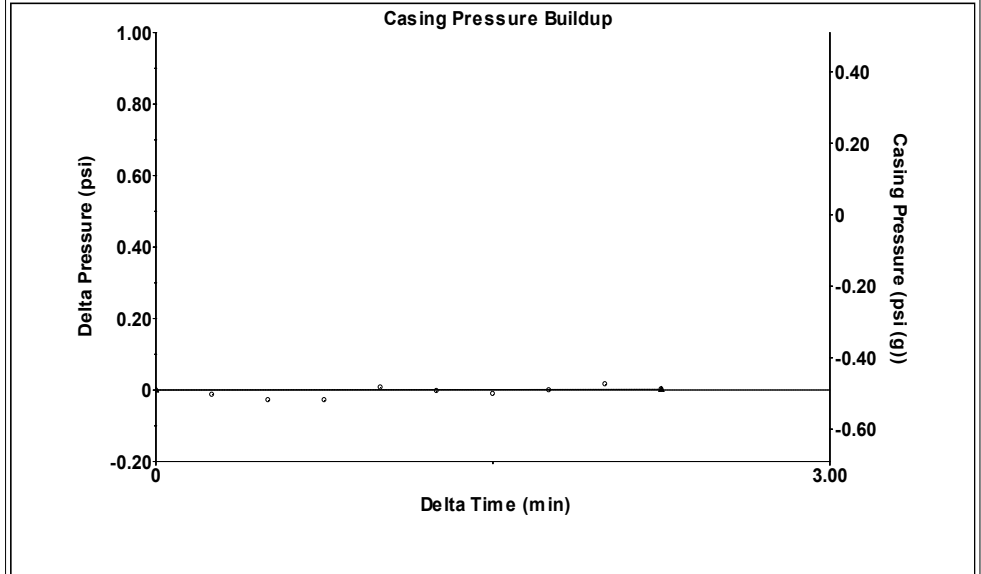
Filter Type High Pass Automatic Collar Count Yes Time 4.922 sec
 Manual Acoustic Velo 1161.17 ft/s Manual JTS/sec 18.315 Joints 93.063 Jts
 Depth 2950.10 ft

[2.5 to 3.5 (Sec)]



Analysis Method: Automatic

Group: MyWells Well: Lee # 7-3 (acquired on: 06/03/20 09:48:22)

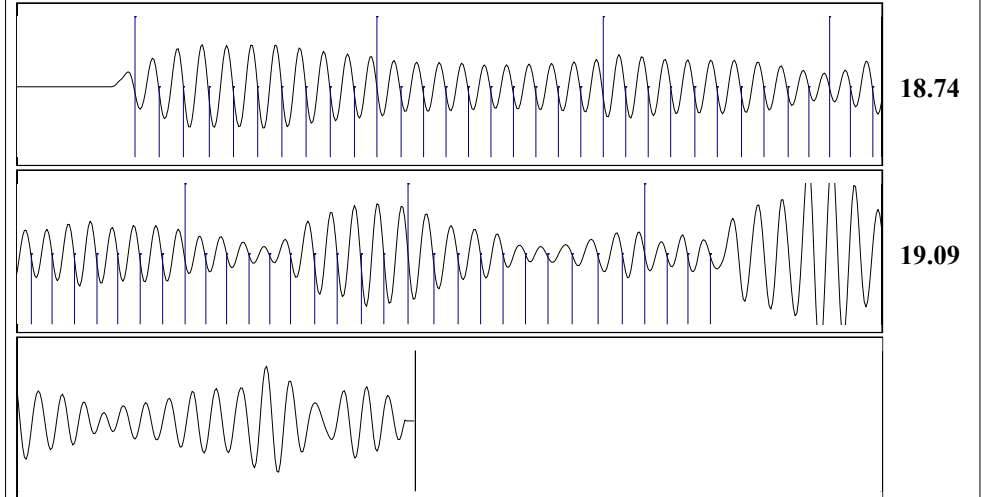


Change in Pressure 0.00 psi PT 17384
 Change in Time 2.25 min Range 0 - ? psi

Group: MyWells Well: Lee # 7-3 (acquired on: 06/03/20 09:48:22)

Production					
Current	Potential	Casing Pressure		Producing	
Oil - *-	- *- BBL/D	-0.5 psi (g)		Annular	
Water - *-	- *- BBL/D	Casing Pressure Buildup		Gas Flow	0 Mscf/D
Gas - *-	- *- Mscf/D	0.002 psi		% Liquid	100 %
		2.25 min			
IPR Method	Vogel	Gas/Liquid Interface Pressure			
PBHP/SBHP	- *-	0.7 psi (g)			
Production Efficiency	0.0				
		Liquid Level Depth			
Oil 40 deg.API		2950.10 ft			
Water 1.05 Sp.Gr.H2O		Pump Intake Depth			
Gas 0.79 Sp.Gr.AIR		4990.00 ft			
Acoustic Velocity	1198.74 ft/s	Formation Depth			
		4990.00 ft			
Formation Submergence				Pump Intake	680.6 psi (g)
Total Gaseous Liquid Column HT (TVD)	2040 ft			Producing BHP	680.6 psi (g)
Equivalent Gas Free Liquid HT (TVD)	2040 ft			Static BHP	- *- psi (g)
Acoustic Test					

Group: MyWells Well: Lee # 7-3 (acquired on: 06/03/20 09:48:22)



Acoustic Velocity 1198.74 ft/s Joints counted 63
 Joints Per Second 18.9076 jts/sec Joints to liquid level 93.063
 Depth to liquid level 2950.1 ft Filter Width 16.315 20.315
 Automatic Collar Count Yes Time to 1st Collar 0.272 3.604

June 16, 2020

Melody C. Fletcher
Oil Producers, Inc. of Kansas
1710 N Waterfront Pkwy
WICHITA, KS 67206-6603

Re: Temporary Abandonment
API 15-093-20192-00-00
LEE 7-3
SE/4 Sec.33-25S-36W
Kearny County, Kansas

Dear Melody C. Fletcher:

"Your temporary abandonment (TA) application for the well listed above has been approved. In accordance with K.A.R. 82-3-111 the TA status of this well will expire 06/16/2021.

- * If you return this well to service or plug it, please notify the District Office.
- * If you sell this well you are required to file a Transfer of Operator form, T-1.
- * If the well will remain temporarily abandoned, you must submit a new TA application, CP-111, before 06/16/2021.

You may contact me at the number above if you have questions.

Very truly yours,

Michael Maier"