

KANSAS CORPORATION COMMISSION
OIL & GAS CONSERVATION DIVISION

TEMPORARY ABANDONMENT WELL APPLICATION

OPERATOR: License#
Name:
Address 1:
Address 2:
City: State: Zip:
Contact Person:
Phone:
Contact Person Email:
Field Contact Person:
Field Contact Person Phone:

API No. 15-
Spot Description:
Sec. Twp. S. R.
GPS Location: Lat: Long:
Datum: NAD27 NAD83 WGS84
County: Elevation:
Lease Name: Well #:
Well Type: Oil Gas OG WSW Other:
SWD Permit #: ENHR Permit #:
Gas Storage Permit #:
Spud Date: Date Shut-In:

Table with 7 columns: Conductor, Surface, Production, Intermediate, Liner, Tubing. Rows include Size, Setting Depth, Amount of Cement, Top of Cement, Bottom of Cement.

Casing Fluid Level from Surface: How Determined? Date:
Casing Squeeze(s): to w / sacks of cement, to w / sacks of cement. Date:
Do you have a valid Oil & Gas Lease? Yes No
Depth and Type: Junk in Hole at Tools in Hole at Casing Leaks: Yes No Depth of casing leak(s):
Type Completion: ALT. I ALT. II Depth of: DV Tool: w / sacks of cement Port Collar: w / sack of cement
Packer Type: Size: Inch Set at: Feet
Total Depth: Plug Back Depth: Plug Back Method:

Geological Date:

Table with 4 columns: Formation Name, Formation Top, Formation Base, Completion Information. Rows 1 and 2.

UNDER PENALTY OF PERJURY I HEREBY ATTEST THAT THE INFORMATION CONTAINED HEREIN IS TRUE AND CORRECT TO THE BEST OF MY KNOWLEDGE

Submitted Electronically

Do NOT Write in This Space - KCC USE ONLY
Date Tested: Results: Date Plugged: Date Repaired: Date Put Back in Service:
Review Completed by: Comments:
TA Approved: Yes Denied Date:

Mail to the Appropriate KCC Conservation Office:

Table with 3 columns: District Office, Address, Phone. Rows for District Office #1, #2, #3, #4.

### General

Well ID 121726  
 Well Jennie 3510 2-10H  
 Company Sandridge  
 Operator - \* -  
 Lease Name Jennie 3510 2-10H  
 Elevation 1297.00 ft  
 Production Method Other  
 Dataset Description

Comment

### Surface Unit

Manufacturer - \* -  
 Unit Class Conventional  
 Unit API Number - \* -  
 Measured Stroke Length - \* - in  
 Rotation CW  
 Counter Balance Effect (Weights Level) - \* - Klb  
 Weight Of Counter Weights 2000 lb

### Prime Mover

Motor Type Electric  
 Rated HP - \* - HP  
 Run Time 24 hr/day  
 MFG/Comment - \* -

### Electric Motor Parameters

Rated Full Load AMPS - \* -  
 Rated Full Load RPM - \* -  
 Synchronous RPM 1200  
 Voltage - \* -  
 Hertz 60  
 Phase 3  
 Power Consumption 5  
 Power Demand 8 \$/KW

### Tubulars

Tubing OD 2.875 in  
 Casing OD 7.000 in  
 Average Joint Length 31.700 ft  
 Anchor Depth - \* - ft  
 Kelly Bushing 20.00 ft

### Pump

Plunger Diameter - \* - in  
 Pump Intake Depth 4850.00 ft  
 \*\*Total Rod Length < Pump Depth

### Polished Rod

Polished Rod Diameter - \* - in

### Rod String

	Top Taper	Taper 2	Taper 3	Taper 4	Taper 5	Taper 6
Rod Type	- * -	- * -	- * -	- * -	- * -	- * -
Rod Length	- * -	- * -	- * -	- * -	- * -	- * - ft
Rod Diameter	- * -	- * -	- * -	- * -	- * -	- * - in
Rod Weight	0.0	0.0	0.0	0.0	0.0	0.0 lb

Total Rod Length 0  
 Total Rod Weight 0.00

Damp Up 0.05  
 Damp Down 0.05

### Conditions

#### Pressure

Static BHP 454.2 psi (g)  
 Static BHP Method Acoustic  
 Static BHP Date 06/17/2020

Producing BHP - \* - psi (g)  
 Producing BHP Method - \* -  
 Producing BHP Date - \* -  
 Formation Depth 5390.00 ft

#### Surface Producing Pressures

Tubing Pressure 0.0 psi (g)  
 Casing Pressure 364.6 psi (g)

#### Casing Pressure Buildup

Change in Pressure 0.021 psi  
 Over Change in Time 1.75 min

#### Production

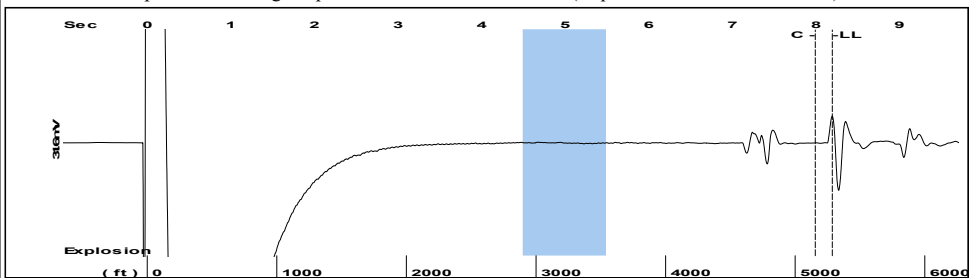
Oil Production 0 BBL/D  
 Water Production 1 BBL/D  
 Gas Production - \* - Mscf/D  
 Production Date 06/26/2017

#### Temperatures

Surface Temperature 70 deg F  
 Bottomhole Temperature 150 deg F

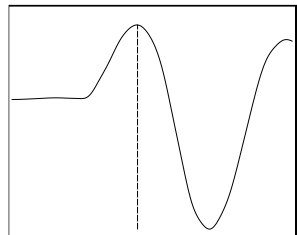
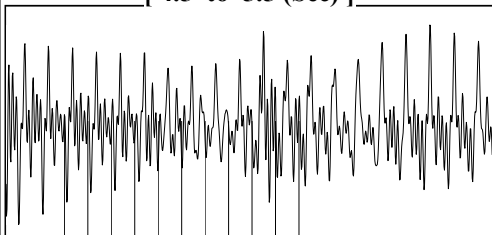
#### Fluid Properties

Oil API 40 deg.API  
 Water Specific Gravity 1.05 Sp.Gr.H2O

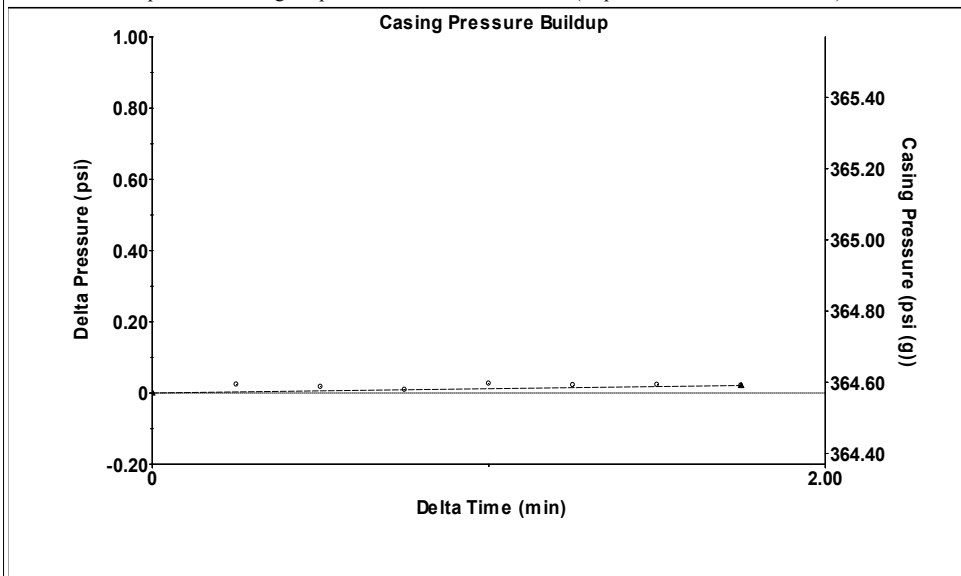


Filter Type High Pass Automatic Collar Count Yes Time 8.195 sec  
 Manual Acoustic Veloc 1315.35 ft/s Manual JTS/sec 20.7469 Joints 166.746 Jts  
 Depth 5285.86 ft

[ 4.5 to 5.5 (Sec) ]

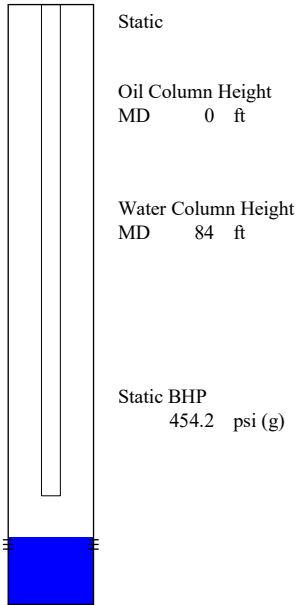


**Analysis Method: Automatic**

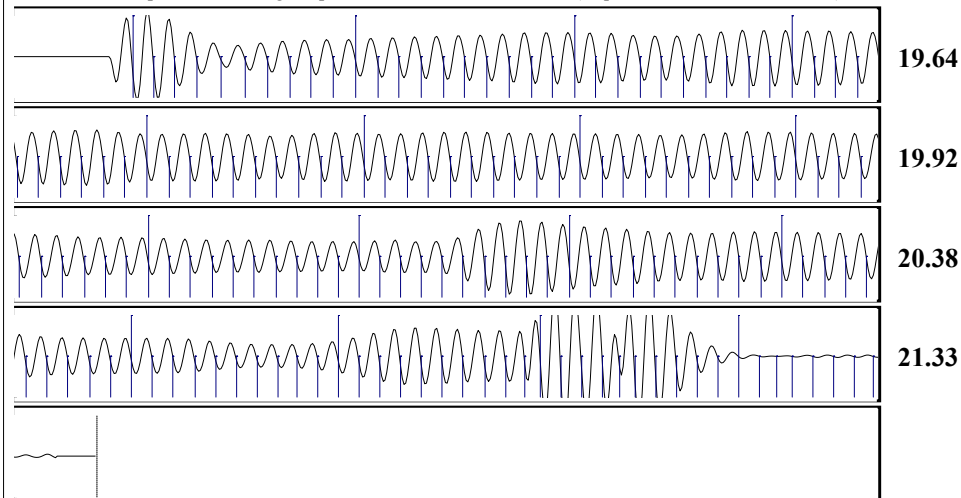


Change in Pressure 0.02 psi PT16722  
 Change in Time 1.75 min Range 0 - ? psi

<b>Production</b>		<b>Potential</b>	<b>Casing Pressure</b>
Oil 0	- * - BBL/D		364.6 psi (g)
Water 1	- * - BBL/D		Casing Pressure Buildup
Gas - * -	- * - Mscf/D		0.021 psi
			1.75 min
<b>IPR Method</b>	<b>Vogel</b>	<b>Gas/Liquid Interface Pressure</b>	
PBHP/SBHP	- * -	416.0 psi (g)	
<b>Production Efficiency</b>	0.0		
<b>Oil</b> 40 deg.API		<b>Liquid Level Depth</b>	
<b>Water</b> 1.05 Sp.Gr.H2O		5285.86 ft	
<b>Gas</b> 0.68 Sp.Gr.AIR		<b>Tubing Intake Depth</b>	
		4850.00 ft	
<b>Acoustic Velocity</b> 1290.02 ft/s		<b>Formation Depth</b>	
		5390.00 ft	



Jennie 3510 2-10H



Acoustic Velocity	1290.02 ft/s	Joints counted	157
Joints Per Second	20.3473 jts/sec	Joints to liquid level	166.746
Depth to liquid level	5285.86 ft	Filter Width	18.7469 22.7469
Automatic Collar Count	Yes	Time to 1st Collar	0.276 7.992

June 23, 2020

Collette Davis  
SandRidge Exploration and Production LLC  
123 ROBERT S. KERR AVE  
OKLAHOMA CITY, OK 73102-6406

Re: Temporary Abandonment  
API 15-007-23919-01-00  
JENNIE 3510 2-10H  
NE/4 Sec.10-35S-10W  
Barber County, Kansas

Dear Collette Davis:

"Your temporary abandonment (TA) application for the well listed above has been approved. In accordance with K.A.R. 82-3-111 the TA status of this well will expire 06/23/2021.

- \* If you return this well to service or plug it, please notify the District Office.
- \* If you sell this well you are required to file a Transfer of Operator form, T-1.
- \* If the well will remain temporarily abandoned, you must submit a new TA application, CP-111, before 06/23/2021.

You may contact me at the number above if you have questions.

Very truly yours,

Michael Maier"