

KANSAS CORPORATION COMMISSION
OIL & GAS CONSERVATION DIVISION

TEMPORARY ABANDONMENT WELL APPLICATION

OPERATOR: License#
Name:
Address 1:
Address 2:
City: State: Zip:
Contact Person:
Phone:
Contact Person Email:
Field Contact Person:
Field Contact Person Phone:

API No. 15-
Spot Description:
Sec. Twp. S. R.
GPS Location: Lat, Long
Datum: NAD27, NAD83, WGS84
County: Elevation:
Lease Name: Well #:
Well Type: Oil, Gas, OG, WSW, Other
SWD Permit #: ENHR Permit #:
Gas Storage Permit #:
Spud Date: Date Shut-In:

Table with 7 columns: Conductor, Surface, Production, Intermediate, Liner, Tubing. Rows include Size, Setting Depth, Amount of Cement, Top of Cement, Bottom of Cement.

Casing Fluid Level from Surface: How Determined? Date:
Casing Squeeze(s): to w / sacks of cement, to w / sacks of cement. Date:
Do you have a valid Oil & Gas Lease? Yes No
Depth and Type: Junk in Hole at Tools in Hole at Casing Leaks: Yes No Depth of casing leak(s):
Type Completion: ALT. I ALT. II Depth of: DV Tool: w / sacks of cement Port Collar: w / sack of cement
Packer Type: Size: Inch Set at: Feet
Total Depth: Plug Back Depth: Plug Back Method:

Geological Date:

Table with 4 columns: Formation Name, Formation Top, Formation Base, Completion Information. Rows 1 and 2.

UNDER PENALTY OF PERJURY I HEREBY ATTEST THAT THE INFORMATION CONTAINED HEREIN IS TRUE AND CORRECT TO THE BEST OF MY KNOWLEDGE

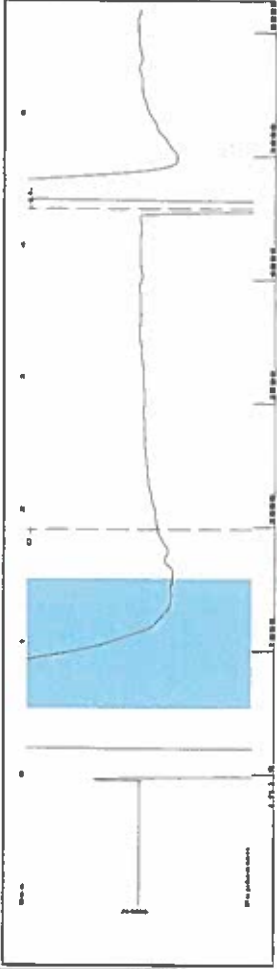
Submitted Electronically

Form with fields: Do NOT Write in This Space - KCC USE ONLY, Date Tested, Results, Date Plugged, Date Repaired, Date Put Back in Service, Review Completed by, Comments, TA Approved: Yes Denied, Date.

Mail to the Appropriate KCC Conservation Office:

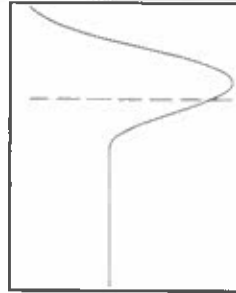
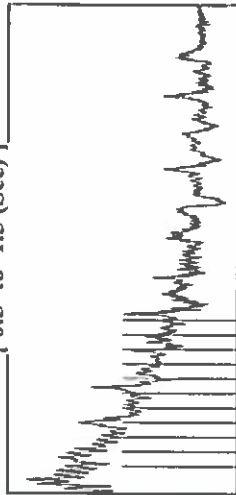
Table with 3 columns: District Office #, Address, Phone. Rows 1-4.

Group: SUBLETTE Well: SHALER A-2 (acquired on: 06/22/20 11:57:00)



Filter Type High Pass Automatic Collar Count Yes Time 4.278 sec
 Manual Acoustic Velo 2113.33 ft/s Manual JTS/sec 33.3333
 Joints 144.298 Jts
 Depth 4574.23 ft

[0.5 to 1.5 (Sec)]

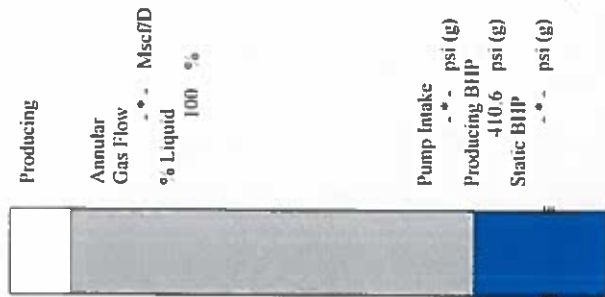


Analysis Method: Automatic

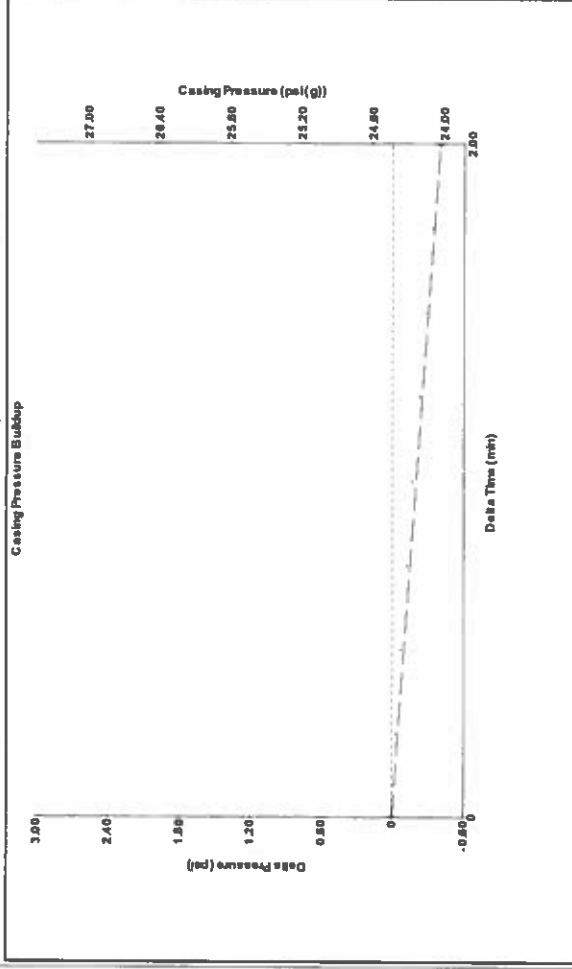
Group: SUBLETTE Well: SHALER A-2 (acquired on: 06/22/20 11:57:00)

Production	Potential	Casing Pressure	Producing
Oil	0.0	24.4 psi (g)	Annular
Water	0.0	Casing Pressure Buildup	Gas Flow
Gas	0.0	-0.401 psi	% Liquid
IPR Method	Vogel	2.00 min	100 %
PBHP/SBHP	0.0	Gas/Liquid Interface Pressure	
Production Efficiency		27.9 psi (g)	
Oil	40 deg-API	Liquid Level Depth	
Water	1.05 Sp.Gr.H2O	4574.23 ft	
Gas	0.55 Sp.Gr.AIR	Pump Intake Depth	
Acoustic Velocity	2138.49 ft/s	Formation Depth	
		5416.00 ft	

Formation Submergence		
Total Gaseous Liquid Column HIT (TVD)	842 ft	
Equivalent Gas Free Liquid HIT (TVD)	842 ft	
6/22/2020		

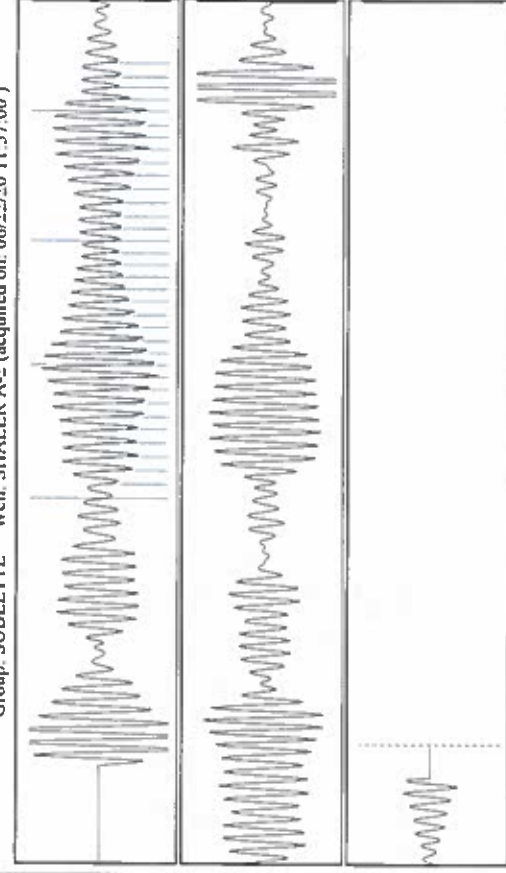


Group: SUBLETTE Well: SHALER A-2 (acquired on: 06/22/20 11:57:00)



Change in Pressure -0.40 psi Range PT14679
 Change in Time 2.00 min

Group: SUBLETTE Well: SHALER A-2 (acquired on: 06/22/20 11:57:00)



Acoustic Velocity 2138.49 ft/s Joints counted 34
 Joints Per Second 33.7302 Jts/sec 144.298
 Depth to liquid level 4574.23 ft Filter Width 35.3333
 Automatic Collar Count Yes Time to 1st Collar 0.844 1.852

June 23, 2020

Katherine McClurkan
Merit Energy Company, LLC
13727 Noel Road, Suite 1200
Dallas, TX 75240

Re: Temporary Abandonment
API 15-081-22040-00-00
Shaler A 2
NE/4 Sec.10-28S-34W
Haskell County, Kansas

Dear Katherine McClurkan:

"Your temporary abandonment (TA) application for the well listed above has been approved. In accordance with K.A.R. 82-3-111 the TA status of this well will expire 06/23/2021.

- * If you return this well to service or plug it, please notify the District Office.
- * If you sell this well you are required to file a Transfer of Operator form, T-1.
- * If the well will remain temporarily abandoned, you must submit a new TA application, CP-111, before 06/23/2021.

You may contact me at the number above if you have questions.

Very truly yours,

Michael Maier"