

KANSAS CORPORATION COMMISSION
OIL & GAS CONSERVATION DIVISION

TEMPORARY ABANDONMENT WELL APPLICATION

OPERATOR: License#
Name:
Address 1:
Address 2:
City: State: Zip:
Contact Person:
Phone:
Contact Person Email:
Field Contact Person:
Field Contact Person Phone:

API No. 15-
Spot Description:
Sec. Twp. S. R.
GPS Location: Lat: Long:
Datum: NAD27 NAD83 WGS84
County: Elevation:
Lease Name: Well #:
Well Type: Oil Gas OG WSW Other:
SWD Permit #: ENHR Permit #:
Gas Storage Permit #:
Spud Date: Date Shut-In:

Table with 7 columns: Conductor, Surface, Production, Intermediate, Liner, Tubing. Rows include Size, Setting Depth, Amount of Cement, Top of Cement, Bottom of Cement.

Casing Fluid Level from Surface: How Determined? Date:
Casing Squeeze(s): to w / sacks of cement, to w / sacks of cement. Date:
Do you have a valid Oil & Gas Lease? Yes No
Depth and Type: Junk in Hole at Tools in Hole at Casing Leaks: Yes No Depth of casing leak(s):
Type Completion: ALT. I ALT. II Depth of: DV Tool: w / sacks of cement Port Collar: w / sack of cement
Packer Type: Size: Inch Set at: Feet
Total Depth: Plug Back Depth: Plug Back Method:

Geological Date:

Table with 4 columns: Formation Name, Formation Top, Formation Base, Completion Information. Rows 1 and 2.

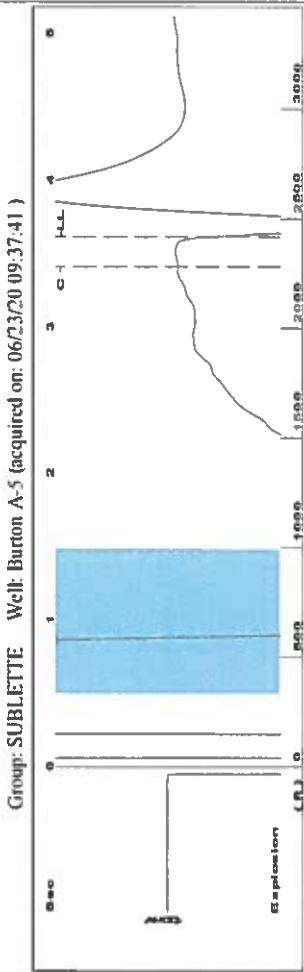
UNDER PENALTY OF PERJURY I HEREBY ATTEST THAT THE INFORMATION CONTAINED HEREIN IS TRUE AND CORRECT TO THE BEST OF MY KNOWLEDGE

Submitted Electronically

Do NOT Write in This Space - KCC USE ONLY
Date Tested: Results: Date Plugged: Date Repaired: Date Put Back in Service:
Review Completed by: Comments:
TA Approved: Yes Denied Date:

Mail to the Appropriate KCC Conservation Office:

Map of Kansas with 4 numbered districts. Table with 2 columns: Office Name/Address, Phone Number.



Filter Type High Pass Automatic Collar Count Yes
 Manual Acoustic Velo 1320.83 ft/s Manual JTS/sec 20.8333
 Time 3.614 sec
 Joints 76.2545 Jts
 Depth 2417.27 ft

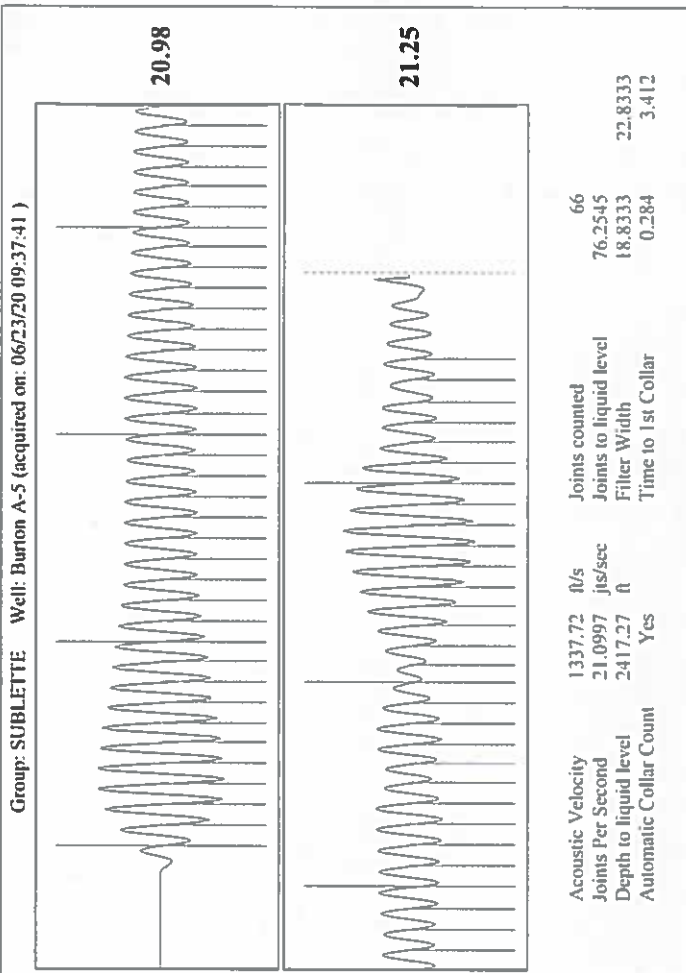
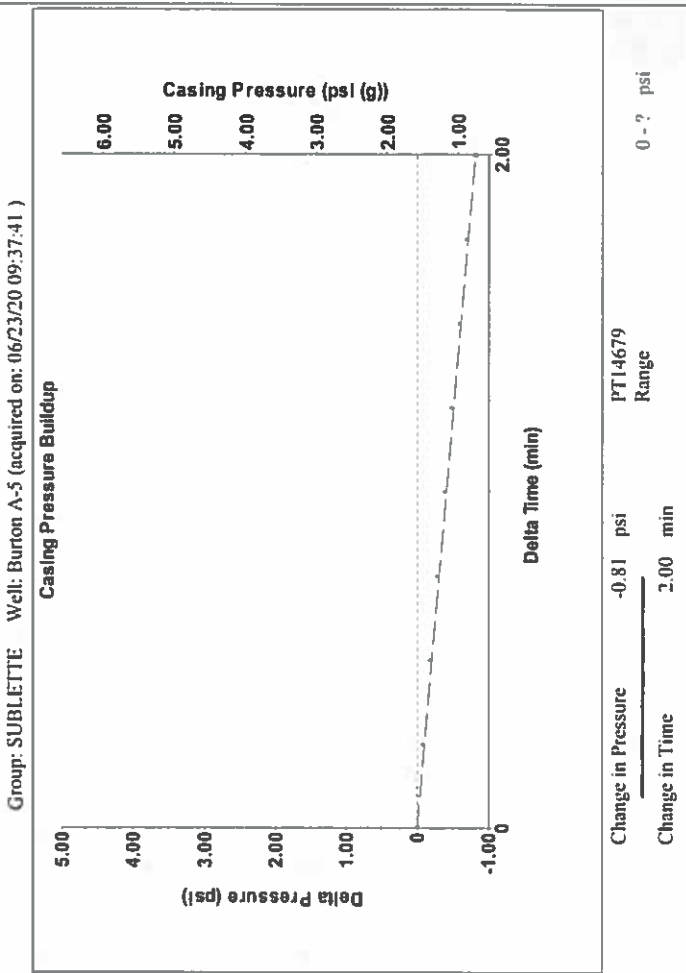
[0.5 to 1.5 (Sec)]

Analysis Method: Automatic

Group: SUBLETTE Well: Burton A-5 (acquired on: 06/23/20 09:37:41)

Production	Potential	Casing Pressure	Producing
Oil	-. BBL/D	1.6 psi (g)	Annular
Water	-. BBL/D	Casing Pressure Buildup	Gas Flow
Gas	-. Mscf/D	-0.814 psi	0 Mscf/D
IPR Method	Vogel	2.00 min	% Liquid
PBHP/SBHP	-. -	Gas/Liquid Interface Pressure	100 %
Production Efficiency	0.0	2.5 psi (g)	
Oil	40 deg API	Liquid Level Depth	
Water	1.05 Sp.Gr. H2O	2417.27 ft	
Gas	0.67 Sp.Gr. AIR	Pump Intake Depth	
Acoustic Velocity	1337.72 ft/s	2972.00 ft	
		Formation Depth	
		2881.00 ft	
Formation Submergence			
Total Gaseous Liquid Column HT (TVD)	555 ft		
Equivalent Gas Free Liquid HT (TVD)	555 ft		

6/23/2020



June 30, 2020

Katherine McClurkan
Merit Energy Company, LLC
13727 Noel Road, Suite 1200
Dallas, TX 75240-7362

Re: Temporary Abandonment
API 15-081-21471-00-00
Burton A 5
NE/4 Sec.06-29S-34W
Haskell County, Kansas

Dear Katherine McClurkan:

"Your temporary abandonment (TA) application for the well listed above has been approved. In accordance with K.A.R. 82-3-111 the TA status of this well will expire 06/30/2021.

- * If you return this well to service or plug it, please notify the District Office.
- * If you sell this well you are required to file a Transfer of Operator form, T-1.
- * If the well will remain temporarily abandoned, you must submit a new TA application, CP-111, before 06/30/2021.

You may contact me at the number above if you have questions.

Very truly yours,

Scott Alberg"