

KANSAS CORPORATION COMMISSION
OIL & GAS CONSERVATION DIVISION

TEMPORARY ABANDONMENT WELL APPLICATION

OPERATOR: License#
Name:
Address 1:
Address 2:
City: State: Zip:
Contact Person:
Phone:
Contact Person Email:
Field Contact Person:
Field Contact Person Phone:

API No. 15-
Spot Description:
Sec. Twp. S. R.
GPS Location: Lat: Long:
Datum: NAD27 NAD83 WGS84
County: Elevation:
Lease Name: Well #:
Well Type: Oil Gas OG WSW Other:
SWD Permit #: ENHR Permit #:
Gas Storage Permit #:
Spud Date: Date Shut-In:

Table with 7 columns: Conductor, Surface, Production, Intermediate, Liner, Tubing. Rows include Size, Setting Depth, Amount of Cement, Top of Cement, Bottom of Cement.

Casing Fluid Level from Surface: How Determined? Date:
Casing Squeeze(s): to w / sacks of cement, to w / sacks of cement. Date:
Do you have a valid Oil & Gas Lease? Yes No
Depth and Type: Junk in Hole at Tools in Hole at Casing Leaks: Yes No Depth of casing leak(s):
Type Completion: ALT. I ALT. II Depth of: DV Tool: w / sacks of cement Port Collar: w / sack of cement
Packer Type: Size: Inch Set at: Feet
Total Depth: Plug Back Depth: Plug Back Method:

Geological Data:

Table with 4 columns: Formation Name, Formation Top, Formation Base, Completion Information. Rows 1 and 2.

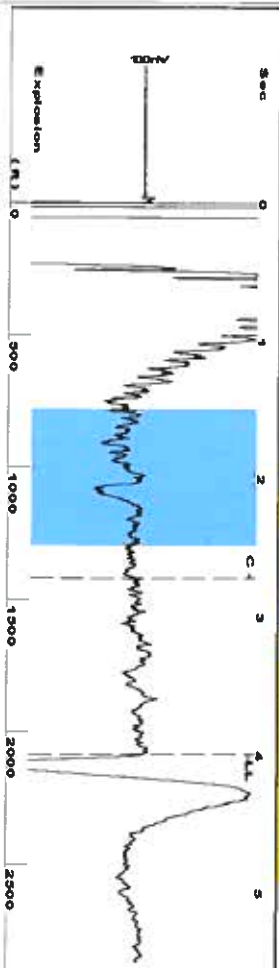
UNDER PENALTY OF PERJURY I HEREBY ATTEST THAT THE INFORMATION CONTAINED HEREIN IS TRUE AND CORRECT TO THE BEST OF MY KNOWLEDGE

Submitted Electronically

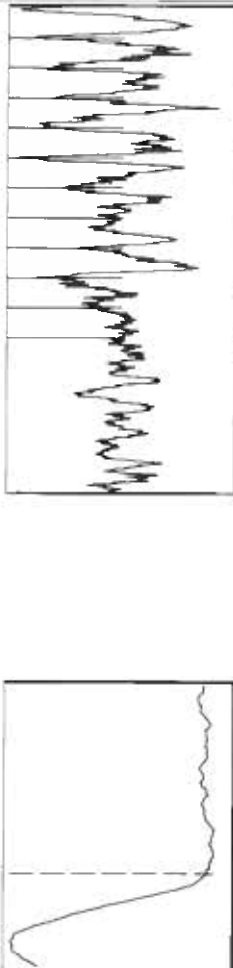
Do NOT Write in This Space - KCC USE ONLY
Date Tested: Results: Date Plugged: Date Repaired: Date Put Back in Service:
Review Completed by: Comments:
TA Approved: Yes Denied Date:

Mail to the Appropriate KCC Conservation Office:

Table with 2 columns: Office Address, Phone. Rows for District Office #1, #2, #3, #4.

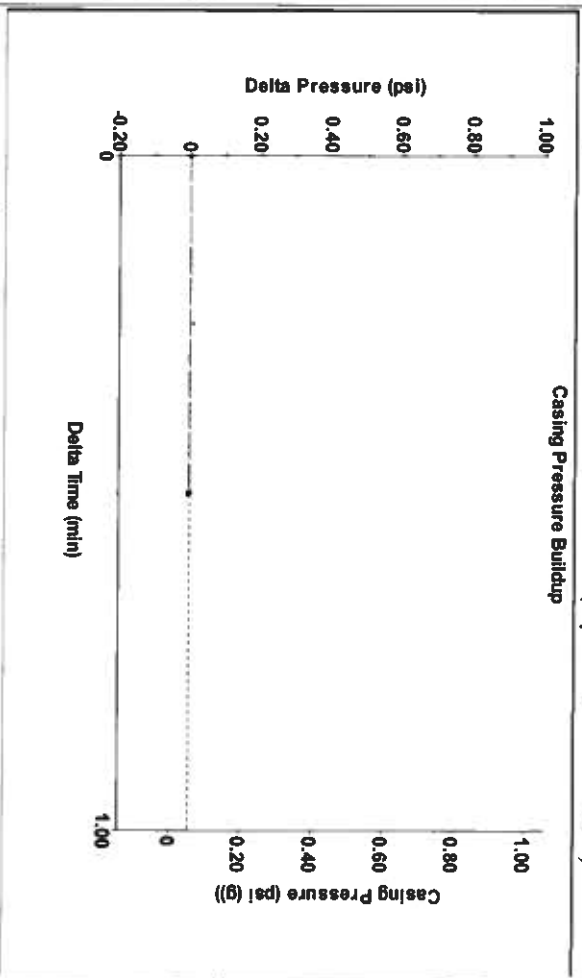
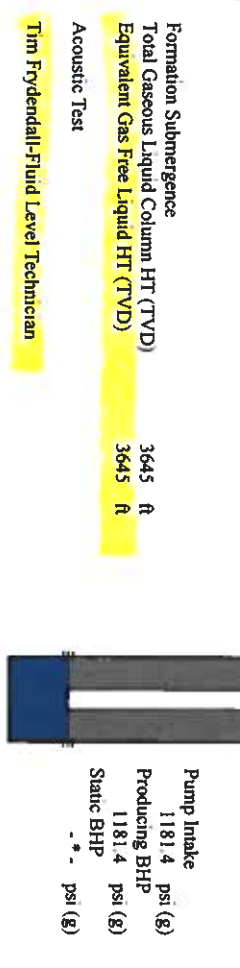


Filter Type: High Pass
 Manual Acoustic Velok: 030.89 ft/s
 Automatic Collar Count: Yes
 Manual JTS/sec: 16.2602
 Time: 3.999 sec
 Joints: 65.8814 Jts
 Depth: 2088.44 ft

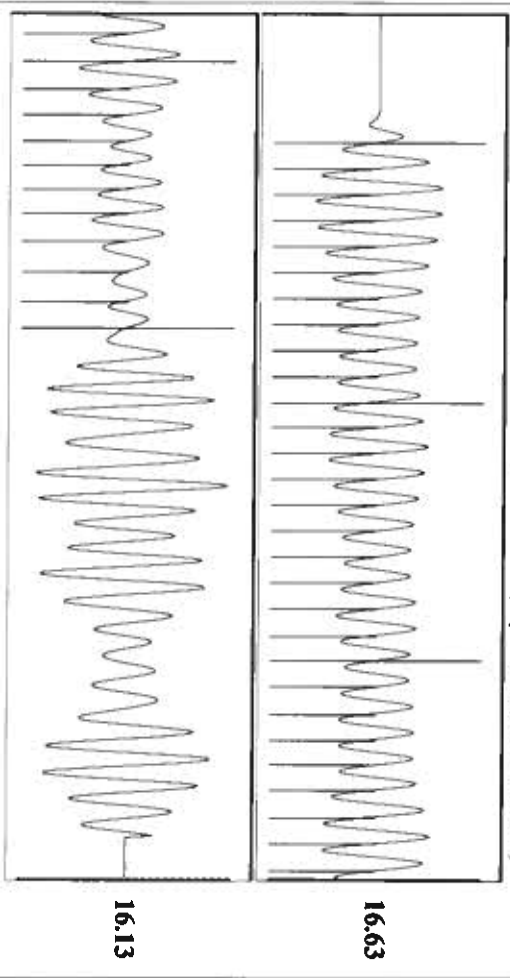


Analysis Method: Automatic

Production	Potential	Casing Pressure	Producing
Oil: -	BBL/D	0.1 psi (g)	Annular
Water: -	BBL/D	Casing Pressure Buildup	Gas Flow
Gas: -	Mscf/D	-0.002 psi	% Liquid
IPR Method: PBHP/SBHP	Vogel	0.50 min	0 Mscf/D
Production Efficiency: 0.0		Gas/Liquid Interface Pressure: 1.1 psi (g)	100 %
Oil: 40 deg API		Liquid Level Depth: 2088.44 ft	
Water: 1.05 Sp.Gr.H2O		Pump Intake Depth: 5733.00 ft	
Gas: 0.93 Sp.Gr.AIR		Formation Depth: 5733.00 ft	
Acoustic Velocity: 1044.48 ft/s			



Change in Pressure: -0.00 psi
 Change in Time: 0.50 min
 PTV9222 Range
 0 - ? psi



Acoustic Velocity	Joints Per Second	Depth to liquid level	Automatic Collar Count	Joints counted	Joints to liquid level	Filter Width	Time to 1st Collar
1044.48 ft/s	16.4745 Jts/sec	2088.44 ft	Yes	40	65.8814	14.2602	18.2602
						0.296	2.724

July 07, 2020

Katherine McClurkan
Merit Energy Company, LLC
13727 Noel Road, Suite 1200
Dallas, TX 75240-7362

Re: Temporary Abandonment
API 15-187-21093-00-00
Williams 2-L21-29-39
SW/4 Sec.21-29S-39W
Stanton County, Kansas

Dear Katherine McClurkan:

"Your temporary abandonment (TA) application for the well listed above has been approved. In accordance with K.A.R. 82-3-111 the TA status of this well will expire 07/07/2021.

- * If you return this well to service or plug it, please notify the District Office.
- * If you sell this well you are required to file a Transfer of Operator form, T-1.
- * If the well will remain temporarily abandoned, you must submit a new TA application, CP-111, before 07/07/2021.

You may contact me at the number above if you have questions.

Very truly yours,

Michael Maier"