

KANSAS CORPORATION COMMISSION
OIL & GAS CONSERVATION DIVISION

TEMPORARY ABANDONMENT WELL APPLICATION

OPERATOR: License#
Name:
Address 1:
Address 2:
City: State: Zip:
Contact Person:
Phone:
Contact Person Email:
Field Contact Person:
Field Contact Person Phone:

API No. 15-
Spot Description:
Sec. Twp. S. R.
GPS Location: Lat: Long:
Datum: NAD27 NAD83 WGS84
County: Elevation:
Lease Name: Well #:
Well Type: Oil Gas OG WSW Other:
SWD Permit #: ENHR Permit #:
Gas Storage Permit #:
Spud Date: Date Shut-In:

Table with 7 columns: Conductor, Surface, Production, Intermediate, Liner, Tubing. Rows include Size, Setting Depth, Amount of Cement, Top of Cement, Bottom of Cement.

Casing Fluid Level from Surface: How Determined? Date:
Casing Squeeze(s): to w / sacks of cement, to w / sacks of cement. Date:
Do you have a valid Oil & Gas Lease? Yes No
Depth and Type: Junk in Hole at Tools in Hole at Casing Leaks: Yes No Depth of casing leak(s):
Type Completion: ALT. I ALT. II Depth of: DV Tool: w / sacks of cement Port Collar: w / sack of cement
Packer Type: Size: Inch Set at: Feet
Total Depth: Plug Back Depth: Plug Back Method:

Geological Date:

Table with 4 columns: Formation Name, Formation Top, Formation Base, Completion Information. Rows 1 and 2.

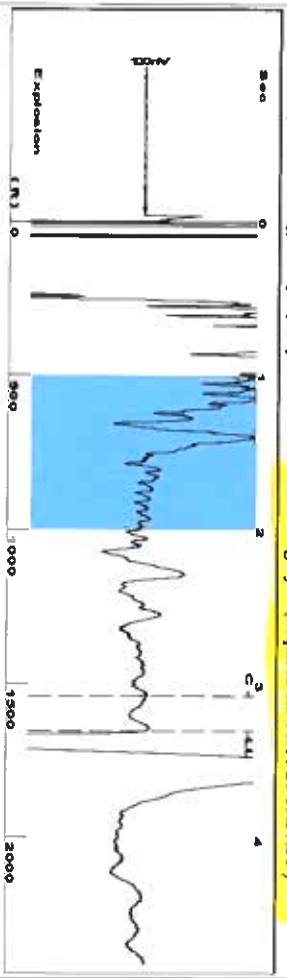
UNDER PENALTY OF PERJURY I HEREBY ATTEST THAT THE INFORMATION CONTAINED HEREIN IS TRUE AND CORRECT TO THE BEST OF MY KNOWLEDGE

Submitted Electronically

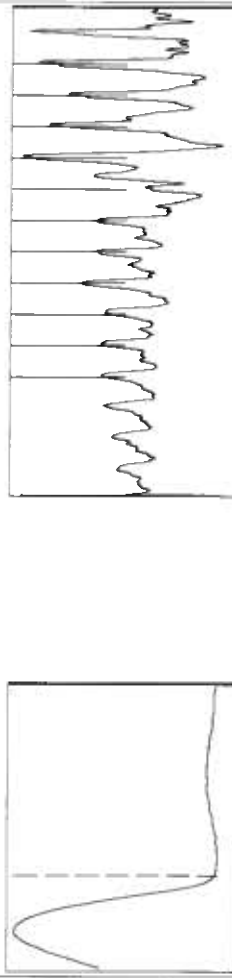
Do NOT Write in This Space - KCC USE ONLY
Date Tested: Results: Date Plugged: Date Repaired: Date Put Back in Service:
Review Completed by: Comments:
TA Approved: Yes Denied Date:

Mail to the Appropriate KCC Conservation Office:

Table with 3 columns: District Office, Address, Phone. Rows for District Office #1, #2, #3, #4.



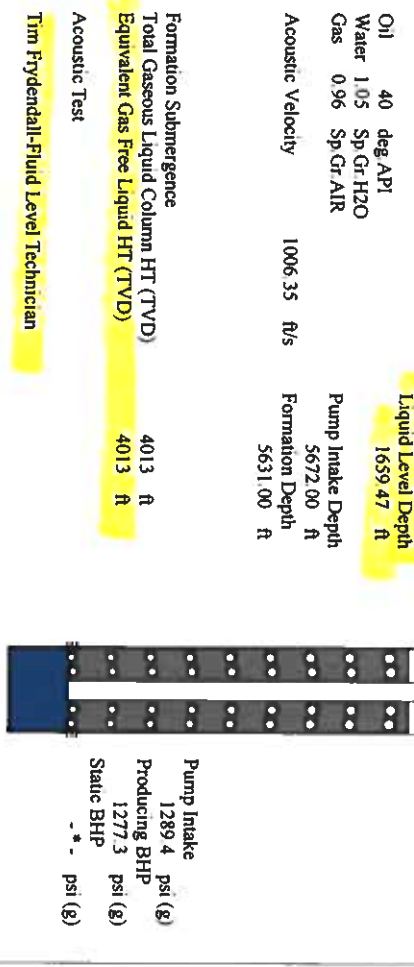
Filter Type: High Pass
 Manual Acoustic Velocity: 539 ft/s
 Automatic Collar Count: Yes
 Manual JTS/sec: 15.5763
 Time: 3.298 sec
 Joints: 52.3492 Jts
 Depth: 1659.47 ft



Analysis Method: Automatic

Group: Merit Energy Company-Ulysses Well: Shonn Gregory 1 (acquired on 06/11/20 09:57:50)

Production	Current	Potential	Casing Pressure	-0.1 psi (g)	Producing	Annular	0 Mscf/D
Oil	-*-	-*-	Casing Pressure Buildup	0.003 psi	% Liquid	Gas Flow	0 Mscf/D
Water	-*-	-*-				% Liquid	100 %
Gas	-*-	-*-					
IPR Method	PBHP/SBHP	Vogel	Gas/Liquid Interface Pressure	0.50 min			
Production Efficiency	0.0						
			Liquid Level Depth	1659.47 ft			
Oil	40 deg API						
Water	1.05 Sp Gr H2O						
Gas	0.96 Sp Gr AIR						
Acoustic Velocity	1006.35 ft/s						
			Pump Intake Depth	5672.00 ft			
			Formation Depth	5631.00 ft			

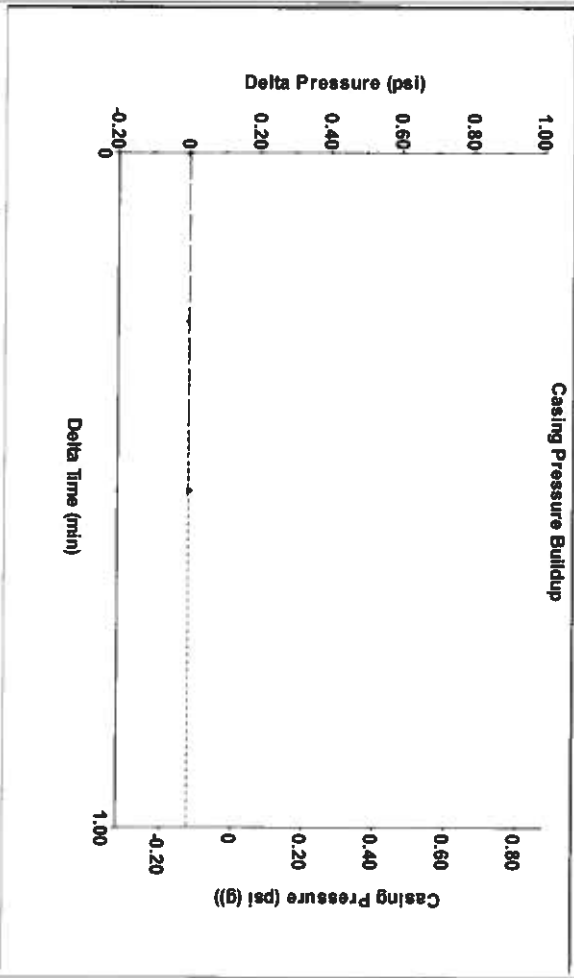


Formation Submergence
 Total Gaseous Liquid Column HT (TVL)
 Equivalent Gas Free Liquid HT (TVL)

4013 ft
 4013 ft

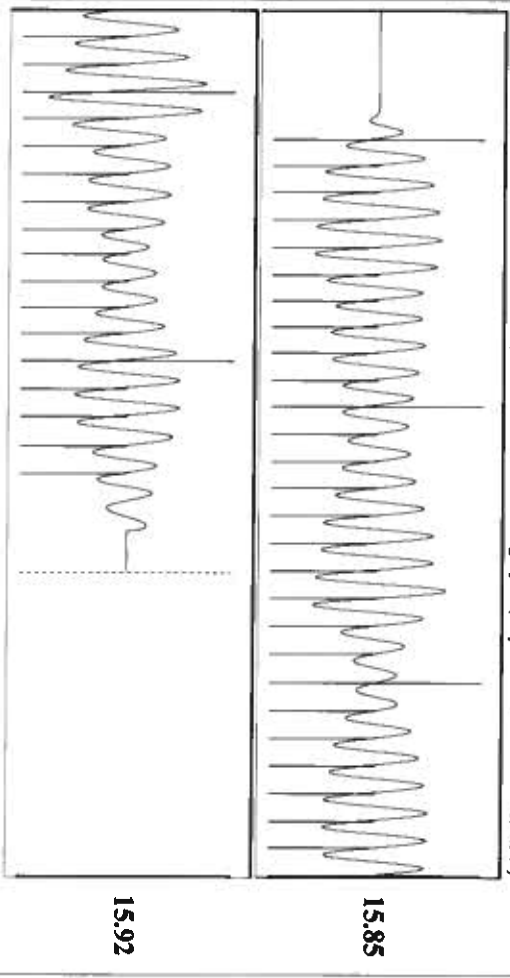
Acoustic Test

Tim Frydendall-Fluid Level Technician



Change in Pressure: 0.00 psi
 Change in Time: 0.50 min
 PT9522
 Range: 0 - 2 psi

Group: Merit Energy Company-Ulysses Well: Shonn Gregory 1 (acquired on 06/11/20 09:57:50)



Acoustic Velocity	1006.35 ft/s	Joints counted	44
Joints Per Second	15.873 Jts/sec	Joints to liquid level	52.3492
Depth to liquid level	1659.47 ft	Filter Width	13.5763
Automatic Collar Count	Yes	Time to 1st Collar	0.296

July 07, 2020

Katherine McClurkan
Merit Energy Company, LLC
13727 Noel Road, Suite 1200
Dallas, TX 75240-7362

Re: Temporary Abandonment
API 15-187-20809-00-00
Shonn Gregory 1-35
NW/4 Sec.35-29S-40W
Stanton County, Kansas

Dear Katherine McClurkan:

"Your temporary abandonment (TA) application for the well listed above has been approved. In accordance with K.A.R. 82-3-111 the TA status of this well will expire 07/07/2021.

- * If you return this well to service or plug it, please notify the District Office.
- * If you sell this well you are required to file a Transfer of Operator form, T-1.
- * If the well will remain temporarily abandoned, you must submit a new TA application, CP-111, before 07/07/2021.

You may contact me at the number above if you have questions.

Very truly yours,

Michael Maier"