

KANSAS CORPORATION COMMISSION  
OIL & GAS CONSERVATION DIVISION

TEMPORARY ABANDONMENT WELL APPLICATION

All blanks must be complete

OPERATOR: License# \_\_\_\_\_  
 Name: \_\_\_\_\_  
 Address 1: \_\_\_\_\_  
 Address 2: \_\_\_\_\_  
 City: \_\_\_\_\_ State: \_\_\_\_\_ Zip: \_\_\_\_\_ + \_\_\_\_\_  
 Contact Person: \_\_\_\_\_  
 Phone: ( \_\_\_\_\_ ) \_\_\_\_\_  
 Contact Person Email: \_\_\_\_\_  
 Field Contact Person: \_\_\_\_\_  
 Field Contact Person Phone: ( \_\_\_\_\_ ) \_\_\_\_\_

API No. 15- \_\_\_\_\_  
 Spot Description: \_\_\_\_\_  
 \_\_\_\_\_ - \_\_\_\_\_ - \_\_\_\_\_ - \_\_\_\_\_ Sec. \_\_\_\_\_ Twp. \_\_\_\_\_ S. R. \_\_\_\_\_  E  W  
 \_\_\_\_\_ feet from  N /  S Line of Section  
 \_\_\_\_\_ feet from  E /  W Line of Section  
 GPS Location: Lat: \_\_\_\_\_, Long: \_\_\_\_\_  
(e.g. xx.xxxxx) (e.g. -xxx.xxxxx)  
 Datum:  NAD27  NAD83  WGS84  
 County: \_\_\_\_\_ Elevation: \_\_\_\_\_  GL  KB  
 Lease Name: \_\_\_\_\_ Well #: \_\_\_\_\_  
 Well Type: (check one)  Oil  Gas  OG  WSW  Other: \_\_\_\_\_  
 SWD Permit #: \_\_\_\_\_  ENHR Permit #: \_\_\_\_\_  
 Gas Storage Permit #: \_\_\_\_\_  
 Spud Date: \_\_\_\_\_ Date Shut-In: \_\_\_\_\_

	Conductor	Surface	Production	Intermediate	Liner	Tubing
Size						
Setting Depth						
Amount of Cement						
Top of Cement						
Bottom of Cement						

Casing Fluid Level from Surface: \_\_\_\_\_ How Determined? \_\_\_\_\_ Date: \_\_\_\_\_  
 Casing Squeeze(s): \_\_\_\_\_ to \_\_\_\_\_ w / \_\_\_\_\_ sacks of cement, \_\_\_\_\_ to \_\_\_\_\_ w / \_\_\_\_\_ sacks of cement. Date: \_\_\_\_\_  
(top) (bottom) (top) (bottom)  
 Do you have a valid Oil & Gas Lease?  Yes  No  
 Depth and Type:  Junk in Hole at \_\_\_\_\_  Tools in Hole at \_\_\_\_\_ Casing Leaks:  Yes  No Depth of casing leak(s): \_\_\_\_\_  
(depth) (depth)  
 Type Completion:  ALT. I  ALT. II Depth of:  DV Tool: \_\_\_\_\_ w / \_\_\_\_\_ sacks of cement  Port Collar: \_\_\_\_\_ w / \_\_\_\_\_ sack of cement  
(depth) (depth)  
 Packer Type: \_\_\_\_\_ Size: \_\_\_\_\_ Inch Set at: \_\_\_\_\_ Feet  
 Total Depth: \_\_\_\_\_ Plug Back Depth: \_\_\_\_\_ Plug Back Method: \_\_\_\_\_

**Geological Data:**

Formation Name	Formation Top	Formation Base	Completion Information
1. _____	At: _____	to _____ Feet	Perforation Interval _____ to _____ Feet or Open Hole Interval _____ to _____ Feet
2. _____	At: _____	to _____ Feet	Perforation Interval _____ to _____ Feet or Open Hole Interval _____ to _____ Feet

UNDER PENALTY OF PERJURY I HEREBY ATTEST THAT THE INFORMATION CONTAINED HEREIN IS TRUE AND CORRECT TO THE BEST OF MY KNOWLEDGE

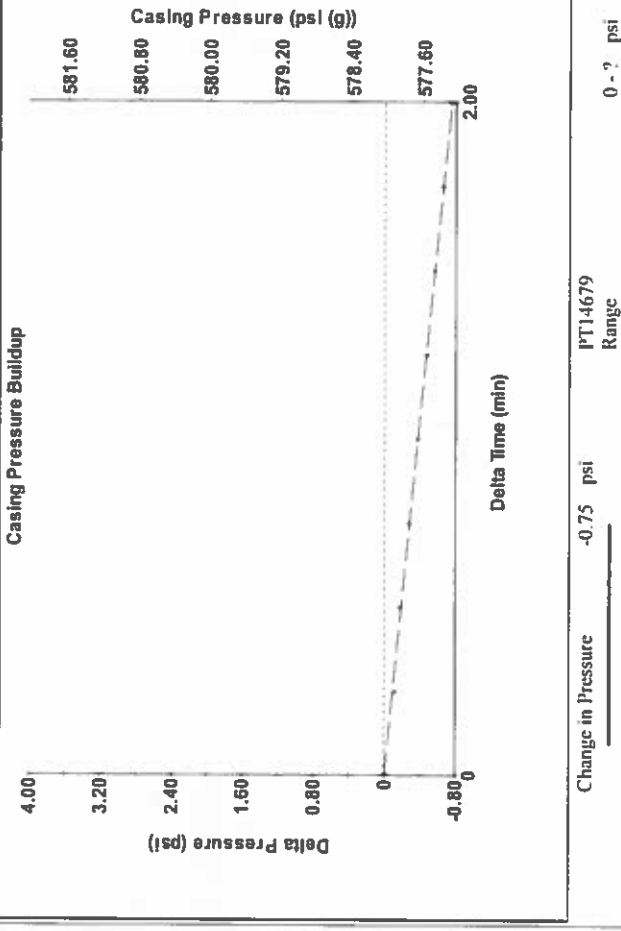
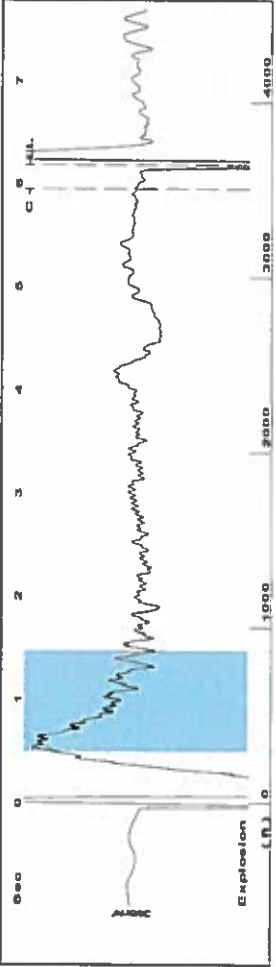
Submitted Electronically

<b>Do NOT Write in This Space - KCC USE ONLY</b>	Date Tested: _____	Results: _____	Date Plugged: _____	Date Repaired: _____	Date Put Back in Service: _____
	Review Completed by: _____ Comments: _____				
TA Approved: <input type="checkbox"/> Yes <input type="checkbox"/> Denied Date: _____					

Mail to the Appropriate KCC Conservation Office:

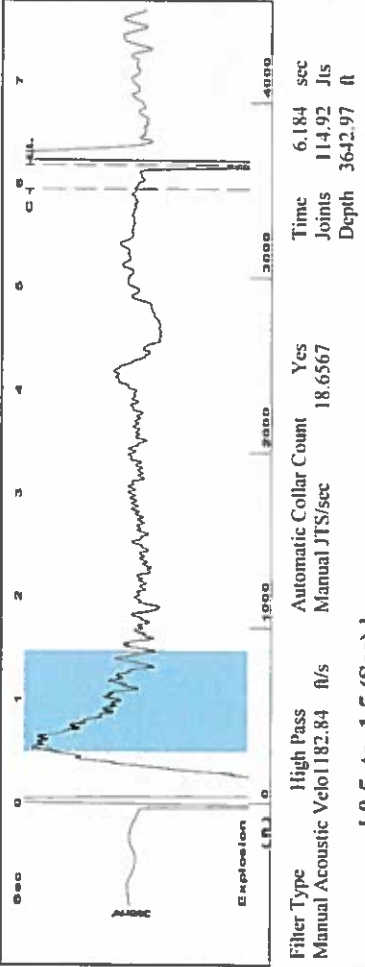
	KCC District Office #1 - 210 E. Frontview, Suite A, Dodge City, KS 67801	Phone 620.682.7933
	KCC District Office #2 - 3450 N. Rock Road, Building 600, Suite 601, Wichita, KS 67226	Phone 316.337.7400
	KCC District Office #3 - 137 E. 21st St., Chanute, KS 66720	Phone 620.902.6450
	KCC District Office #4 - 2301 E. 13th Street, Hays, KS 67601-2651	Phone 785.261.6250

Group: SUBLETTE Well: Hoffman 3 (acquired on: 06/24/20 09:46:17)



Change in Pressure -0.75 psi PT14679 Range  
 Change in Time 2.00 min

Group: SUBLETTE Well: Hoffman 3 (acquired on: 06/24/20 09:46:17)



Filter Type **High Pass** Automatic Collar Count **Yes** Time **6.184** sec  
 Manual Acoustic Velocity **1182.84** ft/s Manual JTS/sec **18.6567** Joints **114.92** Jts  
 Depth **3642.97** ft



Analysis Method: Automatic

Group: SUBLETTE Well: Hoffman 3 (acquired on: 06/24/20 09:46:17)

Production	Potential	Casing Pressure	Producing
Oil <b>-*-</b>	<b>BBL/D</b>	<b>578.0</b> psi (g)	Annular
Water <b>-*-</b>	<b>BBL/D</b>	<b>-0.754</b> psi	Gas Flow
Gas <b>-*-</b>	<b>Mscf/D</b>	<b>2.00</b> min	% Liquid
IPR Method	Vogel	Gas/Liquid Interface Pressure	<b>0</b> Mscf/D
PBHP/SBHP	<b>-*-</b>	<b>642.0</b> psi (g)	<b>100</b> %
Production Efficiency	<b>0.0</b>	Liquid Level Depth	Pump Intake
Oil <b>40</b> deg API		<b>3642.97</b> ft	<b>1123.3</b> psi (g)
Water <b>1.05</b> Sp.Gr.H2O		Pump Intake Depth	Producing BHHP
Gas <b>0.74</b> Sp.Gr.AIR		<b>5174.00</b> ft	<b>990.2</b> psi (g)
Acoustic Velocity	<b>1178.19</b> ft/s	Formation Depth	Static BHHP
		<b>4742.00</b> ft	<b>-*-</b> psi (g)
Formation Submergence			
Total Gaseous Liquid Column HIT (TVD)	<b>1531</b> ft		
Equivalent Gas Free Liquid HIT (TVD)	<b>1531</b> ft		
6/24/2020			

Group: SUBLETTE Well: Hoffman 3 (acquired on: 06/24/20 09:46:17)

Acoustic Velocity	<b>1178.19</b> ft/s	Joints counted	<b>106</b>
Joints Per Second	<b>18.5835</b> jts/sec	Joints to liquid level	<b>114.92</b>
Depth to liquid level	<b>3642.97</b> ft	Filter Width	<b>16.6567</b>
Automatic Collar Count	<b>Yes</b>	Time to 1st Collar	<b>0.248</b>
			<b>5.952</b>

July 07, 2020

Katherine McClurkan  
Merit Energy Company, LLC  
13727 Noel Road, Suite 1200  
Dallas, TX 75240-7362

Re: Temporary Abandonment  
API 15-081-21668-00-01  
Hoffman 3-O19-30-32  
SE/4 Sec.19-30S-32W  
Haskell County, Kansas

Dear Katherine McClurkan:

"Your temporary abandonment (TA) application for the well listed above has been approved. In accordance with K.A.R. 82-3-111 the TA status of this well will expire 07/07/2021.

- \* If you return this well to service or plug it, please notify the District Office.
- \* If you sell this well you are required to file a Transfer of Operator form, T-1.
- \* If the well will remain temporarily abandoned, you must submit a new TA application, CP-111, before 07/07/2021.

You may contact me at the number above if you have questions.

Very truly yours,

Michael Maier"