

KANSAS CORPORATION COMMISSION  
OIL & GAS CONSERVATION DIVISION

TEMPORARY ABANDONMENT WELL APPLICATION

OPERATOR: License# \_\_\_\_\_  
 Name: \_\_\_\_\_  
 Address 1: \_\_\_\_\_  
 Address 2: \_\_\_\_\_  
 City: \_\_\_\_\_ State: \_\_\_\_\_ Zip: \_\_\_\_\_ + \_\_\_\_\_  
 Contact Person: \_\_\_\_\_  
 Phone: ( \_\_\_\_\_ ) \_\_\_\_\_  
 Contact Person Email: \_\_\_\_\_  
 Field Contact Person: \_\_\_\_\_  
 Field Contact Person Phone: ( \_\_\_\_\_ ) \_\_\_\_\_

API No. 15- \_\_\_\_\_  
 Spot Description: \_\_\_\_\_  
 \_\_\_\_\_ - \_\_\_\_\_ - \_\_\_\_\_ - \_\_\_\_\_ Sec. \_\_\_\_\_ Twp. \_\_\_\_\_ S. R. \_\_\_\_\_  E  W  
 \_\_\_\_\_ feet from  N /  S Line of Section  
 \_\_\_\_\_ feet from  E /  W Line of Section  
 GPS Location: Lat: \_\_\_\_\_, Long: \_\_\_\_\_  
(e.g. xx.xxxxx) (e.g. -xxx.xxxxx)  
 Datum:  NAD27  NAD83  WGS84  
 County: \_\_\_\_\_ Elevation: \_\_\_\_\_  GL  KB  
 Lease Name: \_\_\_\_\_ Well #: \_\_\_\_\_  
 Well Type: (check one)  Oil  Gas  OG  WSW  Other: \_\_\_\_\_  
 SWD Permit #: \_\_\_\_\_  ENHR Permit #: \_\_\_\_\_  
 Gas Storage Permit #: \_\_\_\_\_  
 Spud Date: \_\_\_\_\_ Date Shut-In: \_\_\_\_\_

|                  | Conductor | Surface | Production | Intermediate | Liner | Tubing |
|------------------|-----------|---------|------------|--------------|-------|--------|
| Size             |           |         |            |              |       |        |
| Setting Depth    |           |         |            |              |       |        |
| Amount of Cement |           |         |            |              |       |        |
| Top of Cement    |           |         |            |              |       |        |
| Bottom of Cement |           |         |            |              |       |        |

Casing Fluid Level from Surface: \_\_\_\_\_ How Determined? \_\_\_\_\_ Date: \_\_\_\_\_  
 Casing Squeeze(s): \_\_\_\_\_ to \_\_\_\_\_ w / \_\_\_\_\_ sacks of cement, \_\_\_\_\_ to \_\_\_\_\_ w / \_\_\_\_\_ sacks of cement. Date: \_\_\_\_\_  
(top) (bottom) (top) (bottom)  
 Do you have a valid Oil & Gas Lease?  Yes  No  
 Depth and Type:  Junk in Hole at \_\_\_\_\_  Tools in Hole at \_\_\_\_\_ Casing Leaks:  Yes  No Depth of casing leak(s): \_\_\_\_\_  
(depth) (depth)  
 Type Completion:  ALT. I  ALT. II Depth of:  DV Tool: \_\_\_\_\_ w / \_\_\_\_\_ sacks of cement  Port Collar: \_\_\_\_\_ w / \_\_\_\_\_ sack of cement  
(depth) (depth)  
 Packer Type: \_\_\_\_\_ Size: \_\_\_\_\_ Inch Set at: \_\_\_\_\_ Feet  
 Total Depth: \_\_\_\_\_ Plug Back Depth: \_\_\_\_\_ Plug Back Method: \_\_\_\_\_

**Geological Data:**

| Formation Name | Formation Top | Formation Base | Completion Information                                                             |
|----------------|---------------|----------------|------------------------------------------------------------------------------------|
| 1. _____       | At: _____     | to _____ Feet  | Perforation Interval _____ to _____ Feet or Open Hole Interval _____ to _____ Feet |
| 2. _____       | At: _____     | to _____ Feet  | Perforation Interval _____ to _____ Feet or Open Hole Interval _____ to _____ Feet |

UNDER PENALTY OF PERJURY I HEREBY ATTEST THAT THE INFORMATION CONTAINED HEREIN IS TRUE AND CORRECT TO THE BEST OF MY KNOWLEDGE

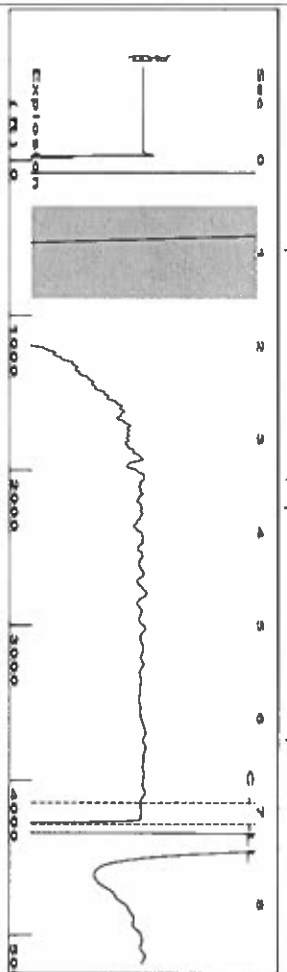
Submitted Electronically

|                                                                                       |                                            |                |                     |                      |                                 |
|---------------------------------------------------------------------------------------|--------------------------------------------|----------------|---------------------|----------------------|---------------------------------|
| <b>Do NOT Write in This Space - KCC USE ONLY</b>                                      | Date Tested: _____                         | Results: _____ | Date Plugged: _____ | Date Repaired: _____ | Date Put Back in Service: _____ |
|                                                                                       | Review Completed by: _____ Comments: _____ |                |                     |                      |                                 |
| TA Approved: <input type="checkbox"/> Yes <input type="checkbox"/> Denied Date: _____ |                                            |                |                     |                      |                                 |

Mail to the Appropriate KCC Conservation Office:

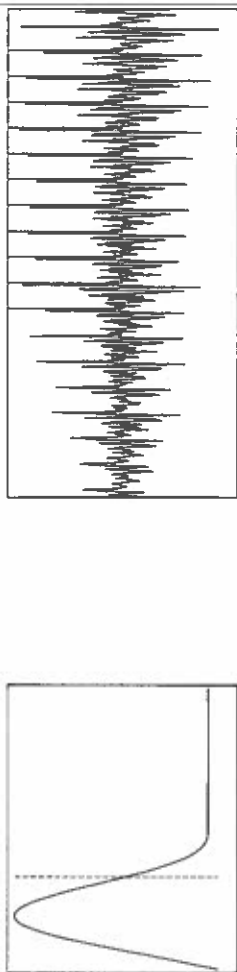
|                                                                                    |                                                                                        |                    |
|------------------------------------------------------------------------------------|----------------------------------------------------------------------------------------|--------------------|
|  | KCC District Office #1 - 210 E. Frontview, Suite A, Dodge City, KS 67801               | Phone 620.682.7933 |
|                                                                                    | KCC District Office #2 - 3450 N. Rock Road, Building 600, Suite 601, Wichita, KS 67226 | Phone 316.337.7400 |
|                                                                                    | KCC District Office #3 - 137 E. 21st St., Chanute, KS 66720                            | Phone 620.902.6450 |
|                                                                                    | KCC District Office #4 - 2301 E. 13th Street, Hays, KS 67601-2651                      | Phone 785.261.6250 |

Group: TAD Well: atkins m-2 (acquired on: 07/09/20 11:26:11)



Filter Type: High Pass  
Manual Acoustic Velocity: 196.23 f/s  
Automatic Collar Count: 18,8679  
Time: 7.132 sec  
Joints: 135,092 Jts  
Depth: 4282.42 ft

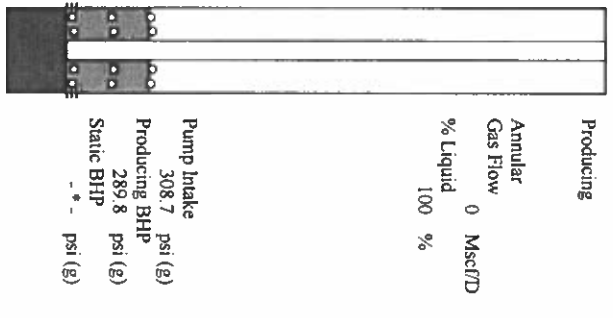
[ 0.5 to 1.5 (Sec) ]



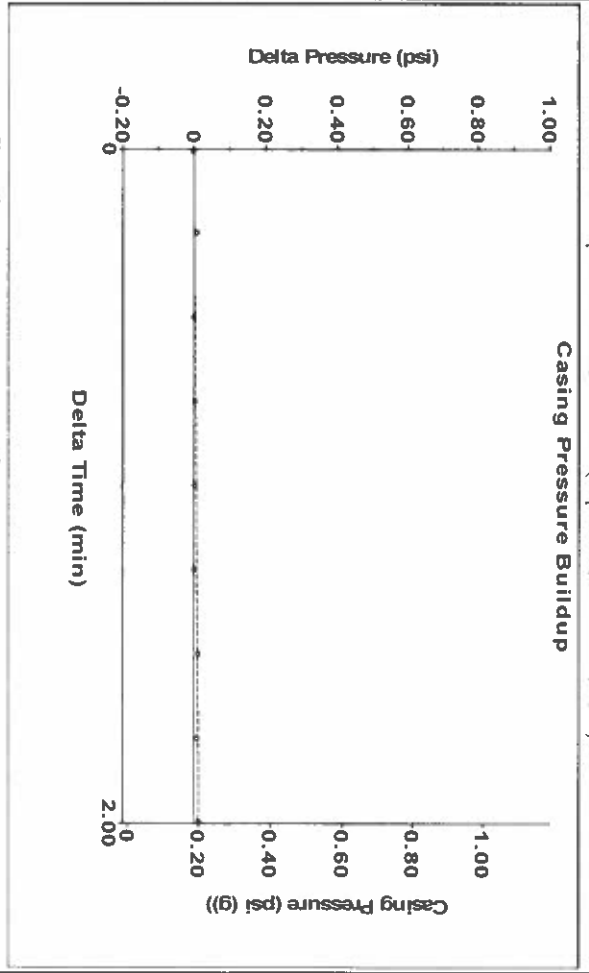
Analysis Method: Automatic

Group: TAD Well: atkins m-2 (acquired on: 07/09/20 11:26:11)

| Production                           | Current        | Potential | Casing Pressure               | Producing |
|--------------------------------------|----------------|-----------|-------------------------------|-----------|
| Oil                                  | -*-            | -*-       | 0.2 psi (g)                   | Annular   |
| Water                                | -*-            | -*-       | Casing Pressure Buildup       | Gas Flow  |
| Gas                                  | -*-            | -*-       | 0.0 psi                       | % Liquid  |
|                                      |                |           | 2.00 min                      | 0 Mscf/D  |
| IPR Method                           |                | Vogel     | Gas/Liquid Interface Pressure |           |
| PBHP/SBHP                            |                | -*-       | 2.0 psi (g)                   |           |
| Production Efficiency                |                | 0.0       |                               |           |
|                                      |                |           | Liquid Level Depth            |           |
| Oil                                  | 40 deg API     |           | 4282.42 ft                    |           |
| Water                                | 1.05 Sp.Gr.H2O |           |                               |           |
| Gas                                  | 0.80 Sp.Gr.AIR |           | Pump Intake Depth             |           |
|                                      |                |           | 5191.00 ft                    |           |
| Acoustic Velocity                    | 1200.9 ft/s    |           | Formation Depth               |           |
|                                      |                |           | 5134.00 ft                    |           |
| Formation Submergence                |                |           |                               |           |
| Total Gaseous Liquid Column HT (TVD) |                |           |                               |           |
| Equivalent Gas Free Liquid HT (TVD)  |                |           |                               |           |
| Acoustic Test                        |                |           |                               |           |

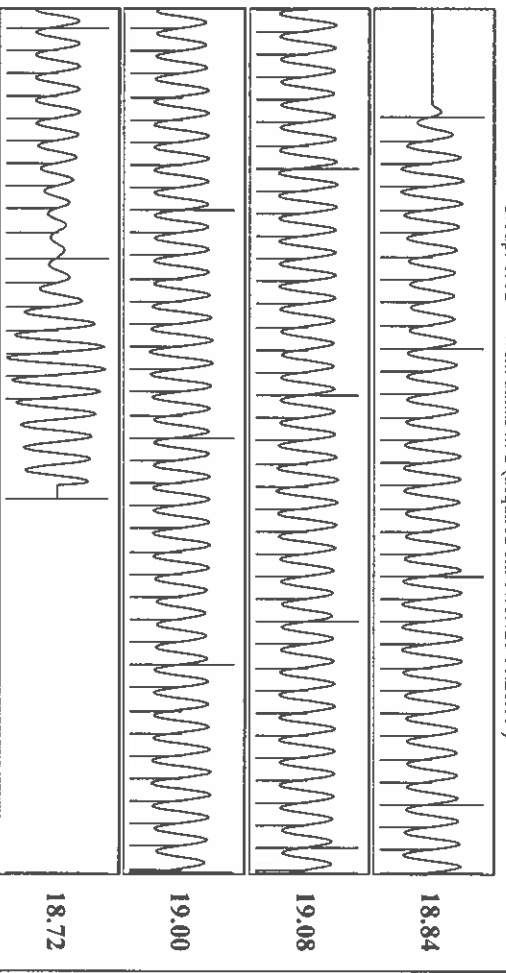


Group: TAD Well: atkins m-2 (acquired on: 07/09/20 11:26:11)



Change in Pressure: 0.01 psi  
Change in Time: 2.00 min  
PT 6902  
Range

Group: TAD Well: atkins m-2 (acquired on: 07/09/20 11:26:11)



Acoustic Velocity: 1200.9 ft/s  
Joints Per Second: 18,9417 Jts/sec  
Depth to liquid level: 4282.42 ft  
Automatic Collar Count: Yes

Joints counted: 126  
Joints to liquid level: 135,092  
Filter Width: 16,8679  
Time to 1st Collar: 0.248

July 14, 2020

Katherine McClurkan  
Merit Energy Company, LLC  
13727 Noel Road, Suite 1200  
Dallas, TX 75240

Re: Temporary Abandonment  
API 15-081-21366-00-00  
Atkins M 2  
NW/4 Sec.17-27S-33W  
Haskell County, Kansas

Dear Katherine McClurkan:

"Your temporary abandonment (TA) application for the well listed above has been approved. In accordance with K.A.R. 82-3-111 the TA status of this well will expire 07/14/2021.

- \* If you return this well to service or plug it, please notify the District Office.
- \* If you sell this well you are required to file a Transfer of Operator form, T-1.
- \* If the well will remain temporarily abandoned, you must submit a new TA application, CP-111, before 07/14/2021.

You may contact me at the number above if you have questions.

Very truly yours,

Michael Maier"