

KANSAS CORPORATION COMMISSION
OIL & GAS CONSERVATION DIVISION

TEMPORARY ABANDONMENT WELL APPLICATION

OPERATOR: License#
Name:
Address 1:
Address 2:
City: State: Zip:
Contact Person:
Phone:
Contact Person Email:
Field Contact Person:
Field Contact Person Phone:

API No. 15-
Spot Description:
Sec. Twp. S. R.
GPS Location: Lat, Long
Datum: NAD27, NAD83, WGS84
County: Elevation:
Lease Name: Well #:
Well Type: Oil, Gas, OG, WSW, Other
SWD Permit #: ENHR Permit #:
Gas Storage Permit #:
Spud Date: Date Shut-In:

Table with 7 columns: Conductor, Surface, Production, Intermediate, Liner, Tubing. Rows include Size, Setting Depth, Amount of Cement, Top of Cement, Bottom of Cement.

Casing Fluid Level from Surface: How Determined? Date:
Casing Squeeze(s): to w / sacks of cement, to w / sacks of cement. Date:
Do you have a valid Oil & Gas Lease? Yes No
Depth and Type: Junk in Hole at Tools in Hole at Casing Leaks: Yes No Depth of casing leak(s):
Type Completion: ALT. I ALT. II Depth of: DV Tool: w / sacks of cement Port Collar: w / sack of cement
Packer Type: Size: Inch Set at: Feet
Total Depth: Plug Back Depth: Plug Back Method:

Geological Date:

Table with 4 columns: Formation Name, Formation Top, Formation Base, Completion Information. Rows 1 and 2.

UNDER PENALTY OF PERJURY I HEREBY ATTEST THAT THE INFORMATION CONTAINED HEREIN IS TRUE AND CORRECT TO THE BEST OF MY KNOWLEDGE

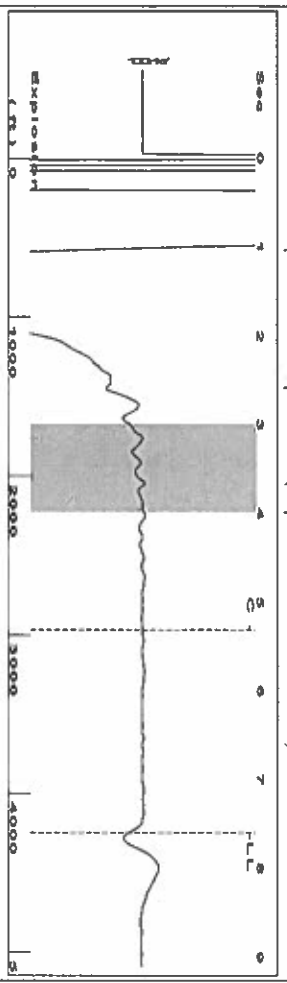
Submitted Electronically

Do NOT Write in This Space - KCC USE ONLY
Date Tested: Results: Date Plugged: Date Repaired: Date Put Back in Service:
Review Completed by: Comments:
TA Approved: Yes Denied Date:

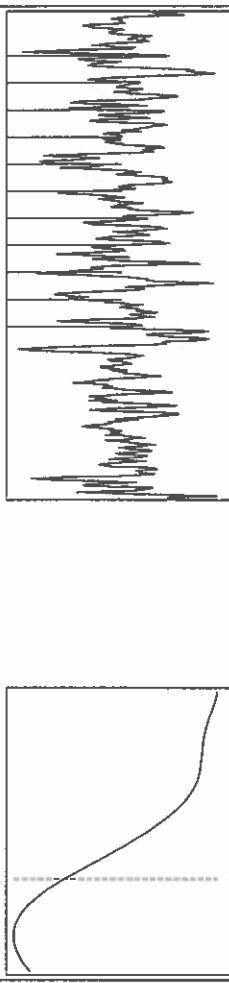
Mail to the Appropriate KCC Conservation Office:

Map of Kansas with 4 numbered districts. Table with 3 columns: District Office Name, Address, Phone.

Group: TAVD Well: petz 1-531 (acquired on: 07/09/20 10:13:22)



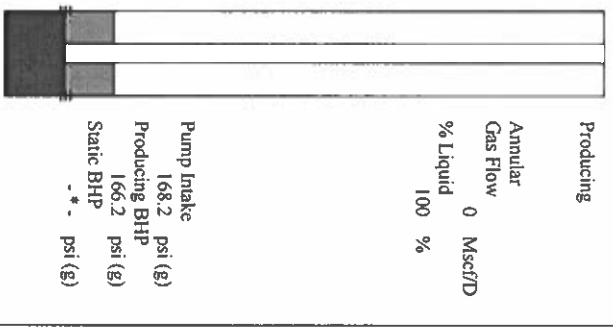
Filter Type High Pass Automatic Collar Count Yes
 Manual Acoustic Veloc 1140 29 Manual JTS/sec 17 9856
 Time 7.594 sec
 Joints 133 994 JIS
 Depth 4247.61 ft



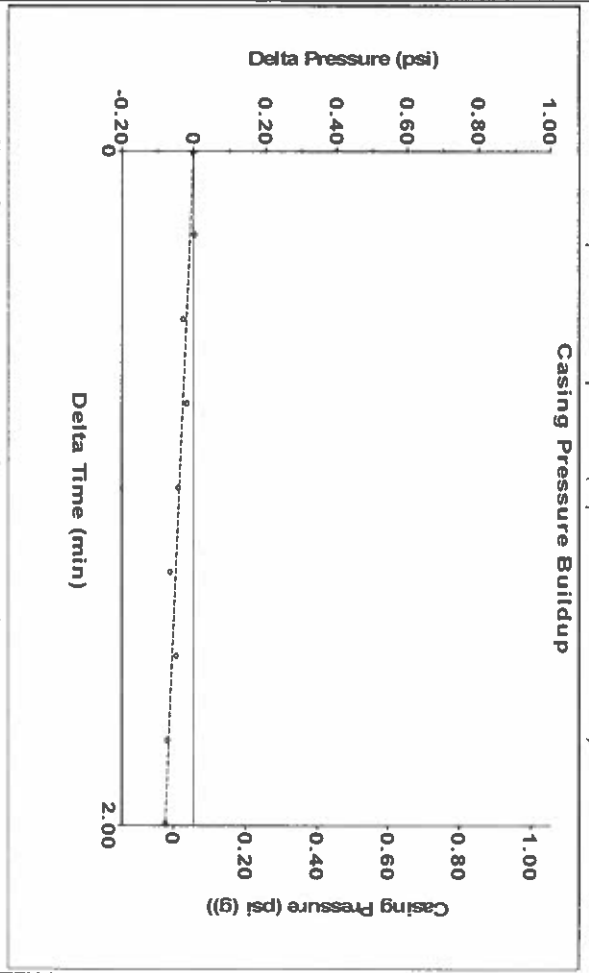
Analysis Method: Automatic

Group: TAVD Well: petz 1-531 (acquired on: 07/09/20 10:13:22)

Production	Potential	Casing Pressure	Producing
Oil Current	-*- BBL/D	0.1 psi (g)	Annular
Water	-*- BBL/D	-0.1 psi	Gas Flow
Gas	-*- Mscf/D	2.00 min	% Liquid
IPR Method	Vogel	Gas/Liquid Interface Pressure	0 Mscf/D
PBHP/SBHP	-*-	2.0 psi (g)	% Liquid
Production Efficiency	0.0	Liquid Level Depth	100 %
Oil	40 deg/API	4247.61 ft	
Water	1.05 Sp.Gr./H2O	Pump Intake Depth	
Gas	0.88 Sp.Gr./AIR	4736.00 ft	
Acoustic Velocity	1118.68 ft/s	Formation Depth	
		4730.00 ft	
Formation Submergence			
Total Gaseous Liquid Column HT (TVD)			
Equivalent Gas Free Liquid HT (TVD)			
Acoustic Test			

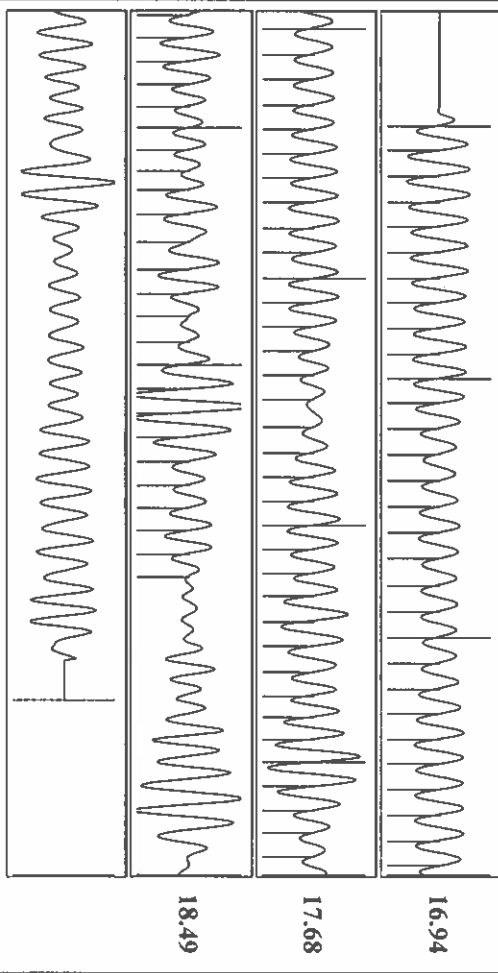


Group: TAVD Well: petz 1-531 (acquired on: 07/09/20 10:13:22)



Change in Pressure -0.08 psi PT 6902
 Change in Time 2.00 min Range

Group: TAVD Well: petz 1-531 (acquired on: 07/09/20 10:13:22)



Acoustic Velocity 1118.68 ft/s Joints counted 89
 Joints Per Second 17.6447 JIS/sec Joints to liquid level 133 994
 Depth to liquid level 4247.61 ft Filter Width 15.9856
 Automatic Collar Count Yes Time to 1st Collar 0.264 5.308

July 14, 2020

Katherine McClurkan
Merit Energy Company, LLC
13727 Noel Road, Suite 1200
Dallas, TX 75240

Re: Temporary Abandonment
API 15-055-21799-00-00
Pettz 1-531
NW/4 Sec.31-23S-33W
Finney County, Kansas

Dear Katherine McClurkan:

"Your temporary abandonment (TA) application for the well listed above has been approved. In accordance with K.A.R. 82-3-111 the TA status of this well will expire 07/14/2021.

- * If you return this well to service or plug it, please notify the District Office.
- * If you sell this well you are required to file a Transfer of Operator form, T-1.
- * If the well will remain temporarily abandoned, you must submit a new TA application, CP-111, before 07/14/2021.

You may contact me at the number above if you have questions.

Very truly yours,

Michael Maier"