

KANSAS CORPORATION COMMISSION
OIL & GAS CONSERVATION DIVISION

TEMPORARY ABANDONMENT WELL APPLICATION

OPERATOR: License#
Name:
Address 1:
Address 2:
City: State: Zip:
Contact Person:
Phone:
Contact Person Email:
Field Contact Person:
Field Contact Person Phone:

API No. 15-
Spot Description:
Sec. Twp. S. R.
GPS Location: Lat: Long:
Datum: NAD27 NAD83 WGS84
County: Elevation:
Lease Name: Well #:
Well Type: Oil Gas OG WSW Other:
SWD Permit #: ENHR Permit #:
Gas Storage Permit #:
Spud Date: Date Shut-In:

Table with 7 columns: Conductor, Surface, Production, Intermediate, Liner, Tubing. Rows include Size, Setting Depth, Amount of Cement, Top of Cement, Bottom of Cement.

Casing Fluid Level from Surface: How Determined? Date:
Casing Squeeze(s): to w / sacks of cement, to w / sacks of cement. Date:
Do you have a valid Oil & Gas Lease? Yes No
Depth and Type: Junk in Hole at Tools in Hole at Casing Leaks: Yes No Depth of casing leak(s):
Type Completion: ALT. I ALT. II Depth of: DV Tool: w / sacks of cement Port Collar: w / sack of cement
Packer Type: Size: Inch Set at: Feet
Total Depth: Plug Back Depth: Plug Back Method:

Geological Data:

Table with 4 columns: Formation Name, Formation Top, Formation Base, Completion Information. Rows 1 and 2.

UNDER PENALTY OF PERJURY I HEREBY ATTEST THAT THE INFORMATION CONTAINED HEREIN IS TRUE AND CORRECT TO THE BEST OF MY KNOWLEDGE

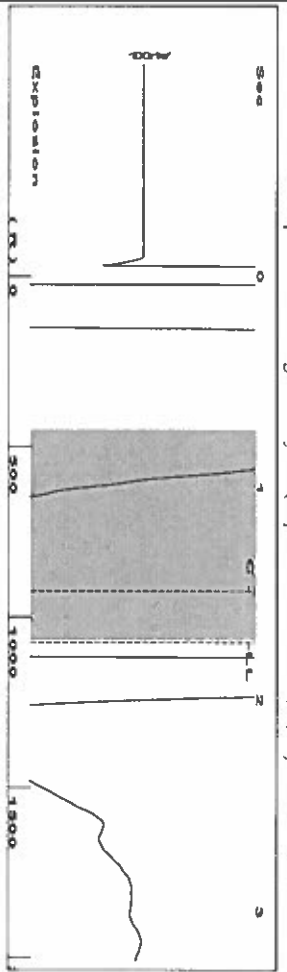
Submitted Electronically

Do NOT Write in This Space - KCC USE ONLY
Date Tested: Results: Date Plugged: Date Repaired: Date Put Back in Service:
Review Completed by: Comments:
TA Approved: Yes Denied Date:

Mail to the Appropriate KCC Conservation Office:

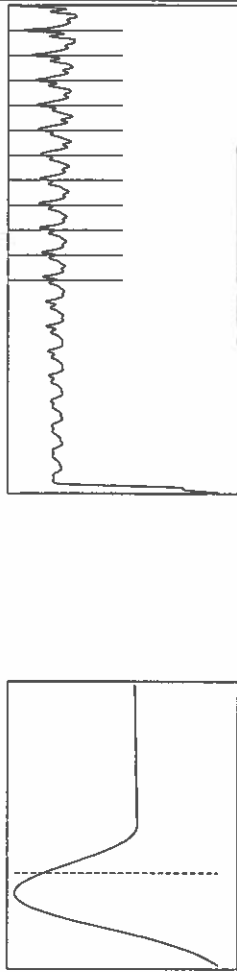
Table with 3 columns: District Office, Address, Phone. Rows for District Office #1, #2, #3, #4.

Group: TAVD Well: garden city m-3 (acquired on: 07/09/20 09:33:52)



Filter Type High Pass Automatic Collar Count Yes
 Manual Acoustic Veloc 238.28 ft/s Manual JTS/sec 19.5312
 Time 1.728 sec
 Joints 33.8824 Jts
 Depth 1074.07 ft

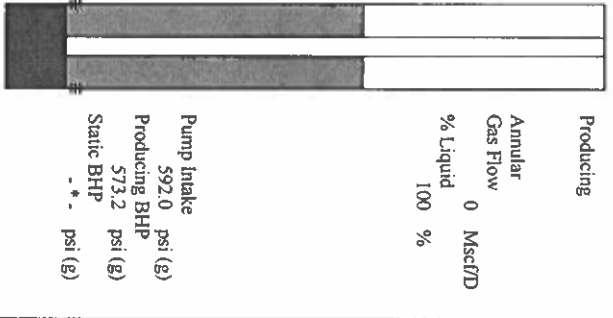
0.7 to 1.7 (Sec)



Analysis Method: Automatic

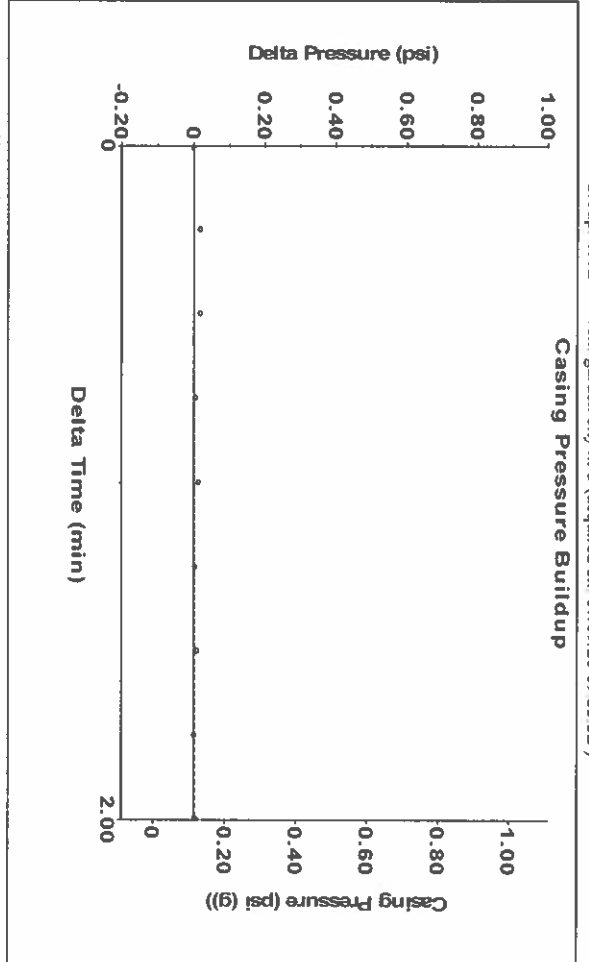
Group: TAVD Well: garden city m-3 (acquired on: 07/09/20 09:33:52)

Production	Potential	Casing Pressure	Producing
Oil -*-	-*- BBL/D	0.1 psi (g)	Annular Gas Flow 0 Mscf/D
Water -*-	-*- BBL/D	0.0 psi	% Liquid 100 %
Gas -*-	-*- Mscf/D	2.00 min	
		Gas/Liquid Interface Pressure 0.5 psi (g)	
IPR Method PBHP/SBHP	Vogel -*-	Liquid Level Depth 1074.07 ft	
Production Efficiency 0.0		Pump Intake Depth 2836.00 ft	
Oil 40 deg API		Formation Depth 2778.00 ft	
Water 1.05 Sp.Gr:H2O			
Gas 0.74 Sp.Gr:AIR			
Acoustic Velocity 1243.14 ft/s			



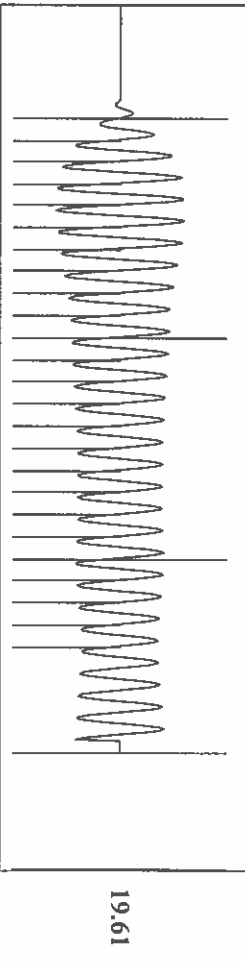
Pump Intake 592.0 psi (g)
 Producing BHP 573.2 psi (g)
 Static BHP -*- psi (g)

Group: TAVD Well: garden city m-3 (acquired on: 07/09/20 09:33:52)



Change in Pressure 0.00 psi PT 6902
 Change in Time 2.00 min Range 0.7 psi

Group: TAVD Well: garden city m-3 (acquired on: 07/09/20 09:33:52)



19.61

Acoustic Velocity 1243.14 ft/s Joints counted 24
 Joints Per Second 19.6078 Jts/sec Joints to liquid level 33.8824
 Depth to liquid level 1074.07 ft Filter Width 17.5312
 Automatic Collar Count Yes Time to 1st Collar 0.26

July 14, 2020

Katherine McClurkan
Merit Energy Company, LLC
13727 Noel Road, Suite 1200
Dallas, TX 75240-7362

Re: Temporary Abandonment
API 15-055-21900-00-01
Garden City M 3
NW/4 Sec.35-23S-34W
Finney County, Kansas

Dear Katherine McClurkan:

"Your temporary abandonment (TA) application for the well listed above has been approved. In accordance with K.A.R. 82-3-111 the TA status of this well will expire 07/14/2021.

- * If you return this well to service or plug it, please notify the District Office.
- * If you sell this well you are required to file a Transfer of Operator form, T-1.
- * If the well will remain temporarily abandoned, you must submit a new TA application, CP-111, before 07/14/2021.

You may contact me at the number above if you have questions.

Very truly yours,

Michael Maier"