

KANSAS CORPORATION COMMISSION  
OIL & GAS CONSERVATION DIVISION

Form must be Typed

Form must be signed

All blanks must be complete

## TEMPORARY ABANDONMENT WELL APPLICATION

OPERATOR: License# \_\_\_\_\_

Name: \_\_\_\_\_

Address 1: \_\_\_\_\_

Address 2: \_\_\_\_\_

City: \_\_\_\_\_ State: \_\_\_\_\_ Zip: \_\_\_\_\_ + \_\_\_\_\_

Contact Person: \_\_\_\_\_

Phone: ( \_\_\_\_\_ ) \_\_\_\_\_

Contact Person Email: \_\_\_\_\_

Field Contact Person: \_\_\_\_\_

Field Contact Person Phone: ( \_\_\_\_\_ ) \_\_\_\_\_

API No. 15- \_\_\_\_\_

Spot Description: \_\_\_\_\_

\_\_\_\_ - \_\_\_\_ - \_\_\_\_ - \_\_\_\_ Sec. \_\_\_\_\_ Twp. \_\_\_\_\_ S. R. \_\_\_\_\_ ☐ E ☐ W\_\_\_\_\_ feet from ☐ N / ☐ S Line of Section\_\_\_\_\_ feet from ☐ E / ☐ W Line of Section

GPS Location: Lat: \_\_\_\_\_, Long: \_\_\_\_\_

Datum: ☐ NAD27 ☐ NAD83 ☐ WGS84County: \_\_\_\_\_ Elevation: \_\_\_\_\_ ☐ GL ☐ KB

Lease Name: \_\_\_\_\_ Well #: \_\_\_\_\_

Well Type: (check one) ☐ Oil ☐ Gas ☐ OG ☐ WSW ☐ Other: \_\_\_\_\_☐ SWD Permit #: \_\_\_\_\_ ☐ ENHR Permit #: \_\_\_\_\_☐ Gas Storage Permit #: \_\_\_\_\_

Spud Date: \_\_\_\_\_ Date Shut-In: \_\_\_\_\_

	Conductor	Surface	Production	Intermediate	Liner	Tubing
Size						
Setting Depth						
Amount of Cement						
Top of Cement						
Bottom of Cement						

Casing Fluid Level from Surface: \_\_\_\_\_ How Determined? \_\_\_\_\_ Date: \_\_\_\_\_

Casing Squeeze(s): \_\_\_\_\_ to \_\_\_\_\_ w / \_\_\_\_\_ sacks of cement, \_\_\_\_\_ to \_\_\_\_\_ w / \_\_\_\_\_ sacks of cement. Date: \_\_\_\_\_

Do you have a valid Oil & Gas Lease? ☐ Yes ☐ NoDepth and Type: ☐ Junk in Hole at \_\_\_\_\_ ☐ Tools in Hole at \_\_\_\_\_ Casing Leaks: ☐ Yes ☐ No Depth of casing leak(s): \_\_\_\_\_Type Completion: ☐ ALT. I ☐ ALT. II Depth of: ☐ DV Tool: \_\_\_\_\_ w / \_\_\_\_\_ sacks of cement ☐ Port Collar: \_\_\_\_\_ w / \_\_\_\_\_ sack of cement

Packer Type: \_\_\_\_\_ Size: \_\_\_\_\_ Inch Set at: \_\_\_\_\_ Feet

Total Depth: \_\_\_\_\_ Plug Back Depth: \_\_\_\_\_ Plug Back Method: \_\_\_\_\_

**Geological Data:**

Formation Name	Formation Top	Formation Base	Completion Information
1. _____	At: _____ to _____ Feet	Perforation Interval _____ to _____ Feet or Open Hole Interval _____ to _____ Feet	
2. _____	At: _____ to _____ Feet	Perforation Interval _____ to _____ Feet or Open Hole Interval _____ to _____ Feet	

UNDER PENALTY OF PERJURY I HEREBY ATTEST THAT THE INFORMATION CONTAINED HEREIN IS TRUE AND CORRECT TO THE BEST OF MY KNOWLEDGE

Submitted Electronically

**Do NOT Write in This  
Space - KCC USE ONLY**

Date Tested: \_\_\_\_\_ Results: \_\_\_\_\_ Date Plugged: \_\_\_\_\_ Date Repaired: \_\_\_\_\_ Date Put Back in Service: \_\_\_\_\_

Review Completed by: \_\_\_\_\_ Comments: \_\_\_\_\_

TA Approved: ☐ Yes ☐ Denied Date: \_\_\_\_\_

## Mail to the Appropriate KCC Conservation Office:

	KCC District Office #1 - 210 E. Frontview, Suite A, Dodge City, KS 67801	Phone 620.682.7933
	KCC District Office #2 - 3450 N. Rock Road, Building 600, Suite 601, Wichita, KS 67226	Phone 316.337.7400
	KCC District Office #3 - 137 E. 21st St., Chanute, KS 66720	Phone 620.902.6450
	KCC District Office #4 - 2301 E. 13th Street, Hays, KS 67601-2651	Phone 785.261.6250

## General

Well ID 127455  
Well Dean 3408 3-27H  
Company Sandridge  
Operator - \* -  
Lease Name Dean 3408 3-27H  
Elevation 1316.00 ft  
Production Method Other  
Dataset Description  
Shot 2

Comment

## Surface Unit

Manufacturer - \* -  
Unit Class Conventional  
Unit API Number - \* -  
Measured Stroke Length - \* - in  
Rotation CW  
Counter Balance Effect (Weights Level) - \* - Klb  
Weight Of Counter Weights 2000 lb

## Prime Mover

Motor Type Electric  
Rated HP - \* - HP  
Run Time 24 hr/day  
MFG/Comment  
- \* -

## Electric Motor Parameters

Rated Full Load AMPS - \* -  
Rated Full Load RPM - \* -  
Synchronous RPM 1200  
Voltage - \* -  
Hertz 60  
Phase 3  
Power Consumption 5  
Power Demand 8 \$/KW

## Tubulars

Tubing OD 2.875 in  
Casing OD 7.000 in  
Average Joint Length 31.700 ft  
Anchor Depth - \* - ft  
Kelly Bushing 18.00 ft

## Pump

Plunger Diameter - \* - in  
Pump Intake Depth 5490.00 ft  
\*\*Total Rod Length < Pump Depth

## Polished Rod

Polished Rod Diameter - \* - in

## Rod String

	Top Taper	Taper 2	Taper 3	Taper 4	Taper 5	Taper 6
Rod Type	- * -	- * -	- * -	- * -	- * -	- * -
Rod Length	- * -	- * -	- * -	- * -	- * -	- * - ft
Rod Diameter	- * -	- * -	- * -	- * -	- * -	- * - in
Rod Weight	0.0	0.0	0.0	0.0	0.0	0.0 lb

Total Rod Length 0  
Total Rod Weight 0.00

Damp Up 0.05  
Damp Down 0.05

## Conditions

### Pressure

Static BHP 173.9 psi (g)  
Static BHP Method Acoustic  
Static BHP Date 06/17/2020

Producing BHP - \* - psi (g)  
Producing BHP Method - \* -  
Producing BHP Date - \* -  
Formation Depth 5557.00 ft

### Surface Producing Pressures

Tubing Pressure 100.0 psi (g)  
Casing Pressure 50.7 psi (g)

### Casing Pressure Buildup

Change in Pressure -0.256 psi  
Over Change in Time 1.00 min

### Production

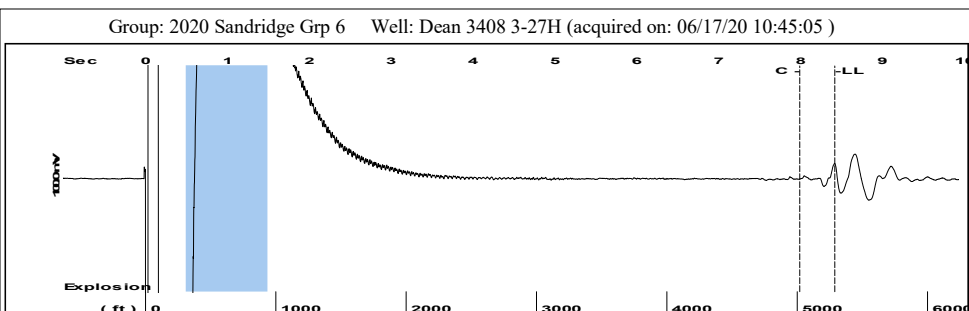
Oil Production 0 BBL/D  
Water Production 1 BBL/D  
Gas Production - \* - Mscf/D  
Production Date 01/31/2018

### Temperatures

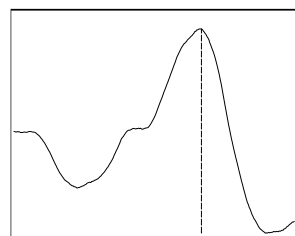
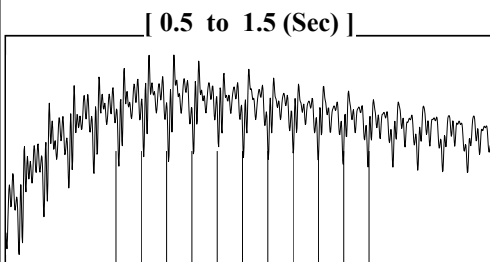
Surface Temperature 70 deg F  
Bottomhole Temperature 150 deg F

### Fluid Properties

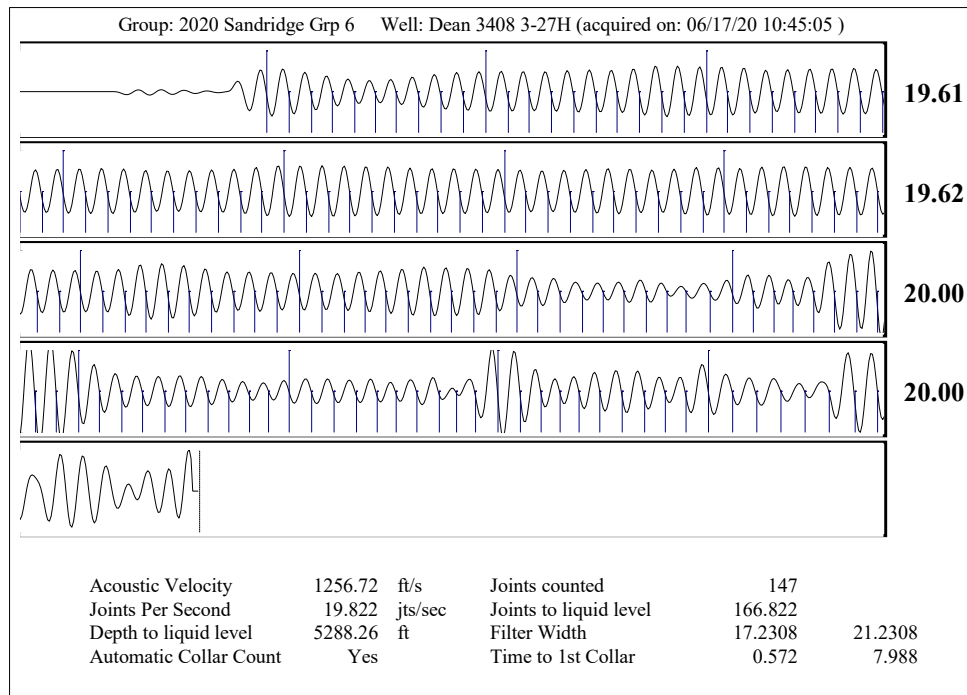
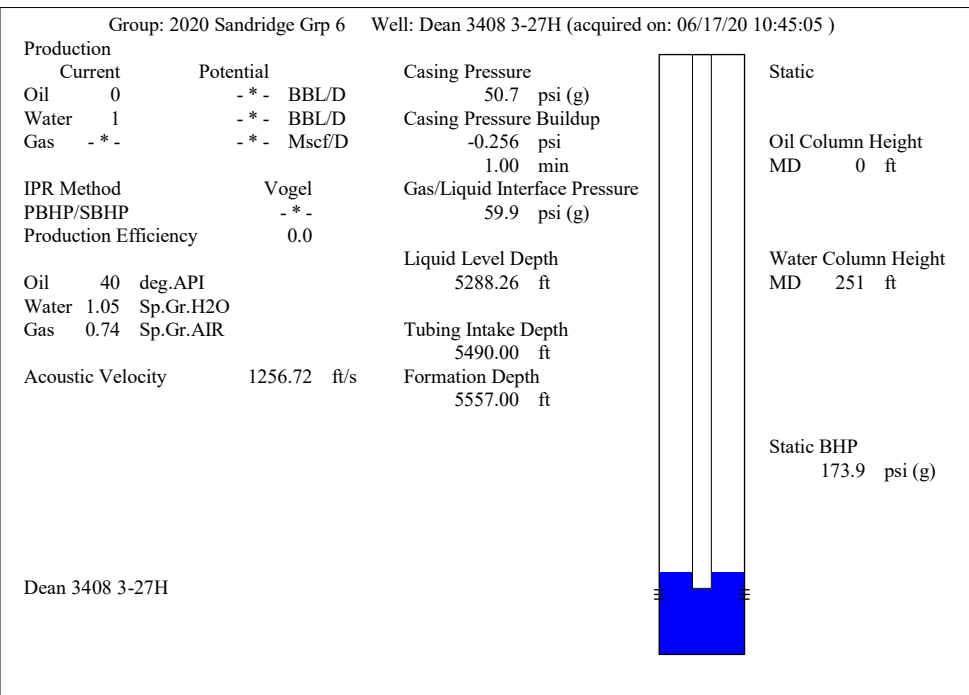
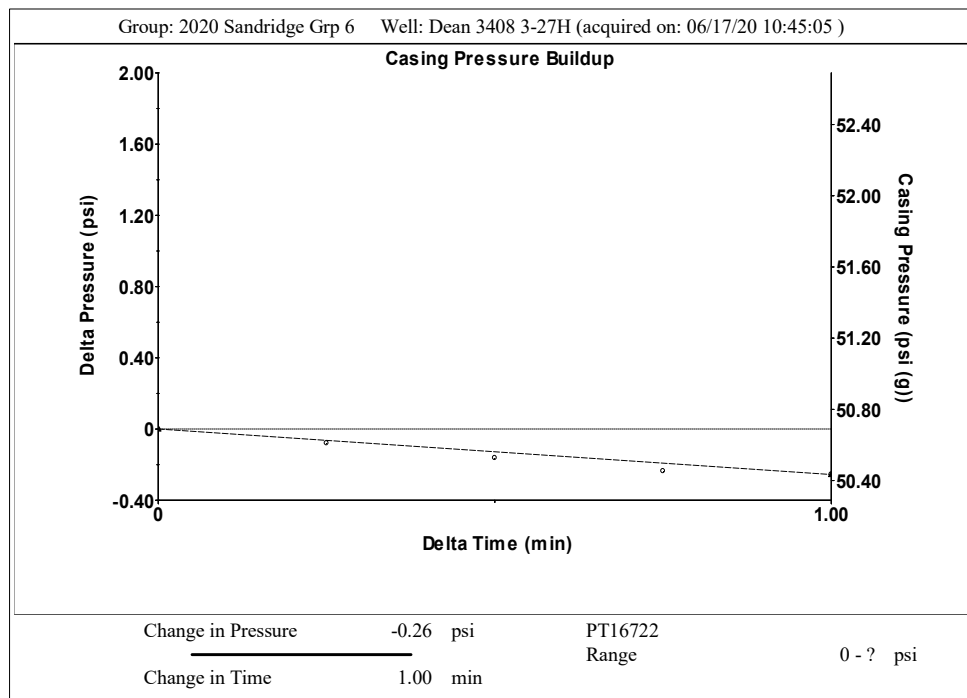
Oil API 40 deg.API  
Water Specific Gravity 1.05 Sp.Gr.H2O



Filter Type High Pass Automatic Collar Count Yes Time 8.416 sec  
 Manual Acoustic Veloc 1219.23 ft/s Manual JTS/sec 19.2308 Joints 166.822 Jts  
 Depth 5288.26 ft



**Analysis Method: Automatic**



July 14, 2020

Collette Davis  
SandRidge Exploration and Production LLC  
123 ROBERT S. KERR AVE  
OKLAHOMA CITY, OK 73102-6406

Re: Temporary Abandonment  
API 15-077-22080-01-00  
DEAN 3408 3-27H  
NE/4 Sec.27-34S-08W  
Harper County, Kansas

Dear Collette Davis:

"Your temporary abandonment (TA) application for the well listed above has been approved. In accordance with K.A.R. 82-3-111 the TA status of this well will expire 07/14/2021.

- \* If you return this well to service or plug it, please notify the District Office.
- \* If you sell this well you are required to file a Transfer of Operator form, T-1.
- \* If the well will remain temporarily abandoned, you must submit a new TA application, CP-111, before 07/14/2021.

You may contact me at the number above if you have questions.

Very truly yours,

Steve VanGieson"