

KANSAS CORPORATION COMMISSION  
OIL & GAS CONSERVATION DIVISION

TEMPORARY ABANDONMENT WELL APPLICATION

OPERATOR: License# \_\_\_\_\_  
 Name: \_\_\_\_\_  
 Address 1: \_\_\_\_\_  
 Address 2: \_\_\_\_\_  
 City: \_\_\_\_\_ State: \_\_\_\_\_ Zip: \_\_\_\_\_ + \_\_\_\_\_  
 Contact Person: \_\_\_\_\_  
 Phone: ( \_\_\_\_\_ ) \_\_\_\_\_  
 Contact Person Email: \_\_\_\_\_  
 Field Contact Person: \_\_\_\_\_  
 Field Contact Person Phone: ( \_\_\_\_\_ ) \_\_\_\_\_

API No. 15- \_\_\_\_\_  
 Spot Description: \_\_\_\_\_  
 \_\_\_\_\_ - \_\_\_\_\_ - \_\_\_\_\_ - \_\_\_\_\_ Sec. \_\_\_\_\_ Twp. \_\_\_\_\_ S. R. \_\_\_\_\_  E  W  
 \_\_\_\_\_ feet from  N /  S Line of Section  
 \_\_\_\_\_ feet from  E /  W Line of Section  
 GPS Location: Lat: \_\_\_\_\_, Long: \_\_\_\_\_  
(e.g. xx.xxxxx) (e.g. -xxx.xxxxx)  
 Datum:  NAD27  NAD83  WGS84  
 County: \_\_\_\_\_ Elevation: \_\_\_\_\_  GL  KB  
 Lease Name: \_\_\_\_\_ Well #: \_\_\_\_\_  
 Well Type: (check one)  Oil  Gas  OG  WSW  Other: \_\_\_\_\_  
 SWD Permit #: \_\_\_\_\_  ENHR Permit #: \_\_\_\_\_  
 Gas Storage Permit #: \_\_\_\_\_  
 Spud Date: \_\_\_\_\_ Date Shut-In: \_\_\_\_\_

	Conductor	Surface	Production	Intermediate	Liner	Tubing
Size						
Setting Depth						
Amount of Cement						
Top of Cement						
Bottom of Cement						

Casing Fluid Level from Surface: \_\_\_\_\_ How Determined? \_\_\_\_\_ Date: \_\_\_\_\_  
 Casing Squeeze(s): \_\_\_\_\_ to \_\_\_\_\_ w / \_\_\_\_\_ sacks of cement, \_\_\_\_\_ to \_\_\_\_\_ w / \_\_\_\_\_ sacks of cement. Date: \_\_\_\_\_  
(top) (bottom) (top) (bottom)  
 Do you have a valid Oil & Gas Lease?  Yes  No  
 Depth and Type:  Junk in Hole at \_\_\_\_\_  Tools in Hole at \_\_\_\_\_ Casing Leaks:  Yes  No Depth of casing leak(s): \_\_\_\_\_  
(depth) (depth)  
 Type Completion:  ALT. I  ALT. II Depth of:  DV Tool: \_\_\_\_\_ w / \_\_\_\_\_ sacks of cement  Port Collar: \_\_\_\_\_ w / \_\_\_\_\_ sack of cement  
(depth) (depth)  
 Packer Type: \_\_\_\_\_ Size: \_\_\_\_\_ Inch Set at: \_\_\_\_\_ Feet  
 Total Depth: \_\_\_\_\_ Plug Back Depth: \_\_\_\_\_ Plug Back Method: \_\_\_\_\_

**Geological Data:**

Formation Name	Formation Top	Formation Base	Completion Information
1. _____	At: _____	to _____ Feet	Perforation Interval _____ to _____ Feet or Open Hole Interval _____ to _____ Feet
2. _____	At: _____	to _____ Feet	Perforation Interval _____ to _____ Feet or Open Hole Interval _____ to _____ Feet

UNDER PENALTY OF PERJURY I HEREBY ATTEST THAT THE INFORMATION CONTAINED HEREIN IS TRUE AND CORRECT TO THE BEST OF MY KNOWLEDGE

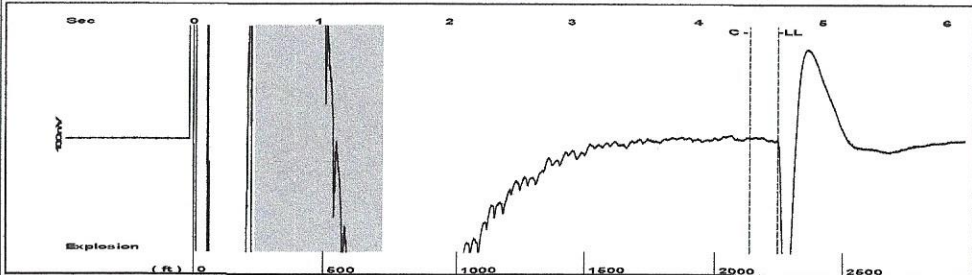
Submitted Electronically

<b>Do NOT Write in This Space - KCC USE ONLY</b>	Date Tested: _____	Results: _____	Date Plugged: _____	Date Repaired: _____	Date Put Back in Service: _____
	Review Completed by: _____ Comments: _____				
TA Approved: <input type="checkbox"/> Yes <input type="checkbox"/> Denied Date: _____					

Mail to the Appropriate KCC Conservation Office:

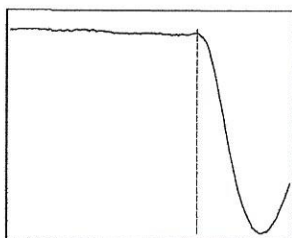
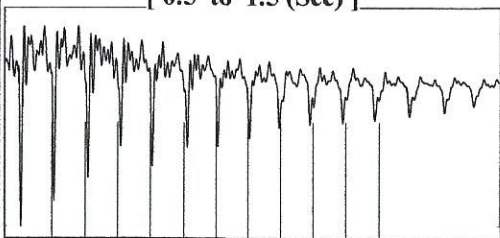
	KCC District Office #1 - 210 E. Frontview, Suite A, Dodge City, KS 67801	Phone 620.682.7933
	KCC District Office #2 - 3450 N. Rock Road, Building 600, Suite 601, Wichita, KS 67226	Phone 316.337.7400
	KCC District Office #3 - 137 E. 21st St., Chanute, KS 66720	Phone 620.902.6450
	KCC District Office #4 - 2301 E. 13th Street, Hays, KS 67601-2651	Phone 785.261.6250

Group: Belpre Well: Embry A 4-23 (acquired on: 07/14/20 12:29:40 )



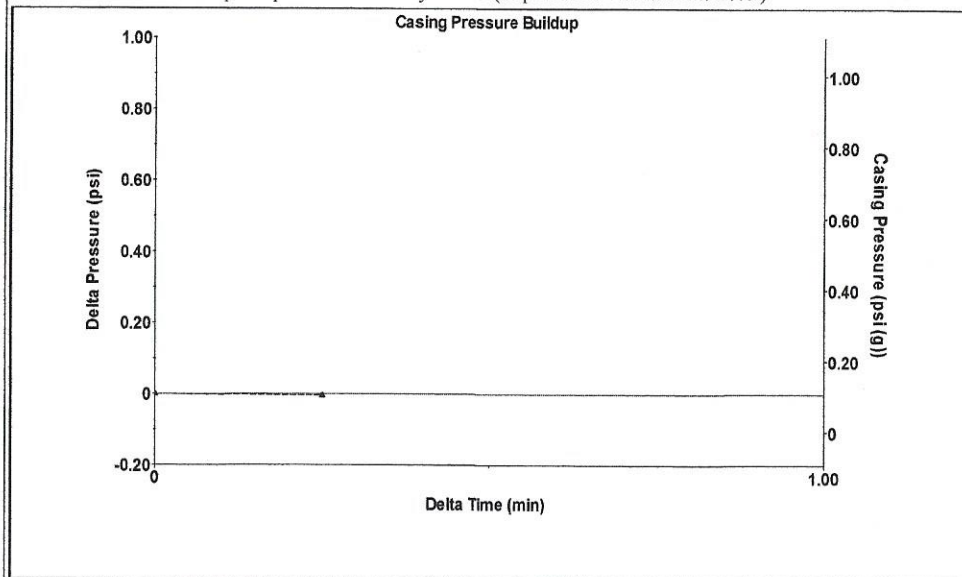
Filter Type High Pass Automatic Collar Count Yes Time 4.642 sec  
 Manual Acoustic Velo 964.653 ft/s Manual JTS/sec 15.1057 Joints 70.2995 Jts  
 Depth 2244.66 ft

[ 0.5 to 1.5 (Sec) ]



Analysis Method: Automatic

Group: Belpre Well: Embry A 4-23 (acquired on: 07/14/20 12:29:40 )

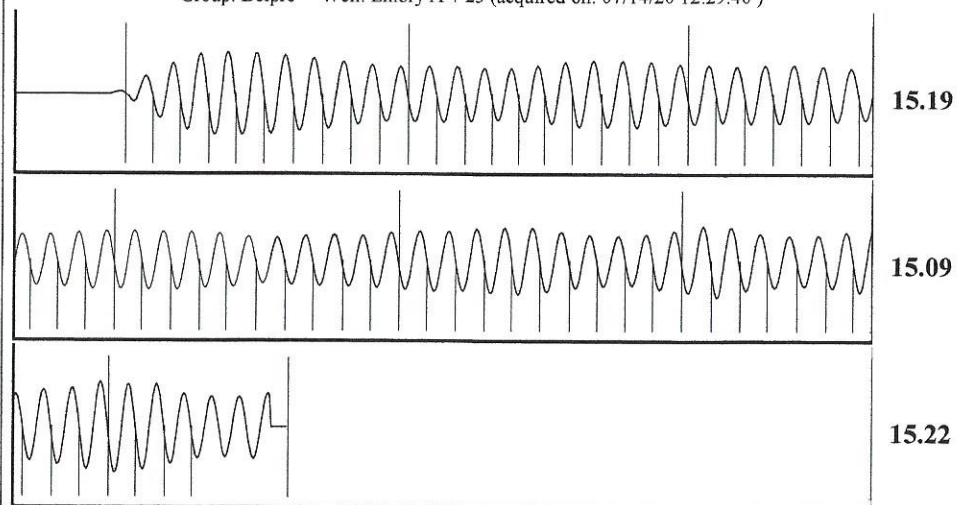


Change in Pressure -0.00 psi PT13440  
 Range 0 - ? psi  
 Change in Time 0.25 min

Group: Belpre Well: Embry A 4-23 (acquired on: 07/14/20 12:29:40 )

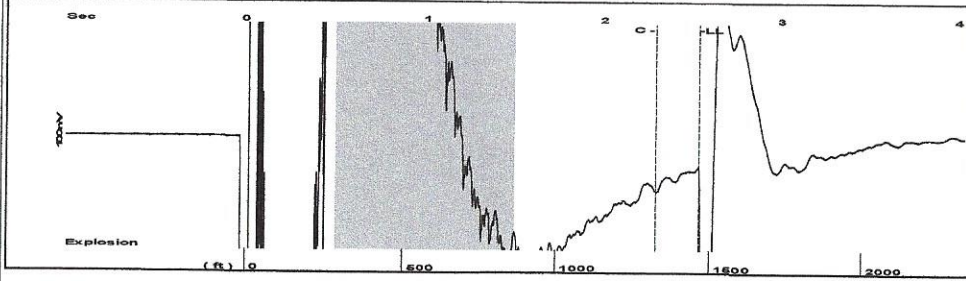
Production	Potential	Casing Pressure	Producing
Current		0.1 psi (g)	
Oil -*- BBL/D		Casing Pressure Buildup	Annular Gas Flow
Water -*- BBL/D		-0.005 psi	0 Mscf/D
Gas -*- Mscf/D		0.25 min	% Liquid
		Gas/Liquid Interface Pressure	100 %
IPR Method	Vogel	1.3 psi (g)	
PBHP/SBHP	-*-		
Production Efficiency	0.0	Liquid Level Depth	
		2244.66 ft	
Oil 40 deg.API		Pump Intake Depth	
Water 1.05 Sp.Gr.H2O		3992.00 ft	
Gas 1.01 Sp.Gr.AIR		Formation Depth	
		3785.00 ft	
Acoustic Velocity	967.111 ft/s		
		Pump Intake	
		586.5 psi (g)	
Formation Submergence		Producing BHP	
Total Gaseous Liquid Column HT (TVD)	1747 ft	519.8 psi (g)	
Equivalent Gas Free Liquid HT (TVD)	1747 ft	Static BHP	
		-*- psi (g)	

Group: Belpre Well: Embry A 4-23 (acquired on: 07/14/20 12:29:40 )



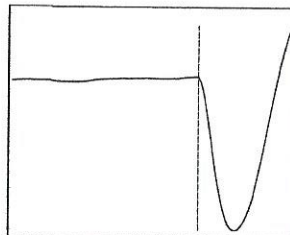
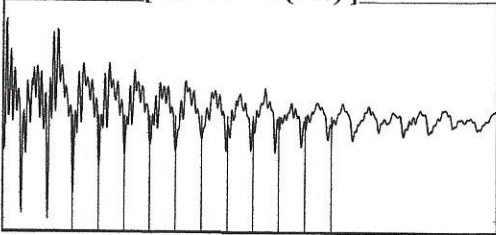
Acoustic Velocity 967.111 ft/s Joints counted 63  
 Joints Per Second 15.1442 jts/sec Joints to liquid level 70.2995  
 Depth to liquid level 2244.66 ft Filter Width 13.1057 17.1057  
 Automatic Collar Count Yes Time to 1st Collar 0.256 4.416

Group: Ellinwood-Curtis Well: Sleeper 3-10 (acquired on: 07/17/20 10:02:55 )



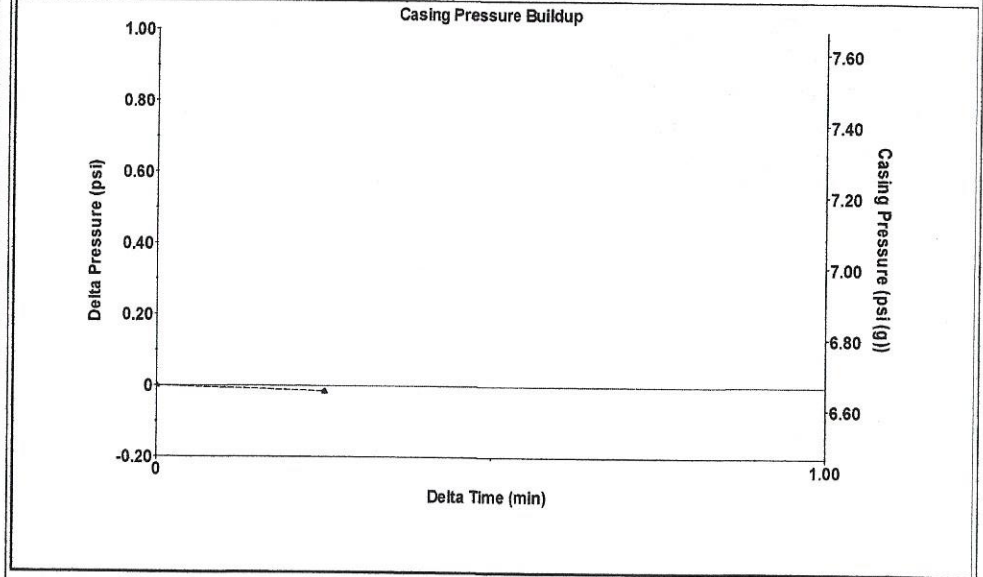
Filter Type High Pass Automatic Collar Count Yes Time 2.533 sec  
 Manual Acoustic Velo 1145.04 ft/s Manual JTS/sec 19.084 Joints 48.8078 Jts  
 Depth 1464.23 ft

[ 0.5 to 1.5 (Sec) ]



Analysis Method: Automatic

Group: Ellinwood-Curtis Well: Sleeper 3-10 (acquired on: 07/17/20 10:02:55 )



Change in Pressure -0.02 psi PT13440  
 Change in Time 0.25 min Range 0 - ? psi

Group: Ellinwood-Curtis Well: Sleeper 3-10 (acquired on: 07/17/20 10:02:55 )

Production Current Potential  
 Oil - \* - - \* - BBL/D  
 Water - \* - - \* - BBL/D  
 Gas - \* - - \* - Mscf/D  
 IPR Method Vogel  
 PBHP/SBHP - \* -  
 Production Efficiency 0.0

Casing Pressure 6.7 psi (g)  
 Casing Pressure Buildup -0.015 psi  
 0.25 min  
 Gas/Liquid Interface Pressure 7.6 psi (g)

Liquid Level Depth 1464.23 ft  
 Pump Intake Depth - \* - ft  
 Formation Depth 3030.00 ft

Producing  
 Annular Gas Flow 0 Mscf/D  
 % Liquid 100 %

Oil 40 deg.API  
 Water 1.05 Sp.Gr.H2O  
 Gas 0.82 Sp.Gr.AIR

Acoustic Velocity 1156.13 ft/s

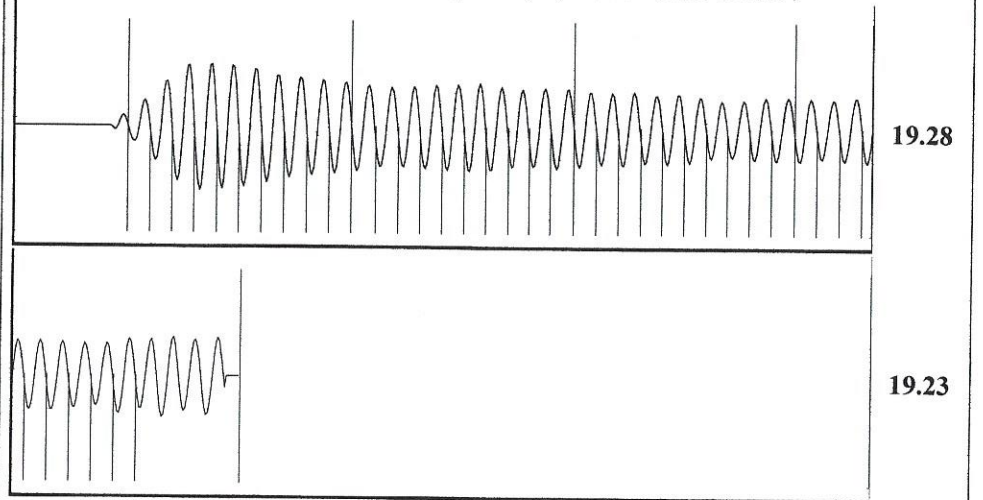
Formation Submergence  
 Total Gaseous Liquid Column HT (TVD) 1566 ft  
 Equivalent Gas Free Liquid HT (TVD) 1566 ft

Acoustic Test

Pump Intake - \* - psi (g)  
 Producing BHP 719.4 psi (g)  
 Static BHP 313.0 psi (g)



Group: Ellinwood-Curtis Well: Sleeper 3-10 (acquired on: 07/17/20 10:02:55 )



Acoustic Velocity 1156.13 ft/s Joints counted 39  
 Joints Per Second 19.2688 jts/sec Joints to liquid level 48.8078  
 Depth to liquid level 1464.23 ft Filter Width 17.084  
 Automatic Collar Count Yes Time to 1st Collar 0.264 2.288

July 21, 2020

Loveness Mpanje  
F. G. Holl Company L.L.C.  
9431 E CENTRAL STE 100  
WICHITA, KS 67206-2563

Re: Temporary Abandonment  
API 15-047-20944-00-00  
EMBRY - A 4-23  
NW/4 Sec.23-24S-16W  
Edwards County, Kansas

Dear Loveness Mpanje:

"Your temporary abandonment (TA) application for the well listed above has been approved. In accordance with K.A.R. 82-3-111 the TA status of this well will expire 07/21/2021.

- \* If you return this well to service or plug it, please notify the District Office.
- \* If you sell this well you are required to file a Transfer of Operator form, T-1.
- \* If the well will remain temporarily abandoned, you must submit a new TA application, CP-111, before 07/21/2021.

You may contact me at the number above if you have questions.

Very truly yours,

Michael Maier"