

KANSAS CORPORATION COMMISSION
OIL & GAS CONSERVATION DIVISION

TEMPORARY ABANDONMENT WELL APPLICATION

OPERATOR: License#
Name:
Address 1:
Address 2:
City: State: Zip:
Contact Person:
Phone:
Contact Person Email:
Field Contact Person:
Field Contact Person Phone:

API No. 15-
Spot Description:
Sec. Twp. S. R.
GPS Location: Lat, Long
Datum: NAD27, NAD83, WGS84
County: Elevation:
Lease Name: Well #:
Well Type: Oil, Gas, OG, WSW, Other
SWD Permit #: ENHR Permit #:
Gas Storage Permit #:
Spud Date: Date Shut-In:

Table with 7 columns: Conductor, Surface, Production, Intermediate, Liner, Tubing. Rows include Size, Setting Depth, Amount of Cement, Top of Cement, Bottom of Cement.

Casing Fluid Level from Surface: How Determined? Date:
Casing Squeeze(s): to w / sacks of cement, to w / sacks of cement. Date:
Do you have a valid Oil & Gas Lease? Yes No
Depth and Type: Junk in Hole at Tools in Hole at Casing Leaks: Yes No Depth of casing leak(s):
Type Completion: ALT. I ALT. II Depth of: DV Tool: w / sacks of cement Port Collar: w / sack of cement
Packer Type: Size: Inch Set at: Feet
Total Depth: Plug Back Depth: Plug Back Method:

Geological Data:

Table with 4 columns: Formation Name, Formation Top, Formation Base, Completion Information. Rows 1 and 2.

UNDER PENALTY OF PERJURY I HEREBY ATTEST THAT THE INFORMATION CONTAINED HEREIN IS TRUE AND CORRECT TO THE BEST OF MY KNOWLEDGE

Submitted Electronically

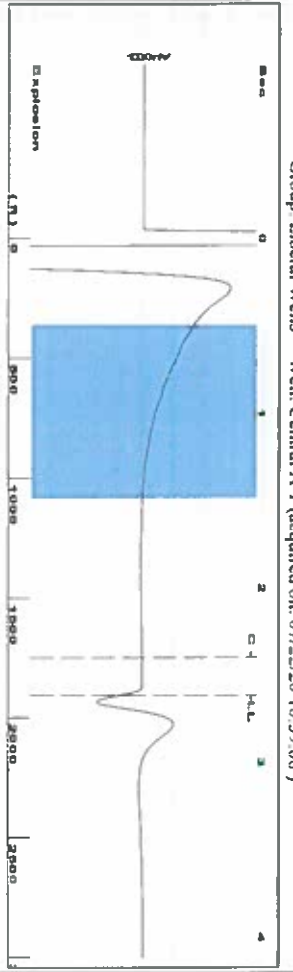
Do NOT Write in This Space - KCC USE ONLY
Date Tested: Results: Date Plugged: Date Repaired: Date Put Back in Service:
Review Completed by: Comments:
TA Approved: Yes Denied Date:

Mail to the Appropriate KCC Conservation Office:

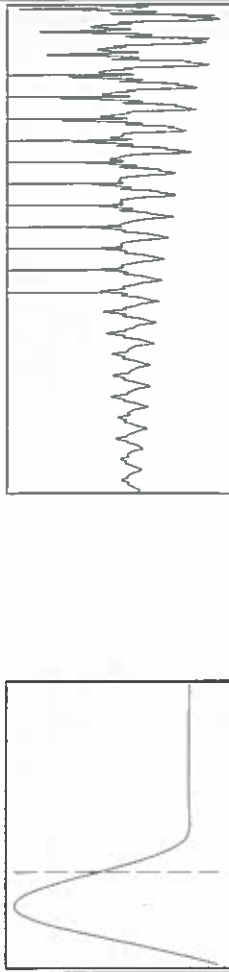
Table with 2 columns: Office Address, Phone. Rows for District Office #1, #2, #3, #4.



Group: Liberal Wells Well: Central A-1 (acquired on: 07/22/20 10:39:08)



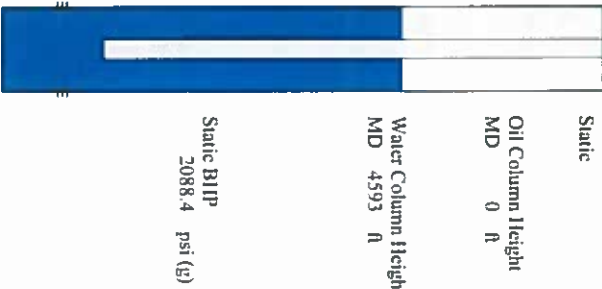
Filter Type High Pass N/S Automatic Collar Count Yes Time 2.618 sec  
 Manual Acoustic Velocity 1457.18 Manual JTS/sec 22.3214 Joints 60.1698 J/s  
 Depth 1907.38 ft



Analysis Method: Automatic

Group: Liberal Wells Well: Central A-1 (acquired on: 07/22/20 10:39:08)

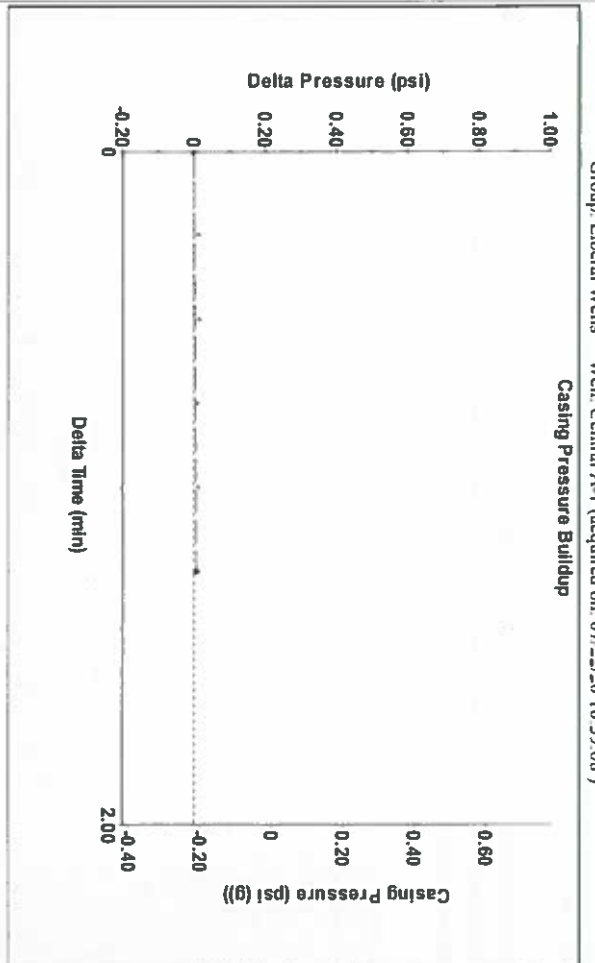
Production Current	Potential	Casing Pressure	Static
Oil 0	-*- BBL/D	-0.2 psi (g)	
Water 0	-*- BBL/D	Casing Pressure Buildup	Oil Column Height
Gas 50.0	-*- Mscf/D	0.007 psi	MD 0 ft
		1.25 min	
JPR Method	Vogel	Gas/Liquid Interface Pressure	
PBHP/SBHP	-*-	0.3 psi (g)	
Production Efficiency	0.0		
Oil 40 deg API		Liquid Level Depth	Water Column Height
Water 1.05 Sp.Gr.120		1907.38 ft	MD 4593 ft
Gas 0.55 Sp.Gr.AIR		Pump Intake Depth	
Acoustic Velocity	1457.13 ft/s	5942.00 ft	
		Formation Depth	
		6500.00 ft	



Acoustic Test

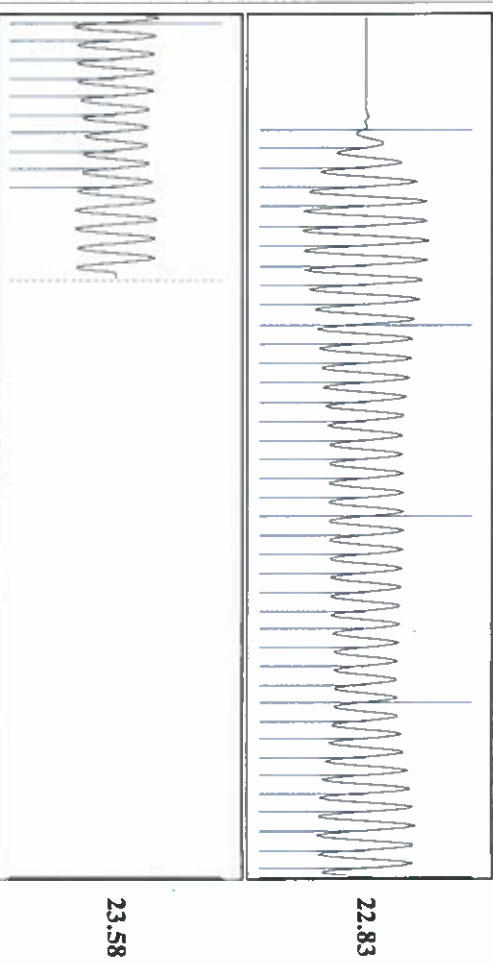
Group: Liberal Wells Well: Central A-1 (acquired on: 07/22/20 10:39:08)

Casing Pressure Buildup



Change in Pressure 0.01 psi PT9424  
 Change in Time 1.25 min Range 0 - ? psi

Group: Liberal Wells Well: Central A-1 (acquired on: 07/22/20 10:39:08)



Acoustic Velocity	1457.13 ft/s	Joints counted	49
Joints Per Second	22.9831 J/s/sec	Joints to liquid level	60.1698
Depth to liquid level	1907.38 ft	Filler Width	20.3214
Automatic Collar Count	Yes	Time to 1st Collar	0.268

July 28, 2020

Katherine McClurkan  
Merit Energy Company, LLC  
13727 Noel Road, Suite 1200  
Dallas, TX 75240-7362

Re: Temporary Abandonment  
API 15-189-22375-00-00  
Central A 1  
SW/4 Sec.31-34S-35W  
Stevens County, Kansas

Dear Katherine McClurkan:

"Your temporary abandonment (TA) application for the well listed above has been approved. In accordance with K.A.R. 82-3-111 the TA status of this well will expire 07/28/2021.

- \* If you return this well to service or plug it, please notify the District Office.
- \* If you sell this well you are required to file a Transfer of Operator form, T-1.
- \* If the well will remain temporarily abandoned, you must submit a new TA application, CP-111, before 07/28/2021.

You may contact me at the number above if you have questions.

Very truly yours,

Michael Maier"