

KANSAS CORPORATION COMMISSION
OIL & GAS CONSERVATION DIVISION

TEMPORARY ABANDONMENT WELL APPLICATION

OPERATOR: License#
Name:
Address 1:
Address 2:
City: State: Zip:
Contact Person:
Phone:
Contact Person Email:
Field Contact Person:
Field Contact Person Phone:

API No. 15-
Spot Description:
Sec. Twp. S. R.
GPS Location: Lat: Long:
Datum: NAD27 NAD83 WGS84
County: Elevation:
Lease Name: Well #:
Well Type: Oil Gas OG WSW Other:
SWD Permit #: ENHR Permit #:
Gas Storage Permit #:
Spud Date: Date Shut-In:

Table with 7 columns: Conductor, Surface, Production, Intermediate, Liner, Tubing. Rows include Size, Setting Depth, Amount of Cement, Top of Cement, Bottom of Cement.

Casing Fluid Level from Surface: How Determined? Date:
Casing Squeeze(s): to w / sacks of cement, to w / sacks of cement. Date:
Do you have a valid Oil & Gas Lease? Yes No
Depth and Type: Junk in Hole at Tools in Hole at Casing Leaks: Yes No Depth of casing leak(s):
Type Completion: ALT. I ALT. II Depth of: DV Tool: w / sacks of cement Port Collar: w / sack of cement
Packer Type: Size: Inch Set at: Feet
Total Depth: Plug Back Depth: Plug Back Method:

Geological Data:

Table with 4 columns: Formation Name, Formation Top, Formation Base, Completion Information. Rows 1 and 2.

UNDER PENALTY OF PERJURY I HEREBY ATTEST THAT THE INFORMATION CONTAINED HEREIN IS TRUE AND CORRECT TO THE BEST OF MY KNOWLEDGE

Submitted Electronically

Do NOT Write in This Space - KCC USE ONLY
Date Tested: Results: Date Plugged: Date Repaired: Date Put Back in Service:
Review Completed by: Comments:
TA Approved: Yes Denied Date:

Mail to the Appropriate KCC Conservation Office:

Table with 3 columns: District Office, Address, Phone. Rows for District Office #1, #2, #3, #4.

General

Well ID 126655
 Well Bob 3508 1-4H
 Company SandRidge Energy
 Operator - * -
 Lease Name Bob 3508 1-4H
 Elevation 1275.00 ft
 Production Method Other
 Dataset Description

Comment

Surface Unit

Manufacturer - * -
 Unit Class Conventional
 Unit API Number - * -
 Measured Stroke Length 100.000 in
 Rotation CW
 Counter Balance Effect (Weights Level) - * - Klb
 Weight Of Counter Weights 2000 lb

Prime Mover

Motor Type Electric
 Rated HP - * - HP
 Run Time 24 hr/day
 MFG/Comment - * -

Electric Motor Parameters

Rated Full Load AMPS - * -
 Rated Full Load RPM - * -
 Synchronous RPM 1200
 Voltage - * -
 Hertz 60
 Phase 3
 Power Consumption 5
 Power Demand 8 \$/KW

Tubulars

Tubing OD 3.500 in
 Casing OD 7.000 in
 Average Joint Length 31.700 ft
 Anchor Depth - * - ft
 Kelly Bushing 16.00 ft

Pump

Plunger Diameter - * - in
 Pump Intake Depth 5400.00 ft
 **Total Rod Length < Pump Depth

Polished Rod

Polished Rod Diameter - * - in

Rod String

	Top Taper	Taper 2	Taper 3	Taper 4	Taper 5	Taper 6
Rod Type	- * -	- * -	- * -	- * -	- * -	- * -
Rod Length	- * -	- * -	- * -	- * -	- * -	- * - ft
Rod Diameter	- * -	- * -	- * -	- * -	- * -	- * - in
Rod Weight	0.0	0.0	0.0	0.0	0.0	0.0 lb

Total Rod Length 0
 Total Rod Weight 0.00

Damp Up 0.05
 Damp Down 0.05

Conditions

Pressure

Static BHP 350.9 psi (g)
 Static BHP Method Acoustic
 Static BHP Date 07/20/2020

Producing BHP - * - psi (g)
 Producing BHP Method - * -
 Producing BHP Date - * -
 Formation Depth 5504.00 ft

Surface Producing Pressures

Tubing Pressure - * - psi (g)
 Casing Pressure 144.5 psi (g)

Casing Pressure Buildup

Change in Pressure -0.306 psi
 Over Change in Time 1.25 min

Production

Oil Production 0 BBL/D
 Water Production 1 BBL/D
 Gas Production - * - Mscf/D
 Production Date 07/20/2020

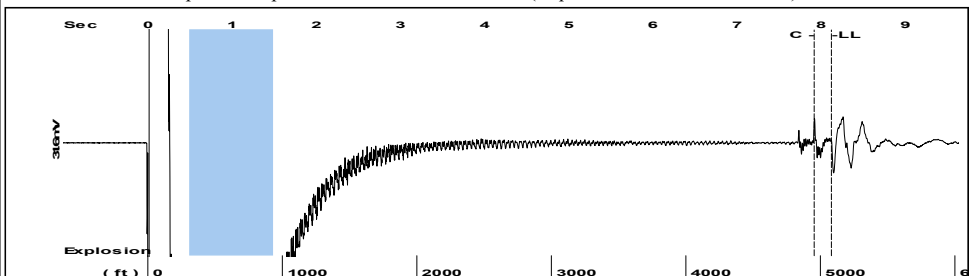
Temperatures

Surface Temperature 70 deg F
 Bottomhole Temperature 150 deg F

Fluid Properties

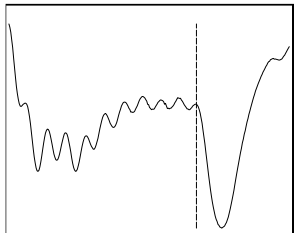
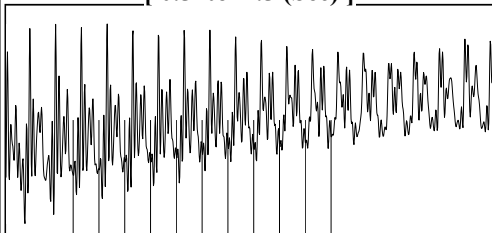
Oil API 40 deg.API
 Water Specific Gravity 1.05 Sp.Gr.H2O

Group: 2020 Grp 7 KS Well: Bob 3508 1-4H (acquired on: 07/20/20 12:22:56)



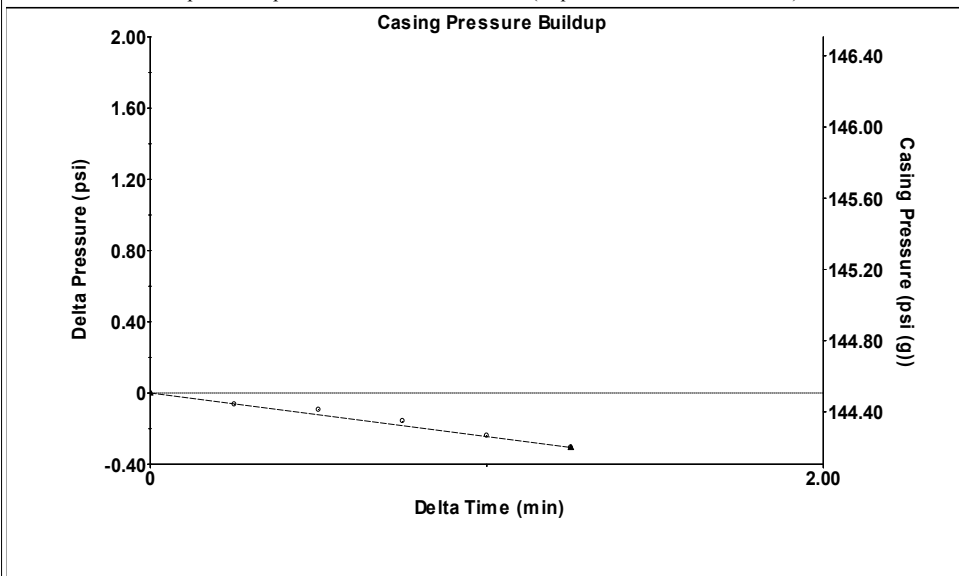
Filter Type High Pass Automatic Collar Count Yes Time 8.121 sec
 Manual Acoustic Veloc 1196.23 ft/s Manual JTS/sec 18.8679 Joints 160.312 Jts
 Depth 5081.88 ft

[0.5 to 1.5 (Sec)]



Analysis Method: Automatic

Group: 2020 Grp 7 KS Well: Bob 3508 1-4H (acquired on: 07/20/20 12:22:56)

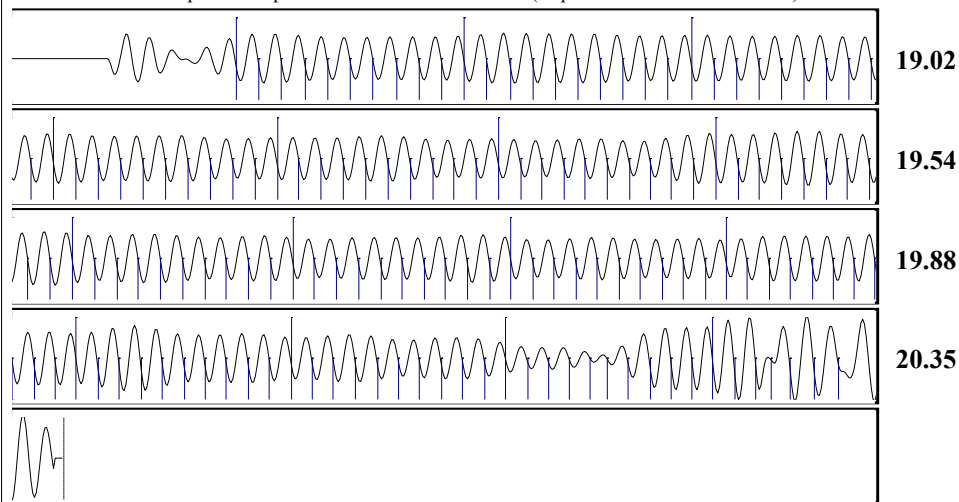


Change in Pressure -0.31 psi PT16722
 Change in Time 1.25 min Range 0 - ? psi

Group: 2020 Grp 7 KS Well: Bob 3508 1-4H (acquired on: 07/20/20 12:22:56)

Production	Potential	Casing Pressure		Static
Current		144.5 psi (g)		Oil Column Height
Oil 0	- * - BBL/D	Casing Pressure Buildup		MD 0 ft
Water 1	- * - BBL/D	1.25 min		Water Column Height
Gas - * -	- * - Mscf/D	Gas/Liquid Interface Pressure		MD 406 ft
IPR Method	Vogel	Liquid Level Depth		Static BHP
PBHP/SBHP	- * -	5081.88 ft		350.9 psi (g)
Production Efficiency	0.0	Tubing Intake Depth		
Oil 40 deg.API		5400.00 ft		
Water 1.05 Sp.Gr.H2O		Formation Depth		
Gas 0.73 Sp.Gr.AIR		5504.00 ft		
Acoustic Velocity	1251.54 ft/s			

Group: 2020 Grp 7 KS Well: Bob 3508 1-4H (acquired on: 07/20/20 12:22:56)



Acoustic Velocity 1251.54 ft/s Joints counted 146
 Joints Per Second 19.7404 jts/sec Joints to liquid level 160.312
 Depth to liquid level 5081.88 ft Filter Width 16.8679 20.8679
 Automatic Collar Count Yes Time to 1st Collar 0.52 7.916

July 30, 2020

Collette Davis
SandRidge Exploration and Production LLC
123 ROBERT S. KERR AVE
OKLAHOMA CITY, OK 73102-6406

Re: Temporary Abandonment
API 15-077-22017-01-00
BOB 3508 1-4H
SE/4 Sec.04-35S-08W
Harper County, Kansas

Dear Collette Davis:

"Your temporary abandonment (TA) application for the well listed above has been approved. In accordance with K.A.R. 82-3-111 the TA status of this well will expire 07/30/2021.

- * If you return this well to service or plug it, please notify the District Office.
- * If you sell this well you are required to file a Transfer of Operator form, T-1.
- * If the well will remain temporarily abandoned, you must submit a new TA application, CP-111, before 07/30/2021.

You may contact me at the number above if you have questions.

Very truly yours,

Steve VanGieson"