

Randall Kilian Corporation

Geologist



**Certified Petroleum  
Geologist #3351  
License #224**

3951 Eveningglow Way  
Castle Rock, CO 80104

Phone: 720-733-0420

Cell: 785-635-1349

E-mail: rkgeo53@hotmail.com

## GEOLOGIST'S WELL REPORT

COMPANY JAMES F WILLIAMS ENTERPRISES, INC. (35220)

WELL Lambert #1

FIELD COOPER

LOCATION (legal) SE 1/4 NW NW SE

(footages) 2204' PSL & 2315' PEL

Section 5 TWP 10S RGE 20W

(Map) 3 mi S & 1/2 mi W of Palco, Ks.

COUNTY Rooks STATE Kansas

ELEVATION: 2251' K.B., 2243' G.L.

Depths measured from Kelly Bushing

A. P. I. NUMBER 15-163-24360

GEOLOGY BY Randall Kilian



# PERTINENT WELL DATA

CONTRACTOR Discovery Drilling (31548)

RIG #1 HYDRAULICS D-375 6x14x60

(Cliff Mayfield TP)

DRILL PIPE 4 1/2" X-H COLLARS 12 6x2 1/4"

CASING: SURFACE 8 5/8" @ 220' w/ 150 sx 80/20 Po

PRODUCTION 5 1/2" @ 3942' w/ 150 sx Common  
DV @ 2262' w/ 315 sx QMDC (335)

DRILLING FLUID. COMPANY Andy's Mud & Chemical Co.  
(Aaron Blew)

TYPE: Chemical

REMARKS: Full service

DRILL STEM TESTS: COMPANY Trilobite Testing Inc.  
(Spencer Staab)

NUMBER OF TESTS One (1)

ELECTIC LOGS: COMPANY Gemeni Wireline

DETAIL (5") 3250' - RTD

TYPE DI, Comp N-D, Micro

DRILLING TIME FROM 3250' TO RTD

SAMPLE TIME FROM 3250' TO RTD

SUPERVISION FROM 3250' TO RTD

VERTICAL DEVIATION 1/4" @ 220', 3/4" @ 3575',

PLUGGING REPORT 30 sx Rat, 15 sx Mouse

RESERVE PIT 650 bbls., Chl 48,000, Ca. 1680







# DRILL STEM TESTS

NO	INTERVAL	IFP/TIME	ISIP/TIME	FFP/TIME	FSIP/TIME	IHP/FHP	RECOVERY
1	Tor-C 3483- 3575'	19# 23# 5"	705# 60"	26# 40# 30"	574# 30"	1660# 1652#	60' Mud
2							
3							
4							
5							
6							
7							
8							

## MUD RECORD

CHK	DEPTH	WT	VIS	FIL	CHL	YP
1	3160'					
2	3252'	8.8	62	7.6	4.5#	20
3	3360'	8.6	61			
4	3575'	8.9	50	7.6	4.5#	11
5	3620'	8.8	49			
6	3651'	8.8	48	7.6	5.5#	13
7	3800'	8.8	48			
8	3920'	9.2	57			
9						
10						
11						

Displace  
LCM 3½#  
LCM 2½#  
LCM 2½#  
LCM 6#

## BIT RECORD

SIZE	MAKE	TYPE	DEPTHOUT	FEET	HOURS
12 ¼"	CTZ		220'	220'	2
7 7/8"	HTCo.	GX20G	3920'	3700'	73 3/4



# FORMATION TOPS & STRUCTURAL GEOLOGY

R 20 W

REFERRED TO:

A: SKELLY OIL CO.  
Beinke #1 NW NW SE

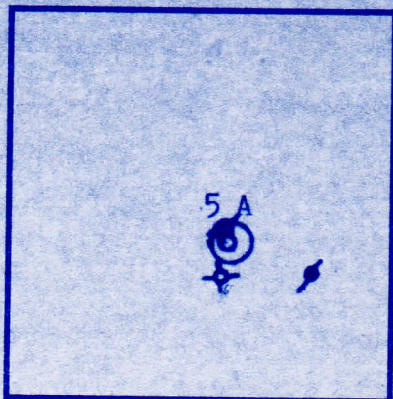
B: \_\_\_\_\_

C: \_\_\_\_\_

D: \_\_\_\_\_

E: \_\_\_\_\_

T  
10  
S



STRATIGRAPHIC MARKERS	SUBJECT WELL			STRUCTURAL POSITION			
	SAMPLES	E. LOGS	DATUM	A	B	C	D

Anhydrite	1764'	1762'	+ 489	+ 499			
Base	1805'	1797'	+ 454	+ 460			
Topeka	3288'	3286'	-1035	-1036			
Heeb. Sh.	3489'	3489'	-1238	-1237			
Toronto	3507'	3510'	-1259	-1258			
Lansing	3526'	3526'	-1275	-1275			
PKc.	3749'	3751'	-1500	-1501			
Smp Dolo.	3824'	3827'	-1576	-1573			
Arbuckle	3837'	3841'	-1590	-1586			
TD	3920'	3923'	-1672	-1602			
RTP	3920		-1669				

Pipe strap 1.17' long.

\*Structural position of subject well as compared to referre







LOGY

### SUMMARY

The Lambert #1 well was drilled with Discovery tools rig #1 beginning June 15, 2018 and drilled completed June 22, 2018.

The drill site is located 125' south of the Ske Beinke #1 abandon Arbuckle producer which was p in 1960. This well was plugged after water brok

DST #1 over the Toronto thru LKc C zone was a t test. The well ran about flat to the key well. DST #1, the well was TD'ed, logged, and pipe se further test and produce the well.

recommended perfs; Arb. 3844-48', Smp 3827-32',  
3720-24', G 3614-18, C 3568-  
A 3526-30, Toronto 3510-15.

Respectfully,

  
Randall Kilian

TION

E

well



Drilling  
ing was

lly Oil Co.  
ugged  
e in,

ight  
After  
t to

LKc K  
75'

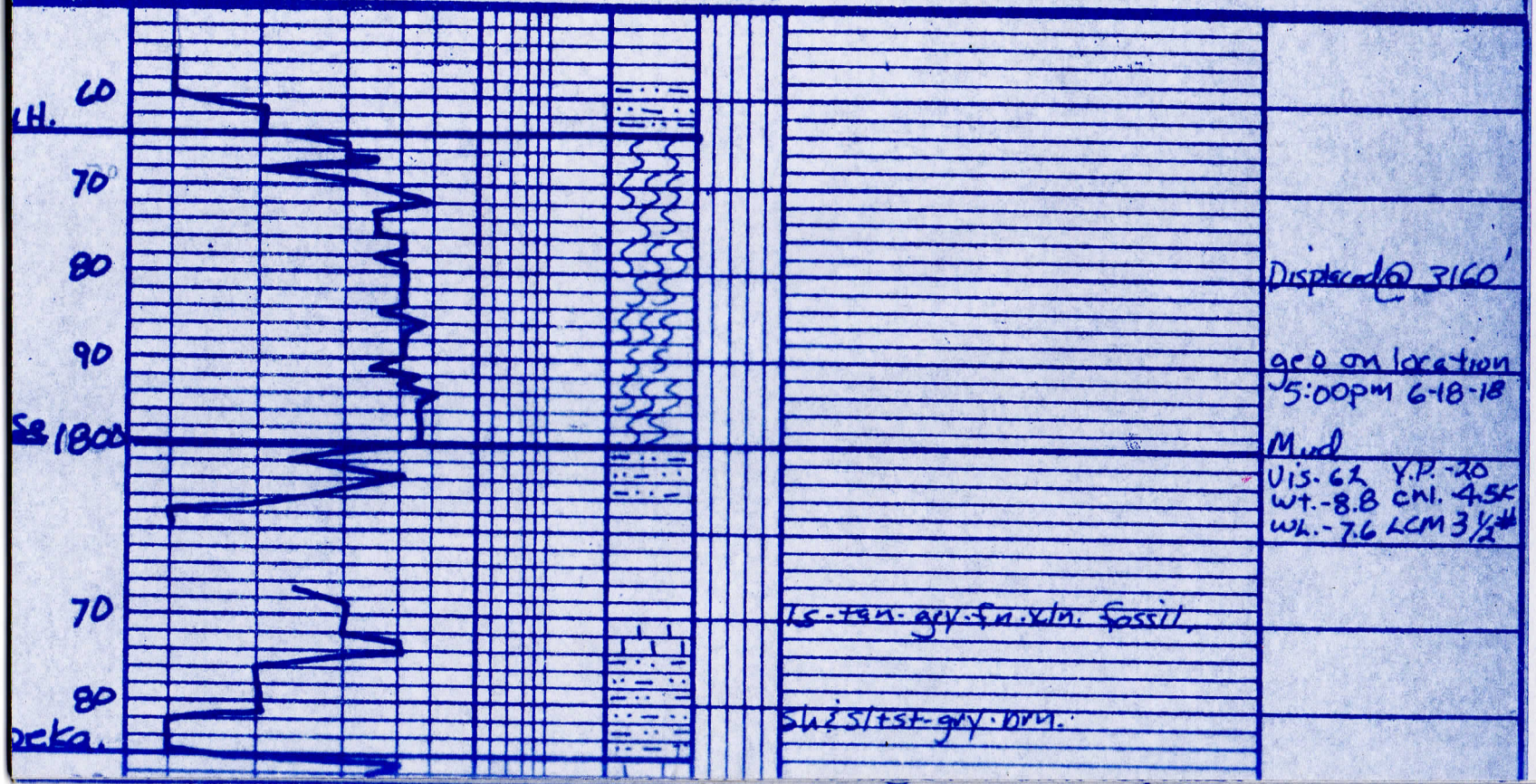
DRILLING TIME (min/ft)

1/2 1 2 3 4 5 6 7 8 9 10

POOR  
FAIR  
GOOD  
DST

LITHOLOGY (LAGGED)

REMARKS



Displaced @ 3160'

geo on location  
5:00pm 6-18-18

Mud  
vis. 62 Y.P. -20  
wt. -8.8 chl. 4.5K  
wk. -7.6 LCM 3 1/2 #

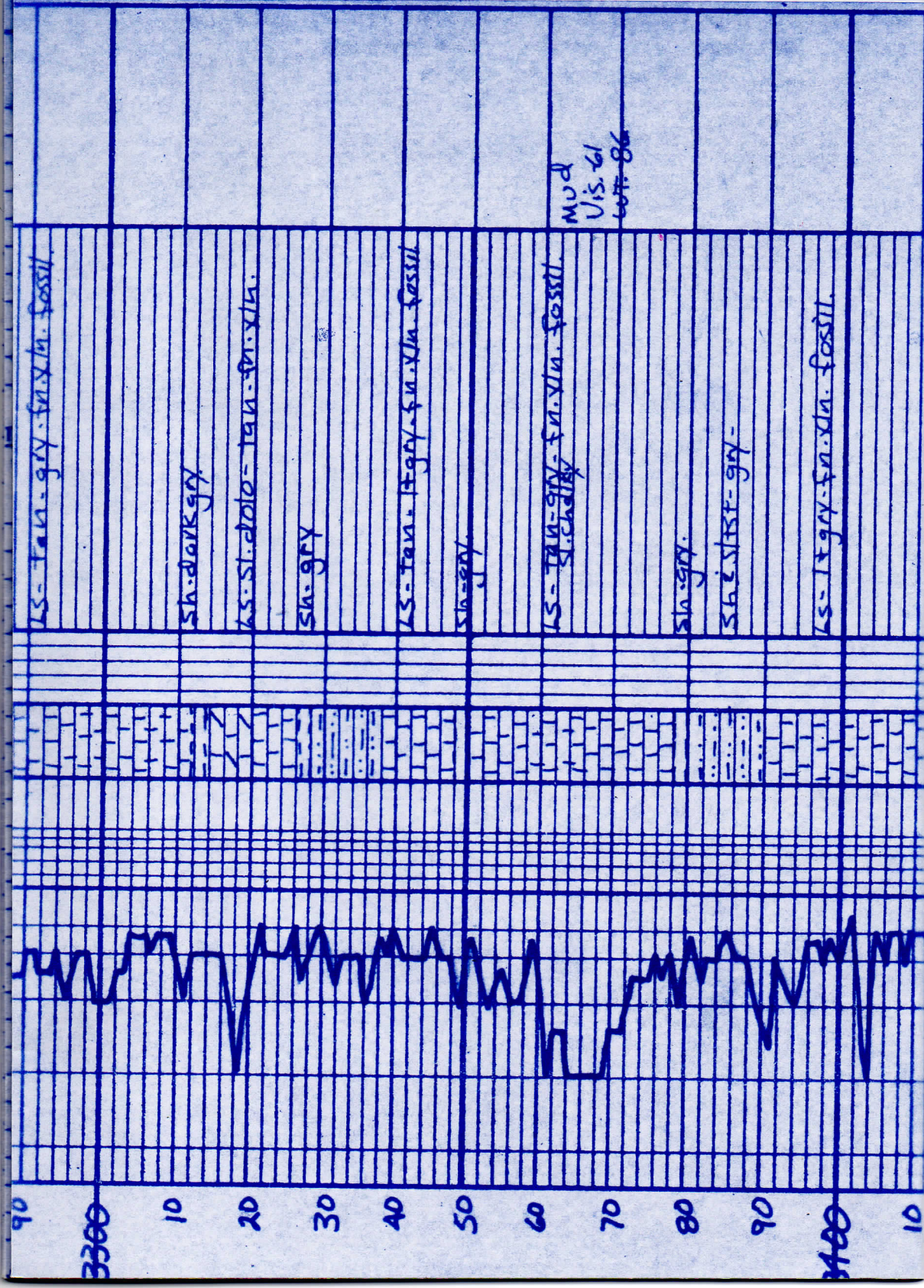
ls-fan-gry-fn. xln. fossil.

sh? sl+st-gry. dry.

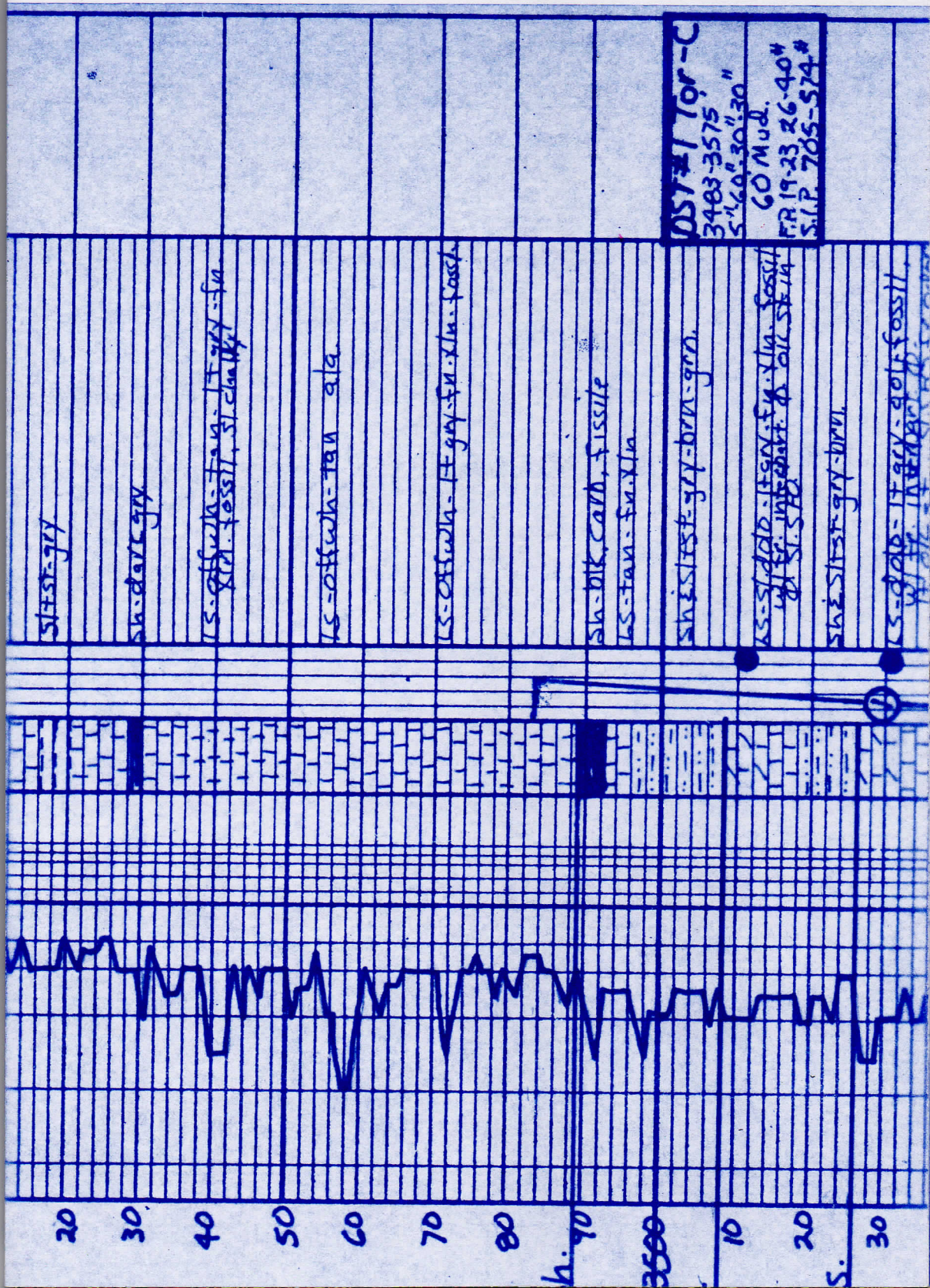
SS 1800

rock









sh. sst. - gry

sh. clay - gry

LS - off wh. - tan. - f. x. m. - fossil  
 sh. - clay - gry - f. x. m. - fossil

LS - off wh. - tan. - clay

LS - off wh. - f. x. m. - fossil

sh. blk. carb. - fissile

LS - tan. - f. x. m.

sh. sst. - gry - brn. - grn.

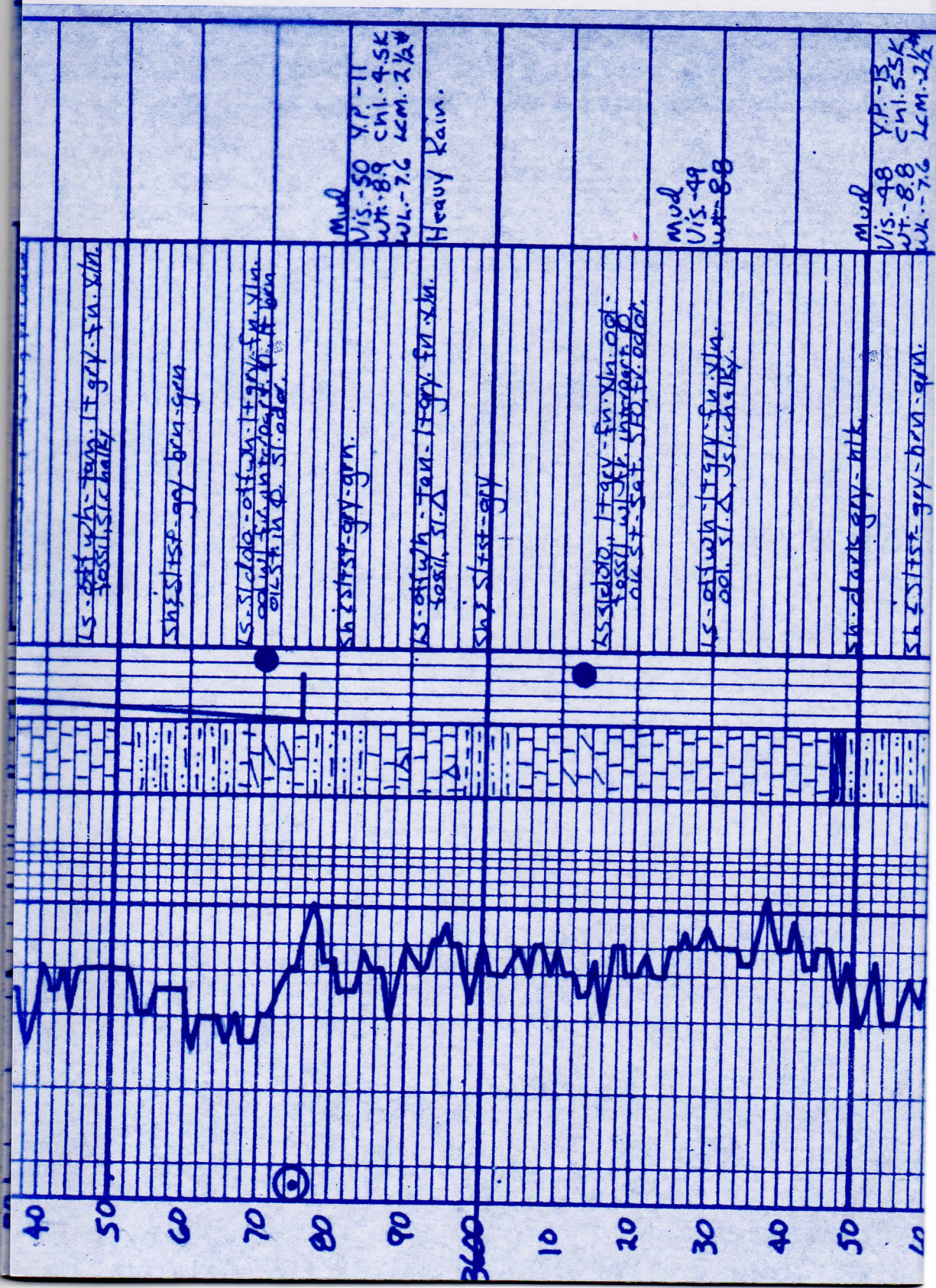
LS - sh. clay - f. x. m. - fossil  
 sh. - clay - gry - f. x. m. - fossil

sh. sst. - gry - brn.

LS - clay - f. x. m. - fossil  
 sh. - clay - gry - f. x. m. - fossil

DST #1 Top-C  
 3483-3575  
 5' 60' 30' 30"  
 60 Mud.  
 FR 19-23 26-40"  
 S.P. 705-574#





ls. off wh - tan. f. n. xln.  
fossil, s. cherty

sh. sst - gry - brn - grn

ls. s. clay - off wh. f. n. xln.  
off wh. f. n. xln. f. n. xln.  
off wh. f. n. xln. f. n. xln.

sh. sst - gry - grn.

ls. off wh - tan. f. n. xln.  
fossil, s. cherty

sh. sst - gry

ls. s. clay, f. n. xln. off.  
fossil, s. cherty, s. cherty  
off wh. f. n. xln. f. n. xln.

ls. off wh - tan. f. n. xln.  
off wh. f. n. xln. f. n. xln.

sh. clay - gry - blk.

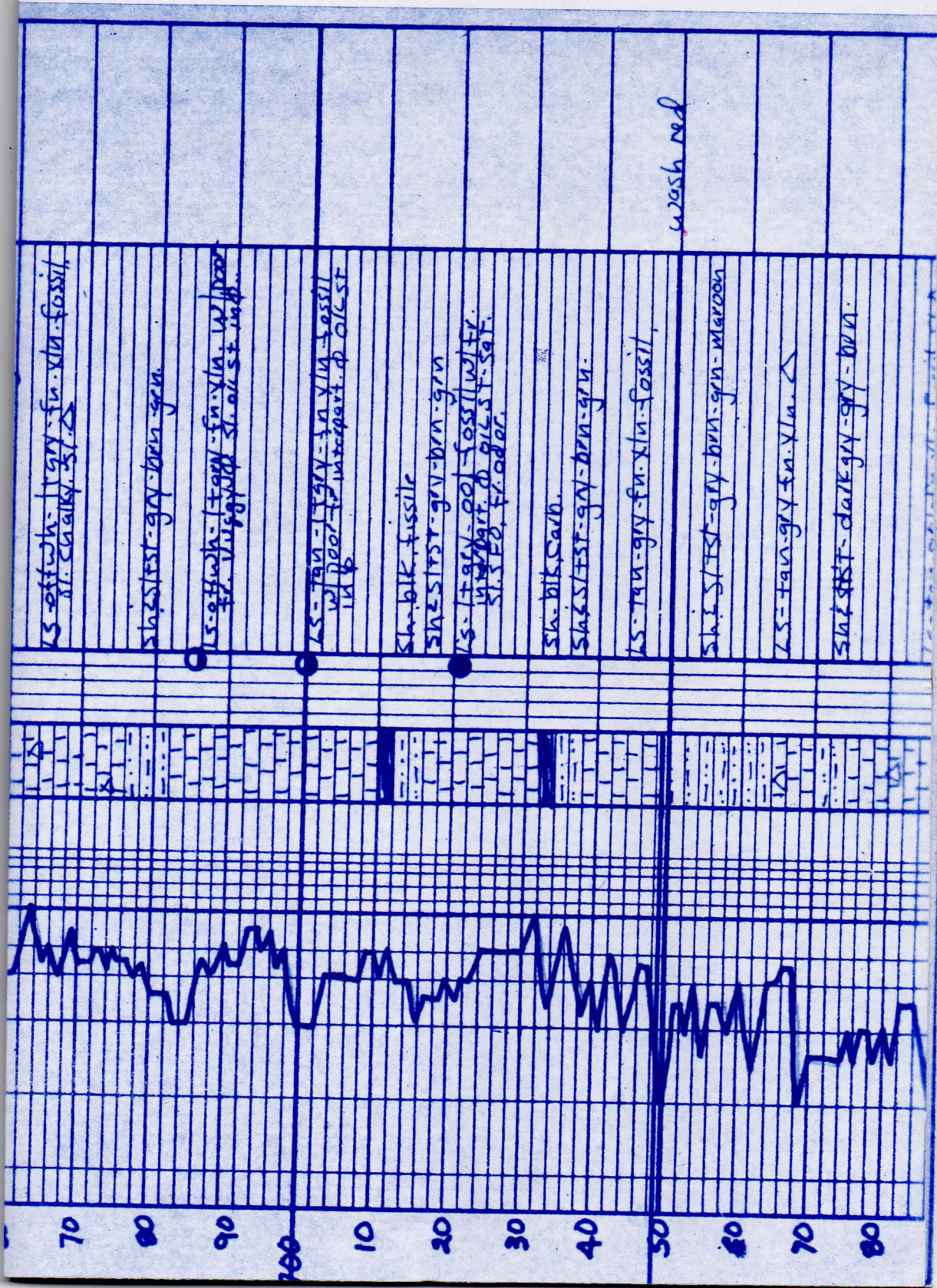
sh. sst - gry - brn - grn.

Mud  
Vis. 50 Y.P. - 11  
WT. 8.9 C.M. - 4.5K  
WL. - 7.6 L.C.M. - 2.1/2  
Heavy Rain.

Mud  
Vis. 49  
WT. 8.8

Mud  
Vis. 48 Y.P. - 13  
WT. 8.8 C.M. - 5.5K  
WL. - 7.6 L.C.M. - 2.1/2





LS - off wh - 1/2 gr - fu - xln - fossil  
 sh - chalky - 3/4

sh - st - gr - gn - brn - gn

LS - off wh - 1/2 gr - fu - xln - w/pebb  
 sh - v. fine - st - calc - wh

LS - tan - 1/2 gr - fu - xln - fossil  
 w/pebb - in part - p - calc - st

sh - blk - fossil  
 sh - st - gr - gn - brn - gn

LS - 1/2 gr - 1/2 fossil - w/pebb  
 sh - blk - calc - st - sat  
 sh - FE - fr. odor

sh - blk - carb.  
 sh - st - gr - gn - brn - gn

LS - tan - gr - fu - xln - fossil

wash red

sh - st - gr - gn - brn - gn - maroon

LS - tan - gr - fu - xln - >

sh - st - dark gray - gr - brn





thickest - dark gr. - gy. brn. - grn.

ss - gtz clear med grn, avg.  
10% ST. sh. sfo.

sh. sfo. gr. - brn. - grn.

ss - gtz - fn. grn. well worked,  
big st. sh. sfo. sl. color.

sh. grn - waxy, gtz grains

Data - 11 gty - fn. med via w/ fr. -  
10% sh. sfo. 8. gtz sfo.

Data via

Data - 14 gty - brn. - fn. - sh. w/ 10% sh. sfo. 8. barren.

Data via.

Data - offwh - brn. - fn. - sh. -  
mostly barren. sl. sfo.

Mud  
vis. - 48  
wt. - 88

Mix mud



-200



100. 11:30 PM  
6-20-16



Dobrota.



Mud. dan 3/4  
US-57  
WF-92  
LGM-6