

KANSAS CORPORATION COMMISSION
OIL & GAS CONSERVATION DIVISION

TEMPORARY ABANDONMENT WELL APPLICATION

OPERATOR: License#
Name:
Address 1:
Address 2:
City: State: Zip:
Contact Person:
Phone:
Contact Person Email:
Field Contact Person:
Field Contact Person Phone:

API No. 15-
Spot Description:
Sec. Twp. S. R.
GPS Location: Lat, Long
Datum: NAD27, NAD83, WGS84
County: Elevation:
Lease Name: Well #:
Well Type: Oil, Gas, OG, WSW, Other
SWD Permit #: ENHR Permit #:
Gas Storage Permit #:
Spud Date: Date Shut-In:

Table with 7 columns: Conductor, Surface, Production, Intermediate, Liner, Tubing. Rows include Size, Setting Depth, Amount of Cement, Top of Cement, Bottom of Cement.

Casing Fluid Level from Surface: How Determined? Date:
Casing Squeeze(s): to w / sacks of cement, to w / sacks of cement. Date:
Do you have a valid Oil & Gas Lease? Yes No
Depth and Type: Junk in Hole at Tools in Hole at Casing Leaks: Yes No Depth of casing leak(s):
Type Completion: ALT. I ALT. II Depth of: DV Tool: w / sacks of cement Port Collar: w / sack of cement
Packer Type: Size: Inch Set at: Feet
Total Depth: Plug Back Depth: Plug Back Method:

Geological Date:

Table with 4 columns: Formation Name, Formation Top, Formation Base, Completion Information. Rows 1 and 2.

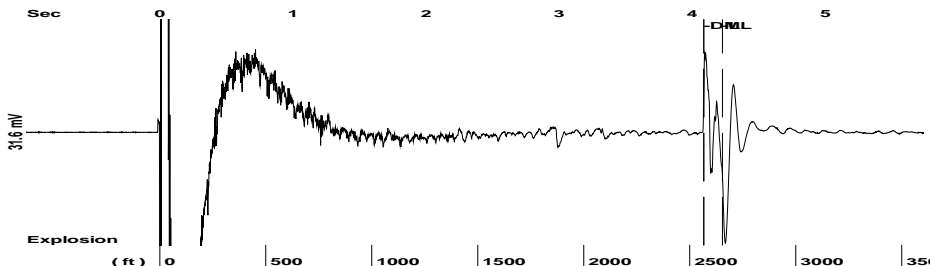
UNDER PENALTY OF PERJURY I HEREBY ATTEST THAT THE INFORMATION CONTAINED HEREIN IS TRUE AND CORRECT TO THE BEST OF MY KNOWLEDGE

Submitted Electronically

Do NOT Write in This Space - KCC USE ONLY
Date Tested: Results: Date Plugged: Date Repaired: Date Put Back in Service:
Review Completed by: Comments:
TA Approved: Yes Denied Date:

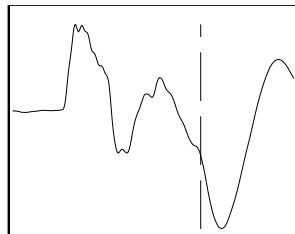
Mail to the Appropriate KCC Conservation Office:

Table with 2 columns: Office Address, Phone. Rows for District Office #1, #2, #3, #4.

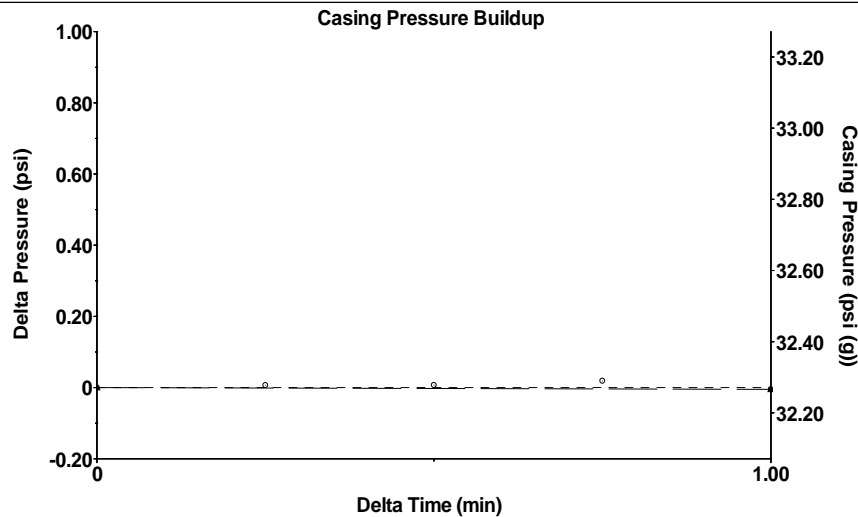


Time 4.227 sec  
 Joints 85.0608 Jts  
 Depth 2653.90 ft

Liquid Level Extrapolated from  
 Marker Selection of a Downhole Marker.

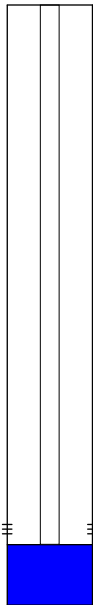


**Analysis Method: Down Hole Marker**



Change in Pressure -0.01 psi PT 9160  
 Change in Time 1.00 min Range 0 - ? psi

Production		Potential		Casing Pressure	
Oil	- * -	- * -	BBL/D	32.3	psi (g)
Water	- * -	- * -	BBL/D	Casing Pressure Buildup	
Gas	- * -	- * -	Mscf/D	-0.005	psi
IPR Method		Vogel		1.00	min
PBHP/SBHP		- * -		Gas/Liquid Interface Pressure	35.5 psi (g)
Production Efficiency		0.0		Liquid Level Depth	2653.90 ft
Oil	40 deg.API			Pump Intake Depth	2652.00 ft
Water	1.05 Sp.Gr.H2O			Formation Depth	2566.00 ft
Gas	0.75 Sp.Gr.AIR				
Acoustic Velocity	1255.69 ft/s				



Static  
 Oil Column Height  
 MD 0 ft  
 Water Column Height  
 MD - \* - ft  
 Static BHP  
 35.4 psi (g)

**Used Marker Analysis for Liquid Level depth determination**

August 04, 2020

Liv Adams  
XTO Energy Inc.  
210 PARK AVE STE 2350  
OKLAHOMA CITY, OK 73102-5683

Re: Temporary Abandonment  
API 15-055-00263-00-00  
JACKSON, AL 1-32  
NE/4 Sec.32-22S-32W  
Finney County, Kansas

Dear Liv Adams:

"Your temporary abandonment (TA) application for the well listed above has been approved. In accordance with K.A.R. 82-3-111 the TA status of this well will expire 08/04/2021.

- \* If you return this well to service or plug it, please notify the District Office.
- \* If you sell this well you are required to file a Transfer of Operator form, T-1.
- \* If the well will remain temporarily abandoned, you must submit a new TA application, CP-111, before 08/04/2021.

You may contact me at the number above if you have questions.

Very truly yours,

Michael Maier"