

KANSAS CORPORATION COMMISSION
OIL & GAS CONSERVATION DIVISION

TEMPORARY ABANDONMENT WELL APPLICATION

OPERATOR: License#
Name:
Address 1:
Address 2:
City: State: Zip:
Contact Person:
Phone:
Contact Person Email:
Field Contact Person:
Field Contact Person Phone:

API No. 15-
Spot Description:
Sec. Twp. S. R.
GPS Location: Lat: Long:
Datum: NAD27 NAD83 WGS84
County: Elevation:
Lease Name: Well #:
Well Type: Oil Gas OG WSW Other:
SWD Permit #: ENHR Permit #:
Gas Storage Permit #:
Spud Date: Date Shut-In:

Table with 7 columns: Conductor, Surface, Production, Intermediate, Liner, Tubing. Rows include Size, Setting Depth, Amount of Cement, Top of Cement, Bottom of Cement.

Casing Fluid Level from Surface: How Determined? Date:
Casing Squeeze(s): to w / sacks of cement, to w / sacks of cement. Date:
Do you have a valid Oil & Gas Lease? Yes No
Depth and Type: Junk in Hole at Tools in Hole at Casing Leaks: Yes No Depth of casing leak(s):
Type Completion: ALT. I ALT. II Depth of: DV Tool: w / sacks of cement Port Collar: w / sack of cement
Packer Type: Size: Inch Set at: Feet
Total Depth: Plug Back Depth: Plug Back Method:

Geological Data:

Table with 4 columns: Formation Name, Formation Top, Formation Base, Completion Information. Rows 1 and 2.

UNDER PENALTY OF PERJURY I HEREBY ATTEST THAT THE INFORMATION CONTAINED HEREIN IS TRUE AND CORRECT TO THE BEST OF MY KNOWLEDGE

Submitted Electronically

Form with fields: Do NOT Write in This Space - KCC USE ONLY, Date Tested, Results, Date Plugged, Date Repaired, Date Put Back in Service, Review Completed by, Comments, TA Approved: Yes Denied, Date.

Mail to the Appropriate KCC Conservation Office:

Table with 2 columns: Office Address, Phone. Rows for KCC District Office #1, #2, #3, #4.

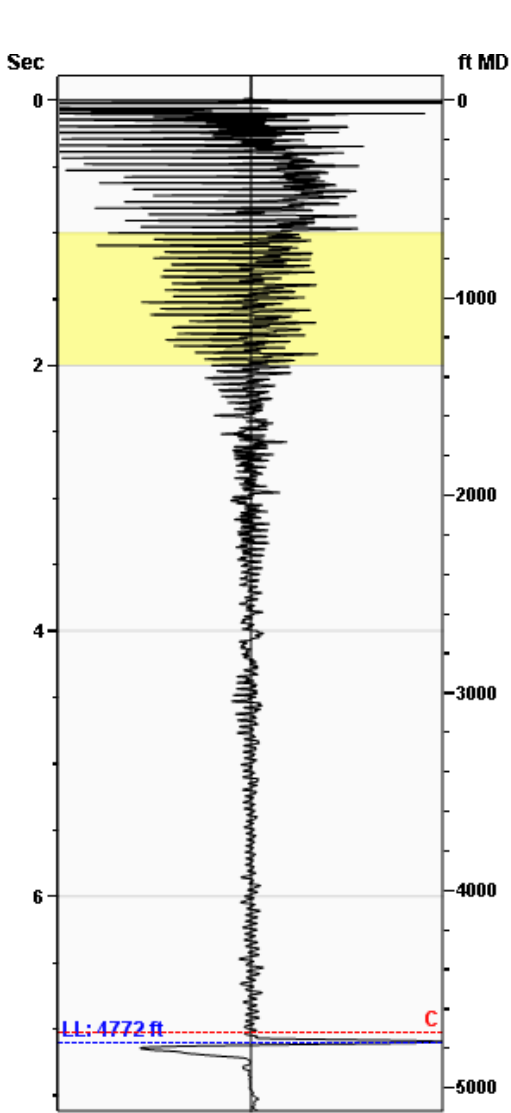


Liquid Level

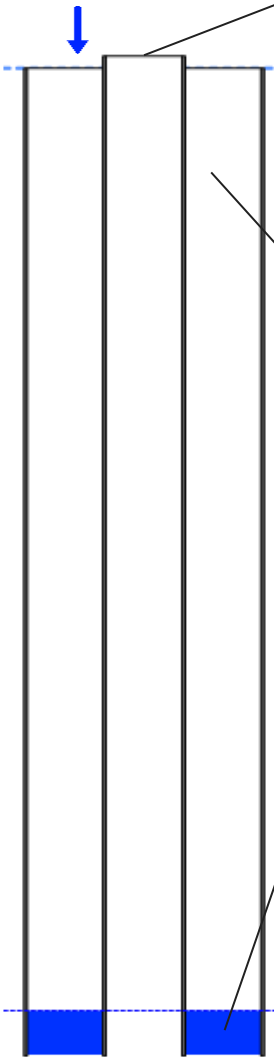
4772 ft MD

Fluid Above Tubing
Gas Free Above Tubing

** ft TVD
** ft TVD



Gun - WG 3243



Production

Date Entered	07/08/20		
	Current	Potential	
Oil	**	**	BBL/D
Water	**	**	BBL/D
Gas	**	**	Mscf/D
IPR Method	Vogel		
PBHP/SBHP	1.00		
Producing Efficiency	0.00%		

Casing Pressure

Pressure 438.4 psi (g)

Annular Gas Flow

Gas Flow ** Mscf/D

Fluid Properties

% Liquid Above Tubing 100.00%
% Liquid Below Tubing **

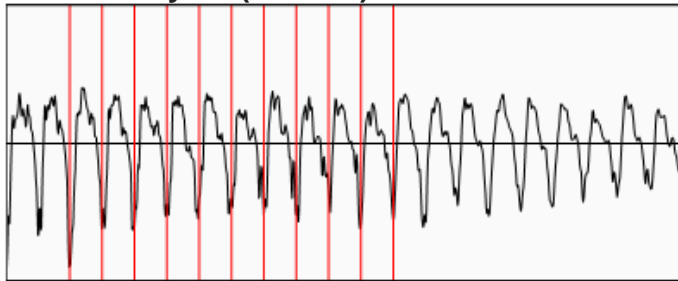
Depths

Tubing Depth 5000 ft
Formation Depth 0 ft

Wellbore Pressures

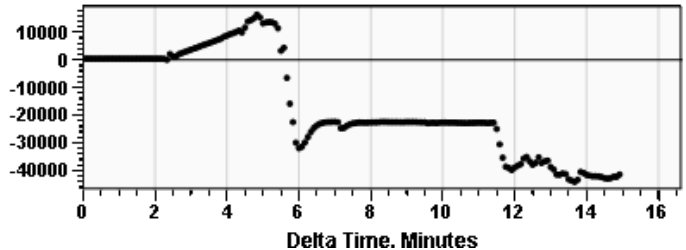
TIP **
PBHP **
SBHP **
Gas/Liq Interface **

Collar Analysis (Manual)



Average Acoustic Velocity 1344 ft/s
Average Joints Per Sec. 21.19 Jts/sec
Joints To Liquid 150.52 Jts

Casing Pressure Buildup



Casing Pressure 438.4 psi (g)
Buildup 0.0 psi (g)
Buildup Time 2 min 0 sec
Gas Gravity from Collar Analysis (Manual) 0.6212 Air = 1

Comments and Recommendations

Fluid Level Diagnostics LLC
603 S 6th St.
Kiowa KS, 67070
620-886-1816

August 04, 2020

Donna May-Murray
CMX, Inc.
9330 E CENTRAL SUITE 300
WICHITA, KS 67206-6610

Re: Temporary Abandonment
API 15-007-22499-00-01
BRUCE OWWO 1
NE/4 Sec.13-35S-14W
Barber County, Kansas

Dear Donna May-Murray:

"Your temporary abandonment (TA) application for the well listed above has been approved. In accordance with K.A.R. 82-3-111 the TA status of this well will expire 08/04/2021.

- * If you return this well to service or plug it, please notify the District Office.
- * If you sell this well you are required to file a Transfer of Operator form, T-1.
- * If the well will remain temporarily abandoned, you must submit a new TA application, CP-111, before 08/04/2021.

You may contact me at the number above if you have questions.

Very truly yours,

Michael Maier"