

Form	ACO1 - Well Completion
Operator	TDI, Inc.
Well Name	UNREIN 1
Doc ID	1417986

Casing

Purpose Of String	Size Hole Drilled	Size Casing Set	Weight	Setting Depth	Type Of Cement	Number of Sacks Used	Type and Percent Additives
Surface	12.25	8.625	23	1106	SMD	375	1/4# flo-seal, 3% cc, 2% gel

OPERATOR

Company: TDI, INC
Address: 1310 BISON ROAD
HAYS, KANSAS 67601-9696

Contact Geologist: TOM DENNING
Contact Phone Nbr: 785-628-2593
Well Name: UNREIN # 1
Location: NW SE SE SE, SEC.29-TWP14S-RGE17W
API: 15-051-26,920-00-00
Pool: WILDCAT
State: KANSAS
Field: UNNAMED
Country: USA



Scale 1:240 Imperial

Well Name: UNREIN # 1
Surface Location: NW SE SE SE, SEC.29-TWP14S-RGE17W
Bottom Location:
API: 15-051-26,920-00-00
License Number: 4767
Spud Date: 7/20/2018 Time: 5:00 PM
Region: ELLIS COUNTY
Drilling Completed: 7/26/2018 Time: 7:43 PM
Surface Coordinates: 625' FSL & 565' FEL
Bottom Hole Coordinates:
Ground Elevation: 1926.00ft
K.B. Elevation: 1936.00ft
Logged Interval: 2800.00ft To: 3550.00ft
Total Depth: 3550.00ft
Formation: CONGLOMERATE/ARBUCKLE
Drilling Fluid Type: CHEMICAL/FRESH WATER GEL

SURFACE CO-ORDINATES

Well Type: Vertical
Longitude: -99.2277252
Latitude: 38.8003456
N/S Co-ord: 625' FSL
E/W Co-ord: 565' FEL

LOGGED BY

Company: SOLUTIONS CONSULTING, INC.
Address: 108 W 35TH
HAYS, KS 67601

Phone Nbr: (785) 639-1337
Logged By: GEOLOGIST
Name: HERB DEINES

CONTRACTOR

Contractor: SOUTHWIND DRILLING, INC.
Rig #: 8
Rig Type: MUD ROTARY
Spud Date: 7/20/2018 Time: 5:00 PM
TD Date: 7/26/2018 Time: 7:43 PM

ELEVATIONS

K.B. Elevation: 1936.00ft
K.B. to Ground: 10.00ft

Ground Elevation: 1926.00ft

NOTES

RECOMMENDATION TO PLUG AND ABANDON WELL BASED ON NEGATIVE RESULTS OF DST # 1 AND LOG ANALYSIS.

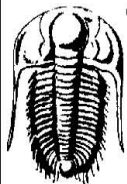
OPEN HOLE LOGGING BY PIONEER ENERGY SERVICES: DUAL INDUCTION LOG, DUAL COMPENSATED POROSITY LOG, MICRORESISTIVITY LOG.

DRILL STEM TESTING BY TRILOBITE TESTING INC: ONE (1) CONVENTIONAL TEST.

	UNREIN # 1	MILLER-LEIKER #1-28	LEIKER #1-32
	NW SE SE SE	NE NE SW NW	SW SE NE NE
	SEC.29-14S-17W	SEC.28-14-17W	SEC.32-14S-17W
	1936'KB	KB 1965'	KB 1934'
	LOG TOPS		
Anhydrite top	1103 +833	+ 842	+ 837
Anhydrite base	1140 +796	+ 803	+ 801
Topeka	2948-1012	-1004	-1009
Heebner Sh.	3169-1233	-1227	-1232
Toronto	3189-1253	-1246	-1251
LKC	3216-1280	-1273	-1279
BKC	3444-1508	-1499	-1508
Arbuckle	NOT REACHED	-1525	-1552
RTD	3550-1614	-1630	-1656

SUMMARY OF DAILY ACTIVITY

7-20-18	RU, spud 5:00 PM, drilling
7-21-18	865', drill to 1107', set 8 5/8" surface casing to 1106' w/ 375 sxs
	SMD, slope ¾ degree, plug down 9:15 PM, WOC
7-22-18	1107', WOC, drill plug at 9:15 AM
7-23-18	1914', drilling
7-24-18	2505', drilling, displaced 2676' to 2726'
7-25-18	3125', drilling, CFS 3200', short trip 15 stands, CFS 3255', CFS
	3325', TOWB, DST # 1 3228' to 3325' "C" to "G", slope 1 degree
7-26-18	3333' finish DST # 1, TIWB, CFS 3485', CFS 3495', RTD 3550'
	@7:43PM, CCH, TOWB, logs
7-27-18	3550', LDDP, plug and abandon well



TRILOBITE
TESTING, INC.

DRILL STEM TEST REPORT

TDI, Inc.

1310 Bison Rd.
Hays, KS 67601

ATTN: Herb Deines

29-14S-17W Ellis, KS

Unrein #1

Job Ticket: 63133

DST#: 1

Test Start: 2018.07.25 @ 22:40:00

GENERAL INFORMATION:

Formation: **LKC "C-G"**

Deviated: No Whipstock: ft (KB)

Time Tool Opened: 00:52:30

Time Test Ended: 04:26:30

Test Type: Conventional Bottom Hole (Initial)

Tester: Brannan Lonsdale

Unit No: 73

Interval: 3228.00 ft (KB) To 3325.00 ft (KB) (TVD)

Total Depth: 3325.00 ft (KB) (TVD)

Hole Diameter: 7.88 inches Hole Condition: Fair

Reference Elevations: 1936.00 ft (KB)

1926.00 ft (CF)

KB to GR/CF: 10.00 ft

Serial #: 6753 Outside

Press@RunDepth: 25.64 psig @ 3229.00 ft (KB)

Start Date: 2018.07.25

End Date:

2018.07.26

Capacity: 8000.00 psig

Last Calib.: 2018.07.26

Start Time: 22:40:05

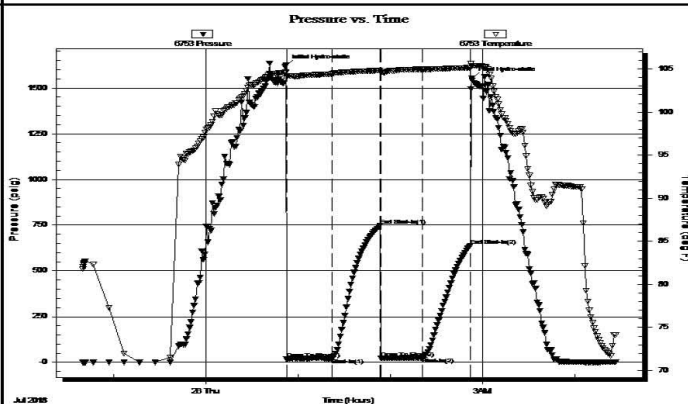
End Time:

04:26:29

Time On Btm: 2018.07.26 @ 00:52:00

Time Off Btm: 2018.07.26 @ 02:53:00

TEST COMMENT: 30- IF- Slowly built to 1"
30- IS- No blow
30- FF- No blow
30- FS- No blow



PRESSURE SUMMARY

Time (Min.)	Pressure (psig)	Temp (deg F)	Annotation
0	1623.37	104.60	Initial Hydro-static
1	17.11	104.21	Open To Flow (1)
30	21.70	104.45	Shut-In(1)
62	746.76	104.83	End Shut-In(1)
62	23.64	104.65	Open To Flow (2)
89	25.64	104.98	Shut-In(2)
120	638.05	105.15	End Shut-In(2)
121	1552.73	105.39	Final Hydro-static

Recovery

Length (ft)	Description	Volume (bbl)
20.00	M	0.28

Gas Rates

Choke (inches)	Pressure (psig)	Gas Rate (Mcf/d)
----------------	-----------------	------------------

ROCK TYPES

Cht

Cht vari

Chtcongl

Lmst fw<7

Lmst fw7>

shale, gry

shale, grn

shale, red

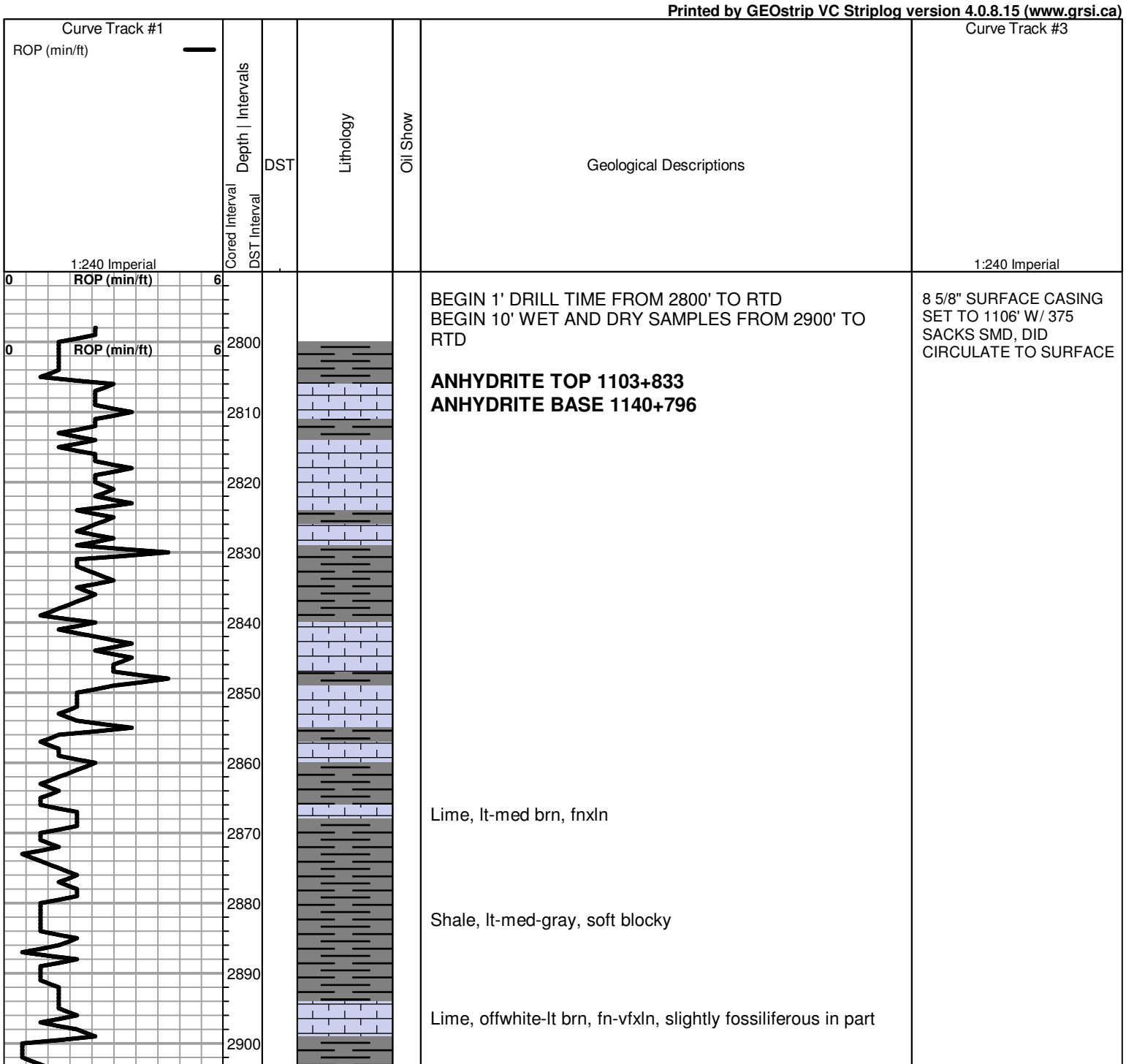
Carbon Sh

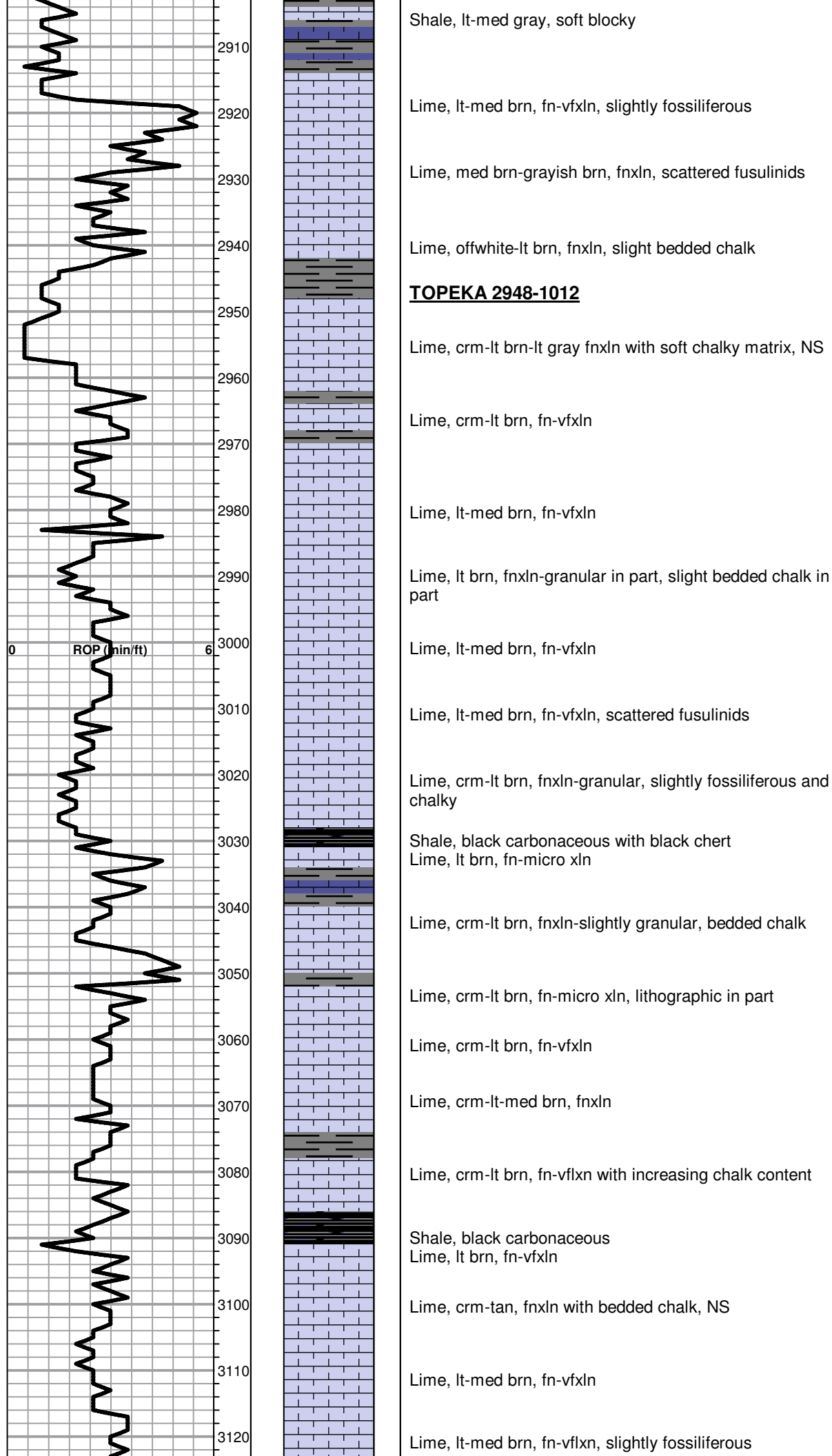
ACCESSORIES

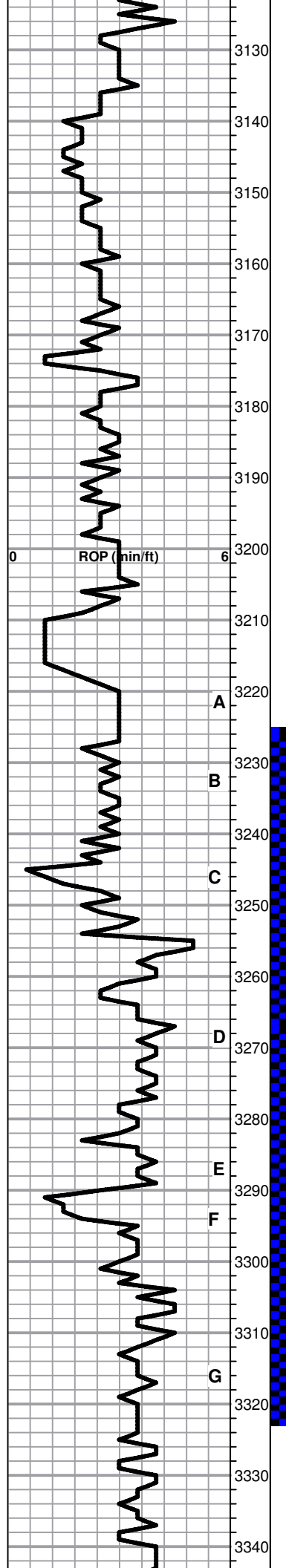
FOSSIL

Oolite

Oomoldic







Lime, crm-lt brn, fn-vfxln, slightly granular in part with scattered fusulinids

Lime, crm-lt brn, fn-vfxln

Lime, crm-lt brn, fnxln-granular, NS

Lime, crm-lt brn, fnxln

HEEBNER SHALE 3169-1233

Shale, black carbonaceous, fissile, blocky
Lime, lt brn, fn-vfxln

Shale, lime green, soft mud

TORONTO 3189-1253

D Lime, white-crm, fn-micro xln, few chips with dry, flaky gilsonite, NFO, no odor, very lt wet cut

Lime, lt-med brn, fn-vfxln

Lime, med gray to reddish brn

LKC 3216-1280

Lime, crm-lt brn, fn-vfxln, NS

Lime, lt-med brn-lt grayish brn, fn-vfxln

Shale, lt-med gray, soft blocky , slightly pyritic with clusters

C Lime, crm-tan, fnxln with cemented oolites and oomolds with trace of lt spotty staining, no odor, NFO

Lime, lt brn, fnxln

Lime, crm-lt brn, fnxln with spotty stain in part, NFO, no odor

D Lime, crm-lt brn, fn-vfxln

E Shale, black carbonaceous
Lime, lt gray, fnxln

F Lime, crm-tan, fnlxn, brittle, granular in part, oolitic and oomoldic, spotty staining, NFO, no odor

Lime, crm-tan, fnxln with slight bedded chalk

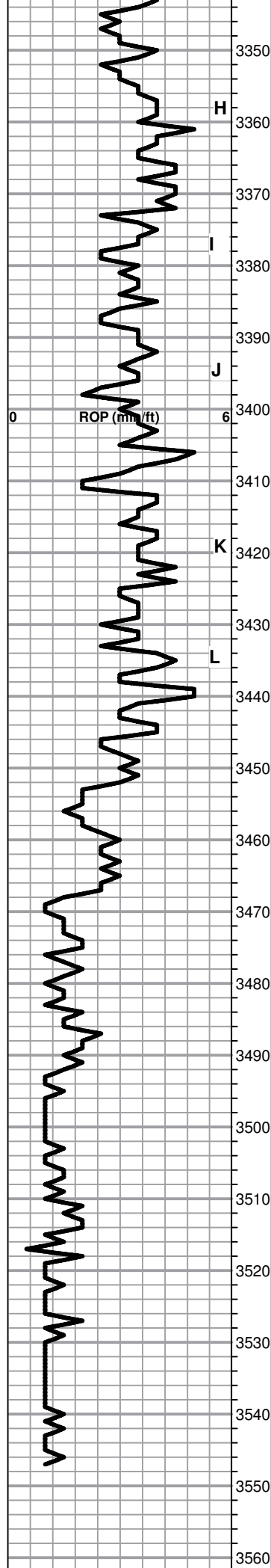
G Lime, crm-tan, fn-vfxln

Lime, crm-tan, fn-vfxln

Lime, crm-lt brn, fn-vfxln with microxln in part

Shale, black carbonaceous
Lime, med brn, fn-micro xln

DST # 1 TEST SUMMARY
3228'-3325' CORRECTED
TO 3325'-3322' TO
REFLECT 3' CORRECTION
IN DRILL TIME



Lime crm-lt brn, fn-vfxln, trace of lt staining in poorly developed porosity system, NFO, no odor

Lime, crm, fn-micro xln

Lime, crm-lt brn, fn-micro xln

Lime, crm-lt brn, fn-micro xln

Lime, crm-lt brn,, fn-vfxln, lt odor, NFO

Lime, crm-lt brn, fn-micro xln

Lime, crm-lt brn, fn-micro xln

Lime, lt-med brn, fn-vfxln

Lime, crm-med brn, fn-vfxln

Lime, lt brn-med grayish brn, fnxln

BKC 3444-1508

Shale, reddish brn, blocky

Lime, lt brn-lt grayish brn, fnxln, bedded chalk in part

Shale, red wash with vari colored shales

Chert, white-vari colored, fresh,sharp, NS

Chert, white with clastic lime, very little to no red shale content

Chert white-tan, fresh, sharp, NS

Chert, white-tan, fresh, sharp with clastic lime mix, NS

Shale, med-dark gray to dark reddish brn, firm waxy

Shale and chert, white-tan

Shale and chert, white-tan, no dolomite found in samples

RTD 3550-1614 LTD 3448-1612

1ST PLUG @1150 W/
50SX
2ND PLUG@475' W/80
SXS
3RD PLUG@40' W/ 10
SXS
RATHOLE W/30 SXS
MOUSEHOLE W/ 15 SXS

[illegible]

JOB LOG

SWIFT Services, Inc.

DATE

21 Jul 18

PAGE NO.

1

CUSTOMER

TDI

WELL NO.

1

LEASE

Unrein

JOB TYPE

Cement deep surface

TICKET NO.

31566

CHART NO.	TIME	RATE (BPM)	VOLUME (BBL) (GAL)	PUMPS		PRESSURE (PSI)		DESCRIPTION OF OPERATION AND MATERIALS
				T	C	TUBING	CASING	
								375 sk SMD cement w/ 1/4" floccs
								8 1/2" x 23" casing TD 1107 Byfile plot 1063'
								Centralizer 1, 3, 13 25 jts
	1500							on loc TRK 114
	1715							start 8 1/2" x 23" casing in well
	1945							circulate well
	2015	5	20				200	pump 20 bbl RCL flush
	2030	5					200	mix SMD cement 125 sk @ 1.2 ppg 100 sk 125 ppg 25 sk 13.5 ppg 7.5 sk 14.5 ppg <u>375 sk total</u>
		5						
		5						
		4 1/2					200	
			155 total				200	
	2047							Drop plug
								wash out pump & line
	2052	6					200	Displace plug
		5	66				50	→ cement to surface
→	2115	5	68				900	LAND plug (9:15 PM) {250 sk to pit}
								shot in 8 1/2"
	2120							Release pump to truck
								Wash truck
								Rock up
	2150							job complete
								Thanks
								Blaine, Flack & Russell

GLOBAL OIL FIELD SERVICES, LLC

3426

REMIT TO 24 S. Lincoln
Russell, KS 67665

SERVICE POINT:

Russell KS

DATE 7-27-10	SEC 29	TWP. 14S	RANGE 17W	CALLED OUT	ON LOCATION	JOB START	JOB FINISH 10:30 AM
LEASE Unrein	WELL # 1	LOCATION 2 East 1/2 Sec 17W 14S			COUNTY Ellis	STATE KS	
OLD OR NEW (CIRCLE ONE)							

CONTRACTOR Southwind Drilling Rig 48
TYPE OF JOB Rotary plug
HOLE SIZE 7 7/8" T.D. 3550'
CASING SIZE DEPTH
TUBING SIZE DEPTH
DRILL PIPE DEPTH
TOOL DEPTH
PRES. MAX. MINIMUM
MEAS. LINE SHOE JOINT
CEMENT LEFT IN CSG.
PERFS
DISPLACEMENT

EQUIPMENT

PUMP TRUCK CEMENTER Cody
911 HELPER Brad
BULK TRUCK
409 DRIVER Tony L
BULK TRUCK
DRIVER

REMARKS:

1150' 50SV
475' 40SV
90' 10SV wiper plug
Pat 30SV
Mase 15SV

CHARGE TO: TPI INC
STREET
CITY STATE ZIP

Global Oil Field Services, LLC

You are hereby requested to rent cementing equipment and furnish cementer and helper(s) to assist owner or contractor to do work as is listed. The above work was done to satisfaction and supervision of owner agent or contractor. I have read and understand the "GENERAL TERMS AND CONDITIONS" listed on the reverse side.

PRINTED NAME

SIGNATURE

William L. L...

OWNER

TPI INC

CEMENT

AMOUNT ORDERED

1855x 60, 40 P02
4 1/2 Gal + 1/2 gal Fluid Seal

COMMON	@	
POZMIX	@	
GEL	@	
CHLORIDE	@	
ASC	@	
	@	
	@	
	@	
	@	
	@	
	@	
	@	
HANDLING	@	
MILEAGE		

TOTAL

SERVICE

DEPTH OF JOB	
PUMP TRUCK CHARGE	
EXTRA FOOTAGE	@
MILEAGE	@
MANIFOLD	@
	@
	@

TOTAL

PLUG & FLOAT EQUIPMENT

	@	
	@	
	@	
	@	
	@	

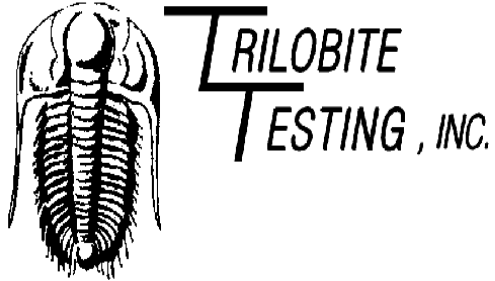
TOTAL

SALES TAX (If Any)

TOTAL CHARGES

DISCOUNT

IF PAID IN 30 DAYS



DRILL STEM TEST REPORT

Prepared For: **TDI, Inc.**

1310 Bison Rd.
Hays, KS 67601

ATTN: Herb Deines

Unrein #1

29-14S-17W Ellis,KS

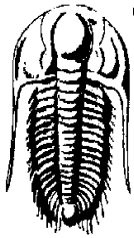
Start Date: 2018.07.25 @ 22:40:00

End Date: 2018.07.26 @ 04:26:30

Job Ticket #: 63133 DST #: 1

Trilobite Testing, Inc
1515 Commerce Parkway Hays, KS 67601
ph: 785-625-4778 fax: 785-625-5620

Printed: 2018.07.27 @ 10:26:18



**TRILOBITE
TESTING, INC.**

DRILL STEM TEST REPORT

TDI, Inc.

1310 Bison Rd.
Hays, KS 67601

ATTN: Herb Deines

29-14S-17W Ellis, KS

Unrein #1

Job Ticket: 63133

DST#: 1

Test Start: 2018.07.25 @ 22:40:00

GENERAL INFORMATION:

Formation: **LKC "C-G"**

Deviated: No Whipstock: ft (KB)

Time Tool Opened: 00:52:30

Time Test Ended: 04:26:30

Test Type: Conventional Bottom Hole (Initial)

Tester: Brannan Lonsdale

Unit No: 73

Interval: 3228.00 ft (KB) To 3325.00 ft (KB) (TVD)

Total Depth: 3325.00 ft (KB) (TVD)

Hole Diameter: 7.88 inches Hole Condition: Fair

Reference Elevations: 1936.00 ft (KB)

1926.00 ft (CF)

KB to GR/CF: 10.00 ft

Serial #: 6753 Outside

Press@RunDepth: 25.64 psig @ 3229.00 ft (KB)

Start Date: 2018.07.25

End Date:

2018.07.26

Start Time: 22:40:05

End Time:

04:26:29

Capacity: 8000.00 psig

Last Calib.: 2018.07.26

Time On Btm: 2018.07.26 @ 00:52:00

Time Off Btm: 2018.07.26 @ 02:53:00

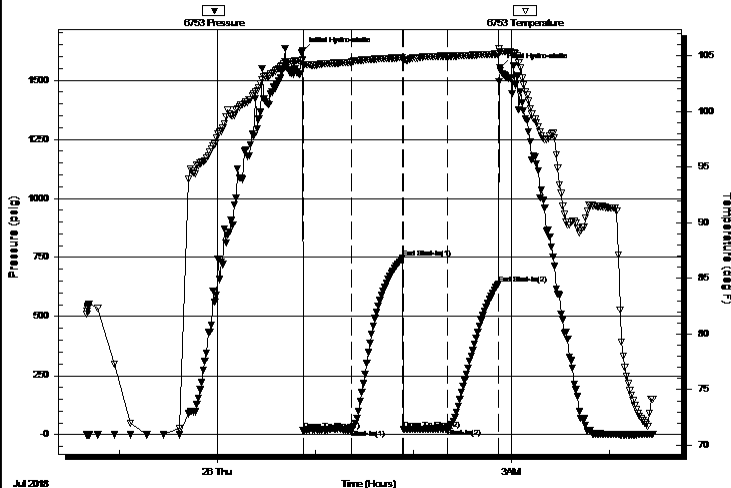
TEST COMMENT: 30- IF- Slowly built to 1"

30- IS- No blow

30- FF- No blow

30- FSI- No blow

Pressure vs. Time



PRESSURE SUMMARY

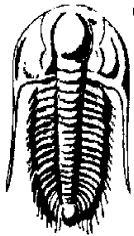
Time (Min.)	Pressure (psig)	Temp (deg F)	Annotation
0	1623.37	104.60	Initial Hydro-static
1	17.11	104.21	Open To Flow (1)
30	21.70	104.45	Shut-In(1)
62	746.76	104.83	End Shut-In(1)
62	23.64	104.65	Open To Flow (2)
89	25.64	104.98	Shut-In(2)
120	638.05	105.15	End Shut-In(2)
121	1552.73	105.39	Final Hydro-static

Recovery

Length (ft)	Description	Volume (bbl)
20.00	M	0.28

Gas Rates

	Choke (inches)	Pressure (psig)	Gas Rate (Mcf/d)
--	----------------	-----------------	------------------



TRILOBITE
TESTING, INC.

DRILL STEM TEST REPORT

TDI, Inc.

1310 Bison Rd.
Hays, KS 67601

ATTN: Herb Deines

29-14S-17W Ellis, KS

Unrein #1

Job Ticket: 63133

DST#: 1

Test Start: 2018.07.25 @ 22:40:00

GENERAL INFORMATION:

Formation: **LKC "C-G"**

Deviated: No Whipstock: ft (KB)

Time Tool Opened: 00:52:30

Time Test Ended: 04:26:30

Test Type: Conventional Bottom Hole (Initial)

Tester: Brannan Lonsdale

Unit No: 73

Interval: 3228.00 ft (KB) To 3325.00 ft (KB) (TVD)

Reference Elevations: 1936.00 ft (KB)

Total Depth: 3325.00 ft (KB) (TVD)

1926.00 ft (CF)

Hole Diameter: 7.88 inches Hole Condition: Fair

KB to GR/CF: 10.00 ft

Serial #: 6771 Inside

Press@RunDepth: psig @ 3229.00 ft (KB)

Capacity: 8000.00 psig

Start Date: 2018.07.25

End Date:

2018.07.26

Last Calib.:

2018.07.26

Start Time: 22:40:17

End Time:

04:26:52

Time On Btm:

Time Off Btm:

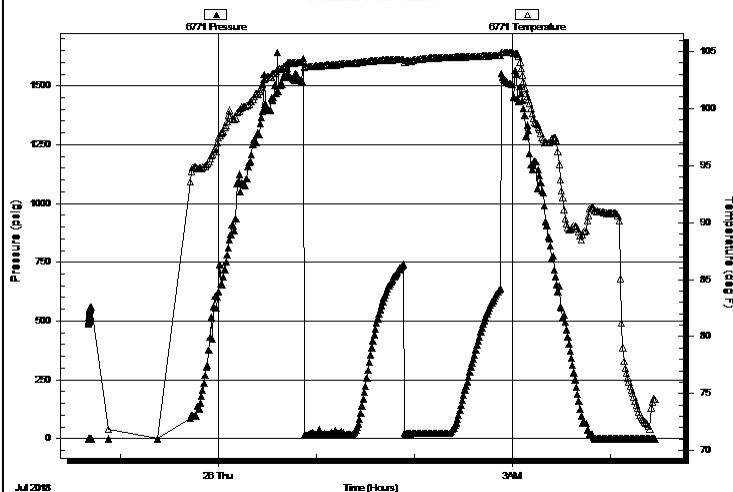
TEST COMMENT: 30- IF- Slowly built to 1"

30- IS- No blow

30- FF- No blow

30- FSI- No blow

Pressure vs. Time



PRESSURE SUMMARY

Time (Min.)	Pressure (psig)	Temp (deg F)	Annotation
-------------	-----------------	--------------	------------

Recovery

Length (ft)	Description	Volume (bbl)
20.00	M	0.28

Gas Rates

	Choke (inches)	Pressure (psig)	Gas Rate (Mcf/d)
--	----------------	-----------------	------------------



TRILOBITE
TESTING, INC.

DRILL STEM TEST REPORT

TOOL DIAGRAM

TDI, Inc.

29-14S-17W Ellis, KS

1310 Bison Rd.
Hays, KS 67601

Unrein #1

Job Ticket: 63133

DST#: 1

ATTN: Herb Deines

Test Start: 2018.07.25 @ 22:40:00

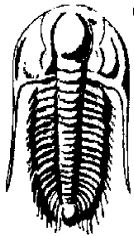
Tool Information

Drill Pipe:	Length:	3242.00 ft	Diameter:	3.82 inches	Volume:	45.96 bbl	Tool Weight:	2000.00 lb
Heavy Wt. Pipe:	Length:	ft	Diameter:	inches	Volume:	- bbl	Weight set on Packer:	25000.00 lb
Drill Collar:	Length:	0.00 ft	Diameter:	2.25 inches	Volume:	0.00 bbl	Weight to Pull Loose:	55000.00 lb
					Total Volume:	- bbl	Tool Chased	0.00 ft
Drill Pipe Above KB:		34.00 ft					String Weight: Initial	47000.00 lb
Depth to Top Packer:		3228.00 ft					Final	47000.00 lb
Depth to Bottom Packer:		ft						
Interval between Packers:		97.00 ft						
Tool Length:		117.00 ft						
Number of Packers:		2	Diameter:	6.75 inches				
Tool Comments:								

Tool Description

Tool Description	Length (ft)	Serial No.	Position	Depth (ft)	Accum. Lengths
Change Over Sub	1.00			3209.00	
Shut In Tool	5.00			3214.00	
Hydraulic tool	5.00			3219.00	
Packer	5.00			3224.00	20.00 Bottom Of Top Packer
Packer	4.00			3228.00	
Stubb	1.00			3229.00	
Recorder	0.00	6771	Inside	3229.00	
Recorder	0.00	6753	Outside	3229.00	
Perforations	28.00			3257.00	
Change Over Sub	1.00			3258.00	
Drill Pipe	63.00			3321.00	
Change Over Sub	1.00			3322.00	
Bullnose	3.00			3325.00	97.00 Bottom Packers & Anchor

Total Tool Length: 117.00



TRILOBITE
TESTING, INC.

DRILL STEM TEST REPORT

FLUID SUMMARY

TDI, Inc.

29-14S-17W Ellis, KS

1310 Bison Rd.
Hays, KS 67601

Unrein #1

Job Ticket: 63133

DST#: 1

ATTN: Herb Deines

Test Start: 2018.07.25 @ 22:40:00

Mud and Cushion Information

Mud Type: Gel Chem

Mud Weight: 9.00 lb/gal

Viscosity: 59.00 sec/qt

Water Loss: 6.39 in³

Resistivity: ohm.m

Salinity: 5900.00 ppm

Filter Cake: inches

Cushion Type:

Cushion Length:

Cushion Volume:

Gas Cushion Type:

Gas Cushion Pressure:

Oil API:

Water Salinity:

deg API

ppm

ft

bbl

psig

Recovery Information

Recovery Table

Length ft	Description	Volume bbl
20.00	M	0.284

Total Length: 20.00 ft

Total Volume: 0.284 bbl

Num Fluid Samples: 0

Num Gas Bombs: 0

Serial #:

Laboratory Name:

Laboratory Location:

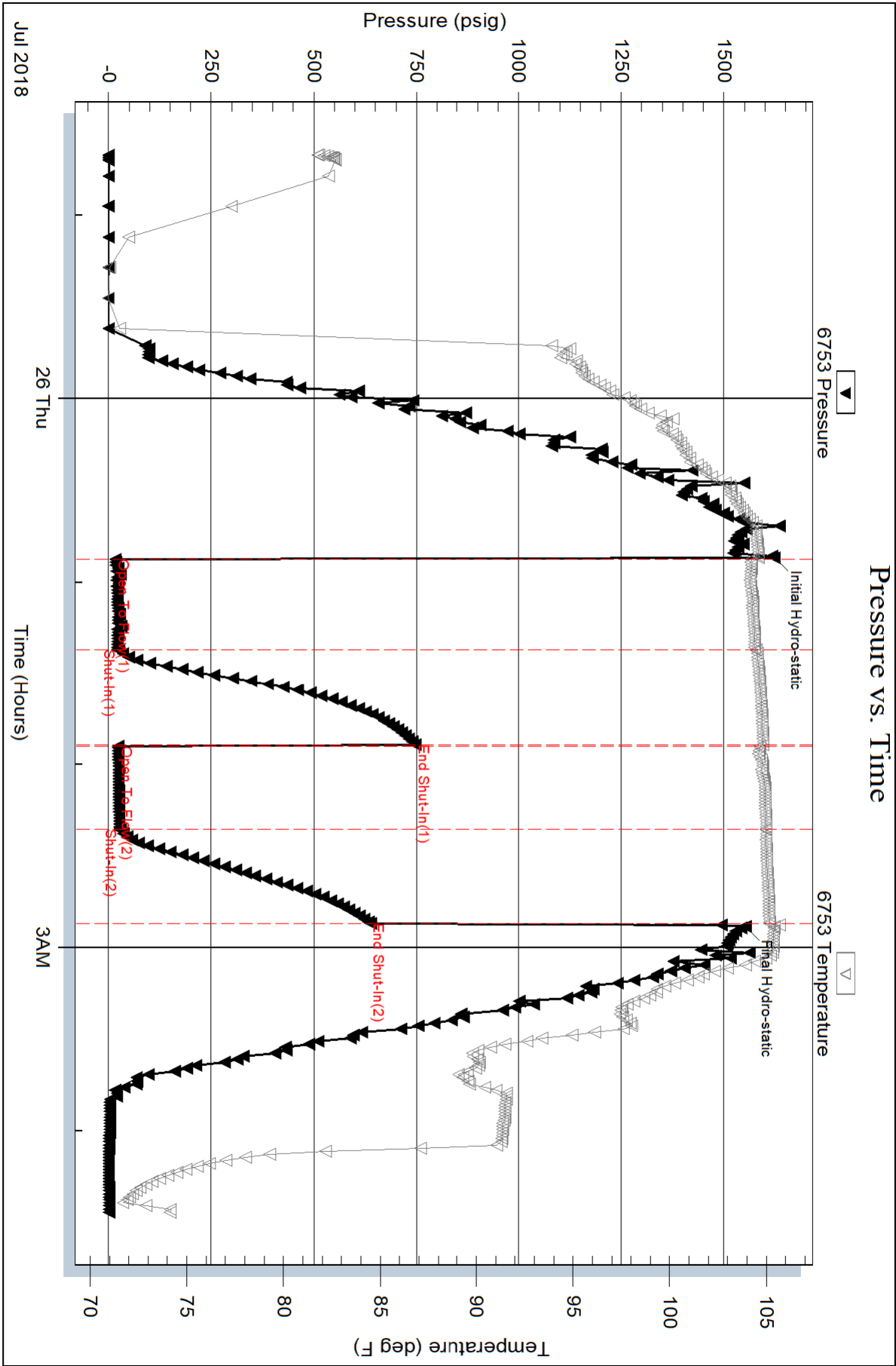
Recovery Comments:

Serial #: 6753

Outside TDI, Inc.

Unrein #1

DST Test Number: 1



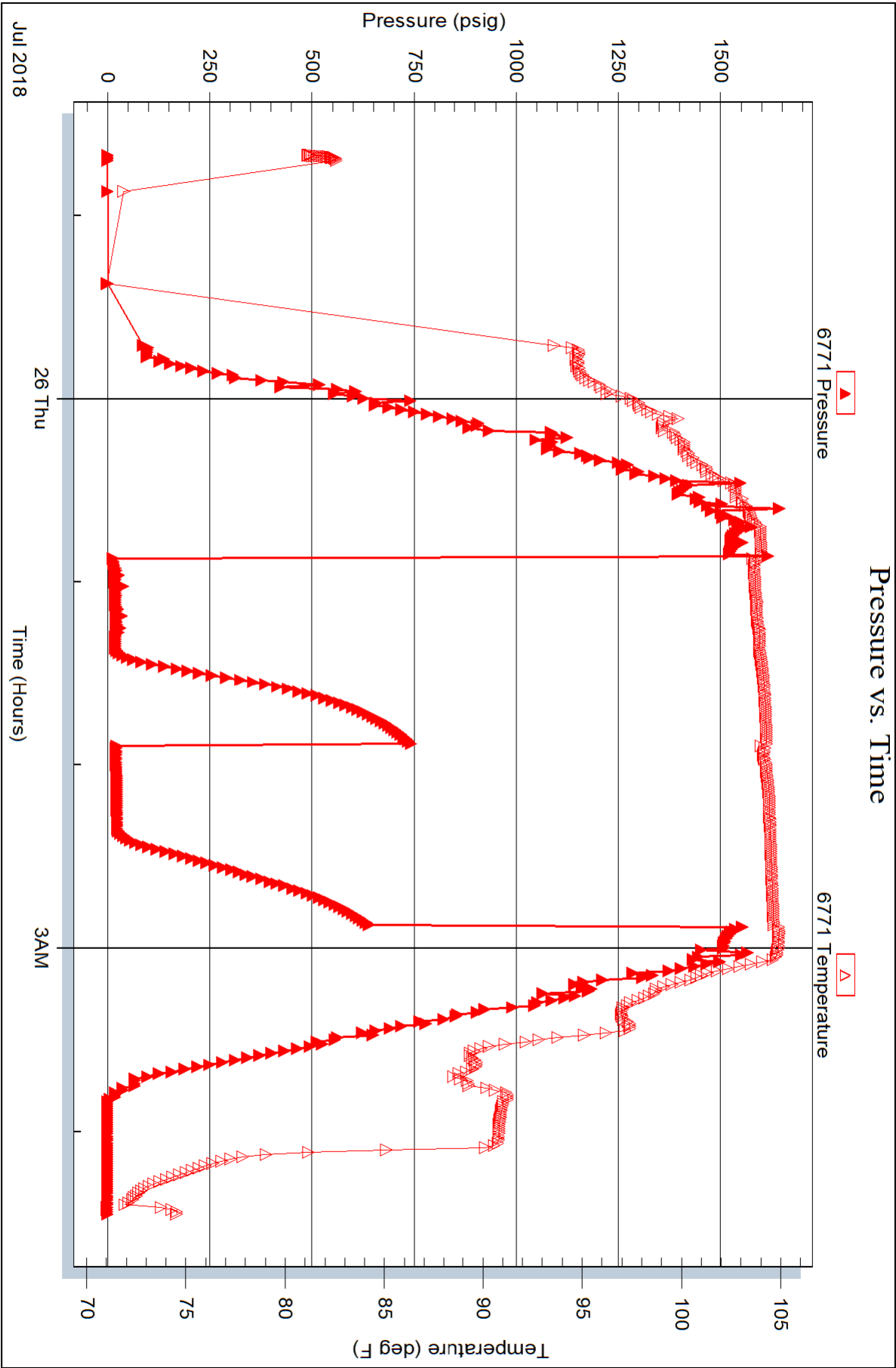
Serial #: 6771

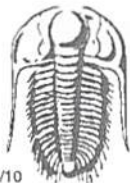
Inside

TDI, Inc.

Unrein #1

DST Test Number: 1





**TRILOBITE
TESTING INC.**

1515 Commerce Parkway • Hays, Kansas 67601

Test Ticket

NO. **63133**

Well Name & No. Uran #1 Test No. 1 Date 7/25/18
 Company TPI, Inc. Elevation 1936 KB 1926 GL
 Address 1310 Bison Bl. Hays, KS 67601
 Co. Rep / Geo. Herb Dernas Rig Southwind #8
 Location: Sec. 29 Twp. 14 S Rge. 17 W Co. Ellis State KS

Interval Tested 3228-3325 Zone Tested LKC "C-G"
 Anchor Length 97' Drill Pipe Run 3242 Mud Wt. 9.0
 Top Packer Depth 3223 Drill Collars Run — Vis 59
 Bottom Packer Depth 3228 Wt. Pipe Run — WL 6.4
 Total Depth 3325 Chlorides 5900 ppm System LCM 2#

Blow Description IF - slowly built to 1"
FSI - No flow
PF - No flow
FSI - No flow

Rec	Feet of	%gas	%oil	%water	%mud
<u>20</u>	<u>M</u>				
Rec	Feet of	%gas	%oil	%water	%mud
Rec	Feet of	%gas	%oil	%water	%mud
Rec	Feet of	%gas	%oil	%water	%mud
Rec	Feet of	%gas	%oil	%water	%mud

Rec Total 20 BHT 105° Gravity — API RW — @ — F Chlorides — ppm
 (A) Initial Hydrostatic 1623 ☒ Test 1050
 (B) First Initial Flow 17 ☐ Jars —
 (C) First Final Flow 22 ☐ Safety Joint —
 (D) Initial Shut-In 247 ☐ Circ Sub —
 (E) Second Initial Flow 24 ☐ Hourly Standby —
 (F) Second Final Flow 26 ☒ Mileage 16 RT 16+16
 (G) Final Shut-In 638 ☐ Sampler —
 (H) Final Hydrostatic 1553 ☐ Straddle —

Initial Open 30
 Initial Shut-In 30
 Final Flow 30
 Final Shut-In 30

☐ Shale Packer —
☐ Extra Packer —
☐ Extra Recorder —
☐ Day Standby —
☐ Accessibility —
 Sub Total 1082

T-On Location 2225
 T-Started 2240
 T-Open 0052
 T-Pulled 0252
 T-Out 0427
 Comments Teds loaded
7/27 @ 0215

☐ Ruined Shale Packer —
☐ Ruined Packer —
☐ Extra Copies —
 Sub Total 0
 Total 1082
 MP/DST Disc't —

Approved By —

Our Representative

Brannan Lonsdale