

KANSAS CORPORATION COMMISSION
OIL & GAS CONSERVATION DIVISION

TEMPORARY ABANDONMENT WELL APPLICATION

OPERATOR: License#
Name:
Address 1:
Address 2:
City: State: Zip:
Contact Person:
Phone:
Contact Person Email:
Field Contact Person:
Field Contact Person Phone:

API No. 15-
Spot Description:
Sec. Twp. S. R.
GPS Location: Lat: Long:
Datum: NAD27 NAD83 WGS84
County: Elevation:
Lease Name: Well #:
Well Type: Oil Gas OG WSW Other:
SWD Permit #: ENHR Permit #:
Gas Storage Permit #:
Spud Date: Date Shut-In:

Table with 7 columns: Conductor, Surface, Production, Intermediate, Liner, Tubing. Rows include Size, Setting Depth, Amount of Cement, Top of Cement, Bottom of Cement.

Casing Fluid Level from Surface: How Determined? Date:
Casing Squeeze(s): to w / sacks of cement, to w / sacks of cement. Date:
Do you have a valid Oil & Gas Lease? Yes No
Depth and Type: Junk in Hole at Tools in Hole at Casing Leaks: Yes No Depth of casing leak(s):
Type Completion: ALT. I ALT. II Depth of: DV Tool: w / sacks of cement Port Collar: w / sack of cement
Packer Type: Size: Inch Set at: Feet
Total Depth: Plug Back Depth: Plug Back Method:

Geological Data:

Table with 4 columns: Formation Name, Formation Top, Formation Base, Completion Information. Rows 1 and 2.

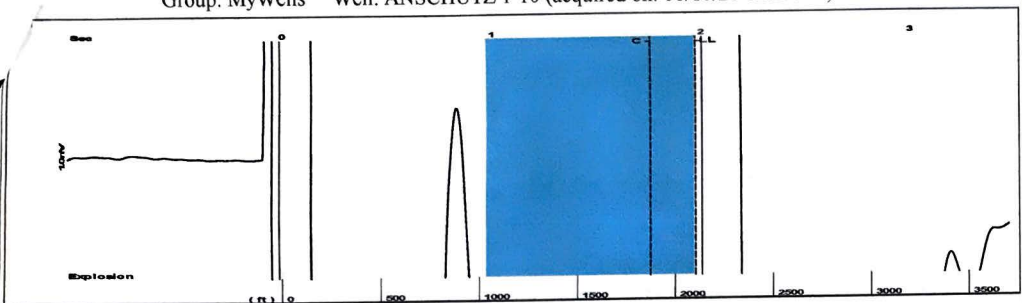
UNDER PENALTY OF PERJURY I HEREBY ATTEST THAT THE INFORMATION CONTAINED HEREIN IS TRUE AND CORRECT TO THE BEST OF MY KNOWLEDGE

Submitted Electronically

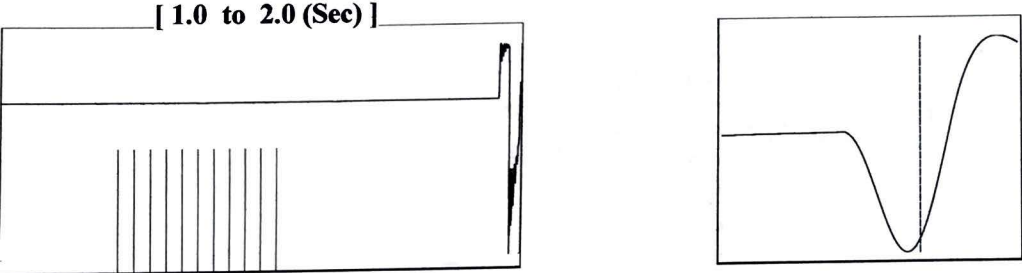
Do NOT Write in This Space - KCC USE ONLY
Date Tested: Results: Date Plugged: Date Repaired: Date Put Back in Service:
Review Completed by: Comments:
TA Approved: Yes Denied Date:

Mail to the Appropriate KCC Conservation Office:

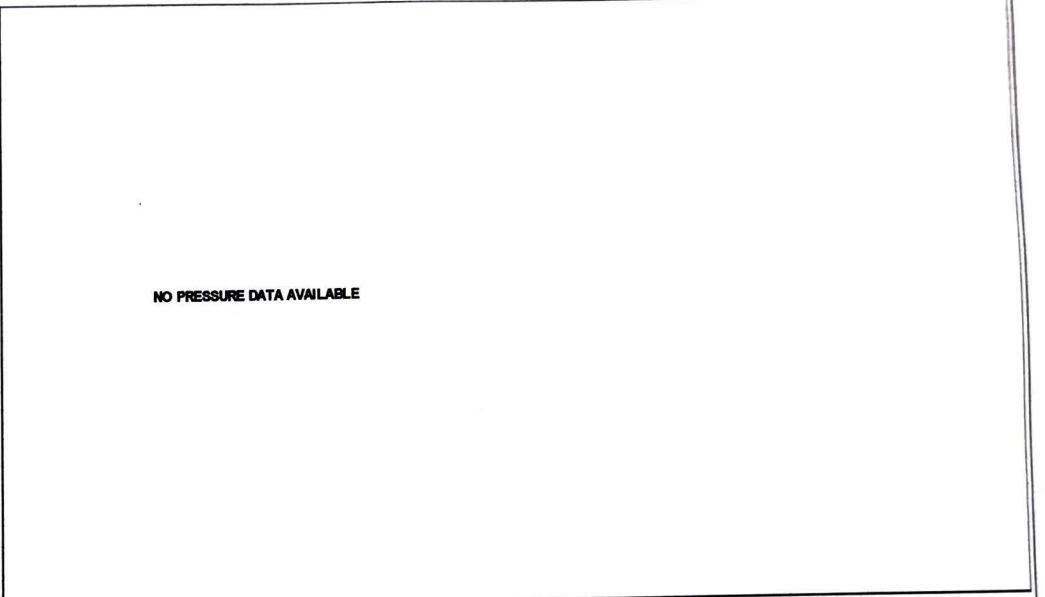
Table with 2 columns: Office Address, Phone. Rows for District Office #1, #2, #3, #4.



Filter Type High Pass Automatic Collar Count Yes Time 1.972 sec
 Manual Acoustic Velo 2085.53 ft/s Manual JTS/sec 32.8947 Joints 66.3654 Jts
 Depth 2103.78 ft



Analysis Method: Automatic



Change in Pressure 0.00 psi PT13682
 Range 0 - ? psi
 Change in Time 0.00 min

Group: MyWells Well: ANSCHUTZ 1-10 (acquired on: 08/10/20 12:25:38)

Production	Potential	Casing Pressure
Current		-14.7 psi (g)
Oil - *-	- *- BBL/D	Casing Pressure Buildup
Water - *-	- *- BBL/D	- *- psi
Gas - *-	- *- Mscf/D	- *- min
IPR Method	Vogel	Gas/Liquid Interface Pressure
PBHP/SBHP	- *-	- *- psi (g)
Production Efficiency	0.0	Liquid Level Depth
Oil 40 deg.API		2103.78 ft
Water 1.05 Sp.Gr.H2O		Pump Intake Depth
Gas 0.70 Sp.Gr.AIR		- *- ft
Acoustic Velocity	2133.65 ft/s	Formation Depth
		3560.00 ft
Formation Submergence		Pump Intake
Total Gaseous Liquid Column HT (TVD)	- *- ft	- *- psi (g)
Equivalent Gas Free Liquid HT (TVD)	- *- ft	Producing BHP
Acoustic Test		- *- psi (g)
		Static BHP
		- *- psi (g)

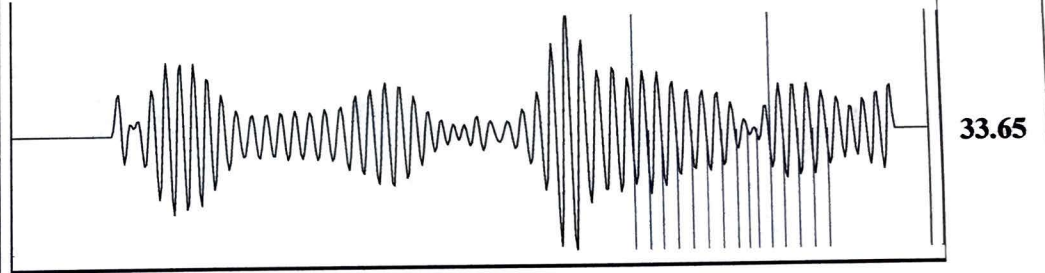


Producing

Annular Gas Flow - *- Mscf/D

% Liquid 100 %

Group: MyWells Well: ANSCHUTZ 1-10 (acquired on: 08/10/20 12:25:38)



Acoustic Velocity	2133.65 ft/s	Joints counted	14
Joints Per Second	33.6538 jts/sec	Joints to liquid level	66.3654
Depth to liquid level	2103.78 ft	Filter Width	30.8947 34.8947
Automatic Collar Count	Yes	Time to 1st Collar	1.34 1.756

August 20, 2020

Jose Reyes
American Warrior, Inc.
PO BOX 399
GARDEN CITY, KS 67846-0399

Re: Temporary Abandonment
API 15-009-25042-00-00
ANSCHUTZ 1-10
NE/4 Sec.10-20S-13W
Barton County, Kansas

Dear Jose Reyes:

"Your temporary abandonment (TA) application for the well listed above has been approved. In accordance with K.A.R. 82-3-111 the TA status of this well will expire 08/20/2021.

- * If you return this well to service or plug it, please notify the District Office.
- * If you sell this well you are required to file a Transfer of Operator form, T-1.
- * If the well will remain temporarily abandoned, you must submit a new TA application, CP-111, before 08/20/2021.

You may contact me at the number above if you have questions.

Very truly yours,

RICHARD WILLIAMS"