

KANSAS CORPORATION COMMISSION
OIL & GAS CONSERVATION DIVISION

TEMPORARY ABANDONMENT WELL APPLICATION

OPERATOR: License# \_\_\_\_\_
Name: \_\_\_\_\_
Address 1: \_\_\_\_\_
Address 2: \_\_\_\_\_
City: \_\_\_\_\_ State: \_\_\_\_\_ Zip: \_\_\_\_\_ + \_\_\_\_\_
Contact Person: \_\_\_\_\_
Phone:( \_\_\_\_\_ ) \_\_\_\_\_
Contact Person Email: \_\_\_\_\_
Field Contact Person: \_\_\_\_\_
Field Contact Person Phone: ( \_\_\_\_\_ ) \_\_\_\_\_

API No. 15- \_\_\_\_\_
Spot Description: \_\_\_\_\_
- - - - - Sec. \_\_\_\_\_ Twp. \_\_\_\_\_ S. R. \_\_\_\_\_  E  W
\_\_\_\_\_ feet from  N /  S Line of Section
\_\_\_\_\_ feet from  E /  W Line of Section
GPS Location: Lat: \_\_\_\_\_, Long: \_\_\_\_\_
Datum:  NAD27  NAD83  WGS84
County: \_\_\_\_\_ Elevation: \_\_\_\_\_  GL  KB
Lease Name: \_\_\_\_\_ Well #: \_\_\_\_\_
Well Type: (check one)  Oil  Gas  OG  WSW  Other: \_\_\_\_\_
 SWD Permit #: \_\_\_\_\_  ENHR Permit #: \_\_\_\_\_
 Gas Storage Permit #: \_\_\_\_\_
Spud Date: \_\_\_\_\_ Date Shut-In: \_\_\_\_\_

Table with 7 columns: Conductor, Surface, Production, Intermediate, Liner, Tubing. Rows include Size, Setting Depth, Amount of Cement, Top of Cement, Bottom of Cement.

Casing Fluid Level from Surface: \_\_\_\_\_ How Determined? \_\_\_\_\_ Date: \_\_\_\_\_
Casing Squeeze(s): \_\_\_\_\_ to \_\_\_\_\_ w / \_\_\_\_\_ sacks of cement, \_\_\_\_\_ to \_\_\_\_\_ w / \_\_\_\_\_ sacks of cement. Date: \_\_\_\_\_
Do you have a valid Oil & Gas Lease?  Yes  No
Depth and Type:  Junk in Hole at \_\_\_\_\_  Tools in Hole at \_\_\_\_\_ Casing Leaks:  Yes  No Depth of casing leak(s): \_\_\_\_\_
Type Completion:  ALT. I  ALT. II Depth of:  DV Tool: \_\_\_\_\_ w / \_\_\_\_\_ sacks of cement  Port Collar: \_\_\_\_\_ w / \_\_\_\_\_ sack of cement
Packer Type: \_\_\_\_\_ Size: \_\_\_\_\_ Inch Set at: \_\_\_\_\_ Feet
Total Depth: \_\_\_\_\_ Plug Back Depth: \_\_\_\_\_ Plug Back Method: \_\_\_\_\_

Geological Date:

Table with 4 columns: Formation Name, Formation Top, Formation Base, Completion Information. Rows 1 and 2.

UNDER PENALTY OF PERJURY I HEREBY ATTEST THAT THE INFORMATION CONTAINED HEREIN IS TRUE AND CORRECT TO THE BEST OF MY KNOWLEDGE

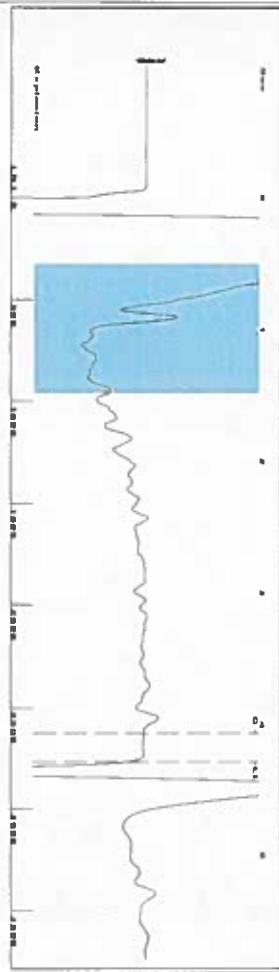
Submitted Electronically

Do NOT Write in This Space - KCC USE ONLY
Date Tested: \_\_\_\_\_ Results: \_\_\_\_\_ Date Plugged: \_\_\_\_\_ Date Repaired: \_\_\_\_\_ Date Put Back in Service: \_\_\_\_\_
Review Completed by: \_\_\_\_\_ Comments: \_\_\_\_\_
TA Approved:  Yes  Denied Date: \_\_\_\_\_

Mail to the Appropriate KCC Conservation Office:

Table with 3 columns: District Office, Address, Phone. Rows for District Office #1, #2, #3, #4.

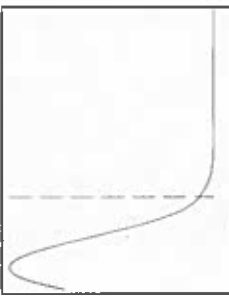
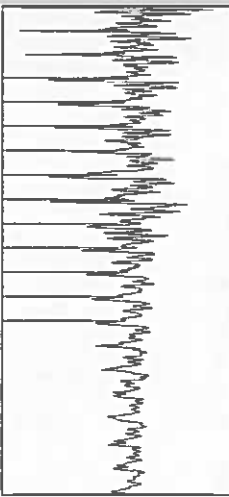
Group: SUBLETTE Well: Cox 1-162 (acquired on: 08/13/20 12:45:15)



Filler Type High Pass  
Manual Acoustic Velo 1270.54 n/s  
Automatic Collar Count Yes  
Manual JTS/sec 20.0401

Time 4.287 sec  
Joints 87.2355 Jts  
Depth 2765.36 ft

[0.5 to 1.5 (Sec) ]



Analysis Method: Automatic

Group: SUBLETTE Well: Cox 1-162 (acquired on: 08/13/20 12:45:15)

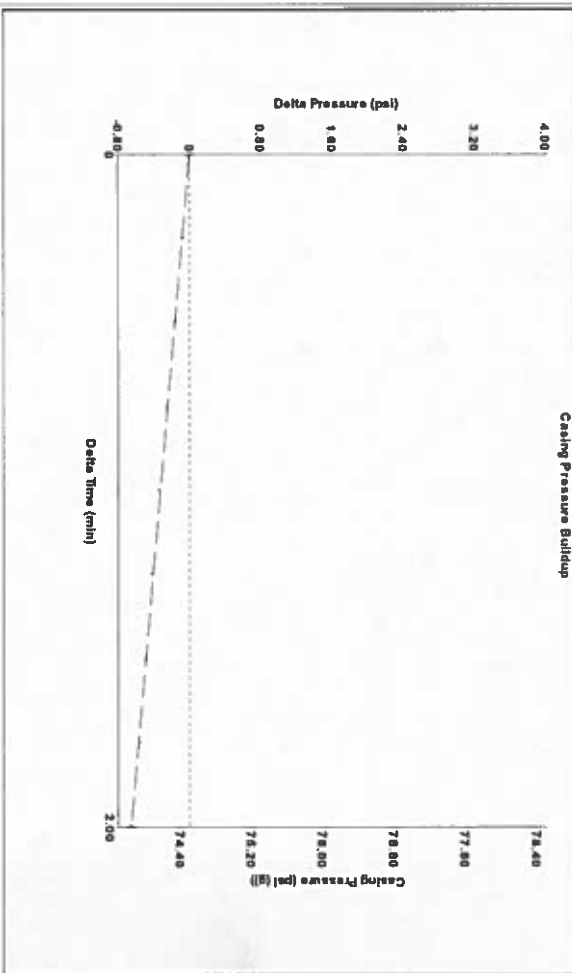
Production	Potential	Casing Pressure	Producing
Oil -*- Water -*- Gas -*-	-*- BBL/D -*- BBL/D -*- Misc/D	74.5 psi (g) Casing Pressure Buildup -0.7 psi	Annular Gas Flow 0 Misc/D % Liquid 100 %
IPR Method PBHP/SBHP Production Efficiency	Vogel -*- 0.0	Gas/Liquid Interface Pressure 80.6 psi (g)	
Oil 40 deg-API Water 1.05 Sp.Gr.H2O Gas 0.71 Sp.Gr.AIR		Liquid Level Depth 2765.36 ft	Pump Intake 85.8 psi (g) Producing BHP 80.5 psi (g) Static BHP - psi (g)
Acoustic Velocity	1290.12 n/s	Pump Intake Depth 2781.00 ft Formation Depth 2710.00 ft	

Formation Submergence  
Total Gaseous Liquid Column HT (TVD)  
Equivalent Gas Free Liquid HT (TVD)

16 ft  
16 ft

8/13/2020

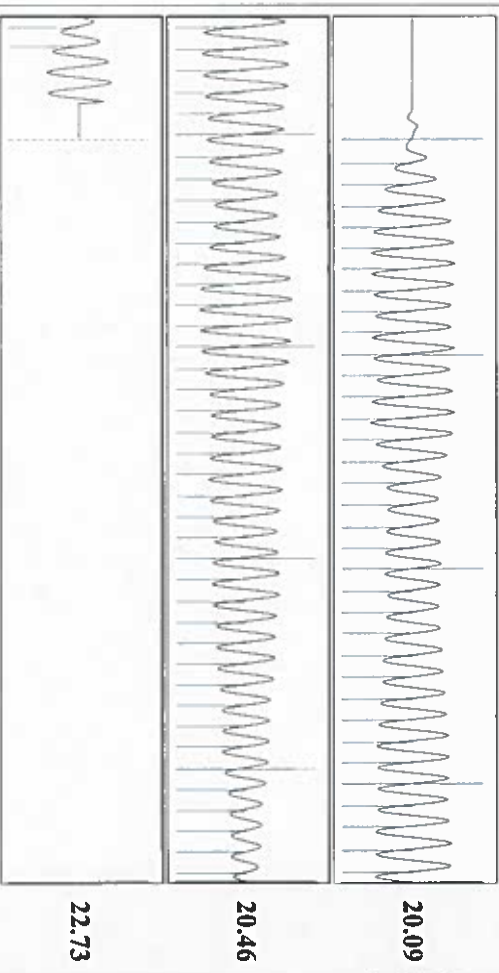
Group: SUBLETTE Well: Cox 1-162 (acquired on: 08/13/20 12:45:15)



Change in Pressure -0.65 psi  
Change in Time 2.00 min

PT14679 Range 0 - 9 psi

Group: SUBLETTE Well: Cox 1-162 (acquired on: 08/13/20 12:45:15)



Acoustic Velocity 1290.12 n/s  
Joints Per Second 20.3488 Jts/sec  
Depth to liquid level 2765.36 ft  
Automatic Collar Count Yes

Joints counted 77  
Joints to liquid level 87.2355  
Filler Width 18.0401  
Time to 1st Collar 0.284

August 25, 2020

Katherine McClurkan  
Merit Energy Company, LLC  
13727 Noel Road, Suite 1200  
DALLAS, TX 75240-7362

Re: Temporary Abandonment  
API 15-081-21552-00-00  
Cox 1-162  
SE/4 Sec.02-28S-33W  
Haskell County, Kansas

Dear Katherine McClurkan:

"Your temporary abandonment (TA) application for the well listed above has been approved. In accordance with K.A.R. 82-3-111 the TA status of this well will expire 08/25/2021.

- \* If you return this well to service or plug it, please notify the District Office.
- \* If you sell this well you are required to file a Transfer of Operator form, T-1.
- \* If the well will remain temporarily abandoned, you must submit a new TA application, CP-111, before 08/25/2021.

You may contact me at the number above if you have questions.

Very truly yours,

Michael Maier"