

**KANSAS CORPORATION COMMISSION  
OIL & GAS CONSERVATION DIVISION**

**KOLAR Document ID: 1527164**

Form CP-111

July 2017

Form must be Typed

Form must be signed

*All blanks must be complete*

## TEMPORARY ABANDONMENT WELL APPLICATION

OPERATOR: License# \_\_\_\_\_

Name: \_\_\_\_\_

Address 1: \_\_\_\_\_

Address 2: \_\_\_\_\_

City: \_\_\_\_\_ State: \_\_\_\_\_ Zip: \_\_\_\_\_ + \_\_\_\_\_

Contact Person: \_\_\_\_\_

Phone: ( \_\_\_\_\_ ) \_\_\_\_\_

Contact Person Email: \_\_\_\_\_

Field Contact Person: \_\_\_\_\_

Field Contact Person Phone: ( \_\_\_\_\_ ) \_\_\_\_\_

API No. 15- \_\_\_\_\_

Spot Description: \_\_\_\_\_

\_\_\_\_ - \_\_\_\_ - \_\_\_\_ - \_\_\_\_ Sec. \_\_\_\_\_ Twp. \_\_\_\_\_ S. R. \_\_\_\_\_ ☐ E ☐ W

\_\_\_\_\_ feet from ☐ N / ☐ S Line of Section

\_\_\_\_\_ feet from ☐ E / ☐ W Line of Section

GPS Location: Lat: \_\_\_\_\_, Long: \_\_\_\_\_

(e.g. xx.xxxxx) (e.g. -xxx.xxxxx)

Datum: ☐ NAD27 ☐ NAD83 ☐ WGS84

County: \_\_\_\_\_ Elevation: \_\_\_\_\_ ☐ GL ☐ KB

Lease Name: \_\_\_\_\_ Well #: \_\_\_\_\_

Well Type: *(check one)* ☐ Oil ☐ Gas ☐ OG ☐ WSW ☐ Other: \_\_\_\_\_

☐ SWD Permit #: \_\_\_\_\_ ☐ ENHR Permit #: \_\_\_\_\_

☐ Gas Storage Permit #: \_\_\_\_\_

Spud Date: \_\_\_\_\_ Date Shut-In: \_\_\_\_\_

	Conductor	Surface	Production	Intermediate	Liner	Tubing
Size						
Setting Depth						
Amount of Cement						
Top of Cement						
Bottom of Cement						

Casing Fluid Level from Surface: \_\_\_\_\_ How Determined? \_\_\_\_\_ Date: \_\_\_\_\_

Casing Squeeze(s): \_\_\_\_\_ to \_\_\_\_\_ w / \_\_\_\_\_ sacks of cement, \_\_\_\_\_ to \_\_\_\_\_ w / \_\_\_\_\_ sacks of cement. Date: \_\_\_\_\_  
(top) (bottom) (top) (bottom)

Do you have a valid Oil & Gas Lease? ☐ Yes ☐ No

Depth and Type: ☐ Junk in Hole at \_\_\_\_\_ ☐ Tools in Hole at \_\_\_\_\_ Casing Leaks: ☐ Yes ☐ No Depth of casing leak(s): \_\_\_\_\_  
(depth) (depth)

Type Completion: ☐ ALT. I ☐ ALT. II Depth of: ☐ DV Tool: \_\_\_\_\_ w / \_\_\_\_\_ sacks of cement ☐ Port Collar: \_\_\_\_\_ w / \_\_\_\_\_ sack of cement  
(depth) (depth)

Packer Type: \_\_\_\_\_ Size: \_\_\_\_\_ Inch Set at: \_\_\_\_\_ Feet

Total Depth: \_\_\_\_\_ Plug Back Depth: \_\_\_\_\_ Plug Back Method: \_\_\_\_\_

**Geological Date:**

Formation Name	Formation Top	Formation Base	Completion Information
1. _____	At: _____	to _____ Feet	Perforation Interval _____ to _____ Feet or Open Hole Interval _____ to _____ Feet
2. _____	At: _____	to _____ Feet	Perforation Interval _____ to _____ Feet or Open Hole Interval _____ to _____ Feet

UNDER PENALTY OF PERJURY I HEREBY ATTEST THAT THE INFORMATION CONTAINED HEREIN IS TRUE AND CORRECT TO THE BEST OF MY KNOWLEDGE

### Submitted Electronically

<b>Do NOT Write in This Space - KCC USE ONLY</b>	Date Tested: _____	Results: _____	Date Plugged: _____	Date Repaired: _____	Date Put Back in Service: _____
	Review Completed by: _____ Comments: _____				
TA Approved: <input type="checkbox"/> Yes <input type="checkbox"/> Denied Date: _____					

**Mail to the Appropriate KCC Conservation Office:**

	KCC District Office #1 - 210 E. Frontview, Suite A, Dodge City, KS 67801	Phone 620.682.7933
	KCC District Office #2 - 3450 N. Rock Road, Building 600, Suite 601, Wichita, KS 67226	Phone 316.337.7400
	KCC District Office #3 - 137 E. 21st St., Chanute, KS 66720	Phone 620.902.6450
	KCC District Office #4 - 2301 E. 13th Street, Hays, KS 67601-2651	Phone 785.261.6250



## Liquid Level

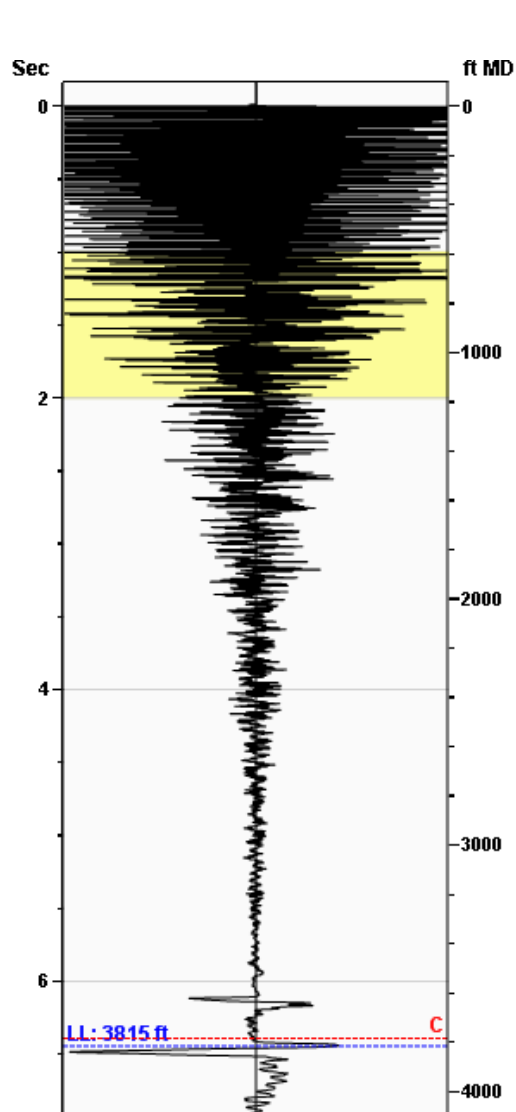
3815 ft MD

Fluid Above Pump

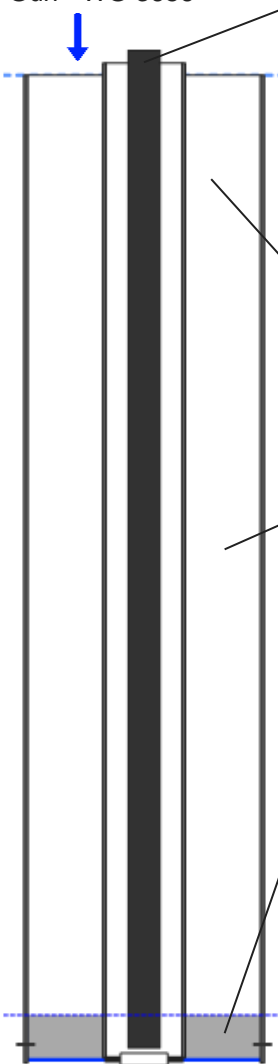
181 ft TVD

Equivalent Gas Free Above Pump

181 ft TVD



Gun - WG 3656



## Production

Date Entered	08/18/20		
	Current	Potential	
Oil	**	**	BBL/D
Water	**	**	BBL/D
Gas	**	**	Mscf/D
IPR Method	Vogel		
PBHP/SBHP	0.81		
Producing Efficiency	30.72%		

## Casing Pressure

Pressure	459.7 psi (g)
----------	---------------

## Annular Gas Flow

Gas Flow	0.0 Mscf/D
----------	------------

## Fluid Properties

% Liquid Above Pump	100.00%
% Liquid Below Pump	**

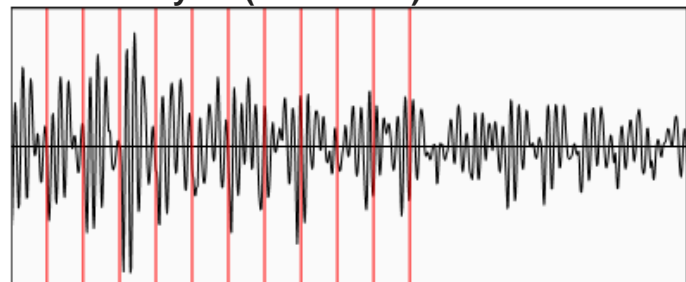
## Depths

Pump Intake Depth	3996 ft
Formation Depth	3946 ft

## Wellbore Pressures

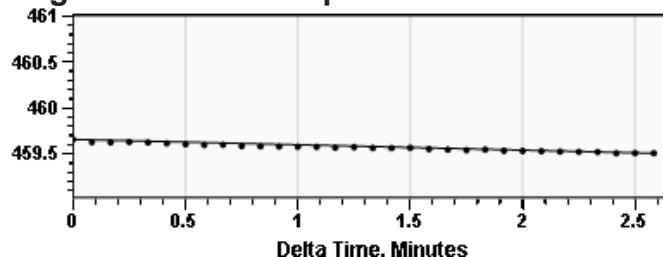
PIP	571.0 psi (g)
PBHP	554.8 psi (g)
SBHP	685.0 psi (g)
Gas/Liq Interface	512.4 psi (g)

## Collar Analysis (Automatic)



Average Acoustic Velocity	1184 ft/s
Average Joints Per Sec.	19.12 Jts/sec
Joints To Liquid	123.19 Jts

## Casing Pressure Buildup



Casing Pressure	459.7 psi (g)
Buildup	-0.2 psi (g)
Buildup Time	2 min 35 sec
Gas Gravity from Collar Analysis (Automatic)	0.7557 Air = 1

## Comments and Recommendations

Casing Shut in w/ 459 psi. Tbg Leak 3720' FL @ 3905'

Roberts Resources, Inc.  
P.O. Box 75187  
Wichita, KS 67275  
kent@robertsresources.kscoxmail.com  
316-215-1683

August 25, 2020

Kent Roberts  
AGV Corp.  
123 N MAIN  
PO BOX 377  
ATTICA, KS 67009-0377

Re: Temporary Abandonment  
API 15-191-22392-00-00  
EARLES 2  
NW/4 Sec.25-32S-04W  
Sumner County, Kansas

Dear Kent Roberts:

"Your temporary abandonment (TA) application for the well listed above has been approved. In accordance with K.A.R. 82-3-111 the TA status of this well will expire 08/25/2021.

- \* If you return this well to service or plug it, please notify the District Office.
- \* If you sell this well you are required to file a Transfer of Operator form, T-1.
- \* If the well will remain temporarily abandoned, you must submit a new TA application, CP-111, before 08/25/2021.

You may contact me at the number above if you have questions.

Very truly yours,

Steve VanGieson"