

KANSAS CORPORATION COMMISSION
OIL & GAS CONSERVATION DIVISION

Form must be Typed
Form must be signed

TEMPORARY ABANDONMENT WELL APPLICATION

All blanks must be complete

OPERATOR: License#
Name:
Address 1:
Address 2:
City: State: Zip:
Contact Person:
Phone:
Contact Person Email:
Field Contact Person:
Field Contact Person Phone:

API No. 15-
Spot Description:
Sec. Twp. S. R.
feet from N / S Line of Section
feet from E / W Line of Section
GPS Location: Lat: , Long:
Datum: NAD27 NAD83 WGS84
County: Elevation: GL KB
Lease Name: Well #:
Well Type: Oil Gas OG WSW Other:
SWD Permit #: ENHR Permit #:
Gas Storage Permit #:
Spud Date: Date Shut-In:

Table with 7 columns: Conductor, Surface, Production, Intermediate, Liner, Tubing. Rows include Size, Setting Depth, Amount of Cement, Top of Cement, Bottom of Cement.

Casing Fluid Level from Surface: How Determined? Date:
Casing Squeeze(s): to w / sacks of cement, to w / sacks of cement. Date:
Do you have a valid Oil & Gas Lease? Yes No
Depth and Type: Junk in Hole at Tools in Hole at Casing Leaks: Yes No Depth of casing leak(s):
Type Completion: ALT. I ALT. II Depth of: DV Tool: w / sacks of cement Port Collar: w / sack of cement
Packer Type: Size: Inch Set at: Feet
Total Depth: Plug Back Depth: Plug Back Method:

Geological Date:

Table with 4 columns: Formation Name, Formation Top, Formation Base, Completion Information. Rows 1 and 2.

UNDER PENALTY OF PERJURY I HEREBY ATTEST THAT THE INFORMATION CONTAINED HEREIN IS TRUE AND CORRECT TO THE BEST OF MY KNOWLEDGE

Submitted Electronically

Do NOT Write in This Space - KCC USE ONLY
Date Tested: Results: Date Plugged: Date Repaired: Date Put Back in Service:
Review Completed by: Comments:
TA Approved: Yes Denied Date:

Mail to the Appropriate KCC Conservation Office:

Table with 3 columns: District Office #, Address, Phone. Rows 1-4.



Liquid Level

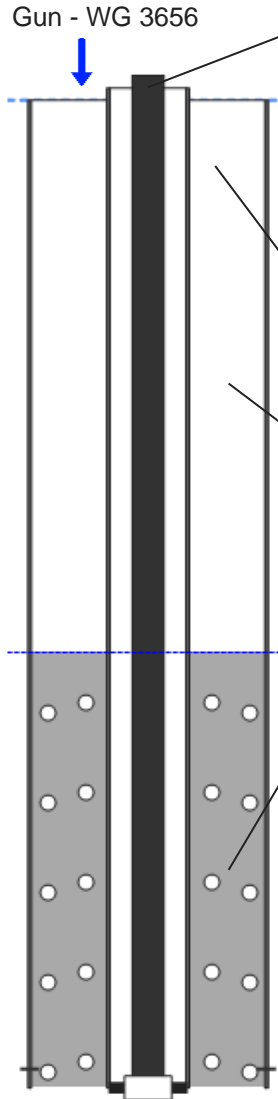
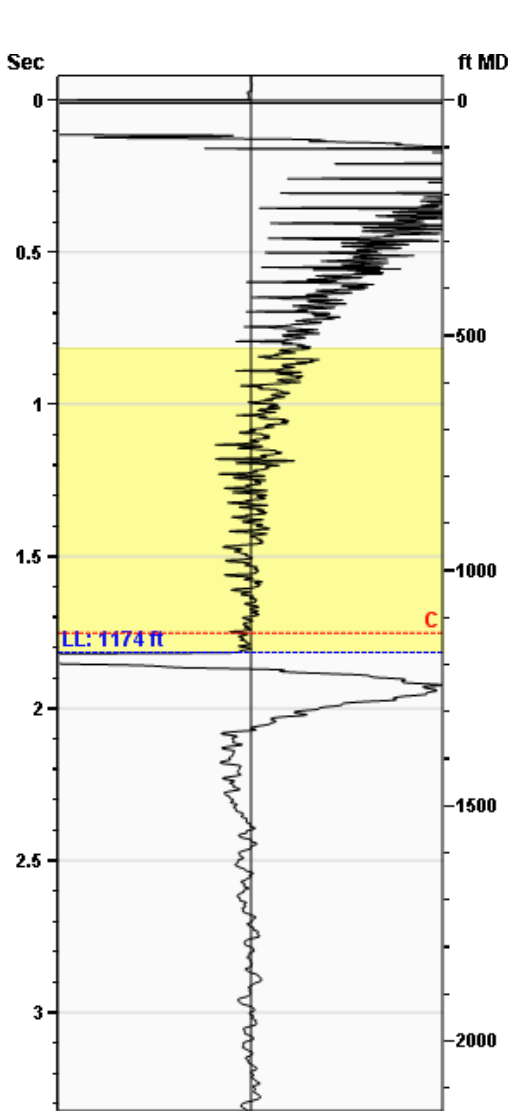
1174 ft MD

Fluid Above Pump

926 ft TVD

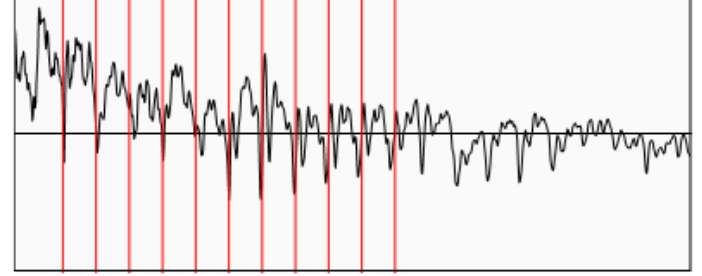
Equivalent Gas Free Above Pump

790 ft TVD



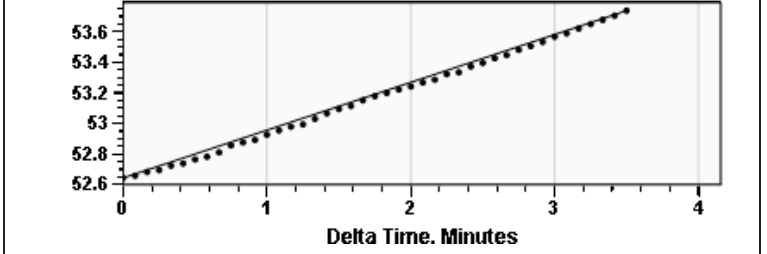
Production			
Date Entered	08/18/20		
	Current	Potential	
Oil	**	**	BBL/D
Water	**	**	BBL/D
Gas	**	**	Mscf/D
IPR Method	Vogel		
PBHP/SBHP	-0.00		
Producing Efficiency	0.00%		
Casing Pressure			
Pressure	52.6 psi (g)		
Annular Gas Flow			
Gas Flow	2.3 Mscf/D		
Fluid Properties			
% Liquid Above Pump	84.76%		
% Liquid Below Pump	**		
Depths			
Pump Intake Depth	2100 ft		
Formation Depth	2064 ft		
Wellbore Pressures			
PIP	320.9 psi (g)		
PBHP	309.0 psi (g)		
SBHP	**		
Gas/Liq Interface	54.6 psi (g)		

Collar Analysis (Automatic)



Average Acoustic Velocity 1293 ft/s
 Average Joints Per Sec. 20.33 Jts/sec
 Joints To Liquid 36.91 Jts

Casing Pressure Buildup



Casing Pressure 52.6 psi (g)
 Buildup 1.1 psi (g)
 Buildup Time 3 min 30 sec
 Gas Gravity from Collar Analysis (Automatic) 0.6941 Air = 1

Comments and Recommendations

Well down with rod part. FL for TA

Roberts Resources, Inc.
 P.O. Box 75187
 Wichita, KS 67275
 kent@robertsresources.kscoxmail.com
 316-215-1683

August 25, 2020

Kent Roberts
AGV Corp.
123 N MAIN
PO BOX 377
ATTICA, KS 67009-0377

Re: Temporary Abandonment
API 15-191-22496-00-00
CHITWOOD 1
NW/4 Sec.34-31S-03W
Sumner County, Kansas

Dear Kent Roberts:

"Your temporary abandonment (TA) application for the well listed above has been approved. In accordance with K.A.R. 82-3-111 the TA status of this well will expire 08/25/2021.

- * If you return this well to service or plug it, please notify the District Office.
- * If you sell this well you are required to file a Transfer of Operator form, T-1.
- * If the well will remain temporarily abandoned, you must submit a new TA application, CP-111, before 08/25/2021.

You may contact me at the number above if you have questions.

Very truly yours,

Steve VanGieson"