



AUSTIN B. KLAUS



Cell 785.650.3629
Work 785.483.3145
Ext 225

PO BOX 352
Russell, KS 67665
austin.klaus@johnofarmer.com

Scale 1:240 (5"=100') Imperial
Measured Depth Log

Well Name: Finney #1
Location: Lyon County
License Number: API #15-111-20535-00-00
Spud Date: 4/24/2018
Surface Coordinates: Section 6, Township 17 South, Range 10 East
1800' FNL & 1620' FEL
Bottom Hole Coordinates: Vertical well w/ minimal deviation, same as above
Ground Elevation (ft): 1,286' **K.B. Elevation (ft):** 1,294'
Logged Interval (ft): 2,300 **To:** RTD **Total Depth (ft):** 3,130
Formation: Miss-Arbuckle
Type of Drilling Fluid: Chemical (Mud Co.)

Region: Kansas

Drilling Completed: 4/30/2018

Printed by STRIP.LOG from WellSight Systems 1-800-447-1534 www.WellSight.com

OPERATOR

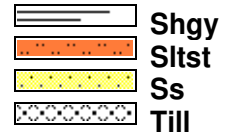
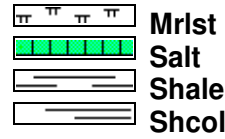
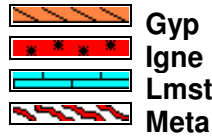
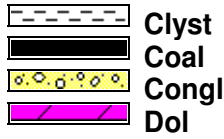
Company: John O. Farmer, Inc.
Address: 370 W. Wichita Ave.
Russell, KS 67665

Comments

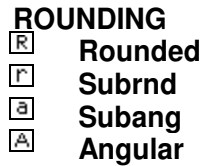
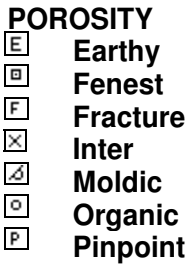
The Finney #1 well was drilled by Discovery Drilling Rig #2 (Tool Pusher: Terry Wickham).

The location for the Finney #1 was discovered via 3D seismic. Rock samples were gathered and evaluated from 2,300' - 3,130'. Oil shows were encountered in the Hunton, Viola, & Simpson. Structurally, the Mississippian top was picked 8' high to the comparison well, Cobb #1 (Cities Service - 1958). Structural thinning occurred through the Miss, which resulted in a Kinderhook picked 11' high to the comparison well. Additional thinning occurred below the Hunton and the Viola top was picked 17' high to Cobb #1. After evaluation of all oil shows, DST results, and electric logs, it was decided that 5 1/2" production casing be set to further evaluate the Finney #1 on 5/2/2018.

ROCK TYPES



OTHER SYMBOLS



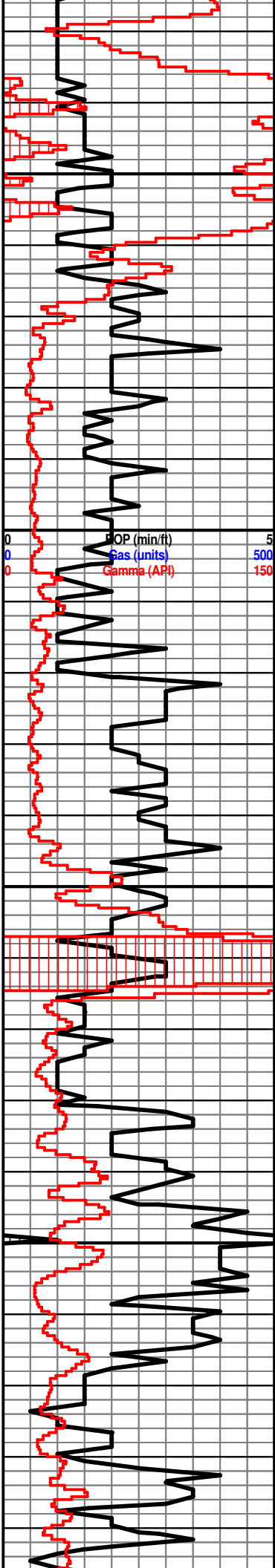
Curve Track 1		Depth	Lithology	Geological Descriptions	DST/Mud/Survey
ROP (min/ft)	Gamma (API)				
0	5	22			
0	500				
0	150				
-4/24/2018 Spud @ 4:15pm					
-4/25/2018 223', Circulate Surface Casing					
-4/26/2018 727', Drilling					
-4/27/2018 1,618', Drilling					
-4/28/2018 2,357', Drilling					
-4/29/2018 2,837', Drilling					
-4/30/2018 2,947', DST #2		2250			
5/1/2018 3,130', DST #3					
5/2/2018 3,130', Completed					
		2300		Sh: drk gry	
				Sh: ala	

The open-hole logging was performed by Mr. Casey Patterson with Gemini Wireline, LLC (Hays, KS). Logs included: Compensated Density Neutron, Dual Induction, Microresistivity, & Borehole Compensated Sonic

Formation tops and datums from the open-hole logs include the following:

Miss	2364	-1070
Kinderhook	2697	-1403
Hunton	2838	-1544
Maq	2868	-1574
Viola	2938	-1644
Simp. SD	3032	-1738
Arbuckle	3087	-1793
RTD	3131	-1837

Mud Engineer: Rick Hughes
Tester: Jimmy Ricketts



2350

2400

2450

2500

Sh: drk gry, scat soft

Sh: drk gry

Mississippian 2364' (-1070)

Dolo: off wh-tan-brn, fn-vry fn xln, poor int xln porosity, scat chalk

Dolo: off wh-tan-brn, fn-vry fn xln, foss, poor-fair int foss porosity, barren, chalky

Dolo: ala

Dolo: off wh-tan, fn xln, foss, fair int foss and int xln porosity, barren, chalky

Dolo: ala

Dolo: off wh-tan, fn xln, fair int xln porosity, barren, scat int bd glauc, chalky

Sh: drk gry-blk

Chert: off wh-gry, shrp, trip

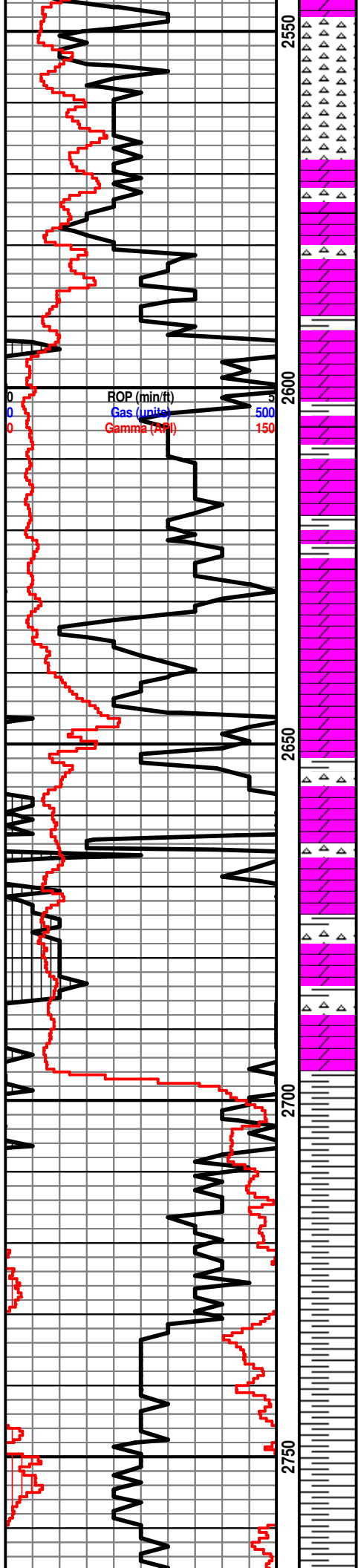
Chert: ala

Dolo: tan-brn, fn-sub xln, vry DNS, barren, scat sh: drk gry

Dolo: ala

Chert: off wh-gry, vry DNS, shrp, trip

Chert: ala



Chert: ala

Dolo: tan-gry, fn-sub xln, mostly DNS, scat sh: drk gry

Sh: lt-drk gry

Sh: drk gry-blk

Sh: ala

Dolo: tan-brn, fn xln, poor-fair int vug porosity, fair oil sat, VSSFO, sl odor

Dolo: tan-gry-brn, fn-sub xln, mostly DNS, scat sh: drk gry

Dolo: drk gry-brn, fn-sub xln, mostly DNS, NSFO

Dolo: ala, scat sh: drk gry

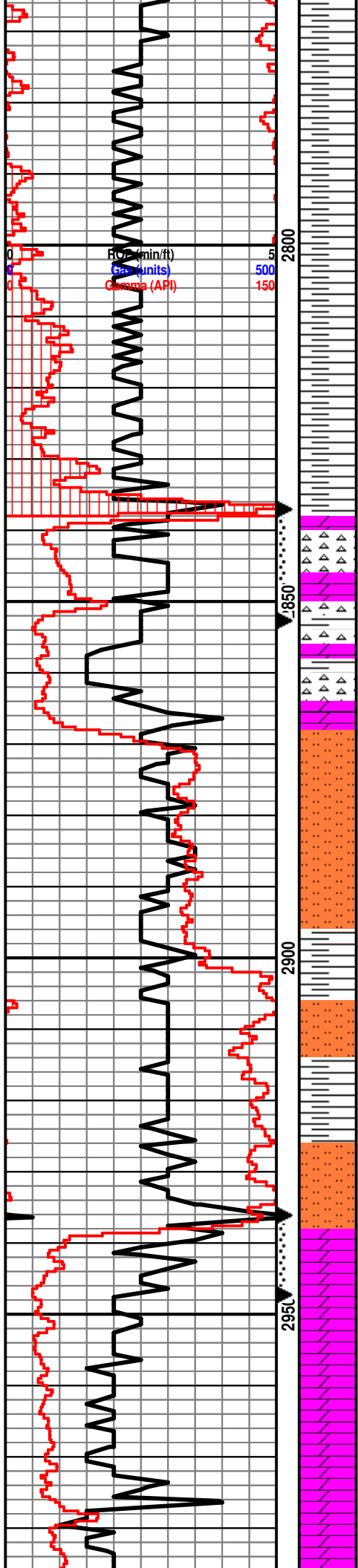
Kinderhook 2699' (-1405)

Sh: drk gry

Sh: ala

Sh: drk gry, scat soft

Sh: ala



Sh: lt-drk gry

Sh: drk gry

Sh: ala

Hunton 2836' (-1542)

Dolo: off wh-clr, fn-crs xln, good int xln porosity, fair-good oil sat, FSFO, fair-good odor

Dolo: off wh, fn-sub xln, mostly DNS, NSFO, no odor, scat sh: drk gry

Maquoketa 2872' (-1578)

Slstst: lt-drk gry

Sh: lt-drk gry

Slstst: lt-drk gry

Sh: drk gry

Sh: lt-drk gry

Viola 2935' (-1641)

Dolo: off wh-tan, md-crs xln, fair int xln porosity, fair-good oil sat, F-GSFO, good odor

Sh: drk gry-brn

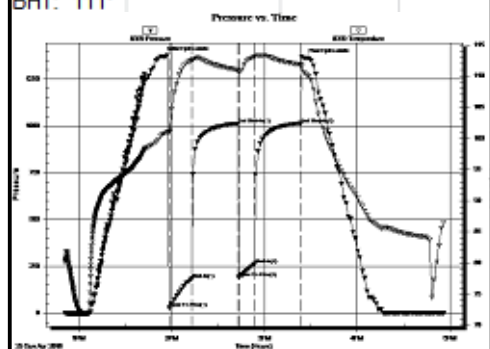
Dolo: off wh-brn, fn xln, poor-fair int xln porosity, sl oil stn, NSFO, hvy chert-off wh-brn

Dolo: ala, scat pyrite

Dolo: off wh-brn, vry fn-fn xln, poor int xln porosity, scat oil stn, NSFO, fnt odor, scat chert-off wh-brn

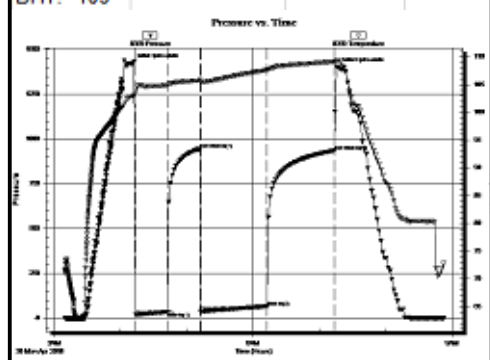
DST #1 2,837-2,853' (Hunton)

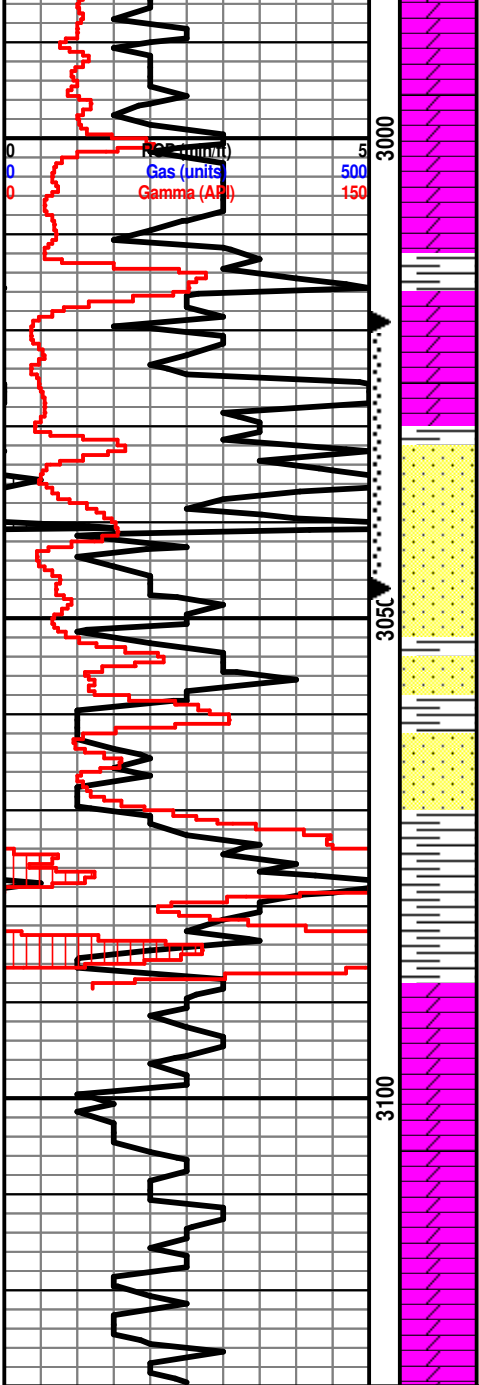
15"-30"-10"-30"
 IF: BOB in 4 minutes, no blow back on shut in
 FF: BOB in 4 minutes, no blow back on shut in
 Rec: 315' Mud Cut Water (5% M, 95% W)
 250' Heavy Mud Cut Water (35% M, 65% W)
 565' Total Fluid Recovery
 FP: 28-185, 192-263#
 SIP: 1,011-1,012#
 HP: 1,368-1,360#
 BHT: 111°



DST #2 2,936-2,947' Viola

30"-30"-60"-60"
 IF: weak blow built to 5", no blow back on shut in
 FF: weak blow built to 5", no blow back on shut in
 Rec: 125' Clean Oil (23° API)
 25' Heavy Oil Cut Mud (20% O, 80% M)
 150' Total Fluid Recovery
 FP: 18-34, 38-67#
 SIP: 944-936#
 HP: 1,422-1,401#
 BHT: 109°





Dolo: off wh-tan, fn-md xln, scat fair int xln porosity, scat oil stn, SSFO, sl odor

Dolo: off wh-lt gry, fn-md xln, poor int xln porosity, scat hvy tarry oil in porosity, SSFO, sl odor

Simpson Dolo 3012' (-1718)

Dolo: off wh-tan, fn-md xln, poor-fair int xln porosity, good oil sat, S-FSFO, fair-good odor

Dolo: off wh-lt brn, fn-md xln, fair int xln porosity, fair-good oil sat, VSSFO, sl odor

Simpson Sand 3031' (-1737)

Ss: qtz, off wh, fn-md grn, well rnd, poorly sorted, fairly well cemented, poor-fair hvy tarry oil, SSFO, sl odor

Ss: qtz, off wh, md grn, fairly well rnd, fair sorting, well cemented, fair oil stn, SSFO, fnt odor

Ss: qtz, off wh, fn-md grn, ang, poor sorting, well cemented, NSFO, hvy pyrite

Sh: drk gry-grn, scat chert

Arbuckle 3100' (-1806)

Dolo: tan-brn, fn-sub xln, vry DNS, NSFO

Dolo: ala, hvy chert-off wh

Dolo: tan-gry, fn-sub xln, DNS

DST #3 3,019-3,047' (Simpson Dolo. & Sd)

15"-30"-15"-30"

IF: BOB in 10 minutes, no blow back on shut in

FF: BOB in 10 minutes, no blow back on shut in

Rec: 310' Slight Oil & Water Cut Mud

(1% O, 29% W, 70% M)

65' Oil Cut Mud (4% O, 96% M)

375' Total Fluid Recovery

FP: 24-113, 118-185#

SIP: 1,044-1,036#

HP: 1,478-1,461#

BHT: 114°

