

KANSAS CORPORATION COMMISSION
OIL & GAS CONSERVATION DIVISION

TEMPORARY ABANDONMENT WELL APPLICATION

OPERATOR: License#
Name:
Address 1:
Address 2:
City: State: Zip:
Contact Person:
Phone:
Contact Person Email:
Field Contact Person:
Field Contact Person Phone:

API No. 15-
Spot Description:
Sec. Twp. S. R.
GPS Location: Lat: Long:
Datum: NAD27 NAD83 WGS84
County: Elevation:
Lease Name: Well #:
Well Type: Oil Gas OG WSW Other:
SWD Permit #: ENHR Permit #:
Gas Storage Permit #:
Spud Date: Date Shut-In:

Table with 7 columns: Conductor, Surface, Production, Intermediate, Liner, Tubing. Rows include Size, Setting Depth, Amount of Cement, Top of Cement, Bottom of Cement.

Casing Fluid Level from Surface: How Determined? Date:
Casing Squeeze(s): to w / sacks of cement, to w / sacks of cement. Date:
Do you have a valid Oil & Gas Lease? Yes No
Depth and Type: Junk in Hole at Tools in Hole at Casing Leaks: Yes No Depth of casing leak(s):
Type Completion: ALT. I ALT. II Depth of: DV Tool: w / sacks of cement Port Collar: w / sack of cement
Packer Type: Size: Inch Set at: Feet
Total Depth: Plug Back Depth: Plug Back Method:

Geological Data:

Table with 4 columns: Formation Name, Formation Top, Formation Base, Completion Information. Rows 1 and 2.

UNDER PENALTY OF PERJURY I HEREBY ATTEST THAT THE INFORMATION CONTAINED HEREIN IS TRUE AND CORRECT TO THE BEST OF MY KNOWLEDGE

Submitted Electronically

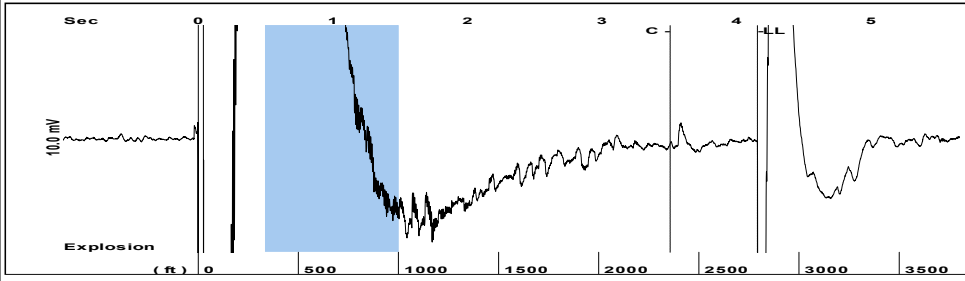
Do NOT Write in This Space - KCC USE ONLY
Date Tested: Results: Date Plugged: Date Repaired: Date Put Back in Service:
Review Completed by: Comments:
TA Approved: Yes Denied Date:

Mail to the Appropriate KCC Conservation Office:

Table with 2 columns: Office Address, Phone. Rows for District Office #1, #2, #3, #4.

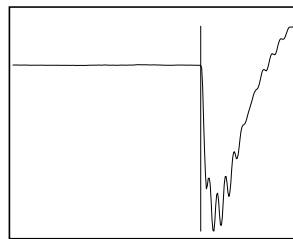
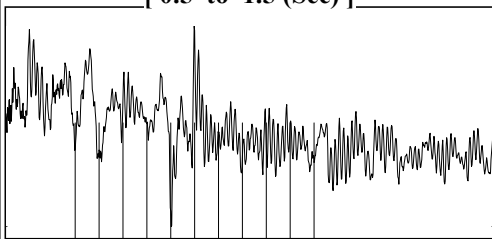


Group: Stratakan Well: KC#4 (acquired on: 08/25/20 10:08:11)



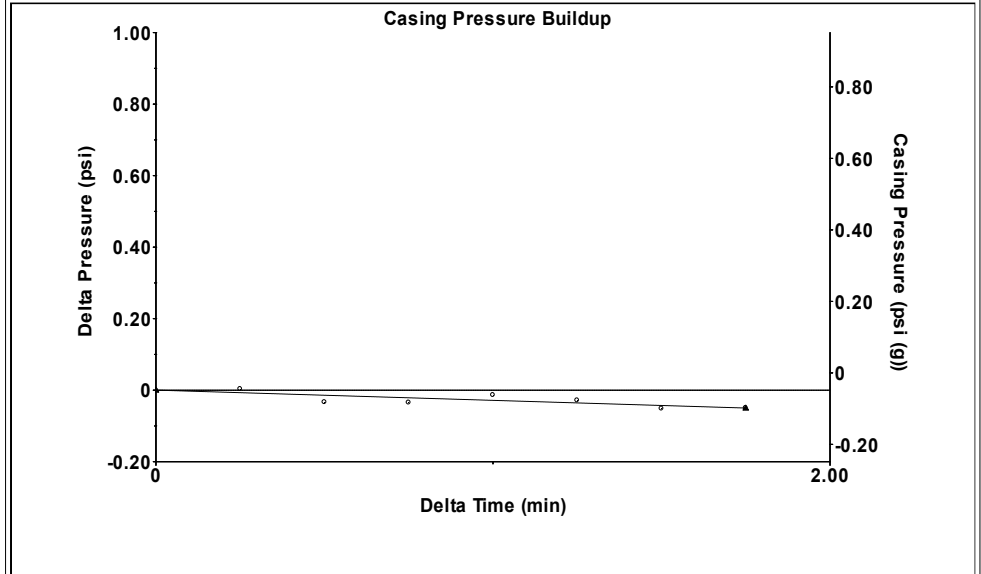
Filter Type High Pass Automatic Collar Count Yes Time 4.157 sec
 Manual Acoustic Velo 1293.88 ft/s Manual JTS/sec 20.4082 Joints 88.072 Jts
 Depth 2791.88 ft

[0.5 to 1.5 (Sec)]



Analysis Method: Automatic

Group: Stratakan Well: KC#4 (acquired on: 08/25/20 10:08:11)

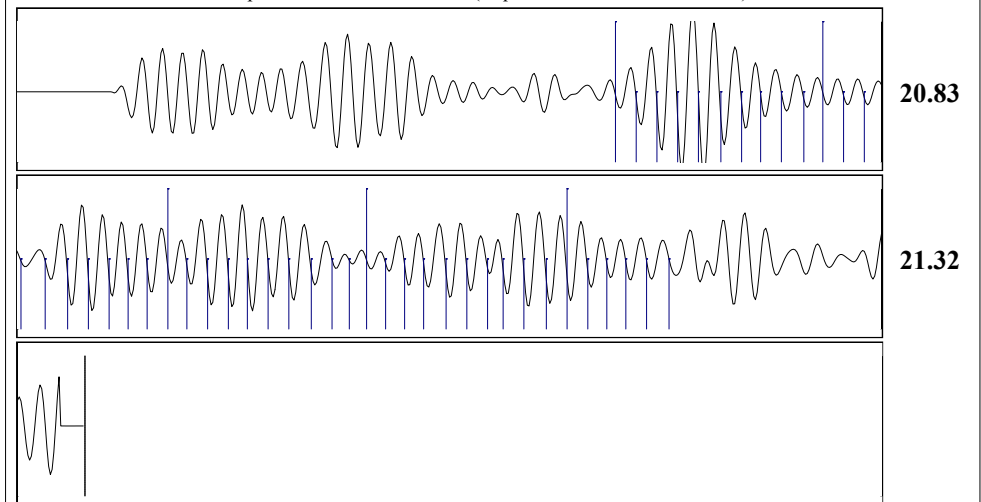


Change in Pressure -0.05 psi PT 14970
 Change in Time 1.75 min Range 0 - ? psi

Group: Stratakan Well: KC#4 (acquired on: 08/25/20 10:08:11)

Production	Potential	Casing Pressure	Static
Current	- * - BBL/D	-0.0 psi (g)	
Oil - * -	- * - BBL/D	Casing Pressure Buildup	Oil Column Height
Water - * -	- * - Mscf/D	-0.050 psi	MD 0 ft
Gas - * -		1.75 min	
		Gas/Liquid Interface Pressure	Water Column Height
		0.9 psi (g)	MD - * - ft
IPR Method	Vogel	Liquid Level Depth	Pump Intake Depth
PBHP/SBHP	- * -	2791.88 ft	- * - ft
Production Efficiency	0.0	Formation Depth	
		5460.00 ft	
Oil 40 deg.API			Static BHP
Water 1.05 Sp.Gr.H2O			1214.0 psi (g)
Gas 0.65 Sp.Gr.AIR			
Acoustic Velocity 1343.22 ft/s			

Group: Stratakan Well: KC#4 (acquired on: 08/25/20 10:08:11)



Acoustic Velocity 1343.22 ft/s Joints counted 45
 Joints Per Second 21.1864 jts/sec Joints to liquid level 88.072
 Depth to liquid level 2791.88 ft Filter Width 18.4082 22.4082
 Automatic Collar Count Yes Time to 1st Collar 1.384 3.508

September 01, 2020

Justin Prater
StrataKan Exploration, LLC
100 S MAIN ST
PLAINVILLE, KS 67663-2234

Re: Temporary Abandonment
API 15-025-10109-00-00
HARPER RANCH KC4
NE/4 Sec.11-34S-21W
Clark County, Kansas

Dear Justin Prater :

"Your temporary abandonment (TA) application for the well listed above has been approved. In accordance with K.A.R. 82-3-111 the TA status of this well will expire 09/01/2021.

- * If you return this well to service or plug it, please notify the District Office.
- * If you sell this well you are required to file a Transfer of Operator form, T-1.
- * If the well will remain temporarily abandoned, you must submit a new TA application, CP-111, before 09/01/2021.

You may contact me at the number above if you have questions.

Very truly yours,

Michael Maier"