

KANSAS CORPORATION COMMISSION
OIL & GAS CONSERVATION DIVISION

TEMPORARY ABANDONMENT WELL APPLICATION

OPERATOR: License#
Name:
Address 1:
Address 2:
City: State: Zip:
Contact Person:
Phone:
Contact Person Email:
Field Contact Person:
Field Contact Person Phone:

API No. 15-
Spot Description:
Sec. Twp. S. R.
GPS Location: Lat: Long:
Datum: NAD27 NAD83 WGS84
County: Elevation:
Lease Name: Well #:
Well Type: Oil Gas OG WSW Other:
SWD Permit #: ENHR Permit #:
Gas Storage Permit #:
Spud Date: Date Shut-In:

Table with 7 columns: Conductor, Surface, Production, Intermediate, Liner, Tubing. Rows include Size, Setting Depth, Amount of Cement, Top of Cement, Bottom of Cement.

Casing Fluid Level from Surface: How Determined? Date:
Casing Squeeze(s): to w / sacks of cement, to w / sacks of cement. Date:
Do you have a valid Oil & Gas Lease? Yes No
Depth and Type: Junk in Hole at Tools in Hole at Casing Leaks: Yes No Depth of casing leak(s):
Type Completion: ALT. I ALT. II Depth of: DV Tool: w / sacks of cement Port Collar: w / sack of cement
Packer Type: Size: Inch Set at: Feet
Total Depth: Plug Back Depth: Plug Back Method:

Geological Data:

Table with 4 columns: Formation Name, Formation Top, Formation Base, Completion Information. Rows 1 and 2.

UNDER PENALTY OF PERJURY I HEREBY ATTEST THAT THE INFORMATION CONTAINED HEREIN IS TRUE AND CORRECT TO THE BEST OF MY KNOWLEDGE

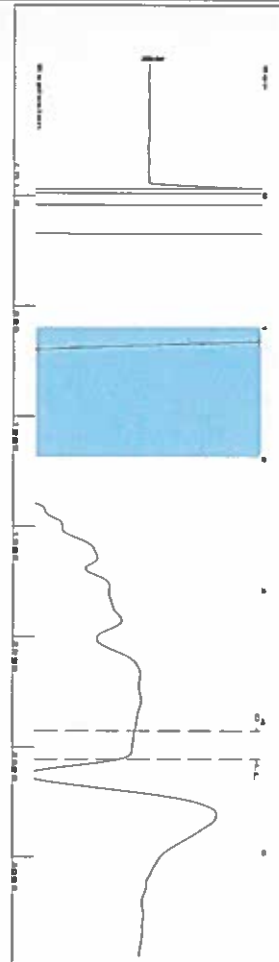
Submitted Electronically

Do NOT Write in This Space - KCC USE ONLY
Date Tested: Results: Date Plugged: Date Repaired: Date Put Back in Service:
Review Completed by: Comments:
TA Approved: Yes Denied Date:

Mail to the Appropriate KCC Conservation Office:

Table with 3 columns: District Office, Address, Phone. Rows for District Office #1, #2, #3, #4.

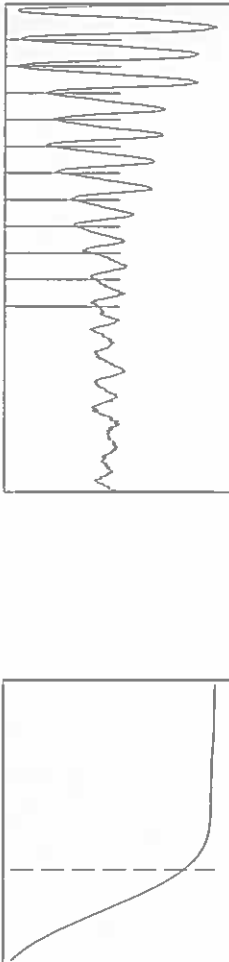
Group: SUBLETTE Well: BAUGHMAN C-5 (acquired on: 08/18/20 12:44:49)



Filter Type High Pass Automatic Collar Count Yes
 Manual Acoustic Veloc: 181.3 ft/s Manual JTS/Sec 18.2815

Time 4.293 sec
 Joints 79.1649 Jts
 Depth 2557.70 ft

[1.0 to 2.0 (Sec)]

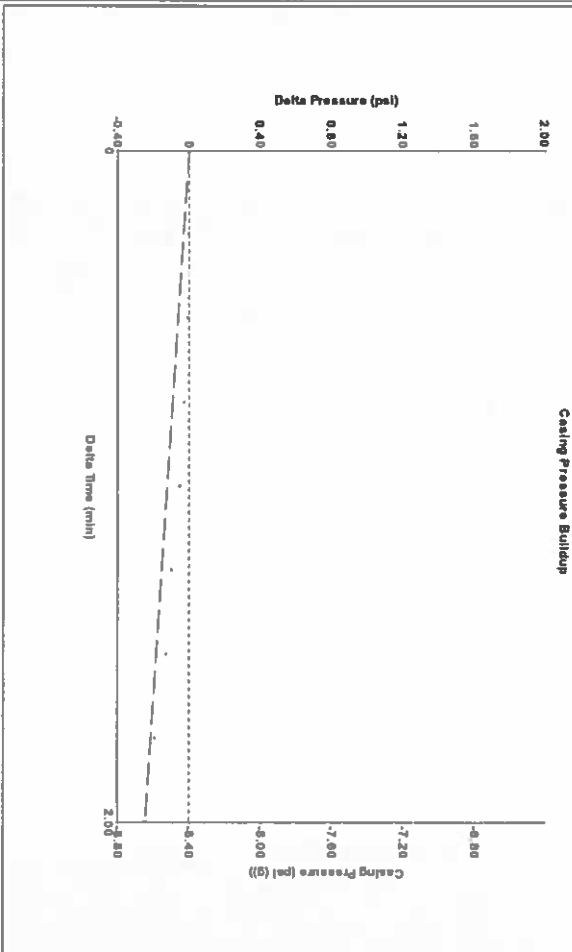


Analysis Method: Automatic

Group: SUBLETTE Well: BAUGHMAN C-5 (acquired on: 08/18/20 12:44:49)

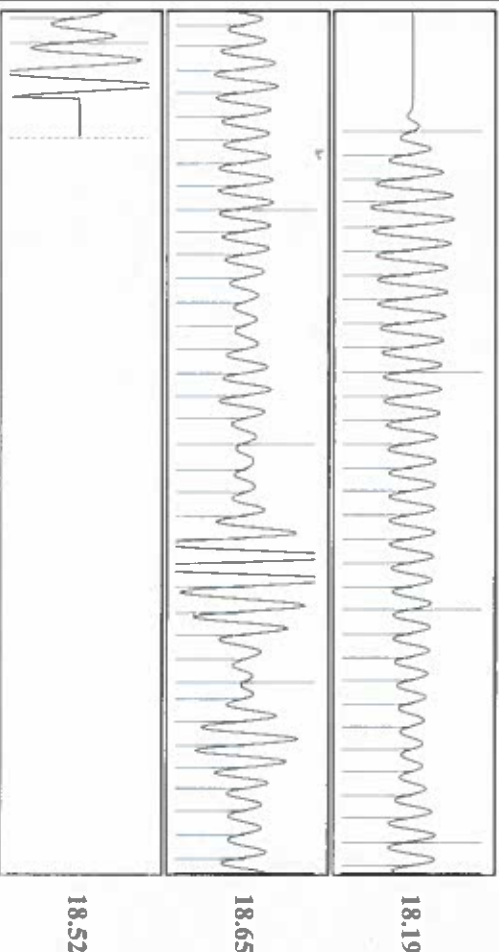
Production	Potential	Casing Pressure	Producing
Oil ---	BBL/D ---	-8.4 psi (g)	Pump Intake 154.9 psi (g)
Water ---	BBL/D ---	Casing Pressure Buildup -0.244 psi	Producing BHP 137.1 psi (g)
Gas ---	Mscf/D ---	2.00 min	Static BHP --- psi (g)
IPR Method Vogel	Gas/Liquid Interface Pressure -8.0 psi (g)	Annular Gas Flow 0 Mscf/D	% Liquid 100 %
PBIHP/SBHP ---	Production Efficiency 0.0	Liquid Level Depth 2557.70 ft	
Oil 40 deg API		Pump Intake Depth 3037.00 ft	
Water 1.05 Sp.Gr./H ₂ O		Formation Depth 2984.00 ft	
Gas 0.81 Sp.Gr./AIR			
Acoustic Velocity 1191.57 ft/s			
Formation Submergence			
Total Gaseous Liquid Column HT (TVD) 479 ft			
Equivalent Gas Free Liquid HT (TVD) 479 ft			

Group: SUBLETTE Well: BAUGHMAN C-5 (acquired on: 08/18/20 12:44:49)



Change in Pressure -0.24 psi PT14679
 Change in Time 2.00 min Range 0 - ? psi

Group: SUBLETTE Well: BAUGHMAN C-5 (acquired on: 08/18/20 12:44:49)



Acoustic Velocity 1191.57 ft/s Joints counted 70
 Joints Per Second 18.4405 Jts/sec Joints to liquid level 79.1649
 Depth to liquid level 2557.7 ft Filter Width 16.2815
 Automatic Collar Count Yes Time to 1st Collar 0.276

September 01, 2020

Katherine McClurkan
Merit Energy Company, LLC
13727 Noel Road, Suite 1200
Dallas, TX 75240

Re: Temporary Abandonment
API 15-081-21457-00-01
Bachman C 5
SW/4 Sec.35-27S-34W
Haskell County, Kansas

Dear Katherine McClurkan:

"Your temporary abandonment (TA) application for the well listed above has been approved. In accordance with K.A.R. 82-3-111 the TA status of this well will expire 09/01/2021.

- * If you return this well to service or plug it, please notify the District Office.
- * If you sell this well you are required to file a Transfer of Operator form, T-1.
- * If the well will remain temporarily abandoned, you must submit a new TA application, CP-111, before 09/01/2021.

You may contact me at the number above if you have questions.

Very truly yours,

Michael Maier"