

KANSAS CORPORATION COMMISSION
OIL & GAS CONSERVATION DIVISION

Form must be Typed
Form must be signed

TEMPORARY ABANDONMENT WELL APPLICATION

All blanks must be complete

OPERATOR: License#
Name:
Address 1:
Address 2:
City: State: Zip:
Contact Person:
Phone:
Contact Person Email:
Field Contact Person:
Field Contact Person Phone:

API No. 15-
Spot Description:
Sec. Twp. S. R.
feet from N / S Line of Section
feet from E / W Line of Section
GPS Location: Lat: , Long:
Datum: NAD27 NAD83 WGS84
County: Elevation: GL KB
Lease Name: Well #:
Well Type: (check one) Oil Gas OG WSW Other:
SWD Permit #: ENHR Permit #:
Gas Storage Permit #:
Spud Date: Date Shut-In:

Table with 7 columns: Conductor, Surface, Production, Intermediate, Liner, Tubing. Rows include Size, Setting Depth, Amount of Cement, Top of Cement, Bottom of Cement.

Casing Fluid Level from Surface: How Determined? Date:
Casing Squeeze(s): to w / sacks of cement, to w / sacks of cement. Date:
Do you have a valid Oil & Gas Lease? Yes No
Depth and Type: Junk in Hole at Tools in Hole at Casing Leaks: Yes No Depth of casing leak(s):
Type Completion: ALT. I ALT. II Depth of: DV Tool: w / sacks of cement Port Collar: w / sack of cement
Packer Type: Size: Inch Set at: Feet
Total Depth: Plug Back Depth: Plug Back Method:

Geological Data:

Table with 4 columns: Formation Name, Formation Top, Formation Base, Completion Information. Rows 1 and 2.

UNDER PENALTY OF PERJURY I HEREBY ATTEST THAT THE INFORMATION CONTAINED HEREIN IS TRUE AND CORRECT TO THE BEST OF MY KNOWLEDGE

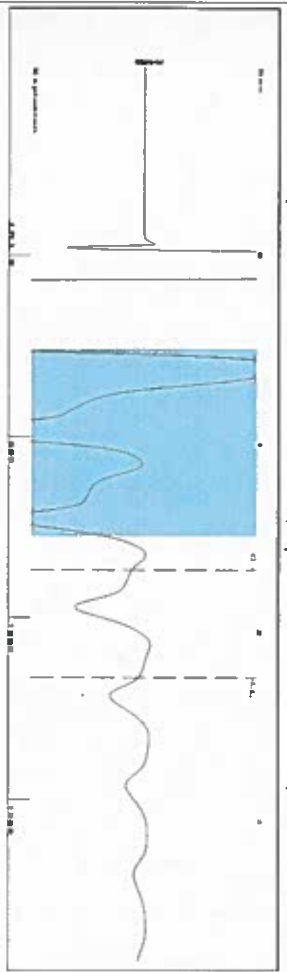
Submitted Electronically

Do NOT Write in This Space - KCC USE ONLY
Date Tested: Results: Date Plugged: Date Repaired: Date Put Back in Service:
Review Completed by: Comments:
TA Approved: Yes Denied Date:

Mail to the Appropriate KCC Conservation Office:

Table with 2 columns: Office Address, Phone. Rows for KCC District Office #1, #2, #3, #4.

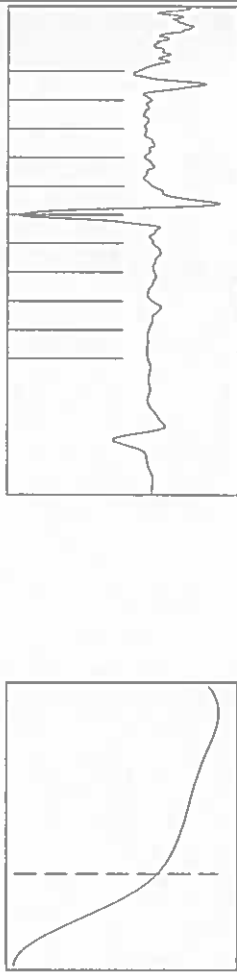
Group: SUBLETTE Well: Becker C-2-10 (acquired on: 08/14/20 13:35:54)



Filter Type High Pass
Manual Acoustic Velo 1070.95 n/s
Automatic Collar Count Yes
Manual JTS/sec 16.8919

Time 2.24 sec
Joints 36.7213 Jts
Depth 1164.07 ft

0.5 to 1.5 (Sec)



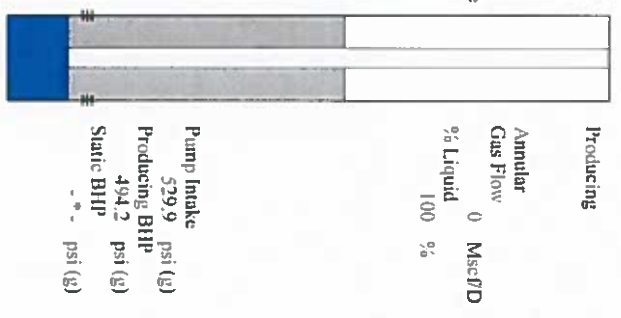
Analysis Method: Automatic

Group: SUBLETTE Well: Becker C-2-10 (acquired on: 08/14/20 13:35:54)

Production	Potential	Casing Pressure	Producing
Oil - -	BBL/D - -	-1.5 psi (g)	Annular Gas Flow
Water - -	BBL/D - -	-0.827 psi	% Liquid 100 %
Gas - -	Mscf/D - -	2.00 min	Mscf/D
JPR Method PBHP/SBHP	Vogel - -	Gas/Liquid Interface Pressure -1.0 psi (g)	
Production Efficiency 0.0		Liquid Level Depth 1164.07 ft	
Oil 40 deg API		Pump Intake Depth 2740.00 ft	
Water 1.05 Sp.Gr.H2O		Formation Depth 2630.00 ft	
Gas 0.93 Sp.Gr.AIR			
Acoustic Velocity 1039.34 n/s			

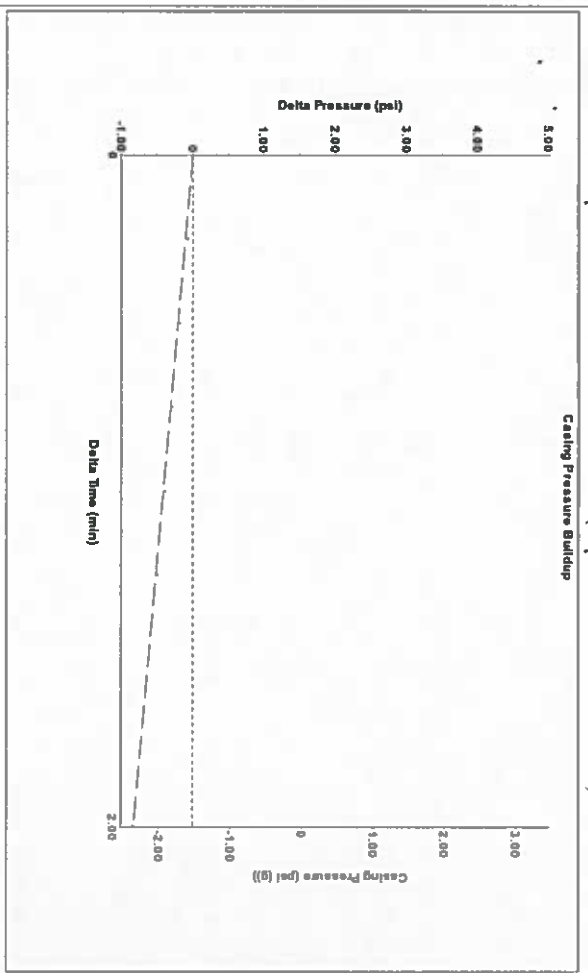
Formation Submergence
Total Gaseous Liquid Column HT (TVD) 1576 ft
Equivalent Gas Free Liquid HT (TVD) 1576 ft

8/14/2020



Pump Intake 529.9 psi (g)
Producing BHP 494.2 psi (g)
Static BHP - - psi (g)

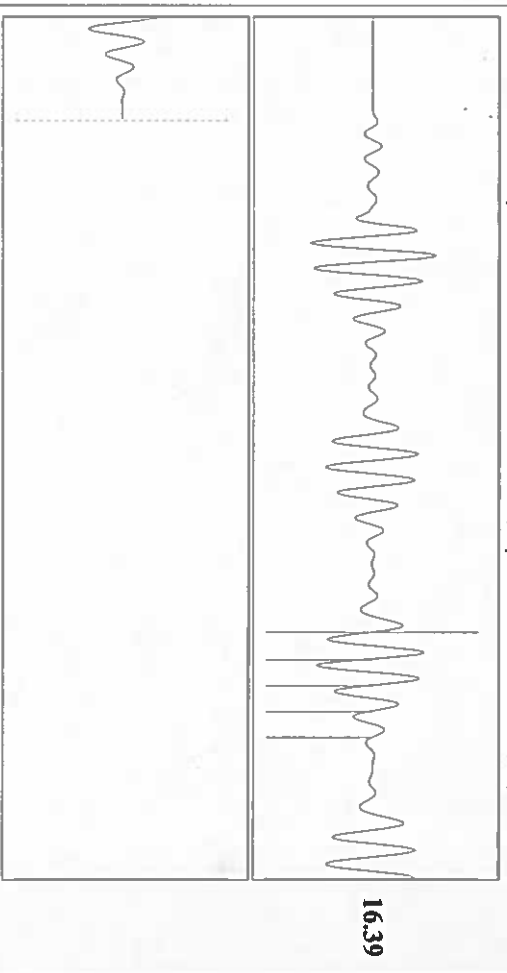
Group: SUBLETTE Well: Becker C-2-10 (acquired on: 08/14/20 13:35:54)



Change in Pressure -0.83 psi
Change in Time 2.00 min

PT14679 Range 0 - 7 psi

Group: SUBLETTE Well: Becker C-2-10 (acquired on: 08/14/20 13:35:54)



Acoustic Velocity 1039.34 n/s
Joints Per Second 16.3934 Jts/sec
Depth to liquid level 1164.07 ft
Automatic Collar Count Yes

Joints counted 4
Joints to liquid level 36.7213
Filter Width 14.8919
Time to 1st Collar 1.428

September 01, 2020

Katherine McClurkan
Merit Energy Company, LLC
1400 Cemetery Road South
DALLAS, TX 75240-7362

Re: Temporary Abandonment
API 15-175-21811-00-00
Becker C 2-10
NE/4 Sec.10-31S-33W
Seward County, Kansas

Dear Katherine McClurkan:

"Your temporary abandonment (TA) application for the well listed above has been approved. In accordance with K.A.R. 82-3-111 the TA status of this well will expire 09/01/2021.

- * If you return this well to service or plug it, please notify the District Office.
- * If you sell this well you are required to file a Transfer of Operator form, T-1.
- * If the well will remain temporarily abandoned, you must submit a new TA application, CP-111, before 09/01/2021.

You may contact me at the number above if you have questions.

Very truly yours,

Michael Maier"