

KANSAS CORPORATION COMMISSION
OIL & GAS CONSERVATION DIVISION

TEMPORARY ABANDONMENT WELL APPLICATION

OPERATOR: License#
Name:
Address 1:
Address 2:
City: State: Zip:
Contact Person:
Phone:
Contact Person Email:
Field Contact Person:
Field Contact Person Phone:

API No. 15-
Spot Description:
Sec. Twp. S. R.
GPS Location: Lat: Long:
Datum: NAD27 NAD83 WGS84
County: Elevation:
Lease Name: Well #:
Well Type: Oil Gas OG WSW Other:
SWD Permit #: ENHR Permit #:
Gas Storage Permit #:
Spud Date: Date Shut-In:

Table with 7 columns: Conductor, Surface, Production, Intermediate, Liner, Tubing. Rows include Size, Setting Depth, Amount of Cement, Top of Cement, Bottom of Cement.

Casing Fluid Level from Surface: How Determined? Date:
Casing Squeeze(s): to w / sacks of cement, to w / sacks of cement. Date:
Do you have a valid Oil & Gas Lease? Yes No
Depth and Type: Junk in Hole at Tools in Hole at Casing Leaks: Yes No Depth of casing leak(s):
Type Completion: ALT. I ALT. II Depth of: DV Tool: w / sacks of cement Port Collar: w / sack of cement
Packer Type: Size: Inch Set at: Feet
Total Depth: Plug Back Depth: Plug Back Method:

Geological Date:

Table with 4 columns: Formation Name, Formation Top, Formation Base, Completion Information. Rows 1 and 2.

UNDER PENALTY OF PERJURY I HEREBY ATTEST THAT THE INFORMATION CONTAINED HEREIN IS TRUE AND CORRECT TO THE BEST OF MY KNOWLEDGE

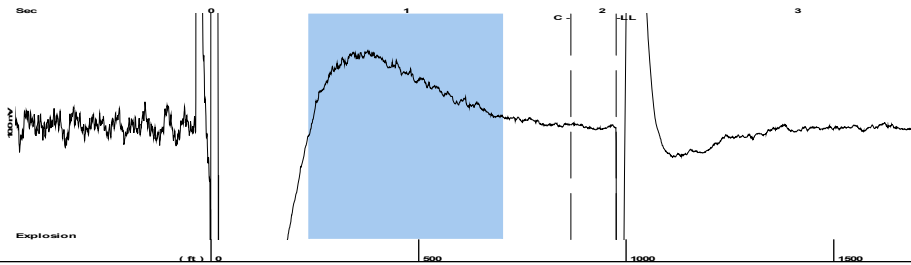
Submitted Electronically

Do NOT Write in This Space - KCC USE ONLY
Date Tested: Results: Date Plugged: Date Repaired: Date Put Back in Service:
Review Completed by: Comments:
TA Approved: Yes Denied Date:

Mail to the Appropriate KCC Conservation Office:

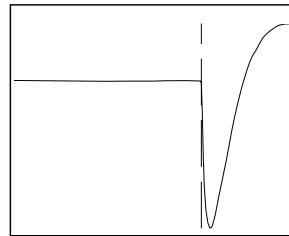
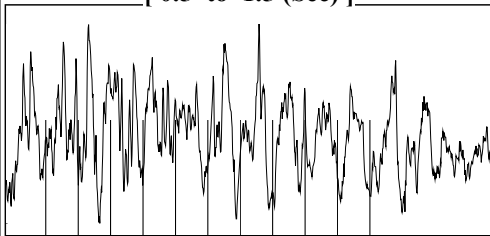
Map of Kansas with 4 numbered districts. Table with 2 columns: Office Name/Address, Phone Number.

Group: G Miller Well: G Miller 27 (acquired on: 08/25/20 08:51:38)



Filter Type High Pass Automatic Collar Count Yes Time 2.071 sec
 Manual Acoustic Velo 951.952 ft/s Manual JTS/sec 15.015 Joints 30.7753 Jts
 Depth 975.58 ft

[0.5 to 1.5 (Sec)]



Analysis Method: Automatic

Group: G Miller Well: G Miller 27 (acquired on: 08/25/20 08:51:38)

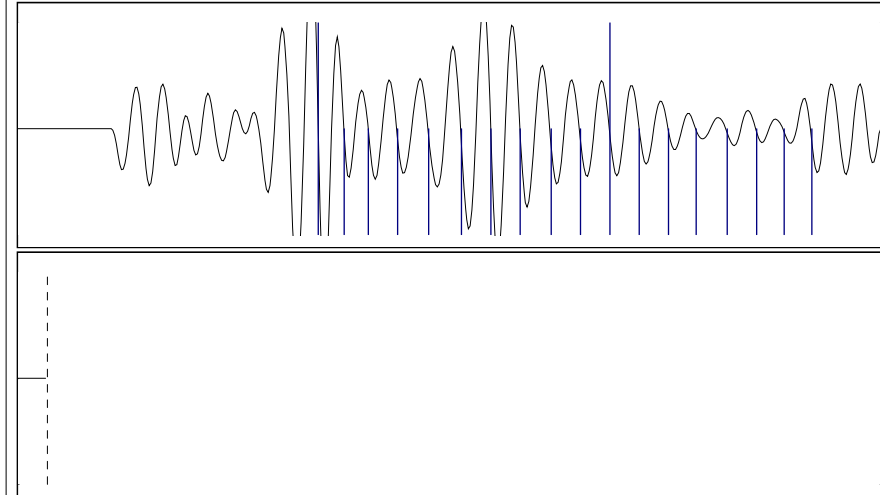


Change in Pressure 0.00 psi PT6067
 Range 0 - ? psi
 Change in Time 0.00 min

Group: G Miller Well: G Miller 27 (acquired on: 08/25/20 08:51:38)

Production	Potential	Casing Pressure		Producing
Current	- * - BBL/D	0.0 psi (g)		Annular
Oil - * -	- * - BBL/D	Casing Pressure Buildup		Gas Flow
Water - * -	- * - Mscf/D	- * - psi		- * - Mscf/D
Gas - * -		- * - min		% Liquid
		Gas/Liquid Interface Pressure		100 %
IPR Method	Vogel	0.5 psi (g)		
PBHP/SBHP	- * -			
Production Efficiency	0.0	Liquid Level Depth		
		975.58 ft		
Oil 36 deg.API		Pump Intake Depth		
Water 1.08 Sp.Gr.H2O		- * - ft		
Gas 1.02 Sp.Gr.AIR		Formation Depth		
		3145.00 ft		
Acoustic Velocity 942.133 ft/s				
		Pump Intake		
		- * - psi (g)		
Formation Submergence		Producing BHP		
Total Gaseous Liquid Column HT (TVD) 2169 ft		1015.0 psi (g)		
Equivalent Gas Free Liquid HT (TVD) 2169 ft		Static BHP		
		- * - psi (g)		
Acoustic Test				

Group: G Miller Well: G Miller 27 (acquired on: 08/25/20 08:51:38)



Acoustic Velocity 942.133 ft/s Joints counted 17
 Joints Per Second 14.8601 jts/sec Joints to liquid level 30.7753
 Depth to liquid level 975.579 ft Filter Width 13.015 17.015
 Automatic Collar Count Yes Time to 1st Collar 0.696 1.84

September 08, 2020

Gavin Ramsay
Fossil Creek Energy, LLC
PO BOX 915
RUSSELL, KS 67665

Re: Temporary Abandonment
API 15-167-22438-00-01
G MILLER 27-31
NE/4 Sec.31-14S-13W
Russell County, Kansas

Dear Gavin Ramsay:

"Your temporary abandonment (TA) application for the well listed above has been approved. In accordance with K.A.R. 82-3-111 the TA status of this well will expire .

- * If you return this well to service or plug it, please notify the District Office.
- * If you sell this well you are required to file a Transfer of Operator form, T-1.
- * If the well will remain temporarily abandoned, you must submit a new TA application, CP-111, before .

You may contact me at the number above if you have questions.

Very truly yours,

RICHARD WILLIAMS"