

KANSAS CORPORATION COMMISSION
OIL & GAS CONSERVATION DIVISION

TEMPORARY ABANDONMENT WELL APPLICATION

OPERATOR: License#
Name:
Address 1:
Address 2:
City: State: Zip:
Contact Person:
Phone:
Contact Person Email:
Field Contact Person:
Field Contact Person Phone:

API No. 15-
Spot Description:
Sec. Twp. S. R.
GPS Location: Lat, Long
Datum: NAD27, NAD83, WGS84
County: Elevation:
Lease Name: Well #:
Well Type: Oil, Gas, OG, WSW, Other
SWD Permit #: ENHR Permit #:
Gas Storage Permit #:
Spud Date: Date Shut-In:

Table with 7 columns: Conductor, Surface, Production, Intermediate, Liner, Tubing. Rows include Size, Setting Depth, Amount of Cement, Top of Cement, Bottom of Cement.

Casing Fluid Level from Surface: How Determined? Date:
Casing Squeeze(s): to w / sacks of cement, to w / sacks of cement. Date:
Do you have a valid Oil & Gas Lease? Yes No
Depth and Type: Junk in Hole at Tools in Hole at Casing Leaks: Yes No Depth of casing leak(s):
Type Completion: ALT. I ALT. II Depth of: DV Tool: w / sacks of cement Port Collar: w / sack of cement
Packer Type: Size: Inch Set at: Feet
Total Depth: Plug Back Depth: Plug Back Method:

Geological Data:

Table with 4 columns: Formation Name, Formation Top, Formation Base, Completion Information. Rows 1 and 2.

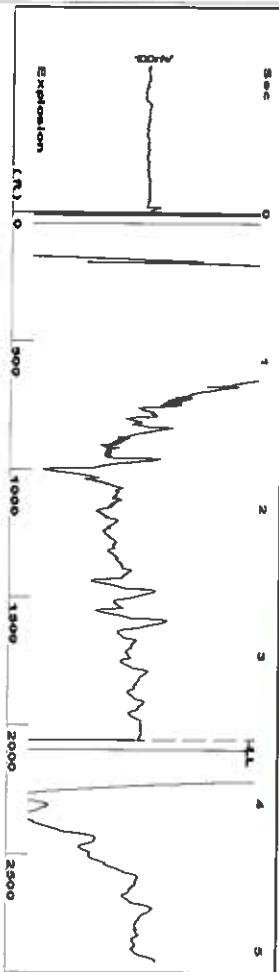
UNDER PENALTY OF PERJURY I HEREBY ATTEST THAT THE INFORMATION CONTAINED HEREIN IS TRUE AND CORRECT TO THE BEST OF MY KNOWLEDGE

Submitted Electronically

Do NOT Write in This Space - KCC USE ONLY
Date Tested: Results: Date Plugged: Date Repaired: Date Put Back in Service:
Review Completed by: Comments:
TA Approved: Yes Denied Date:

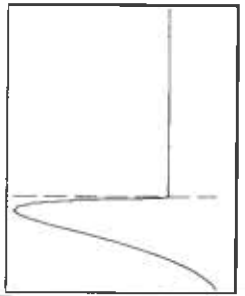
Mail to the Appropriate KCC Conservation Office:

Table with 2 columns: Office Address, Phone. Rows for District Office #1, #2, #3, #4.



Time 3.576 sec
 Joints 64.8644 Jis
 Depth 2056.20 ft

Liquid level calculated with
 user supplied Acoustic Velocity
 Acoustic Velocity 1150 ft/s



Analysis Method: Acoustic Velocity

Group: Oxy USA Ulysses Well: KU 6-1 (acquired on: 09/17/20 11:52:07)

Production	Potential	Casing Pressure	Producing
Current	Oil	12472.2 psi (g)	Annular
Water	Water	8551.46 psi	Gas Flow
Gas	Gas	0.50 min	% Liquid
IPR Method	Production Efficiency	Gas/Liquid Interface Pressure	100 %
PBHP/SBHP		12674.7 psi (g)	
		Liquid Level Depth	
		2056.20 ft	
		Tubing Intake Depth	
		5781.00 ft	
		Formation Depth	
		5744.00 ft	
		Acoustic Velocity	
		1150 ft/s	



Formation Submergence 3688 ft
 Total Gaseous Liquid Column HT (TV/D) 3688 ft
 Equivalent Gas Free Liquid HT (TV/D) 3688 ft
 Acoustic Test
 Tim Frydendall-Fluid level Technician

NO PRESSURE DATA AVAILABLE

Change in Pressure -8551.46 psi PT9522
 Change in Time 0.50 min Range 0 - 7 psi

Group: Oxy USA Ulysses Well: KU 6-1 (acquired on: 09/17/20 11:52:07)

Entered Acoustic Velocity for Liquid Level depth determination

September 29, 2020

Katherine McClurkan
Merit Energy Company, LLC
446 South Road M
Dallas, TX 75240

Re: Temporary Abandonment
API 15-187-21079-00-01
KU 6-I20-29-39
SE/4 Sec.20-29S-39W
Stanton County, Kansas

Dear Katherine McClurkan:

"Your temporary abandonment (TA) application for the well listed above has been approved. In accordance with K.A.R. 82-3-111 the TA status of this well will expire 09/29/2021.

- * If you return this well to service or plug it, please notify the District Office.
- * If you sell this well you are required to file a Transfer of Operator form, T-1.
- * If the well will remain temporarily abandoned, you must submit a new TA application, CP-111, before 09/29/2021.

You may contact me at the number above if you have questions.

Very truly yours,

Michael Maier"