

KANSAS CORPORATION COMMISSION
OIL & GAS CONSERVATION DIVISION

TEMPORARY ABANDONMENT WELL APPLICATION

OPERATOR: License#
Name:
Address 1:
Address 2:
City: State: Zip:
Contact Person:
Phone:
Contact Person Email:
Field Contact Person:
Field Contact Person Phone:

API No. 15-
Spot Description:
Sec. Twp. S. R.
GPS Location: Lat: Long:
Datum: NAD27 NAD83 WGS84
County: Elevation:
Lease Name: Well #:
Well Type: Oil Gas OG WSW Other:
SWD Permit #: ENHR Permit #:
Gas Storage Permit #:
Spud Date: Date Shut-In:

Table with 7 columns: Conductor, Surface, Production, Intermediate, Liner, Tubing. Rows include Size, Setting Depth, Amount of Cement, Top of Cement, Bottom of Cement.

Casing Fluid Level from Surface: How Determined? Date:
Casing Squeeze(s): to w / sacks of cement, to w / sacks of cement. Date:
Do you have a valid Oil & Gas Lease? Yes No
Depth and Type: Junk in Hole at Tools in Hole at Casing Leaks: Yes No Depth of casing leak(s):
Type Completion: ALT. I ALT. II Depth of: DV Tool: w / sacks of cement Port Collar: w / sack of cement
Packer Type: Size: Inch Set at: Feet
Total Depth: Plug Back Depth: Plug Back Method:

Geological Data:

Table with 4 columns: Formation Name, Formation Top, Formation Base, Completion Information. Rows 1 and 2.

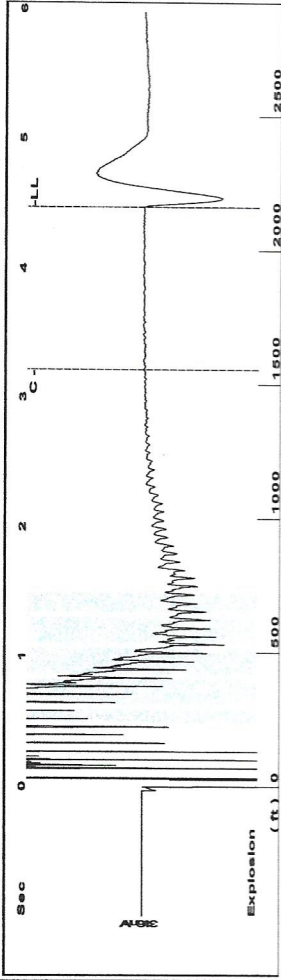
UNDER PENALTY OF PERJURY I HEREBY ATTEST THAT THE INFORMATION CONTAINED HEREIN IS TRUE AND CORRECT TO THE BEST OF MY KNOWLEDGE

Submitted Electronically

Do NOT Write in This Space - KCC USE ONLY
Date Tested: Results: Date Plugged: Date Repaired: Date Put Back in Service:
Review Completed by: Comments:
TA Approved: Yes Denied Date:

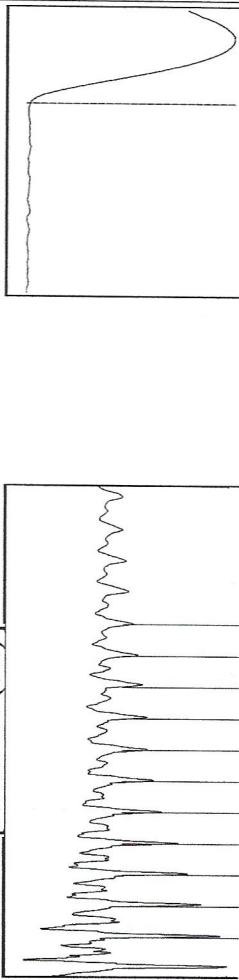
Mail to the Appropriate KCC Conservation Office:

Table with 2 columns: Office Address, Phone. Rows for District Office #1, #2, #3, #4.



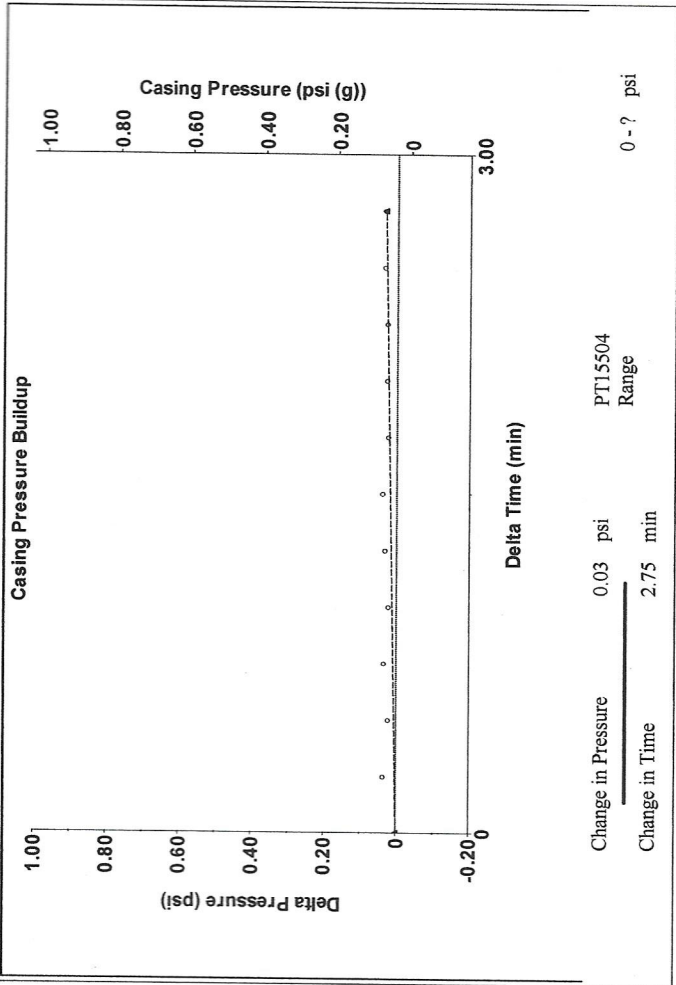
Filter Type High Pass Automatic Collar Count Yes Time 4.471 sec
 Manual Acoustic Veloc 981.505 ft/s Manual JTS/sec 15.674 Joints 68.9969 Jts
 Depth 2160.29 ft

0.5 to 1.5 (Sec)

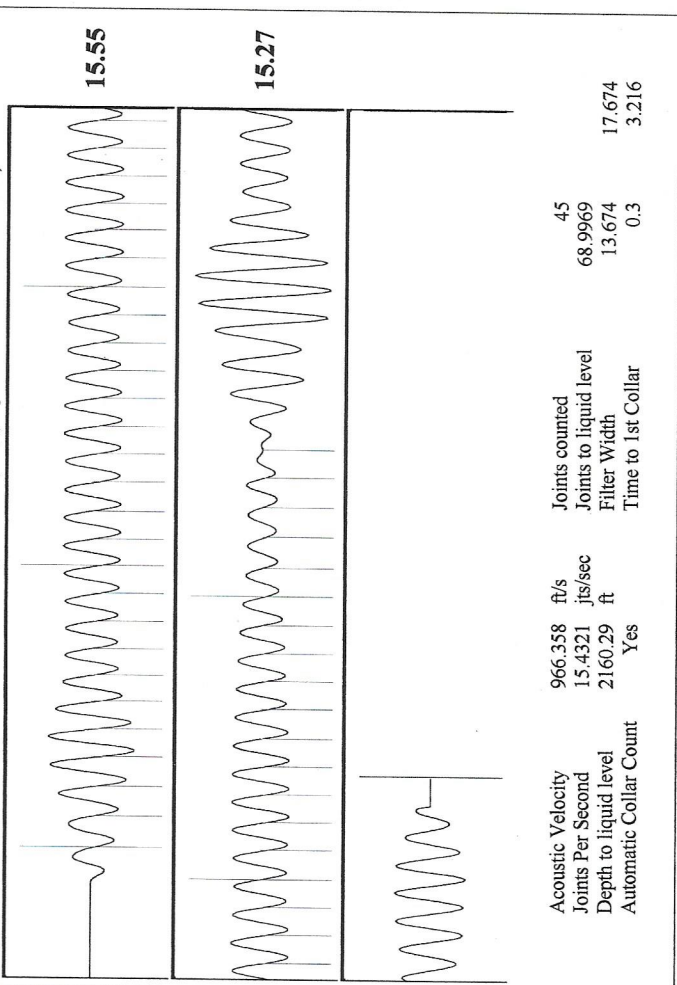


Analysis Method: Automatic

Production Current	Oil 0	Potential - * - BBL/D	Casing Pressure 0.0 psi (g)	Producing	Amnular Gas Flow 0 Mscf/D
Water 0	- * - BBL/D	Casing Pressure Buildup 0.033 psi	Change in Pressure 0.03 psi	% Liquid 100 %	Pump Intake 1125.8 psi (g)
Gas 0.0	- * - Mscf/D	Gas/Liquid Interface Pressure 1.2 psi (g)	Change in Time 2.75 min		Producing BHP 939.4 psi (g)
IPR Method Vogel		Liquid Level Depth 2160.29 ft			Static BHP - * - psi (g)
PBHP/SBHP - * -		Pump Intake Depth 4634.00 ft			
Production Efficiency 0.0		Formation Depth 4224.00 ft			
Oil 39 deg.API					
Water 1.05 Sp.Gr.H2O					
Gas 1.00 Sp.Gr.AIR					
Acoustic Velocity 966.358 ft/s					
Formation Submergence					
Total Gaseous Liquid Column HT (TVD) 2474 ft					
Equivalent Gas Free Liquid HT (TVD) 2474 ft					
Acoustic Test					



Change in Pressure 0.03 psi
 Change in Time 2.75 min
 PT15504 Range



Acoustic Velocity 966.358 ft/s Joints counted 45
 Joints Per Second 15.4321 Jts/sec 68.9969
 Depth to liquid level 2160.29 ft Filter Width 13.674
 Automatic Collar Count Yes Time to 1st Collar 0.3

September 22, 2020

Kent Strube
Hartman Oil Co., Inc.
10500 E BERKELEY SQ PKWY STE 100
WICHITA, KS 67206

Re: Temporary Abandonment
API 15-055-21283-00-00
GARDEN CITY A 3-34
SE/4 Sec.34-23S-34W
Finney County, Kansas

Dear Kent Strube:

"Your temporary abandonment (TA) application for the well listed above has been approved. In accordance with K.A.R. 82-3-111 the TA status of this well will expire 09/22/2021.

- * If you return this well to service or plug it, please notify the District Office.
- * If you sell this well you are required to file a Transfer of Operator form, T-1.
- * If the well will remain temporarily abandoned, you must submit a new TA application, CP-111, before 09/22/2021.

You may contact me at the number above if you have questions.

Very truly yours,

Michael Maier"