

KANSAS CORPORATION COMMISSION
OIL & GAS CONSERVATION DIVISION

TEMPORARY ABANDONMENT WELL APPLICATION

OPERATOR: License#
Name:
Address 1:
Address 2:
City: State: Zip:
Contact Person:
Phone:
Contact Person Email:
Field Contact Person:
Field Contact Person Phone:

API No. 15-
Spot Description:
Sec. Twp. S. R.
GPS Location: Lat: Long:
Datum: NAD27 NAD83 WGS84
County: Elevation:
Lease Name: Well #:
Well Type: Oil Gas OG WSW Other:
SWD Permit #: ENHR Permit #:
Gas Storage Permit #:
Spud Date: Date Shut-In:

Table with 7 columns: Conductor, Surface, Production, Intermediate, Liner, Tubing. Rows include Size, Setting Depth, Amount of Cement, Top of Cement, Bottom of Cement.

Casing Fluid Level from Surface: How Determined? Date:
Casing Squeeze(s): to w / sacks of cement, to w / sacks of cement. Date:
Do you have a valid Oil & Gas Lease? Yes No
Depth and Type: Junk in Hole at Tools in Hole at Casing Leaks: Yes No Depth of casing leak(s):
Type Completion: ALT. I ALT. II Depth of: DV Tool: w / sacks of cement Port Collar: w / sack of cement
Packer Type: Size: Inch Set at: Feet
Total Depth: Plug Back Depth: Plug Back Method:

Geological Date:

Table with 4 columns: Formation Name, Formation Top, Formation Base, Completion Information. Rows 1 and 2.

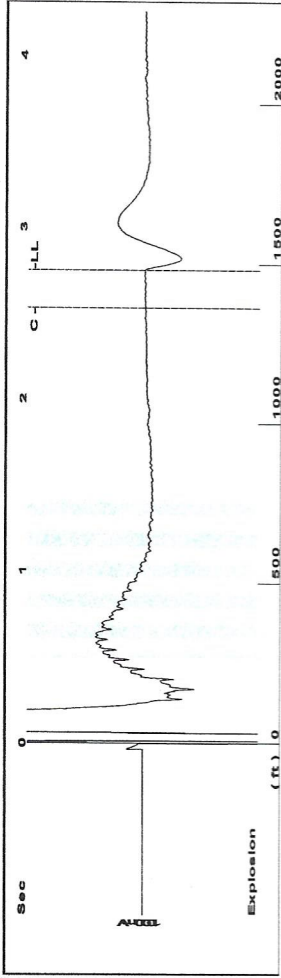
UNDER PENALTY OF PERJURY I HEREBY ATTEST THAT THE INFORMATION CONTAINED HEREIN IS TRUE AND CORRECT TO THE BEST OF MY KNOWLEDGE

Submitted Electronically

Do NOT Write in This Space - KCC USE ONLY
Date Tested: Results: Date Plugged: Date Repaired: Date Put Back in Service:
Review Completed by: Comments:
TA Approved: Yes Denied Date:

Mail to the Appropriate KCC Conservation Office:

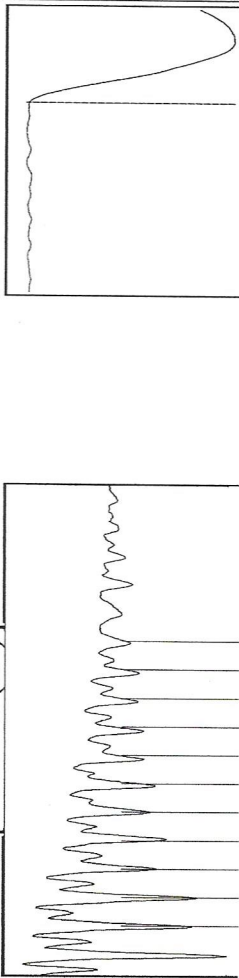
Table with 3 columns: District Office, Address, Phone. Rows for District Office #1, #2, #3, #4.



Filter Type High Pass Automatic Collar Count Yes
 Manual Acoustic Veloc 1082.76 ft/s Manual JTS/sec 17.2414

Time 2.752 sec
 Joints 47.1564 Jts
 Depth 1480.71 ft

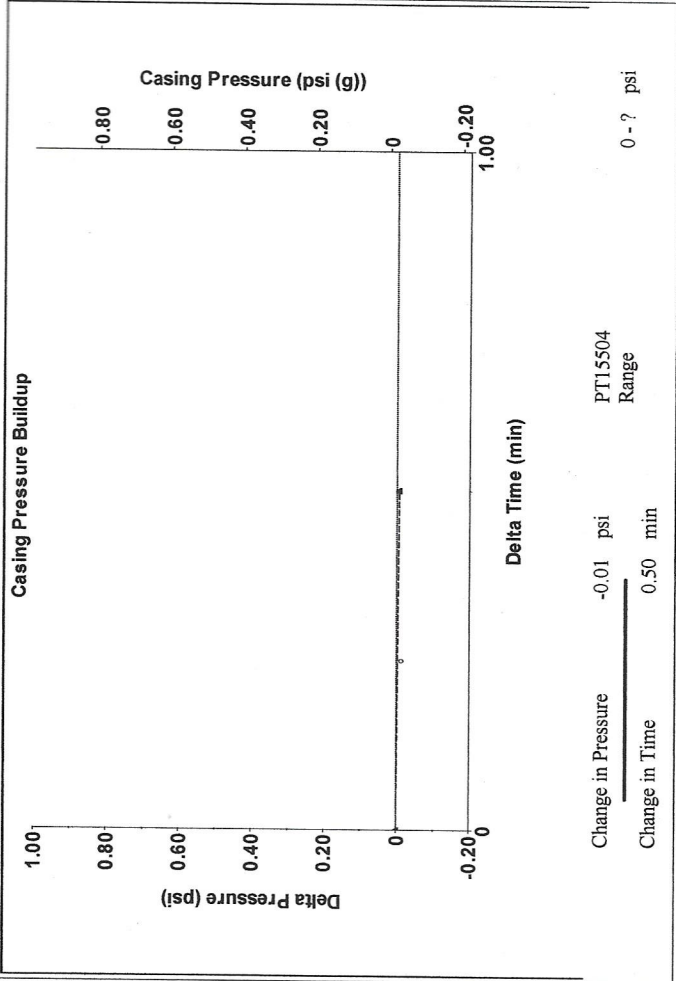
[0.5 to 1.5 (Sec)]



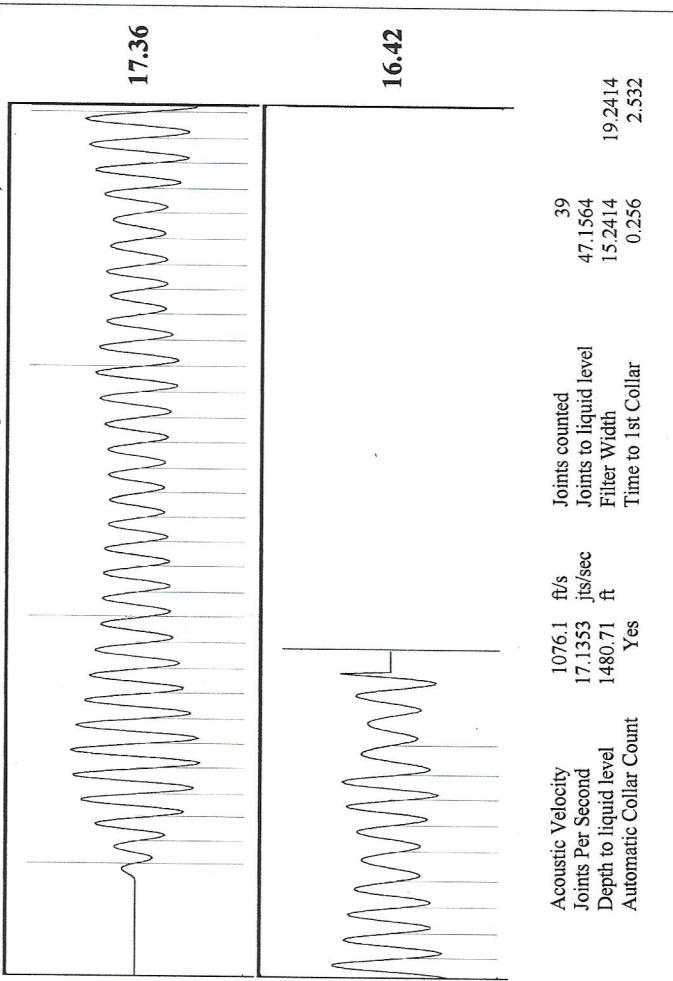
Analysis Method: Automatic

Production Current	Oil 0	Potential	Casing Pressure	-0.0 psi (g)
Water 0	Vogel	Casing Pressure Buildup	-0.006 psi	0.50 min
Gas 0.0	PBHP/SBHP	Gas/Liquid Interface Pressure	0.7 psi (g)	Liquid Level Depth
IPR Method	Production Efficiency			1480.71 ft
Oil 39 deg-API				Pump Intake Depth
Water 1.05 Sp.Gr.H2O				4680.00 ft
Gas 0.90 Sp.Gr.AIR				Formation Depth
Acoustic Velocity	1076.1 ft/s			4242.00 ft
Formation Submergence				3199 ft
Total Gaseous Liquid Column HT (TVD)				3199 ft
Equivalent Gas Free Liquid HT (TVD)				
Acoustic Test				

Producing	Annular Gas Flow	0 Mscf/D
	% Liquid	100 %
	Pump Intake	1455.2 psi (g)
	Producing BHP	1256.1 psi (g)
	Static BHP	- * - psi (g)



Change in Pressure -0.01 psi
 Change in Time 0.50 min
 PT15504 Range



Acoustic Velocity 1076.1 ft/s
 Joints Per Second 17.1353 jts/sec
 Depth to liquid level 1480.71 ft
 Automatic Collar Count Yes
 Joints counted 39
 Joints to liquid level 47.1564
 Filter Width 15.2414
 Time to 1st Collar 0.256

September 22, 2020

Kent Strube
Hartman Oil Co., Inc.
10500 E BERKELEY SQ PKWY STE 100
WICHITA, KS 67206

Re: Temporary Abandonment
API 15-055-21241-00-00
GARDEN CITY A 1-34
NW/4 Sec.34-23S-34W
Finney County, Kansas

Dear Kent Strube:

"Your temporary abandonment (TA) application for the well listed above has been approved. In accordance with K.A.R. 82-3-111 the TA status of this well will expire 09/22/2021.

- * If you return this well to service or plug it, please notify the District Office.
- * If you sell this well you are required to file a Transfer of Operator form, T-1.
- * If the well will remain temporarily abandoned, you must submit a new TA application, CP-111, before 09/22/2021.

You may contact me at the number above if you have questions.

Very truly yours,

Michael Maier"