

KANSAS CORPORATION COMMISSION
OIL & GAS CONSERVATION DIVISION

Form must be Typed
Form must be signed

TEMPORARY ABANDONMENT WELL APPLICATION

All blanks must be complete

OPERATOR: License#
Name:
Address 1:
Address 2:
City: State: Zip:
Contact Person:
Phone:
Contact Person Email:
Field Contact Person:
Field Contact Person Phone:

API No. 15-
Spot Description:
Sec. Twp. S. R.
GPS Location: Lat: Long:
Datum: NAD27 NAD83 WGS84
County: Elevation:
Lease Name: Well #:
Well Type: Oil Gas OG WSW Other:
SWD Permit #: ENHR Permit #:
Gas Storage Permit #:
Spud Date: Date Shut-In:

Table with 7 columns: Conductor, Surface, Production, Intermediate, Liner, Tubing. Rows include Size, Setting Depth, Amount of Cement, Top of Cement, Bottom of Cement.

Casing Fluid Level from Surface: How Determined? Date:
Casing Squeeze(s): to w / sacks of cement, to w / sacks of cement. Date:
Do you have a valid Oil & Gas Lease? Yes No
Depth and Type: Junk in Hole at Tools in Hole at Casing Leaks: Yes No Depth of casing leak(s):
Type Completion: ALT. I ALT. II Depth of: DV Tool: w / sacks of cement Port Collar: w / sack of cement
Packer Type: Size: Inch Set at: Feet
Total Depth: Plug Back Depth: Plug Back Method:

Geological Data:

Table with 4 columns: Formation Name, Formation Top, Formation Base, Completion Information. Rows 1 and 2.

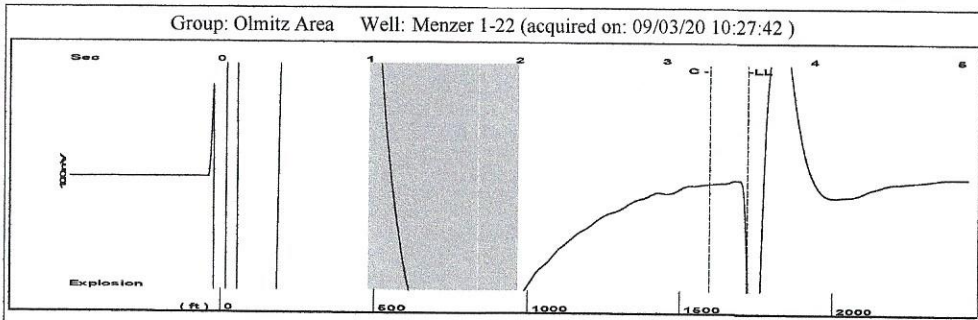
UNDER PENALTY OF PERJURY I HEREBY ATTEST THAT THE INFORMATION CONTAINED HEREIN IS TRUE AND CORRECT TO THE BEST OF MY KNOWLEDGE

Submitted Electronically

Do NOT Write in This Space - KCC USE ONLY
Date Tested: Results: Date Plugged: Date Repaired: Date Put Back in Service:
Review Completed by: Comments:
TA Approved: Yes Denied Date:

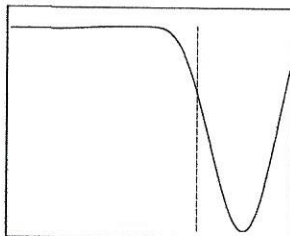
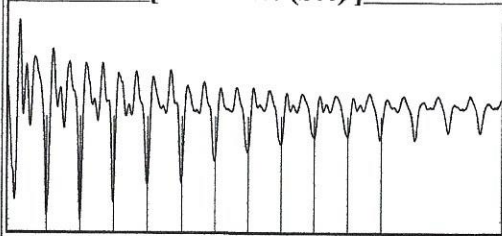
Mail to the Appropriate KCC Conservation Office:

Table with 3 columns: District Office, Address, Phone. Rows for District Office #1, #2, #3, #4.

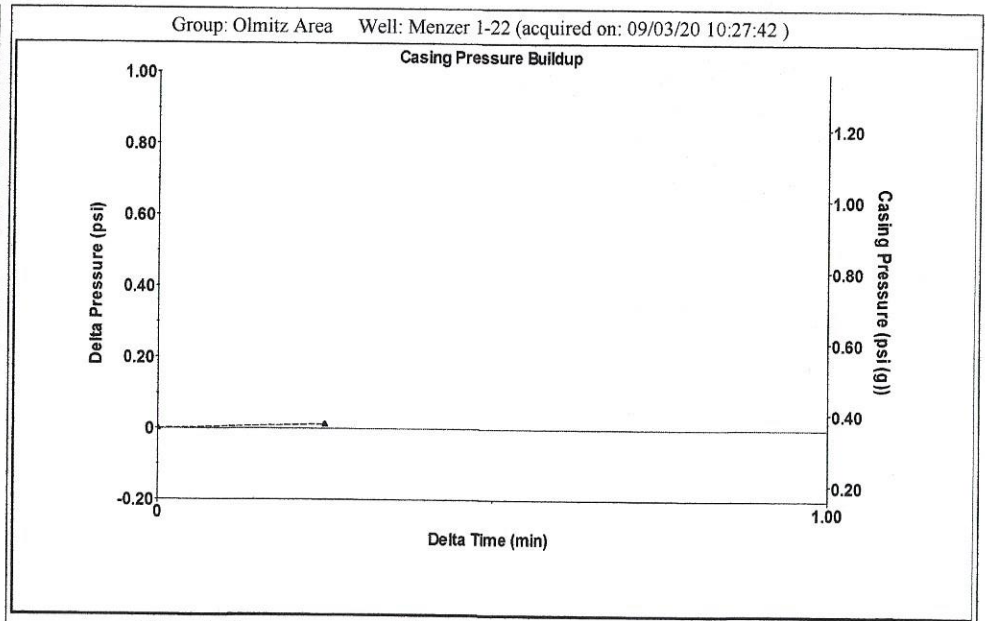


Filter Type High Pass Automatic Collar Count Yes Time 3,549 sec  
 Manual Acoustic Velo 964.897 ft/s Manual JTS/sec 14.7493 Joints 52.5592 Jts  
 Depth 1719.21 ft

[ 1.0 to 2.0 (Sec) ]

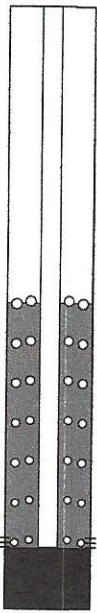


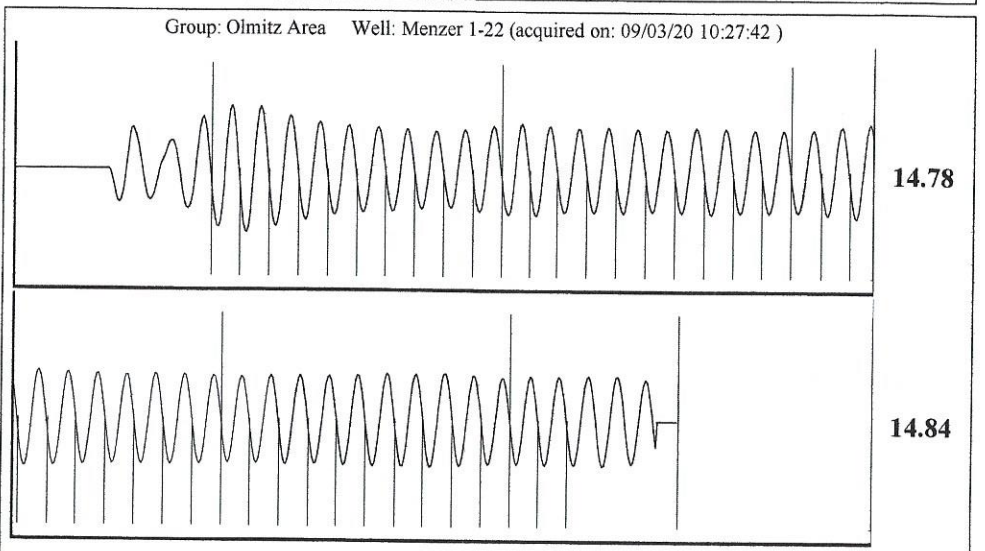
Analysis Method: Automatic



Change in Pressure 0.01 psi PT13440  
 Change in Time 0.25 min Range 0 - ? psi

Group: Olmitz Area Well: Menzer 1-22 (acquired on: 09/03/20 10:27:42)

<b>Production</b>	<b>Potential</b>	<b>Casing Pressure</b>		<b>Producing</b>	
Oil - *-	- *- BBL/D	0.4 psi (g)		Annular Gas Flow	0 Mscf/D
Water - *-	- *- BBL/D	Casing Pressure Buildup		% Liquid	98 %
Gas - *-	- *- Mscf/D	0.0 psi			
		0.25 min			
IPR Method	Vogel	Gas/Liquid Interface Pressure			
PBHP/SBHP	- *-	1.3 psi (g)			
Production Efficiency	0.0				
Oil 40 deg.API		Liquid Level Depth			
Water 1.05 Sp.Gr.H2O		1719.21 ft			
Gas 1.00 Sp.Gr.AIR		Pump Intake Depth			
		3500.00 ft			
Acoustic Velocity	968.843 ft/s	Formation Depth			
		3465.00 ft			
Formation Submergence			<b>Pump Intake</b>	587.7 psi (g)	
Total Gaseous Liquid Column HT (TVD)	1781 ft		<b>Producing BHP</b>	576.4 psi (g)	
Equivalent Gas Free Liquid HT (TVD)	1748 ft		<b>Static BHP</b>	- *- psi (g)	
Acoustic Test					



Acoustic Velocity 968.843 ft/s Joints counted 42  
 Joints Per Second 14.8096 jts/sec Joints to liquid level 52.5592  
 Depth to liquid level 1719.21 ft Filter Width 12.7493 16.7493  
 Automatic Collar Count Yes Time to 1st Collar 0.456 3.292

September 17, 2020

Loveness Mpanje  
F. G. Holl Company L.L.C.  
9431 E CENTRAL STE 100  
WICHITA, KS 67206-2563

Re: Temporary Abandonment  
API 15-009-25800-00-01  
MENZER "OWWO" 1-22  
SE/4 Sec.22-17S-15W  
Barton County, Kansas

Dear Loveness Mpanje:

"Your temporary abandonment (TA) application for the well listed above has been approved. In accordance with K.A.R. 82-3-111 the TA status of this well will expire 09/17/2021.

- \* If you return this well to service or plug it, please notify the District Office.
- \* If you sell this well you are required to file a Transfer of Operator form, T-1.
- \* If the well will remain temporarily abandoned, you must submit a new TA application, CP-111, before 09/17/2021.

You may contact me at the number above if you have questions.

Very truly yours,

RICHARD WILLIAMS"