

KANSAS CORPORATION COMMISSION
OIL & GAS CONSERVATION DIVISION

TEMPORARY ABANDONMENT WELL APPLICATION

OPERATOR: License#
Name:
Address 1:
Address 2:
City: State: Zip:
Contact Person:
Phone:
Contact Person Email:
Field Contact Person:
Field Contact Person Phone:

API No. 15-
Spot Description:
Sec. Twp. S. R.
GPS Location: Lat: Long:
Datum: NAD27 NAD83 WGS84
County: Elevation:
Lease Name: Well #:
Well Type: Oil Gas OG WSW Other:
SWD Permit #: ENHR Permit #:
Gas Storage Permit #:
Spud Date: Date Shut-In:

Table with 7 columns: Conductor, Surface, Production, Intermediate, Liner, Tubing. Rows include Size, Setting Depth, Amount of Cement, Top of Cement, Bottom of Cement.

Casing Fluid Level from Surface: How Determined? Date:
Casing Squeeze(s): to w / sacks of cement, to w / sacks of cement. Date:
Do you have a valid Oil & Gas Lease? Yes No
Depth and Type: Junk in Hole at Tools in Hole at Casing Leaks: Yes No Depth of casing leak(s):
Type Completion: ALT. I ALT. II Depth of: DV Tool: w / sacks of cement Port Collar: w / sack of cement
Packer Type: Size: Inch Set at: Feet
Total Depth: Plug Back Depth: Plug Back Method:

Geological Data:

Table with 4 columns: Formation Name, Formation Top, Formation Base, Completion Information. Rows 1 and 2.

UNDER PENALTY OF PERJURY I HEREBY ATTEST THAT THE INFORMATION CONTAINED HEREIN IS TRUE AND CORRECT TO THE BEST OF MY KNOWLEDGE

Submitted Electronically

Do NOT Write in This Space - KCC USE ONLY
Date Tested: Results: Date Plugged: Date Repaired: Date Put Back in Service:
Review Completed by: Comments:
TA Approved: Yes Denied Date:

Mail to the Appropriate KCC Conservation Office:

Map of Kansas with 4 numbered districts. Table with 3 columns: District Office Name, Address, Phone Number.

ECHOMETER COMPANY PHONE-940-767-4334

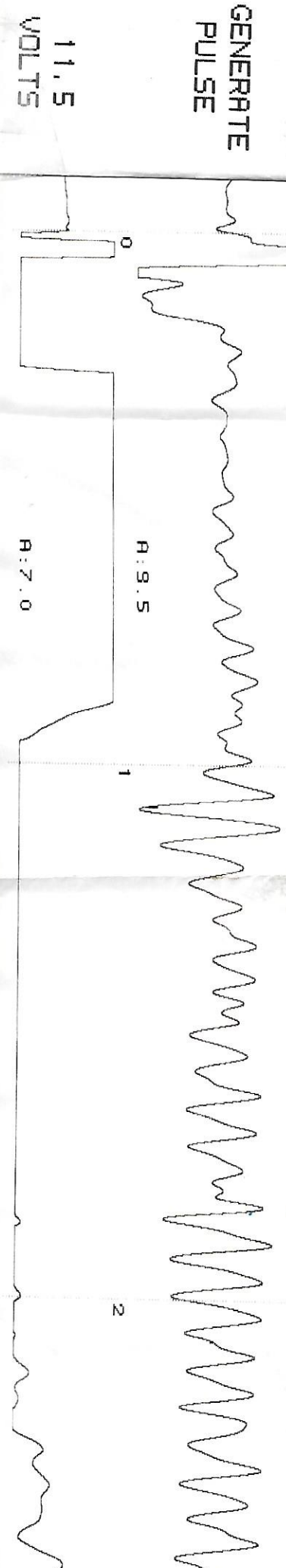
WELL *Lawman # 8*  
CRASING PRESSURE  
AP  
AT  
PRODUCTION RATE  
21:25:05 UTC 09/14/2020

JOINTS TO LIQUID  
DISTANCE TO LIQUID *1700'*  
PBHP  
SBHP  
PRD RATE EFF, %  
MAX PRODUCTION

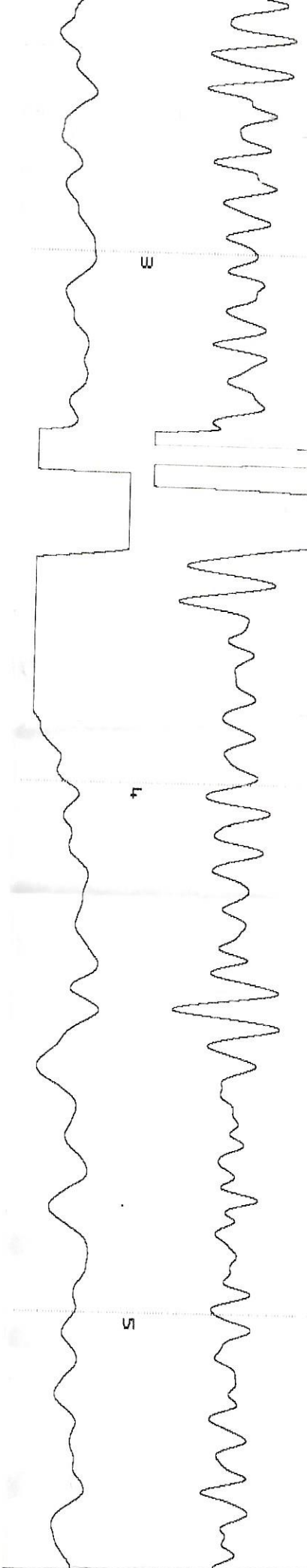
COLLAR P-P mV 0.103  
A: 9.5  
LOWER  
LIQUID P-P mV 0.392  
A: 7.0

ECHOMETER COMPANY PHONE-940-767-4334

GENERATE PULSE



ECHOMETER COMPANY PHONE-940-767-4334



September 17, 2020

KATHY SVITAK  
Randon Production Company Inc.  
2863 SUNFLOWER  
MARION, KS 66861-9479

Re: Temporary Abandonment  
API 15-115-20227-00-00  
COWMAN 8  
SW/4 Sec.11-17S-04E  
Marion County, Kansas

Dear KATHY SVITAK:

"Your temporary abandonment (TA) application for the well listed above has been approved. In accordance with K.A.R. 82-3-111 the TA status of this well will expire 09/17/2021.

- \* If you return this well to service or plug it, please notify the District Office.
- \* If you sell this well you are required to file a Transfer of Operator form, T-1.
- \* If the well will remain temporarily abandoned, you must submit a new TA application, CP-111, before 09/17/2021.

You may contact me at the number above if you have questions.

Very truly yours,

Jeff Klock, District Supervisor"