

KANSAS CORPORATION COMMISSION  
OIL & GAS CONSERVATION DIVISION

TEMPORARY ABANDONMENT WELL APPLICATION

OPERATOR: License# \_\_\_\_\_  
 Name: \_\_\_\_\_  
 Address 1: \_\_\_\_\_  
 Address 2: \_\_\_\_\_  
 City: \_\_\_\_\_ State: \_\_\_\_\_ Zip: \_\_\_\_\_ + \_\_\_\_\_  
 Contact Person: \_\_\_\_\_  
 Phone: ( \_\_\_\_\_ ) \_\_\_\_\_  
 Contact Person Email: \_\_\_\_\_  
 Field Contact Person: \_\_\_\_\_  
 Field Contact Person Phone: ( \_\_\_\_\_ ) \_\_\_\_\_

API No. 15- \_\_\_\_\_  
 Spot Description: \_\_\_\_\_  
 \_\_\_\_\_ - \_\_\_\_\_ - \_\_\_\_\_ - \_\_\_\_\_ Sec. \_\_\_\_\_ Twp. \_\_\_\_\_ S. R. \_\_\_\_\_  E  W  
 \_\_\_\_\_ feet from  N /  S Line of Section  
 \_\_\_\_\_ feet from  E /  W Line of Section  
 GPS Location: Lat: \_\_\_\_\_, Long: \_\_\_\_\_  
(e.g. xx.xxxxx) (e.g. -xxx.xxxxx)  
 Datum:  NAD27  NAD83  WGS84  
 County: \_\_\_\_\_ Elevation: \_\_\_\_\_  GL  KB  
 Lease Name: \_\_\_\_\_ Well #: \_\_\_\_\_  
 Well Type: (check one)  Oil  Gas  OG  WSW  Other: \_\_\_\_\_  
 SWD Permit #: \_\_\_\_\_  ENHR Permit #: \_\_\_\_\_  
 Gas Storage Permit #: \_\_\_\_\_  
 Spud Date: \_\_\_\_\_ Date Shut-In: \_\_\_\_\_

	Conductor	Surface	Production	Intermediate	Liner	Tubing
Size						
Setting Depth						
Amount of Cement						
Top of Cement						
Bottom of Cement						

Casing Fluid Level from Surface: \_\_\_\_\_ How Determined? \_\_\_\_\_ Date: \_\_\_\_\_  
 Casing Squeeze(s): \_\_\_\_\_ to \_\_\_\_\_ w / \_\_\_\_\_ sacks of cement, \_\_\_\_\_ to \_\_\_\_\_ w / \_\_\_\_\_ sacks of cement. Date: \_\_\_\_\_  
(top) (bottom) (top) (bottom)  
 Do you have a valid Oil & Gas Lease?  Yes  No  
 Depth and Type:  Junk in Hole at \_\_\_\_\_  Tools in Hole at \_\_\_\_\_ Casing Leaks:  Yes  No Depth of casing leak(s): \_\_\_\_\_  
(depth) (depth)  
 Type Completion:  ALT. I  ALT. II Depth of:  DV Tool: \_\_\_\_\_ w / \_\_\_\_\_ sacks of cement  Port Collar: \_\_\_\_\_ w / \_\_\_\_\_ sack of cement  
(depth) (depth)  
 Packer Type: \_\_\_\_\_ Size: \_\_\_\_\_ Inch Set at: \_\_\_\_\_ Feet  
 Total Depth: \_\_\_\_\_ Plug Back Depth: \_\_\_\_\_ Plug Back Method: \_\_\_\_\_

**Geological Data:**

Formation Name	Formation Top	Formation Base	Completion Information
1. _____	At: _____	to _____ Feet	Perforation Interval _____ to _____ Feet or Open Hole Interval _____ to _____ Feet
2. _____	At: _____	to _____ Feet	Perforation Interval _____ to _____ Feet or Open Hole Interval _____ to _____ Feet

UNDER PENALTY OF PERJURY I HEREBY ATTEST THAT THE INFORMATION CONTAINED HEREIN IS TRUE AND CORRECT TO THE BEST OF MY KNOWLEDGE

Submitted Electronically

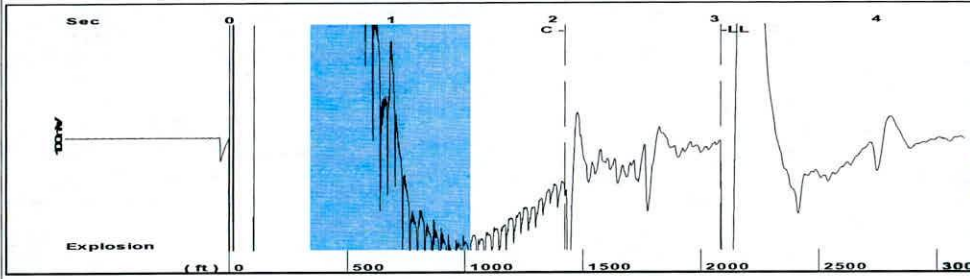
<b>Do NOT Write in This Space - KCC USE ONLY</b>	Date Tested: _____	Results: _____	Date Plugged: _____	Date Repaired: _____	Date Put Back in Service: _____
	Review Completed by: _____ Comments: _____				
TA Approved: <input type="checkbox"/> Yes <input type="checkbox"/> Denied Date: _____					

Mail to the Appropriate KCC Conservation Office:

	KCC District Office #1 - 210 E. Frontview, Suite A, Dodge City, KS 67801	Phone 620.682.7933
	KCC District Office #2 - 3450 N. Rock Road, Building 600, Suite 601, Wichita, KS 67226	Phone 316.337.7400
	KCC District Office #3 - 137 E. 21st St., Chanute, KS 66720	Phone 620.902.6450
	KCC District Office #4 - 2301 E. 13th Street, Hays, KS 67601-2651	Phone 785.261.6250

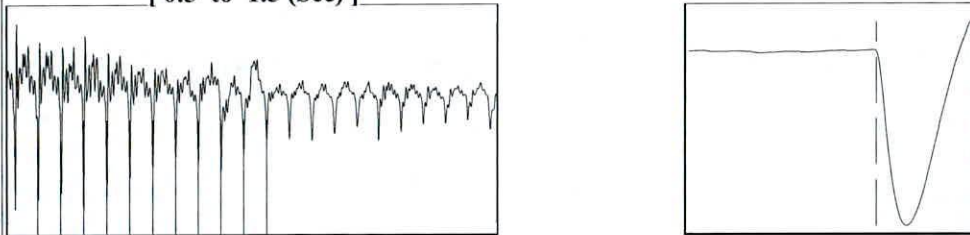


Group: Indian Oil Well: Swartz 1-A (acquired on: 09/01/20 09:44:52 )



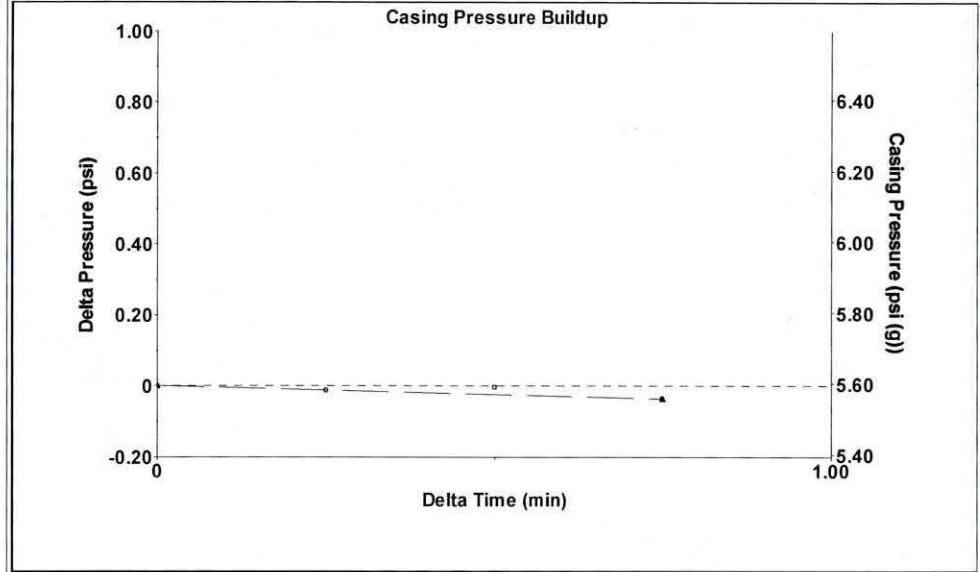
Filter Type High Pass Automatic Collar Count Yes Time 3.04 sec  
 Manual Acoustic Velo 1363.44 ft/s Manual JTS/sec 21.5054 Joints 65.7206 Jts  
 Depth 2083.34 ft

[ 0.5 to 1.5 (Sec) ]



Analysis Method: Automatic

Group: Indian Oil Well: Swartz 1-A (acquired on: 09/01/20 09:44:52 )



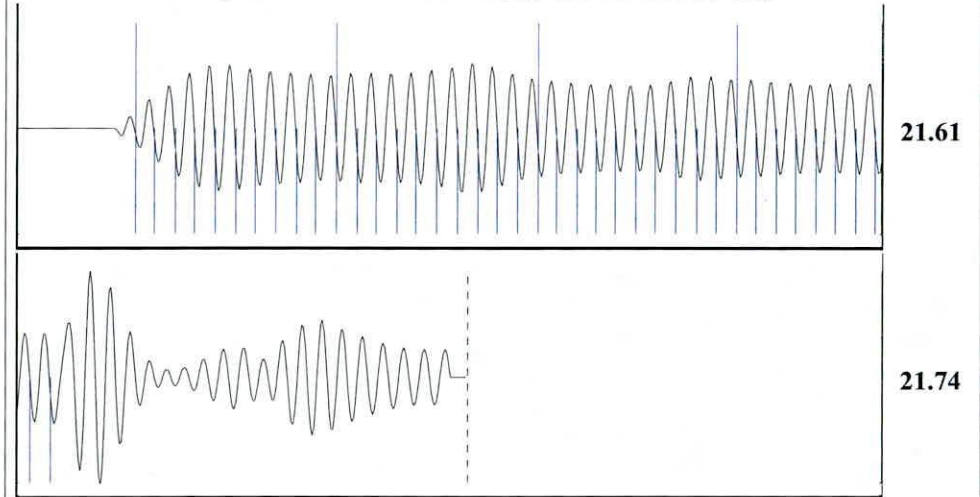
Change in Pressure -0.04 psi PT 15565  
 Change in Time 0.75 min Range 0 - ? psi

Group: Indian Oil Well: Swartz 1-A (acquired on: 09/01/20 09:44:52 )

Production		Casing Pressure	Producing
Current	Potential	5.6 psi (g)	
Oil 0	- * - BBL/D	Casing Pressure Buildup	Annular Gas Flow 0 Mscf/D
Water 30	- * - BBL/D	-0.037 psi	% Liquid 100 %
Gas 5.0	- * - Mscf/D	0.75 min	
		Gas/Liquid Interface Pressure	
IPR Method	Vogel	6.5 psi (g)	
PBHP/SBHP	- * -		
Production Efficiency	0.0	Liquid Level Depth	
		2083.34 ft	
Oil 40 deg.API		Pump Intake Depth	
Water 1.05 Sp.Gr.H2O		3507.00 ft	
Gas 0.64 Sp.Gr.AIR		Formation Depth	
		3506.00 ft	
Acoustic Velocity	1370.62 ft/s		
		Pump Intake	
		653.8 psi (g)	
Formation Submergence		Producing BHP	
Total Gaseous Liquid Column HT (TVD)	1424 ft	653.3 psi (g)	
Equivalent Gas Free Liquid HT (TVD)	1424 ft	Static BHP	
		- * - psi (g)	



Group: Indian Oil Well: Swartz 1-A (acquired on: 09/01/20 09:44:52 )



Acoustic Velocity 1370.62 ft/s Joints counted 39  
 Joints Per Second 21.6186 jts/sec Joints to liquid level 65.7206  
 Depth to liquid level 2083.34 ft Filter Width 19.5054 23.5054  
 Automatic Collar Count Yes Time to 1st Collar 0.272 2.076

September 15, 2020

Anthony Farrar  
Indian Oil Co., Inc.  
2507 SE US HWY 160  
PO BOX 209  
MEDICINE LODGE, KS 67104-0209

Re: Temporary Abandonment  
API 15-007-21148-00-01  
SWARTZ 1  
NE/4 Sec.31-31S-11W  
Barber County, Kansas

Dear Anthony Farrar:

"Your temporary abandonment (TA) application for the well listed above has been approved. In accordance with K.A.R. 82-3-111 the TA status of this well will expire 09/15/2021.

- \* If you return this well to service or plug it, please notify the District Office.
- \* If you sell this well you are required to file a Transfer of Operator form, T-1.
- \* If the well will remain temporarily abandoned, you must submit a new TA application, CP-111, before 09/15/2021.

You may contact me at the number above if you have questions.

Very truly yours,

Michael Maier"