

KANSAS CORPORATION COMMISSION
OIL & GAS CONSERVATION DIVISION

TEMPORARY ABANDONMENT WELL APPLICATION

OPERATOR: License#
Name:
Address 1:
Address 2:
City: State: Zip:
Contact Person:
Phone:
Contact Person Email:
Field Contact Person:
Field Contact Person Phone:

API No. 15-
Spot Description:
Sec. Twp. S. R.
GPS Location: Lat: Long:
Datum: NAD27 NAD83 WGS84
County: Elevation:
Lease Name: Well #:
Well Type: Oil Gas OG WSW Other:
SWD Permit #: ENHR Permit #:
Gas Storage Permit #:
Spud Date: Date Shut-In:

Table with 7 columns: Conductor, Surface, Production, Intermediate, Liner, Tubing. Rows include Size, Setting Depth, Amount of Cement, Top of Cement, Bottom of Cement.

Casing Fluid Level from Surface: How Determined? Date:
Casing Squeeze(s): to w / sacks of cement, to w / sacks of cement. Date:
Do you have a valid Oil & Gas Lease? Yes No
Depth and Type: Junk in Hole at Tools in Hole at Casing Leaks: Yes No Depth of casing leak(s):
Type Completion: ALT. I ALT. II Depth of: DV Tool: w / sacks of cement Port Collar: w / sack of cement
Packer Type: Size: Inch Set at: Feet
Total Depth: Plug Back Depth: Plug Back Method:

Geological Data:

Table with 4 columns: Formation Name, Formation Top, Formation Base, Completion Information. Rows 1 and 2.

UNDER PENALTY OF PERJURY I HEREBY ATTEST THAT THE INFORMATION CONTAINED HEREIN IS TRUE AND CORRECT TO THE BEST OF MY KNOWLEDGE

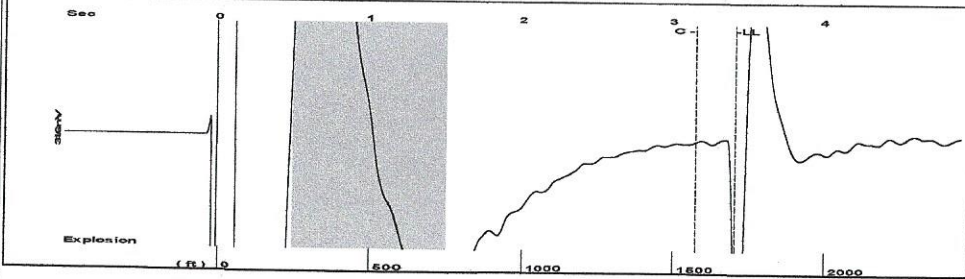
Submitted Electronically

Do NOT Write in This Space - KCC USE ONLY
Date Tested: Results: Date Plugged: Date Repaired: Date Put Back in Service:
Review Completed by: Comments:
TA Approved: Yes Denied Date:

Mail to the Appropriate KCC Conservation Office:

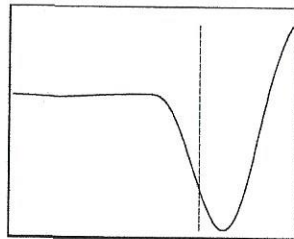
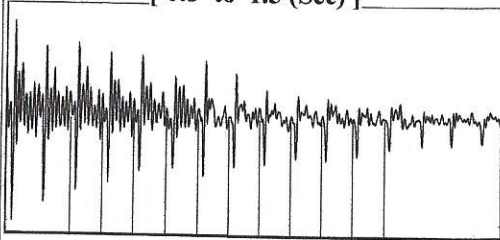
Table with 3 columns: District Office, Address, Phone. Rows for District Office #1, #2, #3, #4.

Group: Belpre Well: Embry 1-23 (acquired on: 09/01/20 10:17:48)



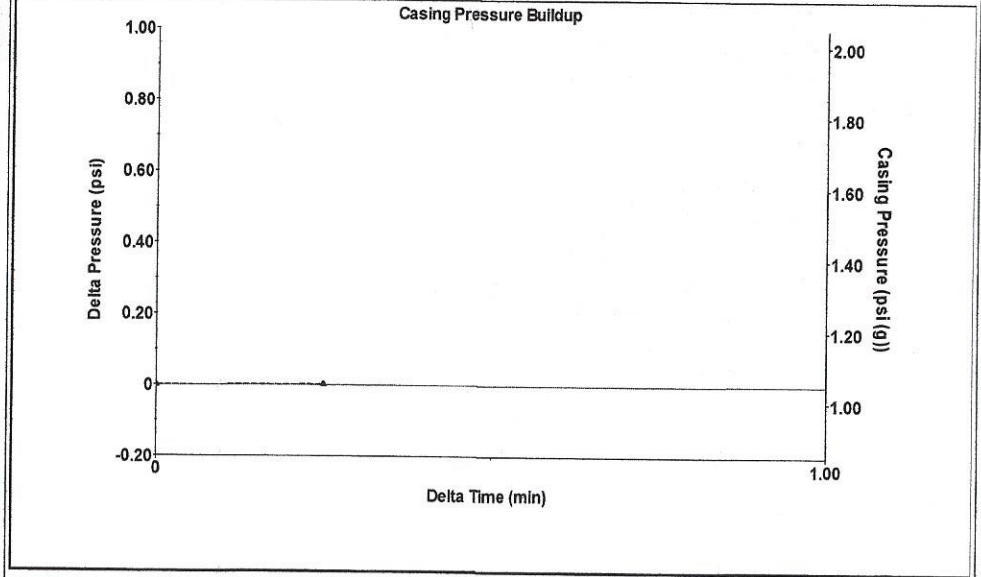
Filter Type High Pass Automatic Collar Count Yes Time 3.411 sec
 Manual Acoustic Velo984.301 ft/s Manual JTS/sec 15.6986 Joints 54.3303 Jts
 Depth 1703.26 ft

[0.5 to 1.5 (Sec)]



Analysis Method: Automatic

Group: Belpre Well: Embry 1-23 (acquired on: 09/01/20 10:17:48)

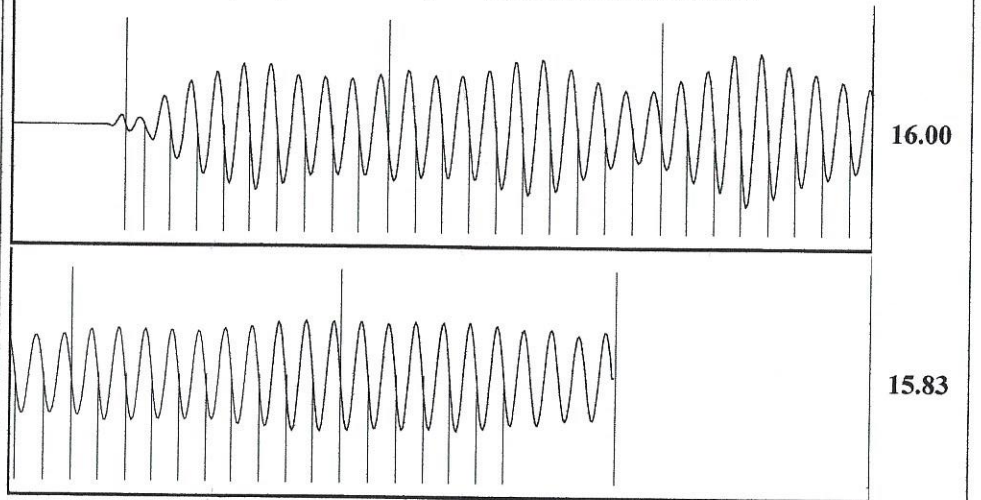


Change in Pressure 0.00 psi PT13440
 Range 0 - ? psi
 Change in Time 0.25 min

Group: Belpre Well: Embry 1-23 (acquired on: 09/01/20 10:17:48)

Production	Potential	Casing Pressure		Producing
Current	- * - BBL/D	1.0 psi (g)		Annular Gas Flow
Oil - * -	- * - BBL/D	Casing Pressure Buildup		0 Mscf/D
Water - * -	- * - Mscf/D	0.002 psi		% Liquid
Gas - * -		0.25 min		100 %
IPR Method	Vogel	Gas/Liquid Interface Pressure		
PBHP/SBHP	- * -	2.0 psi (g)		
Production Efficiency	0.0			
Oil 40 deg.API		Liquid Level Depth		
Water 1.05 Sp.Gr.H2O		1703.26 ft		
Gas 0.97 Sp.Gr.AIR		Pump Intake Depth		
		4201.00 ft		
Acoustic Velocity	998.684 ft/s	Formation Depth		
		4209.00 ft		
Formation Submergence		Pump Intake		
Total Gaseous Liquid Column HT (TVD)	2498 ft	828.4 psi (g)		
Equivalent Gas Free Liquid HT (TVD)	2498 ft	Producing BHP		
		832.0 psi (g)		
Acoustic Test		Static BHP		
		- * - psi (g)		

Group: Belpre Well: Embry 1-23 (acquired on: 09/01/20 10:17:48)



Acoustic Velocity 998.684 ft/s Joints counted 46
 Joints Per Second 15.928 jts/sec Joints to liquid level 54.3303
 Depth to liquid level 1703.26 ft Filter Width 13.6986
 Automatic Collar Count Yes Time to 1st Collar 0.26 3.148

September 15, 2020

Loveness Mpanje
F. G. Holl Company L.L.C.
9431 E CENTRAL STE 100
WICHITA, KS 67206-2563

Re: Temporary Abandonment
API 15-047-00001-00-02
EMBRY 1-23
SW/4 Sec.23-24S-16W
Edwards County, Kansas

Dear Loveness Mpanje:

"Your temporary abandonment (TA) application for the well listed above has been approved. In accordance with K.A.R. 82-3-111 the TA status of this well will expire 09/15/2021.

- * If you return this well to service or plug it, please notify the District Office.
- * If you sell this well you are required to file a Transfer of Operator form, T-1.
- * If the well will remain temporarily abandoned, you must submit a new TA application, CP-111, before 09/15/2021.

You may contact me at the number above if you have questions.

Very truly yours,

Michael Maier"