



DRILL STEM TEST REPORT

Prepared For: **Edison Operating Company LLC**

8100 E 22nd str n Bldg 1900
Wichita, Kansas 67226

ATTN: Derek Patterson

Wild Turkey #1-7

7-24s-12w Stafford

Start Date: 2018.08.15 @ 13:37:00

End Date: 2018.08.15 @ 19:38:00

Job Ticket #: 01095 DST #: 4

Eagle Testers
1309 Patton Road Great Bend, Kansas 67530
620-791-7394

Printed: 2018.08.15 @ 19:57:26



DRILL STEM TEST REPORT

Edison Operating Company LLC

7-24s-12w Stafford

8100 E 22nd str n Bldg 1900
Wichita, Kansas 67226

Wild Turkey #1-7

ATTN: Derek Patterson

Job Ticket: 01095

DST#: 4

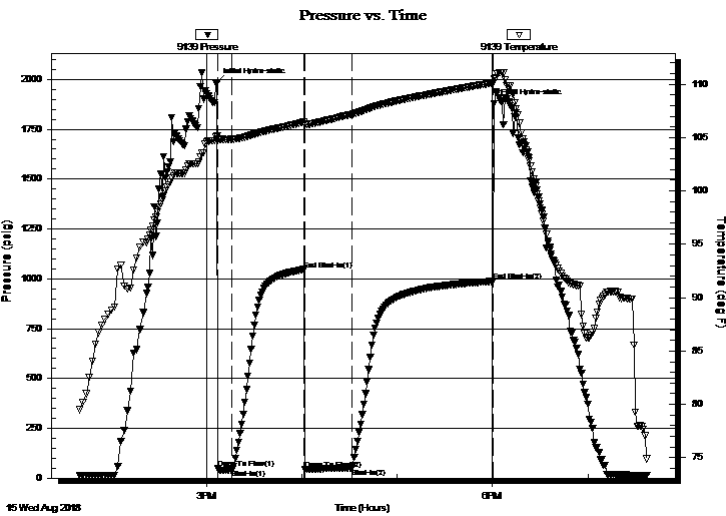
Test Start: 2018.08.15 @ 13:37:00

GENERAL INFORMATION:

Formation: **Viola**
 Deviated: No Whipstock: ft (KB)
 Test Type: Conventional Bottom Hole (Initial)
 Time Tool Opened: 15:06:00 Tester: Gene Budig
 Time Test Ended: 19:38:00 Unit No: 1
 Interval: **3902.00 ft (KB) To 3926.00 ft (KB) (TVD)** Reference Elevations: 1897.00 ft (KB)
 Total Depth: 3926.00 ft (KB) (TVD) 1887.00 ft (CF)
 Hole Diameter: 7.88 inches Hole Condition: Fair KB to GR/CF: 10.00 ft

Serial #: 9139 Outside
 Press@RunDepth: 987.88 psig @ 3921.00 ft (KB) Capacity: 5000.00 psig
 Start Date: 2018.08.15 End Date: 2018.08.15 Last Calib.: 2018.08.15
 Start Time: 13:40:00 End Time: 19:37:30 Time On Btm: 2018.08.15 @ 15:06:30
 Time Off Btm: 2018.08.15 @ 18:01:00

TEST COMMENT: 1st Opening 10 Minutes good blow bottom of the bucket in 5 minutes
 1st Shut-In 45 Minutes no blow back
 2nd Opening 30 Minutes Strong blow BOB Immediatly decrease to Bottom of the bucket in 3 minutes
 2nd Shut-In 90 Minutes weak blow back



PRESSURE SUMMARY

Time (Min.)	Pressure (psig)	Temp (deg F)	Annotation
0	1983.24	105.14	Initial Hydro-static
1	46.97	104.77	Open To Flow (1)
10	41.91	104.85	Shut-In(1)
55	1046.16	106.45	End Shut-In(1)
56	42.87	106.22	Open To Flow (2)
85	51.19	107.18	Shut-In(2)
174	987.88	110.12	End Shut-In(2)
175	1878.37	110.54	Final Hydro-static

Recovery

Length (ft)	Description	Volume (bbl)
0.00	1500 feet of gasn in the pipe	0.00
45.00	heavy oil cut mud	0.63
0.00	15%Gas 40% Oil 45% Mud	0.00

Gas Rates

	Choke (inches)	Pressure (psig)	Gas Rate (Mcf/d)



DRILL STEM TEST REPORT

Edison Operating Company LLC

7-24s-12w Stafford

8100 E 22nd str n Bldg 1900
Wichita, Kansas 67226

Wild Turkey #1-7

ATTN: Derek Patterson

Job Ticket: 01095

DST#: 4

Test Start: 2018.08.15 @ 13:37:00

GENERAL INFORMATION:

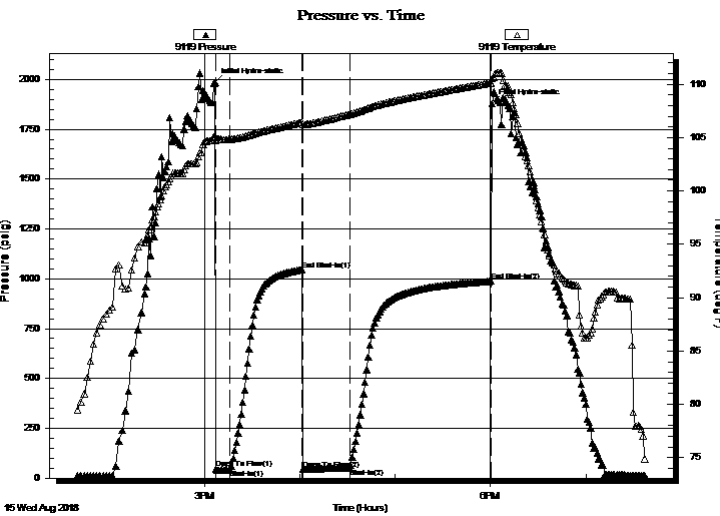
Formation: **Viola**
 Deviated: No Whipstock: ft (KB)
 Test Type: Conventional Bottom Hole (Initial)
 Time Tool Opened: 15:06:00 Tester: Gene Budig
 Time Test Ended: 19:38:00 Unit No: 1
 Interval: **3902.00 ft (KB) To 3926.00 ft (KB) (TVD)** Reference Elevations: 1897.00 ft (KB)
 Total Depth: 3926.00 ft (KB) (TVD) 1887.00 ft (CF)
 Hole Diameter: 7.88 inches Hole Condition: Fair KB to GR/CF: 10.00 ft

Serial #: 9119

Inside

Press@RunDepth: 987.88 psig @ 3921.00 ft (KB) Capacity: 5000.00 psig
 Start Date: 2018.08.15 End Date: 2018.08.15 Last Calib.: 2018.08.15
 Start Time: 13:40:00 End Time: 19:37:30 Time On Btm: 2018.08.15 @ 15:06:30
 Time Off Btm: 2018.08.15 @ 18:01:00

TEST COMMENT: 1st Opening 10 Minutes good blow bottom of the bucket in 5 minutes
 1st Shut-In 45 Minutes no blow back
 2nd Opening 30 Minutes Strong blow BOB Immediatly decrease to Bottom of the bucket in 3 minutes
 2nd Shut-In 90 Minutes weak blow back



PRESSURE SUMMARY

Time (Min.)	Pressure (psig)	Temp (deg F)	Annotation
0	1983.24	105.14	Initial Hydro-static
1	46.97	104.77	Open To Flow (1)
10	41.91	104.85	Shut-In(1)
55	1046.16	106.45	End Shut-In(1)
56	42.87	106.22	Open To Flow (2)
85	51.19	107.18	Shut-In(2)
174	987.88	110.12	End Shut-In(2)
175	1878.37	110.54	Final Hydro-static

Recovery

Length (ft)	Description	Volume (bbl)
0.00	1500 feet of gasn in the pipe	0.00
45.00	heavy oil cut mud	0.63
0.00	15%Gas 40% Oil 45% Mud	0.00

Gas Rates

	Choke (inches)	Pressure (psig)	Gas Rate (Mcf/d)



DRILL STEM TEST REPORT

TOOL DIAGRAM

Edison Operating Company LLC

7-24s-12w Stafford

8100 E 22nd str n Bldg 1900
Wichita, Kansas 67226

Wild Turkey #1-7

Job Ticket: 01095

DST#: 4

ATTN: Derek Patterson

Test Start: 2018.08.15 @ 13:37:00

Tool Information

Drill Pipe:	Length: 3899.00 ft	Diameter: 3.80 inches	Volume: 54.69 bbl	Tool Weight: 2000.00 lb
Heavy Wt. Pipe:	Length: 0.00 ft	Diameter: 0.00 inches	Volume: 0.00 bbl	Weight set on Packer: 20000.00 lb
Drill Collar:	Length: 0.00 ft	Diameter: 0.00 inches	Volume: 0.00 bbl	Weight to Pull Loose: 75000.00 lb
			<u>Total Volume: 54.69 bbl</u>	Tool Chased 0.00 ft
Drill Pipe Above KB:	27.00 ft			String Weight: Initial 40000.00 lb
Depth to Top Packer:	3902.00 ft			Final 42000.00 lb
Depth to Bottom Packer:	ft			
Interval between Packers:	24.00 ft			
Tool Length:	54.00 ft			
Number of Packers:	2	Diameter: inches		
Tool Comments:				

Tool Description	Length (ft)	Serial No.	Position	Depth (ft)	Accum. Lengths
------------------	-------------	------------	----------	------------	----------------

Shut In Tool	5.00			3877.00	
Hydraulic tool	5.00			3882.00	
Jars	5.00			3887.00	
Safety Joint	5.00			3892.00	
Packer	5.00			3897.00	30.00 Bottom Of Top Packer
Packer	5.00		Fluid	3902.00	
Anchor	19.00			3921.00	
Recorder	0.00	9119	Inside	3921.00	
Recorder	0.00	9139	Outside	3921.00	
Bullnose	5.00			3926.00	24.00 Bottom Packers & Anchor
Total Tool Length:	54.00				



DRILL STEM TEST REPORT

FLUID SUMMARY

Edison Operating Company LLC

7-24s-12w Stafford

8100 E 22nd str n Bldg 1900
Wichita, Kansas 67226

Wild Turkey #1-7

Job Ticket: 01095

DST#: 4

ATTN: Derek Patterson

Test Start: 2018.08.15 @ 13:37:00

Mud and Cushion Information

Mud Type: Gel Chem
Mud Weight: 9.00 lb/gal
Viscosity: 54.00 sec/qt
Water Loss: 11.99 in³
Resistivity: ohm.m
Salinity: 9000.00 ppm
Filter Cake: 0.00 inches

Cushion Type:
Cushion Length: ft
Cushion Volume: bbl
Gas Cushion Type:
Gas Cushion Pressure: psig

Oil API: deg API
Water Salinity: ppm

Recovery Information

Recovery Table

Length ft	Description	Volume bbl
0.00	1500 feet of gasn in the pipe	0.000
45.00	heavy oil cut mud	0.631
0.00	15%Gas 40% Oil 45% Mud	0.000

Total Length: 45.00 ft Total Volume: 0.631 bbl

Num Fluid Samples: 0

Num Gas Bombs: 0

Serial #:

Laboratory Name:

Laboratory Location:

Recovery Comments:

Pressure vs. Time

