

KANSAS CORPORATION COMMISSION
OIL & GAS CONSERVATION DIVISION

TEMPORARY ABANDONMENT WELL APPLICATION

OPERATOR: License#
Name:
Address 1:
Address 2:
City: State: Zip:
Contact Person:
Phone:
Contact Person Email:
Field Contact Person:
Field Contact Person Phone:

API No. 15-
Spot Description:
Sec. Twp. S. R.
GPS Location: Lat: Long:
Datum: NAD27 NAD83 WGS84
County: Elevation:
Lease Name: Well #:
Well Type: Oil Gas OG WSW Other:
SWD Permit #: ENHR Permit #:
Gas Storage Permit #:
Spud Date: Date Shut-In:

Table with 7 columns: Conductor, Surface, Production, Intermediate, Liner, Tubing. Rows include Size, Setting Depth, Amount of Cement, Top of Cement, Bottom of Cement.

Casing Fluid Level from Surface: How Determined? Date:
Casing Squeeze(s): to w / sacks of cement, to w / sacks of cement. Date:
Do you have a valid Oil & Gas Lease? Yes No
Depth and Type: Junk in Hole at Tools in Hole at Casing Leaks: Yes No Depth of casing leak(s):
Type Completion: ALT. I ALT. II Depth of: DV Tool: w / sacks of cement Port Collar: w / sack of cement
Packer Type: Size: Inch Set at: Feet
Total Depth: Plug Back Depth: Plug Back Method:

Geological Data:

Table with 4 columns: Formation Name, Formation Top, Formation Base, Completion Information. Rows 1 and 2.

UNDER PENALTY OF PERJURY I HEREBY ATTEST THAT THE INFORMATION CONTAINED HEREIN IS TRUE AND CORRECT TO THE BEST OF MY KNOWLEDGE

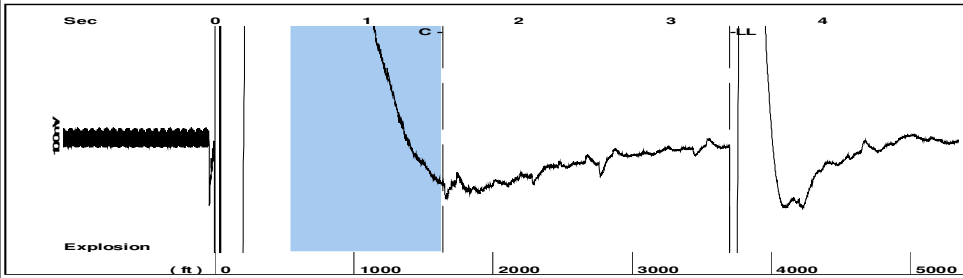
Submitted Electronically

Do NOT Write in This Space - KCC USE ONLY
Date Tested: Results: Date Plugged: Date Repaired: Date Put Back in Service:
Review Completed by: Comments:
TA Approved: Yes Denied Date:

Mail to the Appropriate KCC Conservation Office:

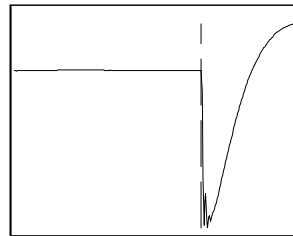
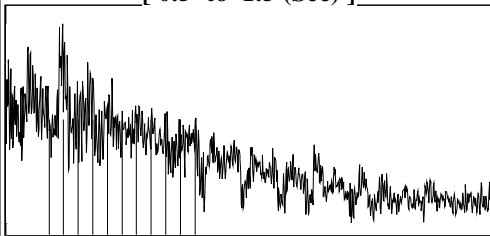
Table with 2 columns: Office Address, Phone. Rows for District Office #1, #2, #3, #4.

Group: Novy Oil & Gas Well: Macie #2 (acquired on: 09/25/20 08:12:37)



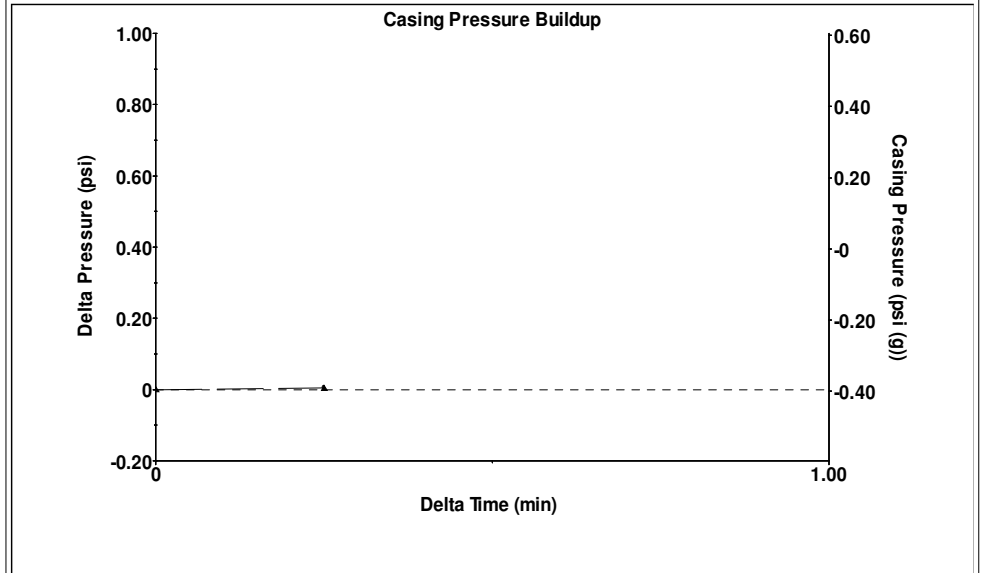
Filter Type High Pass Automatic Collar Count Yes Time 3.389 sec
 Manual Acoustic Velo 2113.33 ft/s Manual JTS/sec 33.3333 Joints 116.747 Jts
 Depth 3700.88 ft

[0.5 to 1.5 (Sec)]



Analysis Method: Automatic

Group: Novy Oil & Gas Well: Macie #2 (acquired on: 09/25/20 08:12:37)

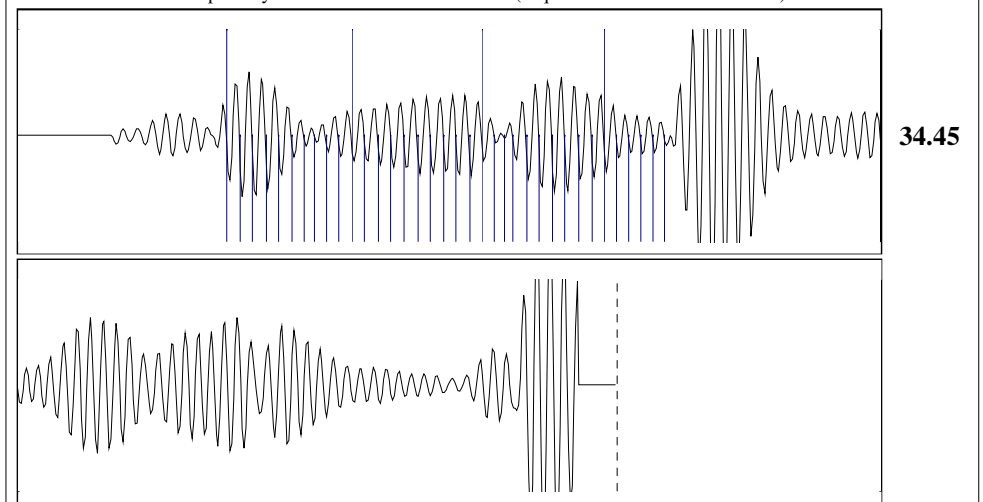


Change in Pressure 0.00 psi PT15262
 Change in Time 0.25 min Range 0 - ? psi

Group: Novy Oil & Gas Well: Macie #2 (acquired on: 09/25/20 08:12:37)

Production Current	Potential	Casing Pressure	Static
Oil - *-	- *- BBL/D	-0.4 psi (g)	Oil Column Height MD 0 ft
Water - *-	- *- BBL/D	Casing Pressure Buildup 0.004 psi	Gas/Liquid Interface Pressure 0.6 psi (g)
Gas - *-	- *- Mscf/D	0.25 min	Liquid Level Depth 3700.88 ft
IPR Method	Vogel	Pump Intake Depth - *- ft	Formation Depth 3702.00 ft
PBHP/SBHP	- *-	Static BHP 1.1 psi (g)	
Production Efficiency	0.0		
Oil 40 deg.API			
Water 1.05 Sp.Gr.H2O			
Gas 0.55 Sp.Gr.AIR			
Acoustic Velocity 2184.06 ft/s			

Group: Novy Oil & Gas Well: Macie #2 (acquired on: 09/25/20 08:12:37)



Acoustic Velocity 2184.06 ft/s Joints counted 35
 Joints Per Second 34.4488 jts/sec Joints to liquid level 116.747
 Depth to liquid level 3700.88 ft Filter Width 31.3333 35.3333
 Automatic Collar Count Yes Time to 1st Collar 0.484 1.5

October 01, 2020

Michael Novy0
Novy Oil & Gas, Inc.
PO BOX 559
GODDARD, KS 67052-0559

Re: Temporary Abandonment
API 15-155-21539-00-00
MACIE 1
SE/4 Sec.14-23S-10W
Reno County, Kansas

Dear Michael Novy0:

Your application for Temporary Abandonment (TA) for the above-listed well is denied for the following reasons(s):

Please re-shoot fluid level & re-submit TA.

Pursuant to K.A.R. 82-3-111, the well must be plugged, or returned to service, or obtain temporary abandonment status by 10/31/2020.

This deadline does NOT override any compliance deadline given to you in any Commission Order.

You may contact me if you have any questions.

Sincerely,
Virgil Clothier
KCC DISTRICT 2