

KANSAS CORPORATION COMMISSION
OIL & GAS CONSERVATION DIVISION

TEMPORARY ABANDONMENT WELL APPLICATION

OPERATOR: License#
Name:
Address 1:
Address 2:
City: State: Zip:
Contact Person:
Phone:
Contact Person Email:
Field Contact Person:
Field Contact Person Phone:

API No. 15-
Spot Description:
Sec. Twp. S. R.
GPS Location: Lat: Long:
Datum: NAD27 NAD83 WGS84
County: Elevation:
Lease Name: Well #:
Well Type: Oil Gas OG WSW Other:
SWD Permit #: ENHR Permit #:
Gas Storage Permit #:
Spud Date: Date Shut-In:

Table with 7 columns: Conductor, Surface, Production, Intermediate, Liner, Tubing. Rows include Size, Setting Depth, Amount of Cement, Top of Cement, Bottom of Cement.

Casing Fluid Level from Surface: How Determined? Date:
Casing Squeeze(s): to w / sacks of cement, to w / sacks of cement. Date:
Do you have a valid Oil & Gas Lease? Yes No
Depth and Type: Junk in Hole at Tools in Hole at Casing Leaks: Yes No Depth of casing leak(s):
Type Completion: ALT. I ALT. II Depth of: DV Tool: w / sacks of cement Port Collar: w / sack of cement
Packer Type: Size: Inch Set at: Feet
Total Depth: Plug Back Depth: Plug Back Method:

Geological Date:

Table with 4 columns: Formation Name, Formation Top, Formation Base, Completion Information. Rows 1 and 2.

UNDER PENALTY OF PERJURY I HEREBY ATTEST THAT THE INFORMATION CONTAINED HEREIN IS TRUE AND CORRECT TO THE BEST OF MY KNOWLEDGE

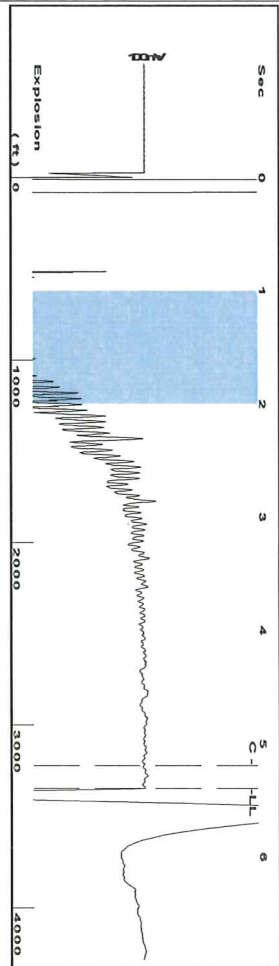
Submitted Electronically

Do NOT Write in This Space - KCC USE ONLY
Date Tested: Results: Date Plugged: Date Repaired: Date Put Back in Service:
Review Completed by: Comments:
TA Approved: Yes Denied Date:

Mail to the Appropriate KCC Conservation Office:

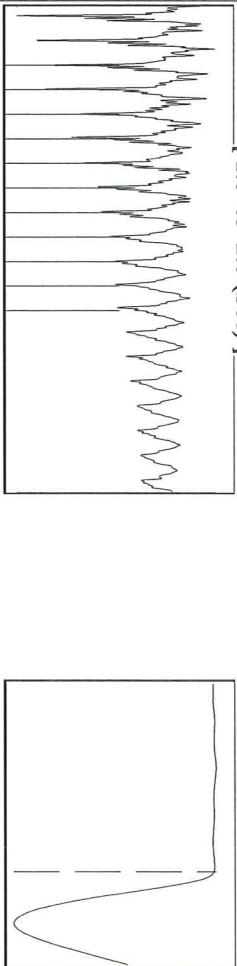
Table with 3 columns: District Office #, Address, Phone. Rows 1-4.

Group: Indian Oil Well: Boonedocker 3 (acquired on: 09/21/20 10:13:17)



Filter Type High Pass Automatic Collar Count Yes
 Manual Acoustic Velo 1243.65 ft/s Manual JTS/sec 19,8413
 Time 5.392 sec
 Joints 106.74 Jts
 Depth 3345.22 ft

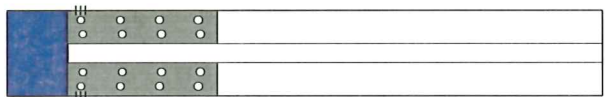
1.0 to 2.0 (Sec) |



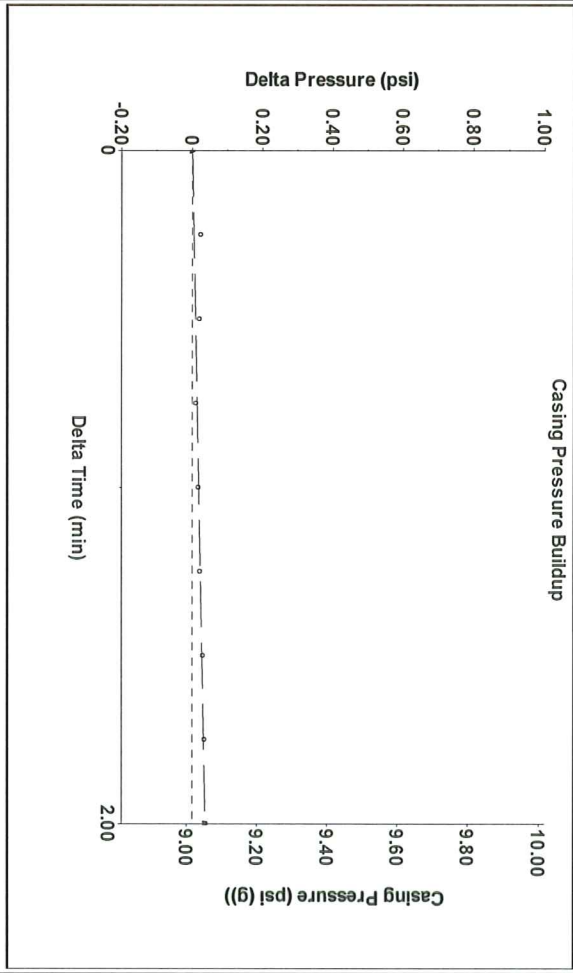
Analysis Method: Automatic

Group: Indian Oil Well: Boonedocker 3 (acquired on: 09/21/20 10:13:17)

Production Current	Potential	Casing Pressure	Producing
Oil - *-	- *- BBL/D	9.0 psi (g)	Annular
Water - *-	- *- BBL/D	Casing Pressure Buildup	Gas Flow
Gas - *-	- *- Masc/D	0.0 psi	0 Masc/D
IPR Method	Vogel	Gas/Liquid Interface Pressure	% Liquid
PBHP/SBHP	- *-	11.1 psi (g)	100 %
Production Efficiency	0.0	Liquid Level Depth	Pump Intake
Oil 40 deg API		3345.22 ft	529.6 psi (g)
Water 1.05 Sp.Gr:H2O		Pump Intake Depth	Producing BHP
Gas 0.75 Sp.Gr:AIR		4900.00 ft	487.3 psi (g)
Acoustic Velocity	1240.81 ft/s	Formation Depth	Static BHP
		4770.00 ft	- *- psi (g)
Formation Submergence			
Total Gaseous Liquid Column HT (TYD)		1555 ft	
Equivalent Gas Free Liquid HT (TYD)		1550 ft	

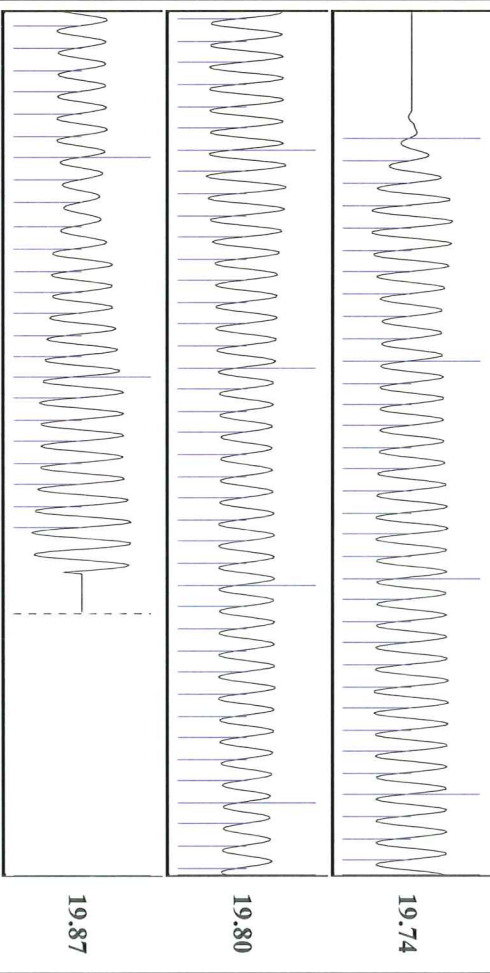


Group: Indian Oil Well: Boonedocker 3 (acquired on: 09/21/20 10:13:17)



Change in Pressure 0.04 psi PT 15565
 Change in Time 2.00 min Range 0 - ? psi

Group: Indian Oil Well: Boonedocker 3 (acquired on: 09/21/20 10:13:17)



Acoustic Velocity 1240.81 ft/s Joints counted 97
 Joints Per Second 19.7959 Jts/sec Joints to liquid level 106.74
 Depth to liquid level 3345.22 ft Filter Width 17.8413
 Automatic Collar Count Yes Time to 1st Collar 5.192

October 06, 2020

Anthony Farrar
Indian Oil Co., Inc.
2507 SE US HWY 160
PO BOX 209
MEDICINE LODGE, KS 67104-0209

Re: Temporary Abandonment
API 15-007-23828-00-00
BOONEDOCKER 3
SE/4 Sec.06-35S-11W
Barber County, Kansas

Dear Anthony Farrar:

"Your temporary abandonment (TA) application for the well listed above has been approved. In accordance with K.A.R. 82-3-111 the TA status of this well will expire 10/06/2021.

- * If you return this well to service or plug it, please notify the District Office.
- * If you sell this well you are required to file a Transfer of Operator form, T-1.
- * If the well will remain temporarily abandoned, you must submit a new TA application, CP-111, before 10/06/2021.

You may contact me at the number above if you have questions.

Very truly yours,

Michael Maier"