

KANSAS CORPORATION COMMISSION
OIL & GAS CONSERVATION DIVISION

TEMPORARY ABANDONMENT WELL APPLICATION

OPERATOR: License#
Name:
Address 1:
Address 2:
City: State: Zip:
Contact Person:
Phone:
Contact Person Email:
Field Contact Person:
Field Contact Person Phone:

API No. 15-
Spot Description:
Sec. Twp. S. R.
GPS Location: Lat, Long
Datum: NAD27, NAD83, WGS84
County: Elevation:
Lease Name: Well #:
Well Type: Oil, Gas, OG, WSW, Other
SWD Permit #: ENHR Permit #:
Gas Storage Permit #:
Spud Date: Date Shut-In:

Table with 7 columns: Conductor, Surface, Production, Intermediate, Liner, Tubing. Rows include Size, Setting Depth, Amount of Cement, Top of Cement, Bottom of Cement.

Casing Fluid Level from Surface: How Determined? Date:
Casing Squeeze(s): to w / sacks of cement, to w / sacks of cement. Date:
Do you have a valid Oil & Gas Lease? Yes No
Depth and Type: Junk in Hole at Tools in Hole at Casing Leaks: Yes No Depth of casing leak(s):
Type Completion: ALT. I ALT. II Depth of: DV Tool: w / sacks of cement Port Collar: w / sack of cement
Packer Type: Size: Inch Set at: Feet
Total Depth: Plug Back Depth: Plug Back Method:

Geological Data:

Table with 4 columns: Formation Name, Formation Top, Formation Base, Completion Information. Rows 1 and 2.

UNDER PENALTY OF PERJURY I HEREBY ATTEST THAT THE INFORMATION CONTAINED HEREIN IS TRUE AND CORRECT TO THE BEST OF MY KNOWLEDGE

Submitted Electronically

Do NOT Write in This Space - KCC USE ONLY
Date Tested: Results: Date Plugged: Date Repaired: Date Put Back in Service:
Review Completed by: Comments:
TA Approved: Yes Denied Date:

Mail to the Appropriate KCC Conservation Office:

Table with 3 columns: District Office #, Address, Phone. Rows 1-4.



Liquid Level

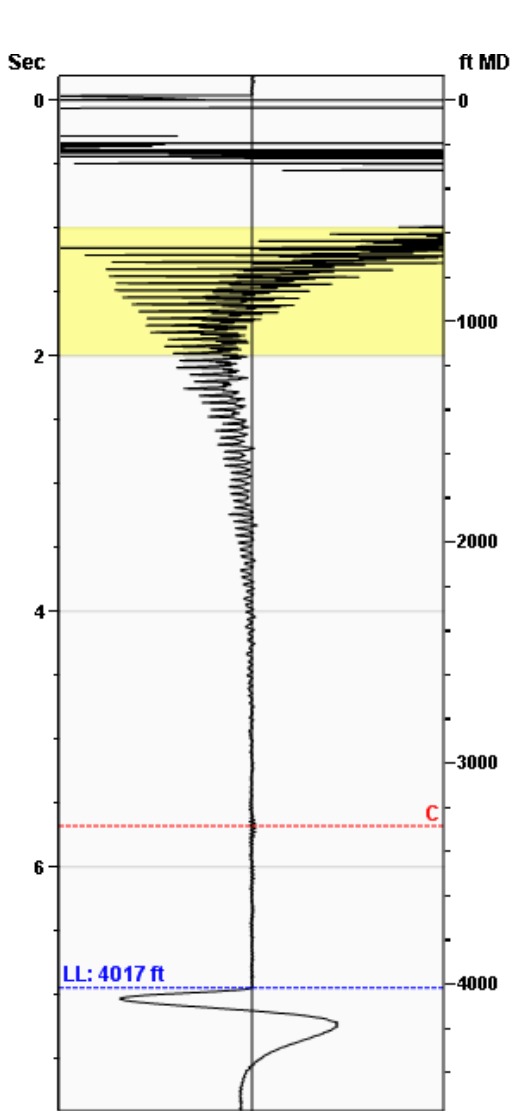
4017 ft MD

Fluid Above Pump

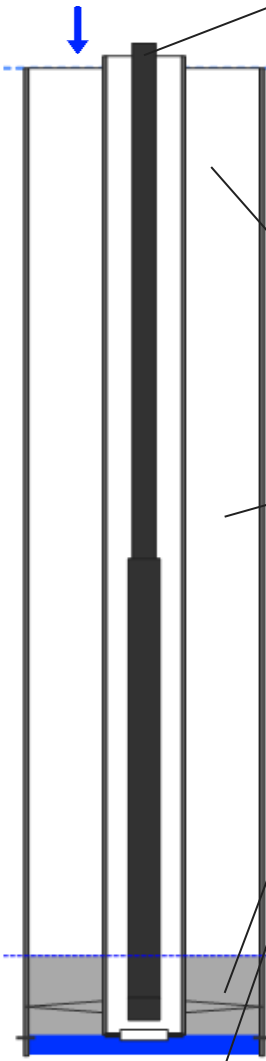
358 ft TVD

Equivalent Gas Free Above Pump

358 ft TVD



Gun - WG 3656



Production

Date Entered	09/30/20		
Oil	Current	Potential	BBL/D
Water	**	**	BBL/D
Gas	**	**	Mscf/D
IPR Method	Vogel		
PBHP/SBHP	-0.00		
Producing Efficiency	0.00%		

Casing Pressure

Pressure	-27.9 psi (g)
----------	---------------

Annular Gas Flow

Gas Flow	0.0 Mscf/D
----------	------------

Fluid Properties

% Liquid Above Pump	100.00%
% Liquid Below Pump	100.00%

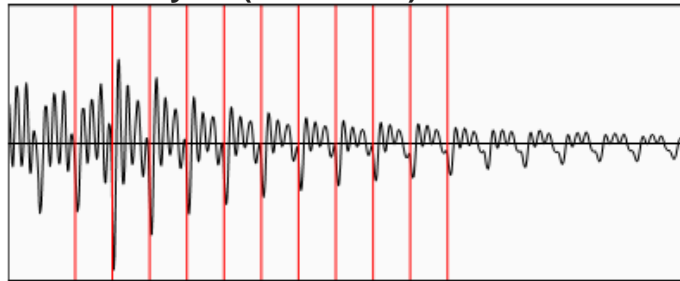
Depths

Pump Intake Depth	4375 ft
Formation Depth	4402 ft

Wellbore Pressures

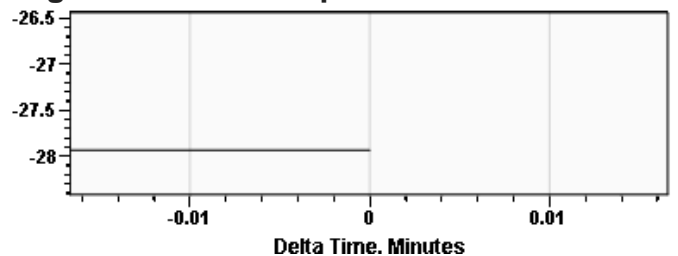
PIP	92.1 psi (g)
PBHP	104.3 psi (g)
SBHP	**
Gas/Liq Interface	-29.2 psi (g)

Collar Analysis (Automatic)



Average Acoustic Velocity	1156 ft/s
Average Joints Per Sec.	18.24 Jts/sec
Joints To Liquid	126.70 Jts

Casing Pressure Buildup



Casing Pressure	-27.9 psi (g)
Buildup	0.0 psi (g)
Buildup Time	0 sec
Gas Gravity from Collar Analysis (Automatic)	0.7000 Air = 1

Comments and Recommendations

Fluid level for TA

Roberts Resources, Inc.
 P.O. Box 75187
 Wichita, KS 67275
 kent@ict-geo.com
 316-215-1683

October 13, 2020

Kent Roberts
AGV Corp.
123 N MAIN
PO BOX 377
ATTICA, KS 67009-0377

Re: Temporary Abandonment
API 15-007-22885-00-00
MARTIN 4
NE/4 Sec.27-32S-10W
Barber County, Kansas

Dear Kent Roberts:

"Your temporary abandonment (TA) application for the well listed above has been approved. In accordance with K.A.R. 82-3-111 the TA status of this well will expire 10/13/2021.

- * If you return this well to service or plug it, please notify the District Office.
- * If you sell this well you are required to file a Transfer of Operator form, T-1.
- * If the well will remain temporarily abandoned, you must submit a new TA application, CP-111, before 10/13/2021.

You may contact me at the number above if you have questions.

Very truly yours,

Michael Maier"