

KANSAS CORPORATION COMMISSION
OIL & GAS CONSERVATION DIVISION

TEMPORARY ABANDONMENT WELL APPLICATION

OPERATOR: License#
Name:
Address 1:
Address 2:
City: State: Zip:
Contact Person:
Phone:
Contact Person Email:
Field Contact Person:
Field Contact Person Phone:

API No. 15-
Spot Description:
Sec. Twp. S. R.
GPS Location: Lat: Long:
Datum: NAD27 NAD83 WGS84
County: Elevation:
Lease Name: Well #:
Well Type: Oil Gas OG WSW Other:
SWD Permit #: ENHR Permit #:
Gas Storage Permit #:
Spud Date: Date Shut-In:

Table with 7 columns: Conductor, Surface, Production, Intermediate, Liner, Tubing. Rows include Size, Setting Depth, Amount of Cement, Top of Cement, Bottom of Cement.

Casing Fluid Level from Surface: How Determined? Date:
Casing Squeeze(s): to w / sacks of cement, to w / sacks of cement. Date:
Do you have a valid Oil & Gas Lease? Yes No
Depth and Type: Junk in Hole at Tools in Hole at Casing Leaks: Yes No Depth of casing leak(s):
Type Completion: ALT. I ALT. II Depth of: DV Tool: w / sacks of cement Port Collar: w / sack of cement
Packer Type: Size: Inch Set at: Feet
Total Depth: Plug Back Depth: Plug Back Method:

Geological Data:

Table with 4 columns: Formation Name, Formation Top, Formation Base, Completion Information. Rows 1 and 2.

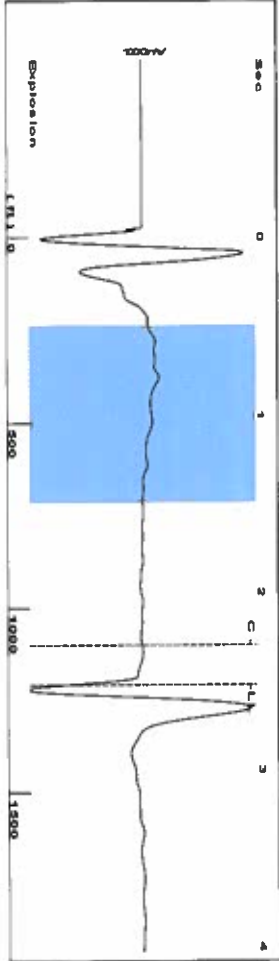
UNDER PENALTY OF PERJURY I HEREBY ATTEST THAT THE INFORMATION CONTAINED HEREIN IS TRUE AND CORRECT TO THE BEST OF MY KNOWLEDGE

Submitted Electronically

Do NOT Write in This Space - KCC USE ONLY
Date Tested: Results: Date Plugged: Date Repaired: Date Put Back in Service:
Review Completed by: Comments:
TA Approved: Yes Denied Date:

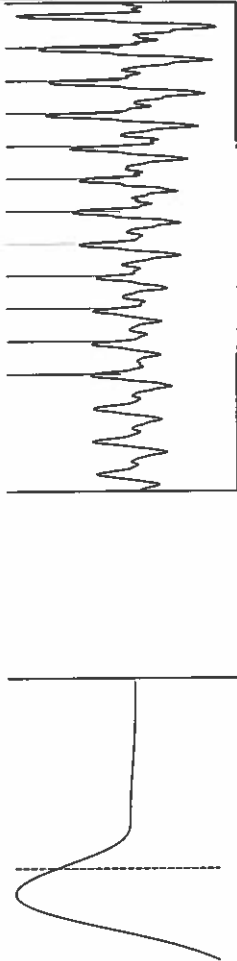
Mail to the Appropriate KCC Conservation Office:

Table with 3 columns: District Office, Address, Phone. Rows for District Office #1, #2, #3, #4.



Filter Type High Pass Automatic Collar Count Yes
 Manual Acoustic Velocity 269 N/s Manual JTS/sec 14 9254
 Time 2.52 sec
 Joints 38 1048 Jts
 Depth 1207.92 ft

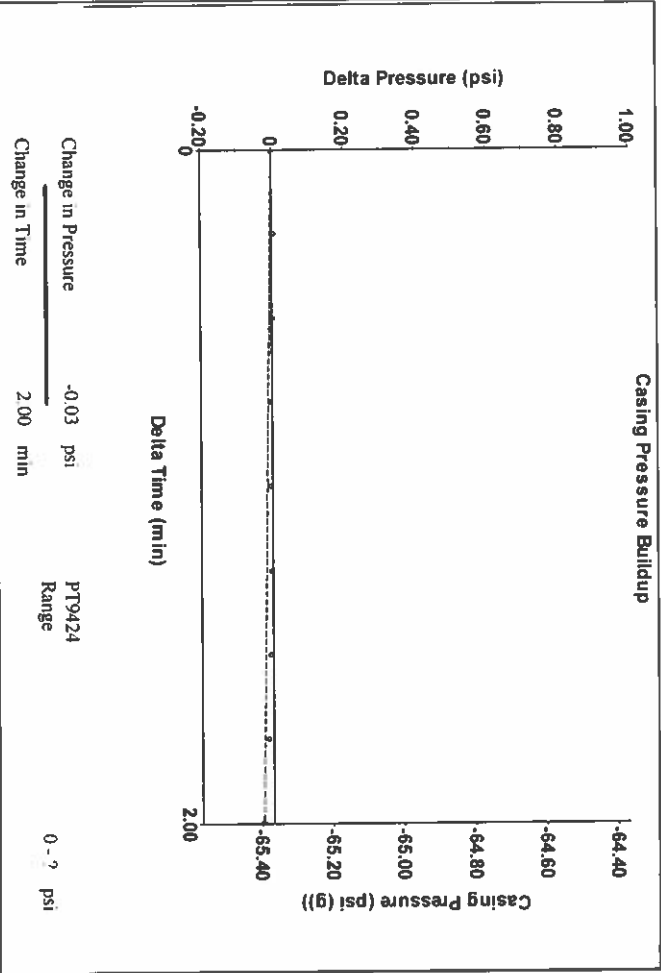
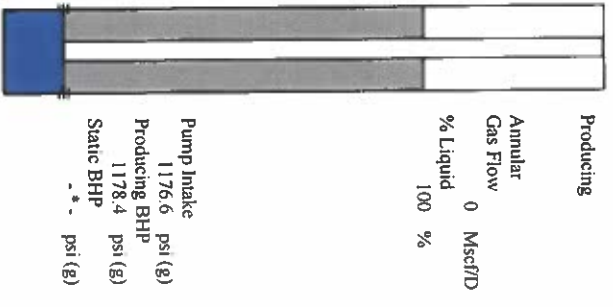
1.05 to 1.5 (Sec) |



Analysis Method: Automatic

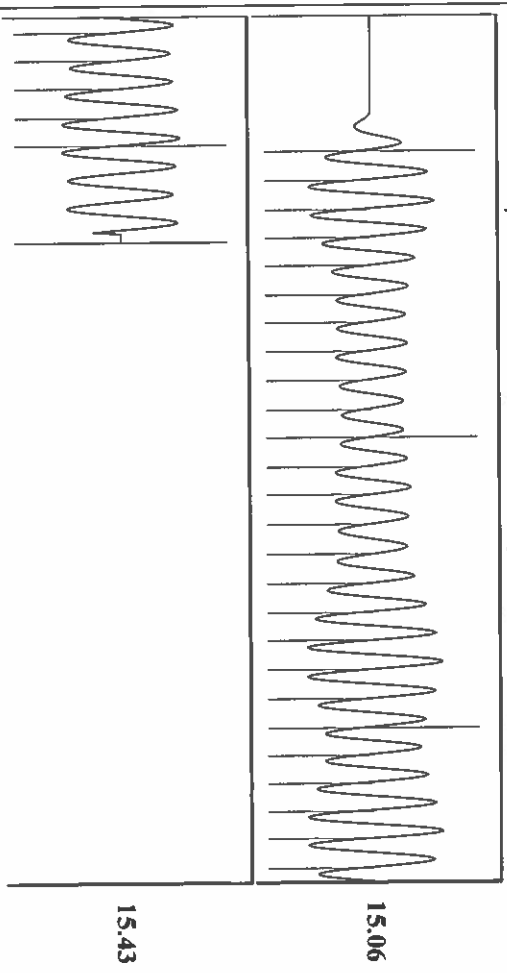
Group: TAID WELLS Well: WMSU 602 (acquired on: 10/13/20 14:16:13)

Production	Potential	Casing Pressure	Producing
Current	BB/LD	-14.7 psi (g)	Annular
Oil	BB/LD	Casing Pressure Buildup	Gas Flow
Water	BB/LD	-0.0 psi	% Liquid
Gas	Misc/D	2.00 min	100 %
IPR Method	Vogel	Gas/Liquid Interface Pressure	
PBHP/SBHP		-14.7 psi (g)	
Production Efficiency	0.0		
		Liquid Level Depth	
Oil	40 deg API	1207.92 ft	
Water	1.05 Sp.Gr. H2O	Pump Intake Depth	
Gas	0.70 Sp.Gr. AIR	4845.00 ft	
Acoustic Velocity	958.669 ft/s	Formation Depth	
		4849.00 ft	
Formation Submergence			
Total Gaseous Liquid Column HT (TVD)			
Equivalent Gas Free Liquid HT (TVD)			
Acoustic Test			



Change in Pressure -0.03 psi
 Change in Time 2.00 min
 PT9424 Range

Group: TAID WELLS Well: WMSU 602 (acquired on: 10/13/20 14:16:13)



Acoustic Velocity 958.669 ft/s
 Joints Per Second 15.121 Jts/sec
 Depth to liquid level 1207.92 ft
 Automatic Collar Count Yes

Joints counted 30
 Joints to liquid level 38 1048
 Filter Width 12.9254
 Time to 1st Collar 0.312

15.43

15.06

October 20, 2020

Katherine McClurkan
Merit Energy Company, LLC
13727 Noel Road, Suite 1200
Dallas, TX 75240

Re: Temporary Abandonment
API 15-129-10332-00-00
Willburton Morrow Sand Unit (WMSU) 602
SW/4 Sec.28-34S-41W
Morton County, Kansas

Dear Katherine McClurkan:

"Your temporary abandonment (TA) application for the well listed above has been approved. In accordance with K.A.R. 82-3-111 the TA status of this well will expire 10/20/2021.

- * If you return this well to service or plug it, please notify the District Office.
- * If you sell this well you are required to file a Transfer of Operator form, T-1.
- * If the well will remain temporarily abandoned, you must submit a new TA application, CP-111, before 10/20/2021.

You may contact me at the number above if you have questions.

Very truly yours,

Michael Maier"