

KANSAS CORPORATION COMMISSION
OIL & GAS CONSERVATION DIVISION

TEMPORARY ABANDONMENT WELL APPLICATION

OPERATOR: License#
Name:
Address 1:
Address 2:
City: State: Zip:
Contact Person:
Phone:
Contact Person Email:
Field Contact Person:
Field Contact Person Phone:

API No. 15-
Spot Description:
Sec. Twp. S. R.
GPS Location: Lat: Long:
Datum: NAD27 NAD83 WGS84
County: Elevation:
Lease Name: Well #:
Well Type: Oil Gas OG WSW Other:
SWD Permit #: ENHR Permit #:
Gas Storage Permit #:
Spud Date: Date Shut-In:

Table with 7 columns: Conductor, Surface, Production, Intermediate, Liner, Tubing. Rows include Size, Setting Depth, Amount of Cement, Top of Cement, Bottom of Cement.

Casing Fluid Level from Surface: How Determined? Date:
Casing Squeeze(s): to w / sacks of cement, to w / sacks of cement. Date:
Do you have a valid Oil & Gas Lease? Yes No
Depth and Type: Junk in Hole at Tools in Hole at Casing Leaks: Yes No Depth of casing leak(s):
Type Completion: ALT. I ALT. II Depth of: DV Tool: w / sacks of cement Port Collar: w / sack of cement
Packer Type: Size: Inch Set at: Feet
Total Depth: Plug Back Depth: Plug Back Method:

Geological Data:

Table with 4 columns: Formation Name, Formation Top, Formation Base, Completion Information. Rows 1 and 2.

UNDER PENALTY OF PERJURY I HEREBY ATTEST THAT THE INFORMATION CONTAINED HEREIN IS TRUE AND CORRECT TO THE BEST OF MY KNOWLEDGE

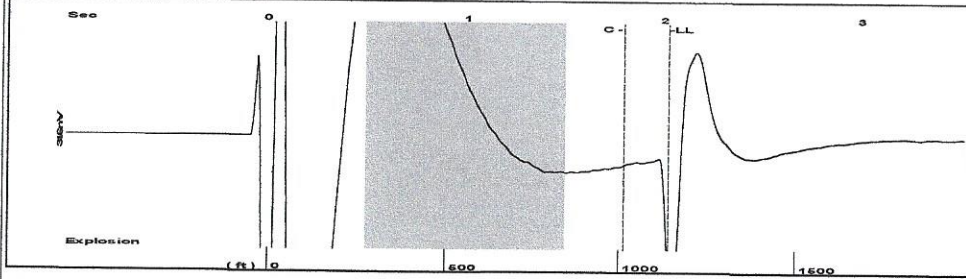
Submitted Electronically

Do NOT Write in This Space - KCC USE ONLY
Date Tested: Results: Date Plugged: Date Repaired: Date Put Back in Service:
Review Completed by: Comments:
TA Approved: Yes Denied Date:

Mail to the Appropriate KCC Conservation Office:

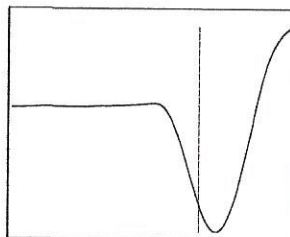
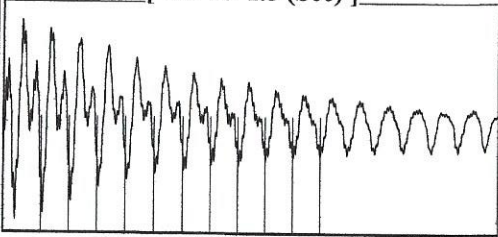
Table with 2 columns: Office Address, Phone. Rows for District Office #1, #2, #3, #4.

Group: Radium Well: Hetzke 1-6 (acquired on: 09/30/20 10:58:57)



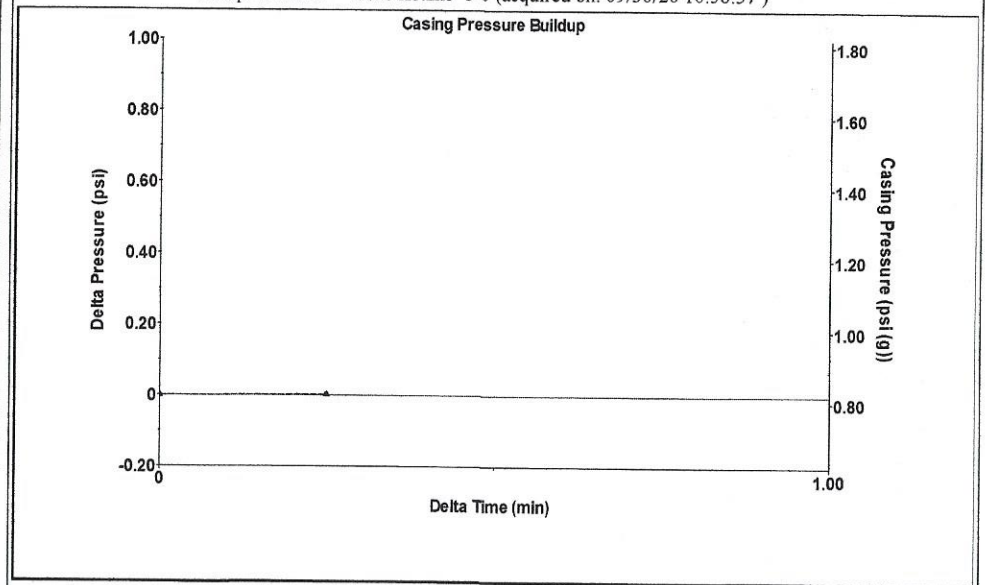
Filter Type High Pass Automatic Collar Count Yes Time 2.024 sec
 Manual Acoustic Velocity 1124.11 ft/s Manual JTS/sec 17.7305 Joints 35.9526 Jts
 Depth 1139.70 ft

[0.5 to 1.5 (Sec)]



Analysis Method: Automatic

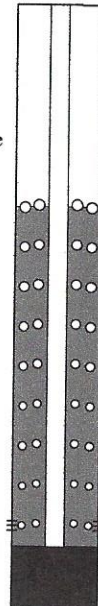
Group: Radium Well: Hetzke 1-6 (acquired on: 09/30/20 10:58:57)



Change in Pressure 0.00 psi PT13440
 Range 0 - ? psi
 Change in Time 0.25 min

Group: Radium Well: Hetzke 1-6 (acquired on: 09/30/20 10:58:57)

Production	Potential	Casing Pressure	Producing
Oil - * -	- * - BBL/D	0.8 psi (g)	Annular Gas Flow 0 Mscf/D
Water - * -	- * - BBL/D	Casing Pressure Buildup 0.0 psi	% Liquid 100 %
Gas - * -	- * - Mscf/D	0.25 min	
IPR Method Vogel		Gas/Liquid Interface Pressure 1.3 psi (g)	
PBHP/SBHP - * -			
Production Efficiency 0.0			
Oil 40 deg.API		Liquid Level Depth 1139.70 ft	
Water 1.05 Sp.Gr.H2O		Pump Intake Depth 3865.00 ft	
Gas 0.85 Sp.Gr.AIR		Formation Depth 3696.00 ft	
Acoustic Velocity 1126.18 ft/s			

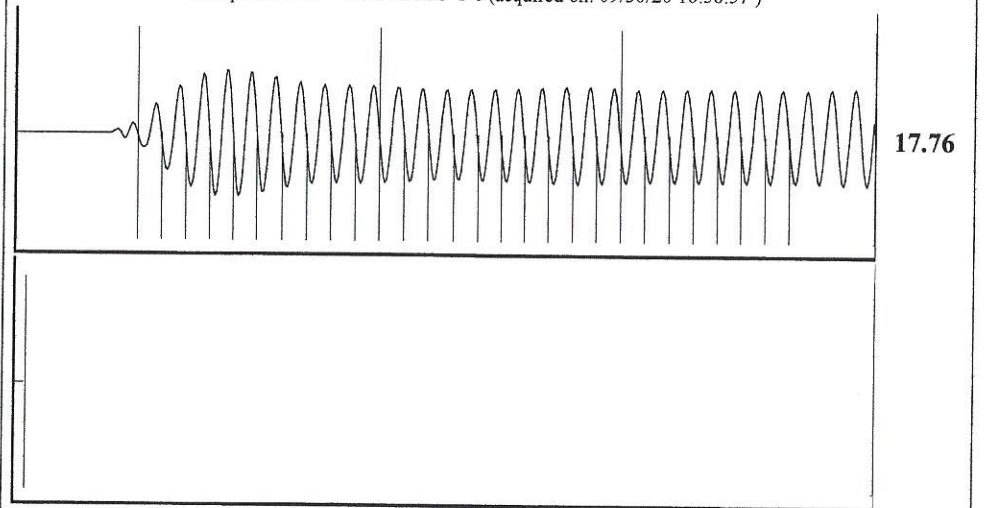


Formation Submergence
 Total Gaseous Liquid Column HT (TVD) 2725 ft
 Equivalent Gas Free Liquid HT (TVD) 2725 ft

Acoustic Test

Pump Intake 901.9 psi (g)
 Producing BHP 849.2 psi (g)
 Static BHP - * - psi (g)

Group: Radium Well: Hetzke 1-6 (acquired on: 09/30/20 10:58:57)



Acoustic Velocity 1126.18 ft/s Joints counted 27
 Joints Per Second 17.7632 jts/sec Joints to liquid level 35.9526
 Depth to liquid level 1139.7 ft Filter Width 15.7305 19.7305
 Automatic Collar Count Yes Time to 1st Collar 0.28 1.8

Conservation Division
District Office No. 4
2301 E. 13th Street
Hays, KS 67601-2651



Phone: 785-261-6250
Fax: 785-625-0564
<http://kcc.ks.gov/>

Susan K. Duffy, Chair
Dwight D. Keen, Commissioner
Andrew J. French, Commissioner

Laura Kelly, Governor

October 21, 2020

Loveness Mpanje
F. G. Holl Company L.L.C.
9431 E CENTRAL STE 100
WICHITA, KS 67206-2563

Re: Temporary Abandonment
API 15-009-25429-00-00
HETZKE/DIRKS 1-6
NW/4 Sec.06-20S-15W
Barton County, Kansas

Dear Loveness Mpanje:

"Your temporary abandonment (TA) application for the well listed above has been approved. In accordance with K.A.R. 82-3-111 the TA status of this well will expire 10/21/2021.

- * If you return this well to service or plug it, please notify the District Office.
- * If you sell this well you are required to file a Transfer of Operator form, T-1.
- * If the well will remain temporarily abandoned, you must submit a new TA application, CP-111, before 10/21/2021.

You may contact me at the number above if you have questions.

Very truly yours,

RICHARD WILLIAMS"