

KANSAS CORPORATION COMMISSION
OIL & GAS CONSERVATION DIVISION

TEMPORARY ABANDONMENT WELL APPLICATION

OPERATOR: License#
Name:
Address 1:
Address 2:
City: State: Zip:
Contact Person:
Phone:
Contact Person Email:
Field Contact Person:
Field Contact Person Phone:

API No. 15-
Spot Description:
Sec. Twp. S. R.
GPS Location: Lat: Long:
Datum: NAD27 NAD83 WGS84
County: Elevation:
Lease Name: Well #:
Well Type: Oil Gas OG WSW Other:
SWD Permit #: ENHR Permit #:
Gas Storage Permit #:
Spud Date: Date Shut-In:

Table with 7 columns: Conductor, Surface, Production, Intermediate, Liner, Tubing. Rows include Size, Setting Depth, Amount of Cement, Top of Cement, Bottom of Cement.

Casing Fluid Level from Surface: How Determined? Date:
Casing Squeeze(s): to w / sacks of cement, to w / sacks of cement. Date:
Do you have a valid Oil & Gas Lease? Yes No
Depth and Type: Junk in Hole at Tools in Hole at Casing Leaks: Yes No Depth of casing leak(s):
Type Completion: ALT. I ALT. II Depth of: DV Tool: w / sacks of cement Port Collar: w / sack of cement
Packer Type: Size: Inch Set at: Feet
Total Depth: Plug Back Depth: Plug Back Method:

Geological Data:

Table with 4 columns: Formation Name, Formation Top, Formation Base, Completion Information. Rows 1 and 2.

UNDER PENALTY OF PERJURY I HEREBY ATTEST THAT THE INFORMATION CONTAINED HEREIN IS TRUE AND CORRECT TO THE BEST OF MY KNOWLEDGE

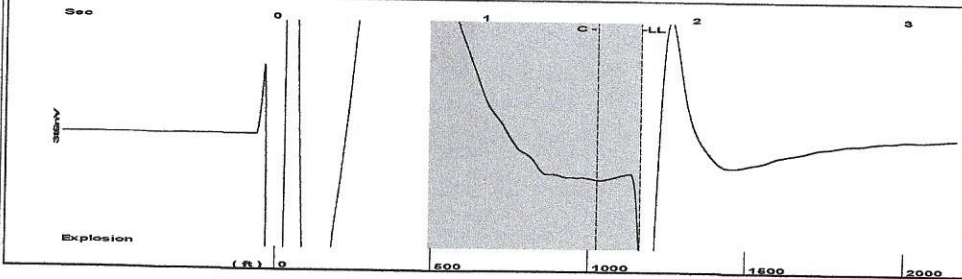
Submitted Electronically

Do NOT Write in This Space - KCC USE ONLY
Date Tested: Results: Date Plugged: Date Repaired: Date Put Back in Service:
Review Completed by: Comments:
TA Approved: Yes Denied Date:

Mail to the Appropriate KCC Conservation Office:

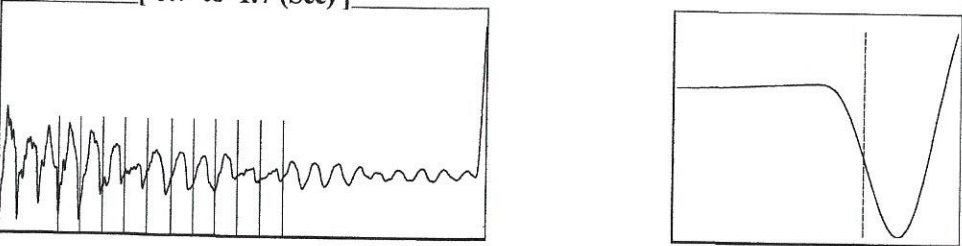
Table with 3 columns: District Office #, Address, Phone. Rows 1-4.

Group: Belpre Well: Rollins 2-9 (acquired on: 10/15/20 11:18:23)



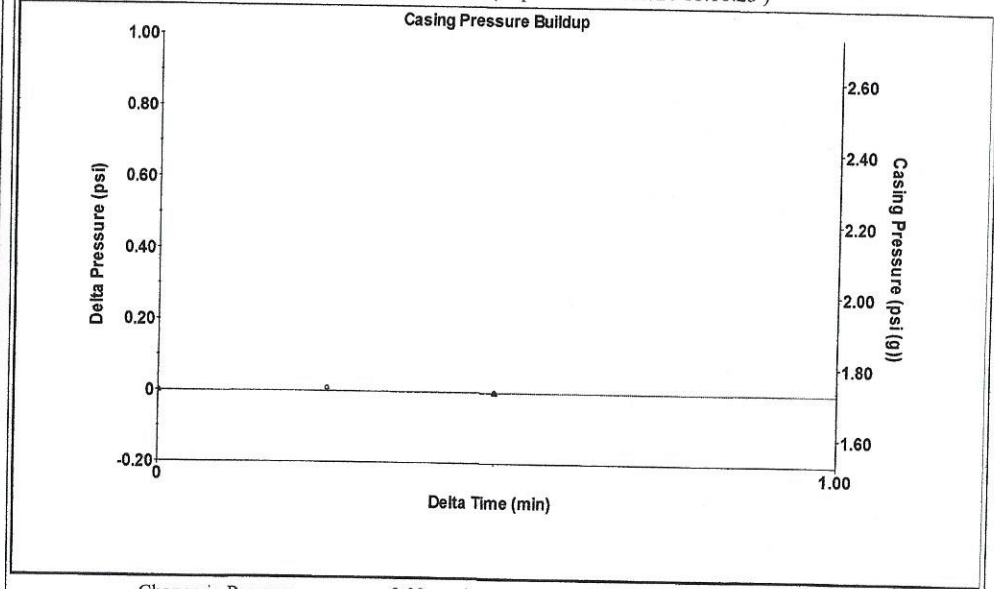
Filter Type High Pass Automatic Collar Count Yes Time 1.738 sec
 Manual Acoustic Velo 1327.47 ft/s Manual JTS/sec 21.978 Joints 38.5 Jts
 Depth 1162.70 ft

[0.7 to 1.7 (Sec)]



Analysis Method: Automatic

Group: Belpre Well: Rollins 2-9 (acquired on: 10/15/20 11:18:23)

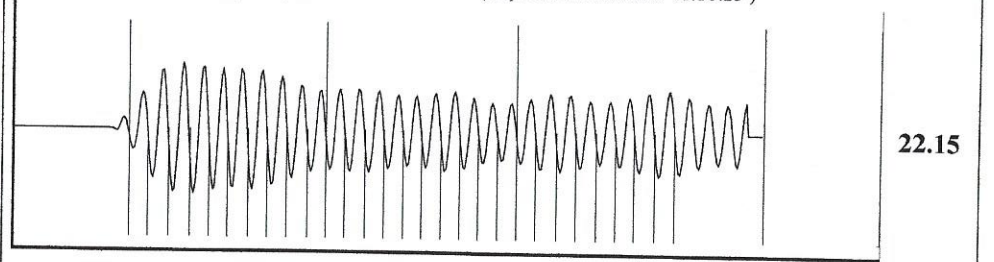


Change in Pressure -0.00 psi PT13440
 Range 0 - ? psi
 Change in Time 0.50 min

Group: Belpre Well: Rollins 2-9 (acquired on: 10/15/20 11:18:23)

Production	Potential	Casing Pressure	Producing
Current	- * - BBL/D	1.7 psi (g)	Annular
Oil - * -	- * - BBL/D	Casing Pressure Buildup	Gas Flow
Water - * -	- * - Mscf/D	-0.0 psi	0 Mscf/D
Gas - * -		0.50 min	% Liquid
		Gas/Liquid Interface Pressure	100 %
IPR Method	Vogel	2.2 psi (g)	
PBHP/SBHP	- * -	Liquid Level Depth	
Production Efficiency	0.0	1162.70 ft	
		Pump Intake Depth	
Oil 40 deg.API		4379.00 ft	
Water 1.05 Sp.Gr.H2O		Formation Depth	
Gas 0.65 Sp.Gr.AIR		4332.00 ft	
Acoustic Velocity	1337.97 ft/s		
Formation Submergence		Pump Intake	
Total Gaseous Liquid Column HT (TVD)	3216 ft	1060.9 psi (g)	
Equivalent Gas Free Liquid HT (TVD)	3216 ft	Producing BHP	
Acoustic Test		1046.4 psi (g)	
		Static BHP	
		- * - psi (g)	

Group: Belpre Well: Rollins 2-9 (acquired on: 10/15/20 11:18:23)



Acoustic Velocity 1337.97 ft/s Joints counted 28
 Joints Per Second 22.1519 jts/sec Joints to liquid level 38.5
 Depth to liquid level 1162.7 ft Filter Width 19.978 23.978
 Automatic Collar Count Yes Time to 1st Collar 0.268 1.532

October 27, 2020

Loveness Mpanje
F. G. Holl Company L.L.C.
9431 E CENTRAL STE 100
WICHITA, KS 67206-2563

Re: Temporary Abandonment
API 15-047-20652-00-00
ROLLINS 2-9
SW/4 Sec.09-24S-17W
Edwards County, Kansas

Dear Loveness Mpanje:

"Your temporary abandonment (TA) application for the well listed above has been approved. In accordance with K.A.R. 82-3-111 the TA status of this well will expire 10/27/2021.

- * If you return this well to service or plug it, please notify the District Office.
- * If you sell this well you are required to file a Transfer of Operator form, T-1.
- * If the well will remain temporarily abandoned, you must submit a new TA application, CP-111, before 10/27/2021.

You may contact me at the number above if you have questions.

Very truly yours,

Michael Maier"