

KANSAS CORPORATION COMMISSION
OIL & GAS CONSERVATION DIVISION

TEMPORARY ABANDONMENT WELL APPLICATION

OPERATOR: License#
Name:
Address 1:
Address 2:
City: State: Zip:
Contact Person:
Phone:
Contact Person Email:
Field Contact Person:
Field Contact Person Phone:

API No. 15-
Spot Description:
Sec. Twp. S. R.
feet from N / S Line of Section
feet from E / W Line of Section
GPS Location: Lat: , Long:
Datum: NAD27 NAD83 WGS84
County: Elevation: GL KB
Lease Name: Well #:
Well Type: Oil Gas OG WSW Other:
SWD Permit #: ENHR Permit #:
Gas Storage Permit #:
Spud Date: Date Shut-In:

Table with 7 columns: Conductor, Surface, Production, Intermediate, Liner, Tubing. Rows include Size, Setting Depth, Amount of Cement, Top of Cement, Bottom of Cement.

Casing Fluid Level from Surface: How Determined? Date:
Casing Squeeze(s): to w / sacks of cement, to w / sacks of cement. Date:
Do you have a valid Oil & Gas Lease? Yes No
Depth and Type: Junk in Hole at Tools in Hole at Casing Leaks: Yes No Depth of casing leak(s):
Type Completion: ALT. I ALT. II Depth of: DV Tool: w / sacks of cement Port Collar: w / sack of cement
Packer Type: Size: Inch Set at: Feet
Total Depth: Plug Back Depth: Plug Back Method:

Geological Date:

Table with 4 columns: Formation Name, Formation Top, Formation Base, Completion Information. Rows 1 and 2.

UNDER PENALTY OF PERJURY I HEREBY ATTEST THAT THE INFORMATION CONTAINED HEREIN IS TRUE AND CORRECT TO THE BEST OF MY KNOWLEDGE

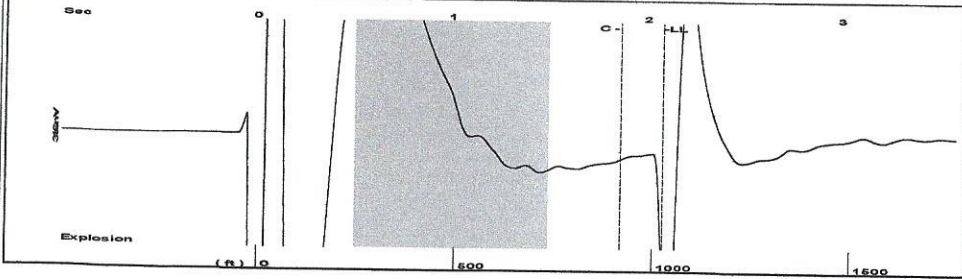
Submitted Electronically

Form with fields: Do NOT Write in This Space - KCC USE ONLY, Date Tested, Results, Date Plugged, Date Repaired, Date Put Back in Service, Review Completed by, Comments, TA Approved: Yes Denied, Date.

Mail to the Appropriate KCC Conservation Office:

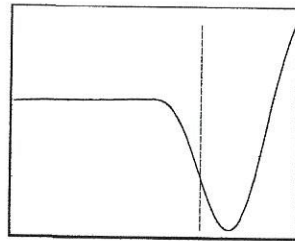
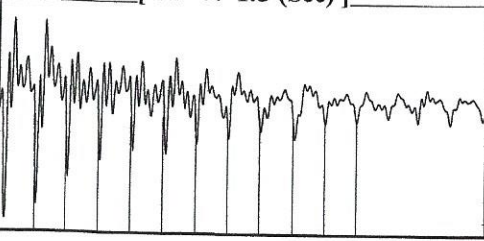
Table with 3 columns: District Office #, Address, Phone. Rows 1-4.

Group: Belpre Well: Mayhew C 1-33 (acquired on: 10/15/20 13:42:10)



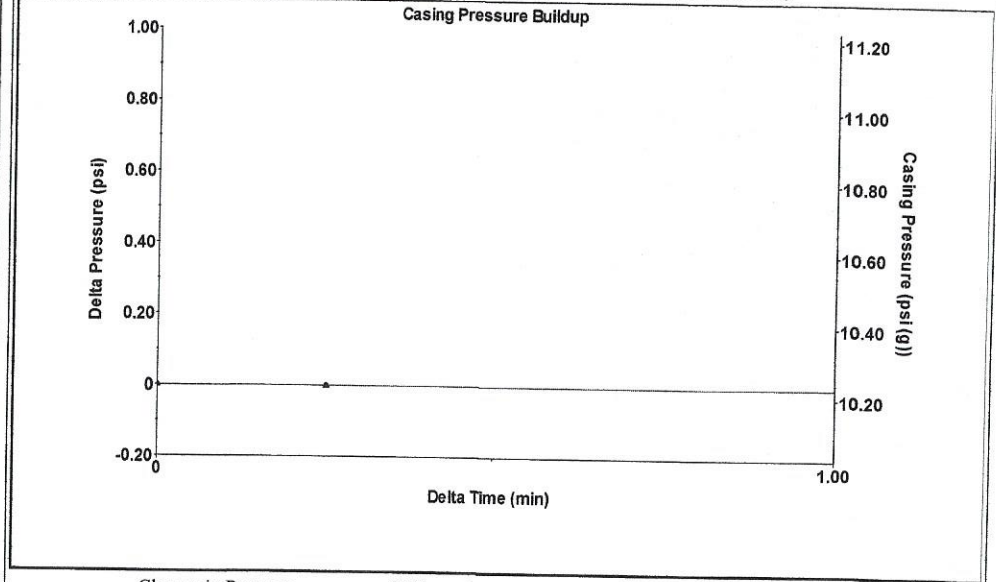
Filter Type High Pass Automatic Collar Count Yes Time 2.082 sec  
 Manual Acoustic Velo962.064 ft/s Manual JTS/sec 15.1745 Joints 32.3694 Jts  
 Depth 1026.11 ft

[ 0.5 to 1.5 (Sec) ]



Analysis Method: Automatic

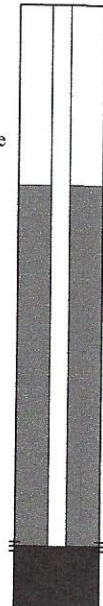
Group: Belpre Well: Mayhew C 1-33 (acquired on: 10/15/20 13:42:10)



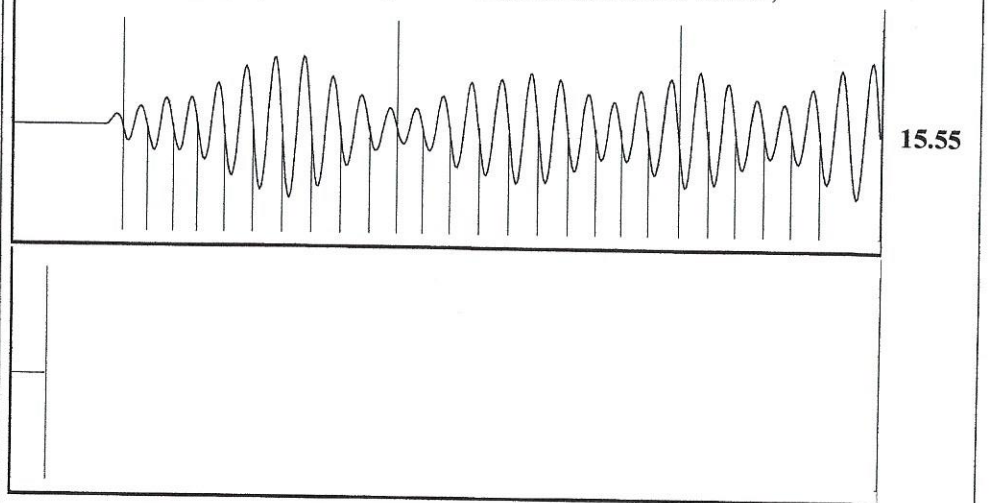
Change in Pressure -0.00 psi PT13440  
 Change in Time 0.25 min Range 0 - ? psi

Group: Belpre Well: Mayhew C 1-33 (acquired on: 10/15/20 13:42:10)

Production	Potential	Casing Pressure	Producing
Current		10.2 psi (g)	
Oil - * -	- * - BBL/D	Casing Pressure Buildup	Annular Gas Flow
Water - * -	- * - BBL/D	-0.0 psi	0 Mscf/D
Gas - * -	- * - Mscf/D	0.25 min	% Liquid
		Gas/Liquid Interface Pressure	100 %
		11.1 psi (g)	
IPR Method	Vogel	Liquid Level Depth	
PBHP/SBHP	- * -	1026.11 ft	
Production Efficiency	0.0	Pump Intake Depth	
		4096.00 ft	
Oil 40 deg.API		Formation Depth	
Water 1.05 Sp.Gr.H2O		4096.00 ft	
Gas 0.98 Sp.Gr.AIR			
Acoustic Velocity	985.697 ft/s		
Formation Submergence			
Total Gaseous Liquid Column HT (TVD)	3070 ft		
Equivalent Gas Free Liquid HT (TVD)	3070 ft		
Acoustic Test			
		Pump Intake	
		1014.9 psi (g)	
		Producing BHP	
		1014.9 psi (g)	
		Static BHP	
		- * - psi (g)	



Group: Belpre Well: Mayhew C 1-33 (acquired on: 10/15/20 13:42:10)



Acoustic Velocity 985.697 ft/s Joints counted 25  
 Joints Per Second 15.5473 jts/sec Joints to liquid level 32.3694  
 Depth to liquid level 1026.11 ft Filter Width 13.1745 17.1745  
 Automatic Collar Count Yes Time to 1st Collar 0.256 1.864

October 27, 2020

Loveness Mpanje  
F. G. Holl Company L.L.C.  
9431 E CENTRAL STE 100  
WICHITA, KS 67206-2563

Re: Temporary Abandonment  
API 15-047-20749-00-00  
MAYHEW C 1-33  
SW/4 Sec.33-25S-16W  
Edwards County, Kansas

Dear Loveness Mpanje:

"Your temporary abandonment (TA) application for the well listed above has been approved. In accordance with K.A.R. 82-3-111 the TA status of this well will expire 10/27/2021.

- \* If you return this well to service or plug it, please notify the District Office.
- \* If you sell this well you are required to file a Transfer of Operator form, T-1.
- \* If the well will remain temporarily abandoned, you must submit a new TA application, CP-111, before 10/27/2021.

You may contact me at the number above if you have questions.

Very truly yours,

Michael Maier"