

KANSAS CORPORATION COMMISSION
OIL & GAS CONSERVATION DIVISION

TEMPORARY ABANDONMENT WELL APPLICATION

OPERATOR: License# _____
 Name: _____
 Address 1: _____
 Address 2: _____
 City: _____ State: _____ Zip: _____ + _____
 Contact Person: _____
 Phone: (_____) _____
 Contact Person Email: _____
 Field Contact Person: _____
 Field Contact Person Phone: (_____) _____

API No. 15- _____
 Spot Description: _____
 _____ - _____ - _____ - _____ Sec. _____ Twp. _____ S. R. _____ E W
 _____ feet from N / S Line of Section
 _____ feet from E / W Line of Section
 GPS Location: Lat: _____, Long: _____
(e.g. xx.xxxxx) (e.g. -xxx.xxxxx)
 Datum: NAD27 NAD83 WGS84
 County: _____ Elevation: _____ GL KB
 Lease Name: _____ Well #: _____
 Well Type: (check one) Oil Gas OG WSW Other: _____
 SWD Permit #: _____ ENHR Permit #: _____
 Gas Storage Permit #: _____
 Spud Date: _____ Date Shut-In: _____

	Conductor	Surface	Production	Intermediate	Liner	Tubing
Size						
Setting Depth						
Amount of Cement						
Top of Cement						
Bottom of Cement						

Casing Fluid Level from Surface: _____ How Determined? _____ Date: _____
 Casing Squeeze(s): _____ to _____ w / _____ sacks of cement, _____ to _____ w / _____ sacks of cement. Date: _____
(top) (bottom) (top) (bottom)
 Do you have a valid Oil & Gas Lease? Yes No
 Depth and Type: Junk in Hole at _____ Tools in Hole at _____ Casing Leaks: Yes No Depth of casing leak(s): _____
(depth) (depth)
 Type Completion: ALT. I ALT. II Depth of: DV Tool: _____ w / _____ sacks of cement Port Collar: _____ w / _____ sack of cement
(depth) (depth)
 Packer Type: _____ Size: _____ Inch Set at: _____ Feet
 Total Depth: _____ Plug Back Depth: _____ Plug Back Method: _____

Geological Data:

Formation Name	Formation Top	Formation Base	Completion Information
1. _____	At: _____ to _____ Feet	Perforation Interval _____ to _____ Feet or Open Hole Interval _____ to _____ Feet	
2. _____	At: _____ to _____ Feet	Perforation Interval _____ to _____ Feet or Open Hole Interval _____ to _____ Feet	

UNDER PENALTY OF PERJURY I HEREBY ATTEST THAT THE INFORMATION CONTAINED HEREIN IS TRUE AND CORRECT TO THE BEST OF MY KNOWLEDGE

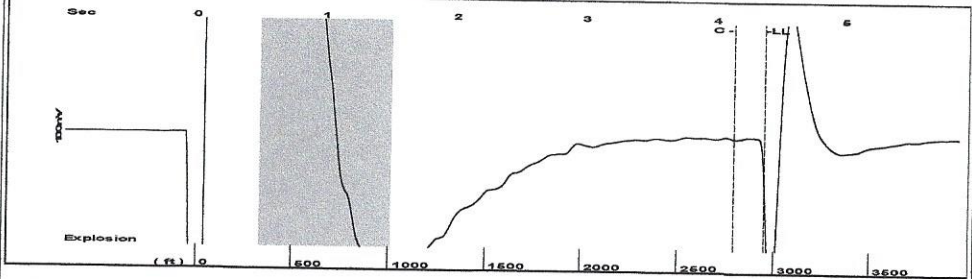
Submitted Electronically

Do NOT Write in This Space - KCC USE ONLY	Date Tested: _____	Results: _____	Date Plugged: _____	Date Repaired: _____	Date Put Back in Service: _____
	Review Completed by: _____ Comments: _____				
TA Approved: <input type="checkbox"/> Yes <input type="checkbox"/> Denied Date: _____					

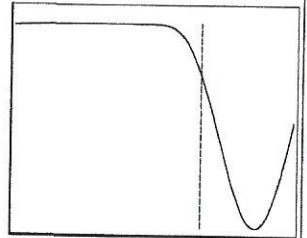
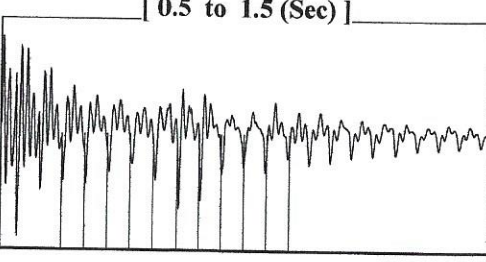
Mail to the Appropriate KCC Conservation Office:

	KCC District Office #1 - 210 E. Frontview, Suite A, Dodge City, KS 67801	Phone 620.682.7933
	KCC District Office #2 - 3450 N. Rock Road, Building 600, Suite 601, Wichita, KS 67226	Phone 316.337.7400
	KCC District Office #3 - 137 E. 21st St., Chanute, KS 66720	Phone 620.902.6450
	KCC District Office #4 - 2301 E. 13th Street, Hays, KS 67601-2651	Phone 785.261.6250

Group: Belpre Well: Massey 2-2 (acquired on: 10/15/20 11:01:40)

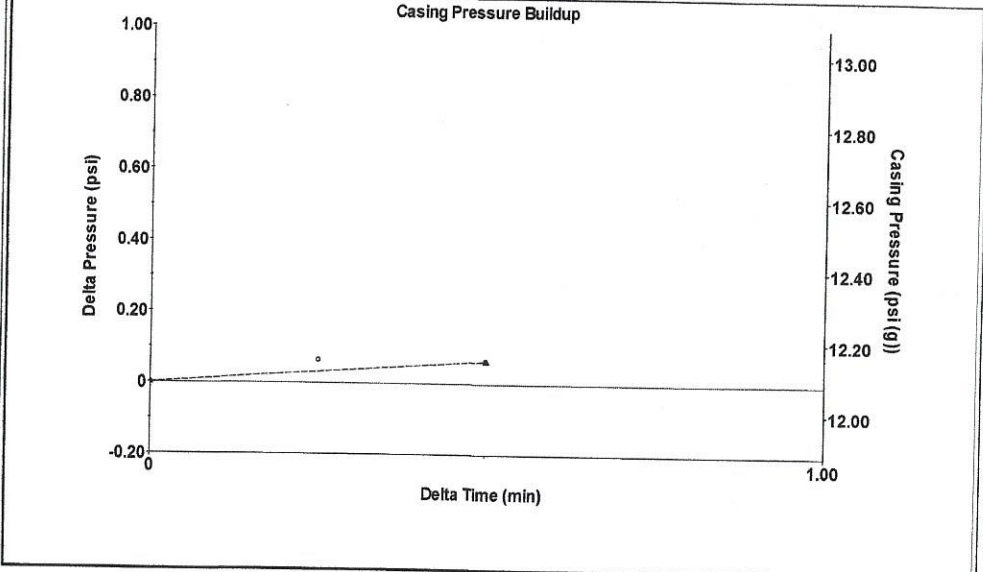


Filter Type High Pass Automatic Collar Count Yes Time 4.37 sec
 Manual Acoustic Veloc. 1295.3 ft/s Manual JTS/sec 21.3675 Joints 97.2619 Jts
 Depth 2948.01 ft



Analysis Method: Automatic

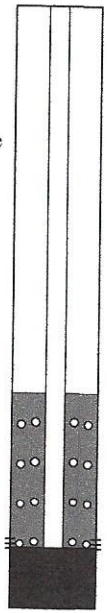
Group: Belpre Well: Massey 2-2 (acquired on: 10/15/20 11:01:40)



Change in Pressure 0.06 psi PT13440
 Change in Time 0.50 min Range 0 - ? psi

Group: Belpre Well: Massey 2-2 (acquired on: 10/15/20 11:01:40)

Production	Potential	Casing Pressure
Current	- * - BBL/D	12.1 psi (g)
Oil - * -	- * - BBL/D	Casing Pressure Buildup
Water - * -	- * - Mscf/D	0.1 psi
Gas - * -		0.50 min
IPR Method	Vogel	Gas/Liquid Interface Pressure
PBHP/SBHP	- * -	13.9 psi (g)
Production Efficiency	0.0	
Oil 40 deg.API		Liquid Level Depth
Water 1.05 Sp.Gr.H2O		2948.01 ft
Gas 0.65 Sp.Gr.AIR		Pump Intake Depth
		4335.00 ft
Acoustic Velocity	1349.2 ft/s	Formation Depth
		4299.00 ft



Producing

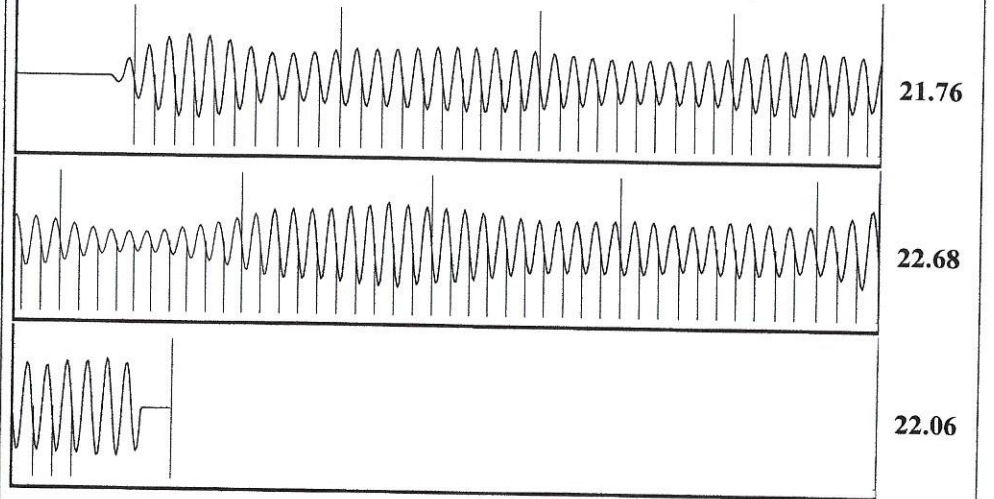
Annular Gas Flow	2 Mscf/D
% Liquid	85 %
Pump Intake	411.0 psi (g)
Producing BHP	399.2 psi (g)
Static BHP	- * - psi (g)

Formation Submergence

Total Gaseous Liquid Column HT (TVD)	1387 ft
Equivalent Gas Free Liquid HT (TVD)	1185 ft

Acoustic Test

Group: Belpre Well: Massey 2-2 (acquired on: 10/15/20 11:01:40)



Acoustic Velocity	1349.2 ft/s	Joints counted	86
Joints Per Second	22.2567 jts/sec	Joints to liquid level	97.2619
Depth to liquid level	2948.01 ft	Filter Width	19.3675 23.3675
Automatic Collar Count	Yes	Time to 1st Collar	0.272 4.136

October 27, 2020

Loveness Mpanje
F. G. Holl Company L.L.C.
9431 E CENTRAL STE 100
WICHITA, KS 67206-2563

Re: Temporary Abandonment
API 15-047-21199-00-00
MASSEY 2
SW/4 Sec.02-24S-17W
Edwards County, Kansas

Dear Loveness Mpanje:

"Your temporary abandonment (TA) application for the well listed above has been approved. In accordance with K.A.R. 82-3-111 the TA status of this well will expire 10/27/2021.

- * If you return this well to service or plug it, please notify the District Office.
- * If you sell this well you are required to file a Transfer of Operator form, T-1.
- * If the well will remain temporarily abandoned, you must submit a new TA application, CP-111, before 10/27/2021.

You may contact me at the number above if you have questions.

Very truly yours,

Michael Maier"