

KANSAS CORPORATION COMMISSION
OIL & GAS CONSERVATION DIVISION

TEMPORARY ABANDONMENT WELL APPLICATION

OPERATOR: License#
Name:
Address 1:
Address 2:
City: State: Zip:
Contact Person:
Phone:
Contact Person Email:
Field Contact Person:
Field Contact Person Phone:

API No. 15-
Spot Description:
Sec. Twp. S. R.
GPS Location: Lat: Long:
Datum: NAD27 NAD83 WGS84
County: Elevation:
Lease Name: Well #:
Well Type: Oil Gas OG WSW Other:
SWD Permit #: ENHR Permit #:
Gas Storage Permit #:
Spud Date: Date Shut-In:

Table with 7 columns: Conductor, Surface, Production, Intermediate, Liner, Tubing. Rows include Size, Setting Depth, Amount of Cement, Top of Cement, Bottom of Cement.

Casing Fluid Level from Surface: How Determined? Date:
Casing Squeeze(s): to w / sacks of cement, to w / sacks of cement. Date:
Do you have a valid Oil & Gas Lease? Yes No
Depth and Type: Junk in Hole at Tools in Hole at Casing Leaks: Yes No Depth of casing leak(s):
Type Completion: ALT. I ALT. II Depth of: DV Tool: w / sacks of cement Port Collar: w / sack of cement
Packer Type: Size: Inch Set at: Feet
Total Depth: Plug Back Depth: Plug Back Method:

Geological Data:

Table with 4 columns: Formation Name, Formation Top, Formation Base, Completion Information. Rows 1 and 2.

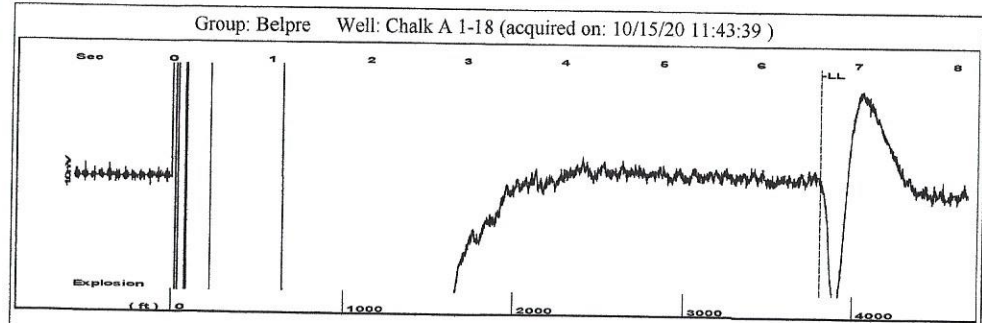
UNDER PENALTY OF PERJURY I HEREBY ATTEST THAT THE INFORMATION CONTAINED HEREIN IS TRUE AND CORRECT TO THE BEST OF MY KNOWLEDGE

Submitted Electronically

Do NOT Write in This Space - KCC USE ONLY
Date Tested: Results: Date Plugged: Date Repaired: Date Put Back in Service:
Review Completed by: Comments:
TA Approved: Yes Denied Date:

Mail to the Appropriate KCC Conservation Office:

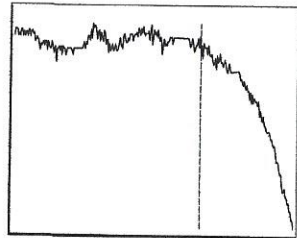
Table with 3 columns: District Office, Address, Phone. Rows for District Office #1, #2, #3, #4.



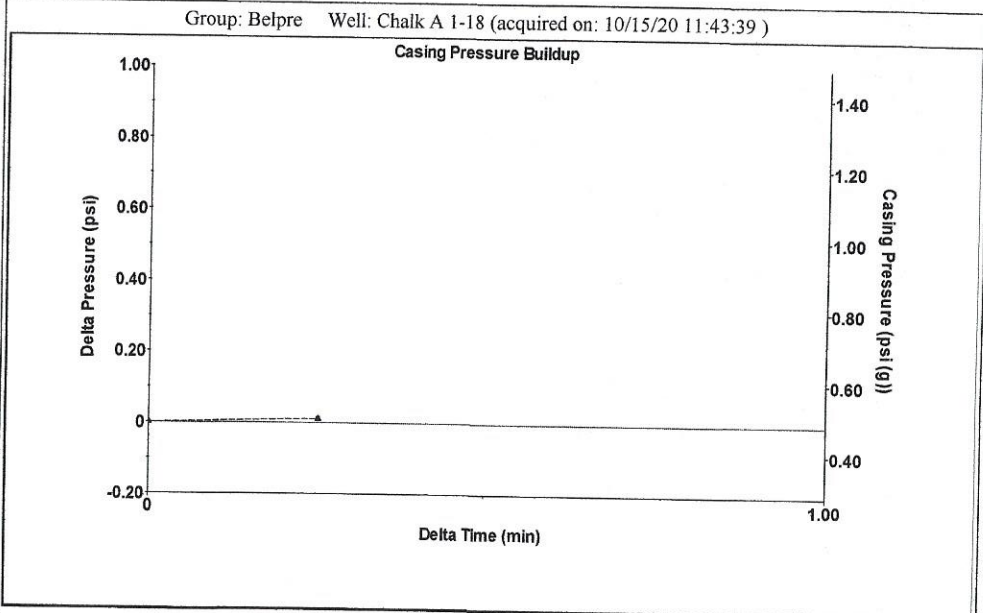
Time 6.614 sec  
 Joints 121.387 Jts  
 Depth 3803.05 ft

Liquid level calculated with user supplied Acoustic Velocity

Acoustic Velocity 1150 ft/s



**Analysis Method: Acoustic Velocity**



Change in Pressure 0.01 psi PT13440  
 Change in Time 0.25 min Range 0 - ? psi

Group: Belpre Well: Chalk A 1-18 (acquired on: 10/15/20 11:43:39)

|                                      |              |                               |               |                  |
|--------------------------------------|--------------|-------------------------------|---------------|------------------|
| Production                           | Potential    | Casing Pressure               |               | Producing        |
| Current                              | - * - BBL/D  | 0.5 psi (g)                   |               | Annular Gas Flow |
| Oil - * -                            | - * - BBL/D  | Casing Pressure Buildup       |               | 1 Mscf/D         |
| Water - * -                          | - * - Mscf/D | 0.0 psi                       |               | % Liquid         |
| Gas - * -                            |              | 0.25 min                      |               | 94 %             |
| IPR Method                           | Vogel        | Gas/Liquid Interface Pressure |               |                  |
| PBHP/SBHP                            | - * -        | 2.2 psi (g)                   |               |                  |
| Production Efficiency                | 0.0          | Liquid Level Depth            |               |                  |
| Oil 40 deg.API                       |              | 3803.05 ft                    |               |                  |
| Water 1.05 Sp.Gr.H2O                 |              | Pump Intake Depth             |               |                  |
| Gas 0.85 Sp.Gr.AIR                   |              | 4320.00 ft                    |               |                  |
| Acoustic Velocity                    | 1150 ft/s    | Formation Depth               |               |                  |
|                                      |              | 4304.00 ft                    |               |                  |
| Formation Submergence                |              |                               | Pump Intake   |                  |
| Total Gaseous Liquid Column HT (TVD) | 517 ft       |                               | 167.2 psi (g) |                  |
| Equivalent Gas Free Liquid HT (TVD)  | 485 ft       |                               | Producing BHP |                  |
| Acoustic Test                        |              |                               | 161.8 psi (g) |                  |
|                                      |              |                               | Static BHP    |                  |
|                                      |              |                               | - * - psi (g) |                  |

Group: Belpre Well: Chalk A 1-18 (acquired on: 10/15/20 11:43:39)

**Entered Acoustic Velocity for Liquid Level depth determination**

October 27, 2020

Loveness Mpanje  
F. G. Holl Company L.L.C.  
9431 E CENTRAL STE 100  
WICHITA, KS 67206-2563

Re: Temporary Abandonment  
API 15-047-21139-00-00  
CHALK A 1-18  
SW/4 Sec.18-24S-17W  
Edwards County, Kansas

Dear Loveness Mpanje:

"Your temporary abandonment (TA) application for the well listed above has been approved. In accordance with K.A.R. 82-3-111 the TA status of this well will expire 10/27/2021.

- \* If you return this well to service or plug it, please notify the District Office.
- \* If you sell this well you are required to file a Transfer of Operator form, T-1.
- \* If the well will remain temporarily abandoned, you must submit a new TA application, CP-111, before 10/27/2021.

You may contact me at the number above if you have questions.

Very truly yours,

Michael Maier"