

KANSAS CORPORATION COMMISSION
OIL & GAS CONSERVATION DIVISION

TEMPORARY ABANDONMENT WELL APPLICATION

OPERATOR: License#
Name:
Address 1:
Address 2:
City: State: Zip:
Contact Person:
Phone:
Contact Person Email:
Field Contact Person:
Field Contact Person Phone:

API No. 15-
Spot Description:
Sec. Twp. S. R.
GPS Location: Lat: Long:
Datum: NAD27 NAD83 WGS84
County: Elevation:
Lease Name: Well #:
Well Type: Oil Gas OG WSW Other:
SWD Permit #: ENHR Permit #:
Gas Storage Permit #:
Spud Date: Date Shut-In:

Table with 7 columns: Conductor, Surface, Production, Intermediate, Liner, Tubing. Rows include Size, Setting Depth, Amount of Cement, Top of Cement, Bottom of Cement.

Casing Fluid Level from Surface: How Determined? Date:
Casing Squeeze(s): to w / sacks of cement, to w / sacks of cement. Date:
Do you have a valid Oil & Gas Lease? Yes No
Depth and Type: Junk in Hole at Tools in Hole at Casing Leaks: Yes No Depth of casing leak(s):
Type Completion: ALT. I ALT. II Depth of: DV Tool: w / sacks of cement Port Collar: w / sack of cement
Packer Type: Size: Inch Set at: Feet
Total Depth: Plug Back Depth: Plug Back Method:

Geological Data:

Table with 4 columns: Formation Name, Formation Top, Formation Base, Completion Information. Rows 1 and 2.

UNDER PENALTY OF PERJURY I HEREBY ATTEST THAT THE INFORMATION CONTAINED HEREIN IS TRUE AND CORRECT TO THE BEST OF MY KNOWLEDGE

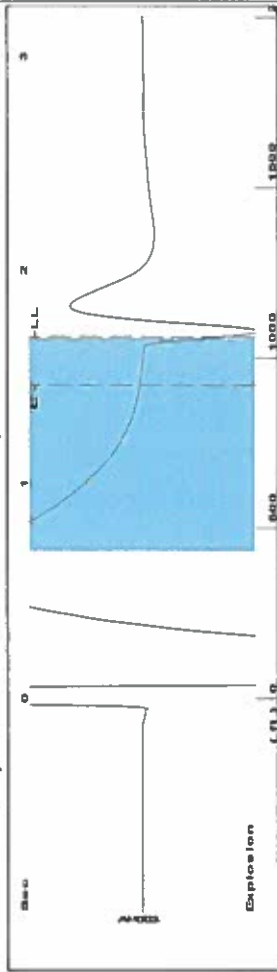
Submitted Electronically

Do NOT Write in This Space - KCC USE ONLY
Date Tested: Results: Date Plugged: Date Repaired: Date Put Back in Service:
Review Completed by: Comments:
TA Approved: Yes Denied Date:

Mail to the Appropriate KCC Conservation Office:

Table with 2 columns: Office Address, Phone. Rows for District Office #1, #2, #3, #4.

Group: SUBLETTE Well: Williams I-3 (acquired on: 10/25/20 08:42:19)



Filter Type High Pass Automatic Collar Count Yes Time 1.691 sec
 Manual Acoustic Velo 1248.51 ft/s Manual JTS/sec 19.8807 Jts
 Depth 1061.95 ft

| 0.7 to 1.7 (Sec) |



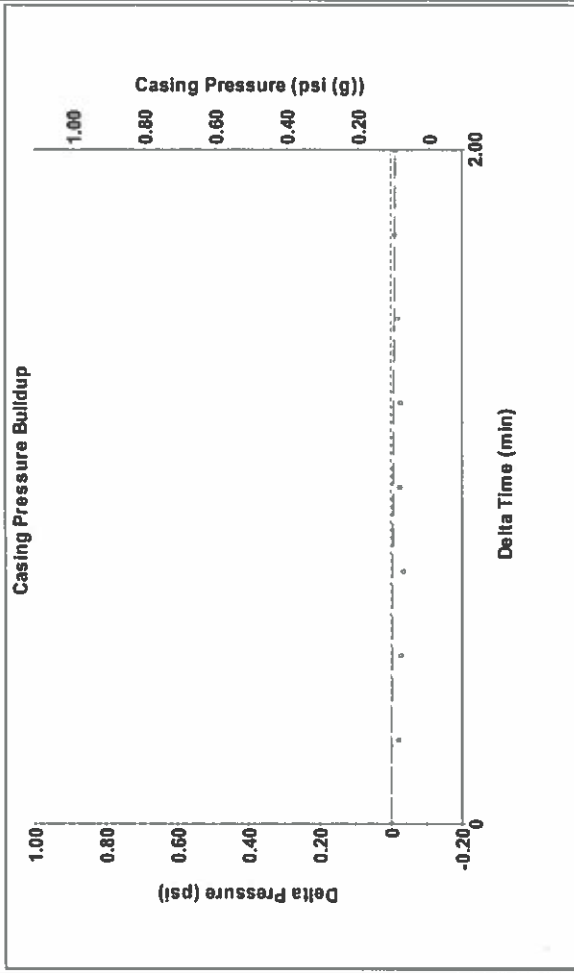
Analysis Method: Automatic

Group: SUBLETTE Well: Williams I-3 (acquired on: 10/25/20 08:42:19)

Production	Potential	Casing Pressure	0.1 psi (g)
Oil -*-	BBL/D	Casing Pressure Buildup	-0.0 psi
Water -*-	BBL/D		2.00 min
Gas -*-	Mscf/D	Gas/Liquid Interface Pressure	0.5 psi (g)
IPR Method	Vogel	Liquid Level Depth	1061.95 ft
PBHP/SBHP	-*-	Pump Intake Depth	4845.00 ft
Production Efficiency	0.0	Formation Depth	4800.00 ft
Oil 40 deg-API		Acoustic Velocity	1256 ft/s
Water 1.05 Sp.Gr.H2O		Formation Submergence	3783 ft
Gas 0.72 Sp.Gr.AIR		Total Gaseous Liquid Column HIT (TVD)	3783 ft
		Equivalent Gas Free Liquid HIT (TVD)	3783 ft
		10/25/2020	

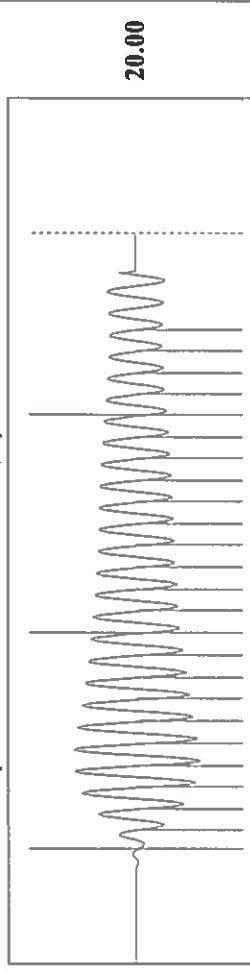
Producing	Annular	Gas Flow	0 Mscf/D
	% Liquid		100 %
Pump Intake	1234.5	psi (g)	
Producing BHHP	1220.8	psi (g)	
Static BHHP	-*-	psi (g)	

Group: SUBLETTE Well: Williams I-3 (acquired on: 10/25/20 08:42:19)



Change in Pressure -0.01 psi PT16716
 Range
 Change in Time 2.00 min

Group: SUBLETTE Well: Williams I-3 (acquired on: 10/25/20 08:42:19)



Acoustic Velocity 1256 ft/s Joints counted 24
 Joints Per Second 20 Jts/sec Joints to liquid level 33.82
 Depth to liquid level 1061.95 ft Filter Width 17.8807
 Automatic Collar Count Yes Time to 1st Collar 0.264 1.464

October 27, 2020

Katherine McClurkan
Merit Energy Company, LLC
13727 Noel Road, Suite 1200
Dallas, TX 75240

Re: Temporary Abandonment
API 15-081-21951-00-00
Williams I 3
SE/4 Sec.07-30S-33W
Haskell County, Kansas

Dear Katherine McClurkan:

"Your temporary abandonment (TA) application for the well listed above has been approved. In accordance with K.A.R. 82-3-111 the TA status of this well will expire 10/27/2021.

- * If you return this well to service or plug it, please notify the District Office.
- * If you sell this well you are required to file a Transfer of Operator form, T-1.
- * If the well will remain temporarily abandoned, you must submit a new TA application, CP-111, before 10/27/2021.

You may contact me at the number above if you have questions.

Very truly yours,

Michael Maier"